



BRYN MAWR BUGGLE

Published by the Bryn Mawr Neighborhood Association

July 2011



June 11, 2011

Photos by Jay Peterson

On June 11th, a rare beautiful Saturday greeted neighbors assembled at the Upton Gardens to hear Cathy Skalicky discuss the history and design of that green



Brushing up on bedge history

sanctuary. These cyclists and walkers, participants in the first-ever, Pedal to the Petals tour of Bryn Mawr community gardens, then laced or saddled up for a five-mile journey that took in fifteen neighborhood public gardens. Volunteer gardeners were on hand to share stories and receive appreciation from passersby. Highlights included: inspecting eighteen trees planted in May in Area 1's Triangle Park thanks to \$3,000 raised

from neighbors by Peg Meier; an overview of the Cedar Lake Park Association's prairie restoration project from Neil Trembley; Kathy Ripke and Steve Jensen's drawings, photos and models depicting origins of the Bryn Mawr hedge; and Metro Blooms' unveiling of its exciting design for the Church's large, new raingarden. Thirsty tourists then retired to Cuppa Java for several happy hours.

The P2P map is posted on the BMNA website for neighbors interested in taking the tour on their own schedule. Pedal to the Petals is the first of three BMNA-sponsored neighborhood garden events that will culminate, in July of 2012, with the resumption of the official Bryn Mawr Blooming Gardens tour.

- Ted Kiesselbach, Area 6



To create you must first destroy

A Dream Realized: Completing the Cedar Lake Regional Trail to the Mississippi River

Glowing clouds threatened to wash out the ribbon-cutting ceremony marking the official opening of the Cedar Lake Regional Trail to the Mississippi River on Tuesday, June 14. The rain held off long enough for a brief round of speeches by city and county officials gathered across from the new terminus of the trail at West River Parkway in downtown Minneapolis in the shadow of the Federal Reserve Bank. During the ceremony, several speakers singled out the Cedar Lake Park Association (CLPA) for their vision and perseverance in sustaining a twenty-two year effort to create the first free-flowing, federally funded bicycle commuter trail in the nation. (CLPA began back in

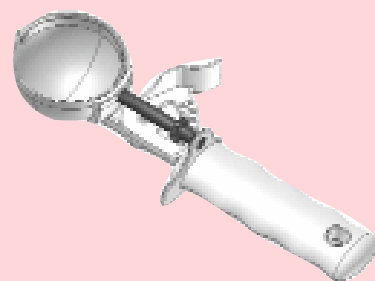
1989 with the help of the Bryn Mawr Neighborhood Association, and many at the ceremony were long-time Bryn Mawr residents.) Mayor R.T. Rybak acknowledged during his remarks, "Citizen's groups like the Cedar Lake Park Association hold [public official's] feet to the fire, to make sure projects like this get done." Fittingly, a CLPA member gave the keystone speech. He noted that for many, the day culminated a long and arduous effort entailing the efforts of a number of public and private forces. None of it, however, would have happened without the vision and leadership of Cedar Lake Park citizens' group: ordinary people doing the extraordinary.



Immediately after the quick and joyful cutting of the ribbon, the rain came and the crowd scattered. Many used the trail to bicycle home to Bryn Mawr. For them, it wasn't just the sky crying. Many shed tears of joy for a dream realized.

- Neil Trembley, Area 3

2011 BMNA Ice Cream Scoop-Off



Tuesday, July 19, 6:00-8:00 p.m.

The Bryn Mawr Neighborhood Association invites you to join them on Cedar Lake Road in front of Bryn Mawr Presbyterian Church, Tuesday, July 19, for the 5th Annual Ice Cream Scoop-Off.

This re-make of the traditional Ice Cream Social, involves sampling ice creams donated by several local ice creameries. Once again, Adele's, Ben & Jerry's, Eddy's, Kemps, and Sebastian Joe's are sending their best confections.

Everyone will have a chance to try as many flavors as they like and then vote for their favorite.

But this event is more than just frozen treats. We will have the street blocked off so you and the kids can socialize with neighbors. You can also enjoy the music of Scotty and the Country Killers.

So, dust off your dancing shoes, prepare to have your taste buds delighted and come out and enjoy some summer fun! Bring a little donation for the BMNA to help defray the cost of the event or become a 2011 BMNA Member.

- JoEllyn Jolstad

Ours sponsors:





BMNA Reporter

BRYN MAWR NEIGHBORHOOD ASSOCIATION - Board Meeting Minutes
Wednesday, June 8, 2011, 7:00– 8:45 PM
Bryn Mawr Presbyterian Church

Call to Order and Introductions

- **Welcome new members.**
- **In attendance:**
Guests-Lisa Goodman, City of Mpls. Councilmember; Nnamdi Okoronkwo, Assistant City Attorney and Dylan Thomas, Southwest Journal. Board Members-Marlin Possehl, President; Ted Kiesselbach, Co Vice President; Sandra Gay, Secretary; Dave Holets and Liz Pederson, Co-Treasurers; Patty Wycoff, Coordinator; Scott McLaughlin, NRP Chair; JoEllyn Jolstad, Bugle ; Susan Verrett and George Seebach, Area 2; Jeanne Carter and Jessica Wiley, Area 3; Dave Logsdon, Area 5; Barry Schade and Jay Peterson, Area 6; Andrew Kraling, Area 7.

Approval of Consent Agenda

Minutes of last month’s meeting
Today’s Agenda
Acceptance of this month’s Financial Report (available online)

City update: Councilmember Lisa Goodman

Long-time aide, Doug Kress will be leaving to pursue a Bush Fellowship. His replacement will attend the July meeting.

Treasurer’s Report

Approve corporate resolution changing signatories on checking account- Approved and signed by appropriate Board Members for the two new co-treasurers. They are Dave Holets and Liz Pederson.

Crime Prevention Report

Presentation to group by Nnamdi Okoronkwo, Assistant City Attorney, on Courtwatch, a collaborative effort

between citizens, business owners, the Mpls Police Department, Henn county and City Attorney’s Offices, Henn Co. Probation and a variety of other public and private agencies to address the ongoing issue of chronic and repeat offenders in our community.

Patty Wycoff, NC Activity Report

Garage Sale
24 families donated to BMNA sale. \$1,100 raised for BMNA at the sale and an additional \$900 was raised through registrations.
Annual Meeting comments & review
Membership: 341 turned in money for a total of \$15,090. Need list of non renewals per area so reps can contact. Nice presentation of Capstone Project.
Ice Cream Social
Band has been reserved and planning in place.
Water for Community Gardens
Four Hydrants all hooked up with combination locks for watering community gardens. BMNA will be charged \$100 for each hydrant plus cost of water if it exceeds \$100.

JoEllyn Jolstad, Bugle Report

Volunteer board members to write articles for Bugle. List went around and there were volunteers for all months. The contributions are due on the 20th of each month. If anyone knows of a family with a graduate, please recommend that they send an notice for the Bugle.

NRP Report – Scott McLaughlin

Energy Audits
Approved more and more are available. There were a high percentage of participants.
Rain Gardens
Sold all 30 rain garden coupons. Two phases. 50% reimbursement up to \$500. Metro Blooms oversees landscaping construction for \$100 with youth workers.
Downtown Lighting
Graphics options for banners were presented. Suggestions were made. A committee was formed of Susan

Verrett, Jeanne Carter and Sandie Gay. Sandie will contact Larry Skov to discuss development of additional options. The committee will meet and determine a recommendation for the July Board Meeting.

LRT Project Updates

Capstone (Humphrey Inst) Project
Members were impressed with the presentation at the annual meeting.
Corridor Coalition for St. Louis Park
Presented on same evening as BMNA Board Meeting. Board felt there should be a response to St. Louis Park proposal for freight and light rail to share the Kenilworth Corridor and remove the Cedar Lake walk/bike trail. Presentation tonight. BMNA resolution to respond was made by Barry Shade, was seconded. and passed. For full resolution, see Addendum below.

Garden Group – Dave Logsdon

Pedal to Petals
Event on June 11, 4-6 PM.
Anwatin Community Garden
3/4 acre behind school-School wants BMNA to be a community partner. Adding one more hydrant, man power, buy or rent plots, helping kids understand gardening. Federal grant requires community involvement. Insurance will protect members. Motion to participate, seconded and passed to participate in Community garden project with Anwatin as community partner.

Follow-up Report on SW Wirth Citizen’s Advisory Council

Ted Kiesselbach reported on recommendations on concept plan. Opposed to off road cycling. May simplify trails near quaking bog. Conflict between active users and passive users. To date, unresolved because of tornado damage.

Fare for All

Ted Kiesselbach reported on Blue Cross Blue Shield sponsored “Fare for All Express” and passed flyers around. Buy in bulk and get 40%

off fresh, healthy food. The location is YMCA at 1711 West Broadway, Mpls, MN and the hours are Mondays 5pm to 7pm. 2011 Dates are as follows: June 13, July 18, Aug 15, Sept 19, Oct 17, Nov 14, Dec 12.

Committee Reports

Land Use Committee Report—
BMNA Board acknowledges receipt of variance request/review for 2010 Cedar Lake Parkway.

Discussion Items, Updates and Announcements:

Adjoumat 8:45 p.m.
NEXT BOARD MEETING:
Wed, July 13, 7:00 p.m., BM Church
UPCOMING EVENTS:
Pedals to Petals, Sat., June 11
Ice Cream Scoop Off, Tues., July 19
National Night Out, Tues., Aug. 2

Addendum

LRT resolution for BMNA Board
WHEREAS the Bryn Mawr Neighborhood Association (BMNA) has consistently supported the Southwest Transitway and on April 11, 2007, passed a resolution supporting the LRT and Kenilworth Alignment, including a Penn Avenue Station; and

WHEREAS the BMNA again, on July 9, 2008, passed a resolution in support of the LRT project and Kenilworth alignment; and

WHEREAS the Bryn Mawr neighborhood stressed its regular reliance on the trails for biking and walking in its February 25, 2011 comments on the Southwest Transitway Station Area Strategic Planning Document; and

WHEREAS the BMNA has joined with a Corridor Coalition of neighborhood organizations along the proposed Southwest Transitway in order to collectively address Transitway issues affecting quality of neighborhood life; and

WHEREAS it has been proposed that both freight and LRT trains be routed through the Kenilworth Corridor, thus potentially displacing the bike and pedestrian trail; and

WHEREAS the current configuration of the Cedar Lake Regional Trail and the Kenilworth Trail results in over 450, 000 visits a year, which number is projected to increase.

NOW THEREFORE BI IT RESOLVED that the BMNA supports the current configuration of the Kenilworth Trail and joins other members of the Corridor Coalition in strongly opposing any infringement upon or realignment of the Kenilworth Trail in connection with any routing of freight along side SW LRT trains in the Kenilworth Corridor or for any other reason.

BE IT FURTHER RESOLVED that the BMNA is strongly opposed to keeping the freight lines in the Kenilworth Trail Corridor along side the SW LRT.



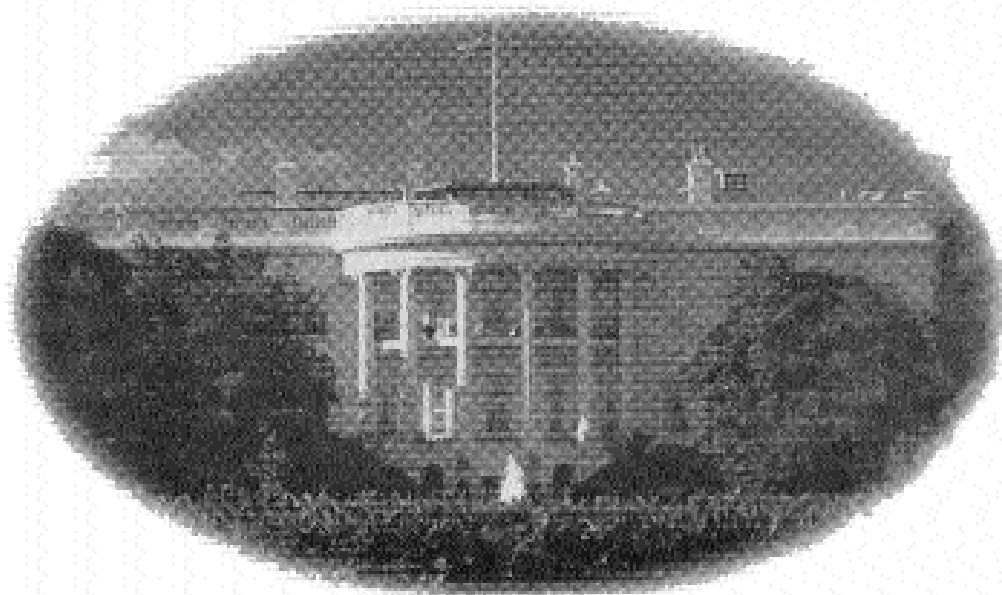
finnStyle
Semi-annual
SALE
UP TO 50% OFF
JULY 1ST - 15TH

finnStyle

160 Glenwood Ave.
Minneapolis, MN 55405
Ph. 612.333.3127

Store Hours
Mon - Sat: 10AM - 5PM
Sunday: Closed

www.FinnStyle.com




This Fourth of July, take a
moment to remember these
great American names:
Washington, Franklin
and Kalitowski.

Jim Kalitowski

R E A L T O R

He's been around your block.

612-867-6703
jimkalitowski@remax.net



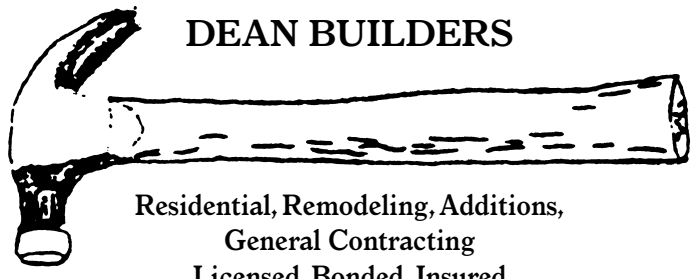
Recycling

www.ci.minneapolis.mn.us
/solid-waste
(612) 673-2917

Bryn Mawr Recycling Schedule

	Monday	Tuesday	Wednesday
Area 1	July 11 July 25		
Areas 4W, 5W, 6, 7	July 18	July 5	
Areas 2, 3, 4E, 5E		July 19	July 6

Use it up, wear it out, make it do, do without. Recycle.



DEAN BUILDERS

Residential, Remodeling, Additions,
General Contracting
Licensed, Bonded, Insured

Jeffrey Dean
(612) 377-6413
Cell (612) 245-7369

602 Thomas Ave. So.
Minneapolis, MN 55405

From Scratch...

CINNAMON and CARAMEL ROLLS



- Since 1965

On the Corner of Glenwood & Logan
Monday - Friday 6:00 AM - 3:00 PM



OHANG MAI THAI

Calhoun Square
3001 Hennepin Ave. S.
Minneapolis, MN 55408

(612) 827-1606
Fax (612) 827-1635



MILL CITY DENTAL

JAY WILLIAMS, D.D.S.

612-377-3740

2218 LAUREL AVENUE • MINNEAPOLIS, MN 55405



From the Editor

Change is all around us. Even though we may get lulled into thinking that the days, and weeks are the same, year after year, there is always something that is new or different. Most of the time change is almost imperceptible but sometimes it is sudden and jarring.

It is at these times that I find myself mourning the loss and feeling sad that I was not more appreciative of the way things once were.

In my work with the BMNA, I often am working on things that people do not want to see anything change. More than nostalgia, they hang on to the past like it is some kind of covenant. I don't begrudge them this clinging to the past. But like our many young people graduating from high school and college, sometimes change can be the start of a new adventure.

This year the changes include the first summer that our now adult daughter did not come home to live with us for the summer. My aging parents are planning to sell the family cabin. The school project I have been working on for the past 2 years is delayed another year and my time at the community schools has also ended.

Now I find myself in waters I have not navigated for many years, the search for a job. But of course, it cannot be just any job. The work I have been doing these past 14 years has been so rewarding. It is emotional to think how rare and special that is and how to fill that part of my life now.

The most recent change in my life was to help a dear friend move out of her home across the street. Watching her sift through her possessions to select what to take with her and what to leave at the curb for ARC has me reflecting on what is essential in my life.

I think what I need now is joy. The trick is how to find it or rather how to recognize it in what I already have. This year my husband and I celebrated our 25th wedding anniversary. Believe me, I know how rare and special that is.

This month, I was going to write about the government shutdown looming at the State Capitol. Will it happen? Who knows. Do I agree with what has been deemed essential? Not really. But who knows, in one hour, when this paper is actually being printed, some major changes will either take place, or not. Life is change and change is constant. I have learned to try and be grateful.

I know that I am very appreciative of the Bugle readers and contributors, so thank you all.

- JoEllyn Jolstad, bugle@bmna.org

NORTH END HARDWARE



Exceptional Service

Have a job? We have a Tool.



Northend Rental Just Rent It!

NORTH END HARDWARE & RENTAL
at PENN and LOWRY
Hours: M-F, 7 a.m.-6:30 p.m.; Sat, 7 a.m.-5 p.m.
Darryl Weivoda, Owner

612-529-9151 • Northendhdwr@aol.com

CounterTalk

by Dave Logsdon



davesmagnets@gmail.com

"I believe that unarmed truth and unconditional love will have the final word in reality."

- Martin Luther King -

Last month I wrote a column that I thought totally pushed the boundaries and was Pulitzer Prize worthy. It was colossally original, cutting edge writing that was visionary in its perception! Most of the people I talked to said it was kind of weird and kind of sucked. I've substituted "controversial" for "wacky fun" this month as we sail along into summer.

Gated Community??

Last month we had a wildly successful Pedals to Petals bike tour of our community gardens. When people visit Bryn Mawr, they are often impressed by how beautiful it is. A lot of meetings and hard work goes into this equation. As the "spiritual head" of the Bryn Mawr Garden Group it may be odd for me to suggest that this beautification thing could go too far. Recently, a customer at the Bryn Mawr Market when I asked what she thought of the Market's upwardly trendy direction, she stated that she hoped it didn't lose its funky soul in the transition. While I don't see Steve or Larry in clean pressed uniforms with nametags greeting customers with a perky, "Welcome to the Bryn Mawr Market, how may I serve you" any time soon, but I do get the point. We don't want to become a gated community sans gates.

On the other hand an issue was brought up at a recent Bryn Mawr Neighborhood Association meeting concerning the homeless guys that panhandle by the Freeway exit ramps. While these fellows are not exactly Chamber of Commerce endorsed ambassadors to the neighborhood, they are not violating any laws unless they walk toward the cars to solicit any more than they would be sitting on the sidewalk waiting for a bus. One of the regulars is a veteran, who served his country and is just trying to make twenty bucks for a place to sleep. Many of these of these homeless are veterans who cannot hold a job because of PTSD or drug addiction and slip through the cracks of our

increasingly porous social working system. They get hassled enough by thugs and rednecks, we should at least leave them alone.

There's a Party Going on Right Here!

Don't miss the Annual Ice Cream Scoop Off that is a calorie filled fun event where diets go to die. There's lots of ice cream, music, and lots of family fun. You never know who might show up! Watching me dance is always at the top of everybody's list! I promise not to scare the children this year.

In August, National Night Out is usually a good time to mingle with your neighbors except for the ones who have a restraining order out on you. The deadline to get your block permit to barricade the streets is coming up so get that going pretty soon now. It's always fun to watch your neighbor have one too many and act the fool, but enough about me.

Dinosaurs and Other Stuff.....

The worst kept secret in Bryn Mawr is the dinosaur sighting in Brownie Lake. Anyone entertaining out of town guests has made it a guaranteed destination. It's best to go on a

foggy morning and watch the double takes. The grandkids really dig it!

Eric Sherarts is a quasi-celebrity in our community. He's been a star Special Olympian, acted in plays, had his photo on the wall at the Minneapolis Institute of Arts "Foot in the Door" art exhibit, and now he has mug plastered all over a billboard! There is a campaign being launched to get people to stop using the "R" word as part of our colloquial vernacular. Eric, with his high profile persona was the obvious choice. The billboard is located between 8th & 9th on Park Avenue. Eric has always been a regular at the Market where he loves to corner me, break a couple of ribs with a bear hug, and to call me a candy a**!

How are we going to keep Dennis Spears down in Bryn Mawr after he has seen D.C.? Dennis' portrayal of Nat King Cole is wowing them at the Kennedy Center for the Arts. He's rubbing elbows with a lot of big time celebs and high powered politicians, but he will be coming back to the Twin Cities with the play for Christmas which promises to be a hot ticket.

Deacon Warner's documentary about the Twin Cities chapter of Veterans for Peace's long participation in School of the Americas' Watch annual protest outside the gates of Fort Benning in Columbus, Georgia is near completion. It will get a showing at the Veterans for Peace National Convention in August. The convention takes place in Portland, Oregon on the campus

of Portland State University. Having a small role in making this film (as Producer), I will answer question about the film after the film is shown. We will have a Twin City premiere in either July or August!

Remember folks, as I wrap up another exciting episode of CounterTalk, to shake it, don't fake it, and don't forget to boogie!

CLEAR (Body & Home)

HOLISTIC THERAPIES
FOR BODY & HOME



SHIATSU
MASSAGE

ACUPUNCTURE

ACUPUNCTURE FOR PAIN MANAGEMENT

CRANIAL SACRAL THERAPY

HERBAL & FLOWER ESSENCE THERAPY

HERBAL ESSENCE THERAPY

FACIAL REJUVENATION ACUPUNCTURE

THAI YOGA BODYWORK

TC - Traditional Chinese Medicine & NLP

DIETITIAN & NUTRITION

REIKI & QIGONG ENERGY HEALING

EAR CANDLING

CHIROPY

TRUST THERAPY

CHIROPY

KUNDALINI YOGA

COMMUNITY ACUPUNCTURE

CHIROPY

CLUTTER CLEANING

CHIROPY

EFFICIENCY & ORGANIZATION

REDESIGN

DIETITIAN & NUTRITION

Relax • Rejuvenate • Nurture
Simplify • Organize • Balance

612-377-7677

www.clearbodyandhome.com

405 Cedar Lake Road S.
BRYN MAWR

MMM, YUMMY!

They tell us that ours are the BEST!

BISCUITS & GRAVY~~~

*Milda's
Cafe*

- Since 1965

On the Corner of Glenwood & Logan
Monday - Friday 6:00 AM - 3:00 PM

OVER 125 LANDSCAPE
PROJECTS COMPLETED
IN SOUTH MINNEAPOLIS

urban landscape design,
installation and maintenance

field
outdoor spaces inc.

call for a free consultation

612.789.9381

fieldoutdoorspaces.com

COORDINATOR CORNER

My name is Patty Wycoff and I am the Bryn Mawr Neighborhood Association Coordinator. Feel free to contact me at organizer@bmna.org or 612-377-4565.

Please add your e-mail to the BMNA e-mail list. Go to bmna.org and click on "add to e-mail." You will receive information about upcoming events, snow emergencies, crime reports, etc.

LANDSCAPE GARDEN
DESIGN & CONSULTING

TEMENOS
Garden Services

612.377.4491
www.temenosgardens.com

Edible Gardens • Bird/Butterfly Gardens • Native Plant Gardens • Rain Gardens
Hillside Gardens • Cottage Gardens • Boulevard/Front Yard Gardens • Woodland Gardens



Bryn Mawr Soap

On sale at Bryn Mawr Market
and Twin Cities area co-ops

www.brynmawrsoap.com 612-374-3613

Bryn Mawr Residents Start an All-natural Soda Company

Two Bryn Mawr residents, Bob Safford, Area 1, and Carleton Johnson, Area 2, have developed an all natural soda with Bryn Mawr residents' help that will start showing up at The Wedge, Whole Foods, Lunds, Byerlys, Kowalski's and other retail locations in July.

Bob never intended to start an all natural soda. It just came to him one night last summer while having dinner with friends at the Bradstreet Crafthouse downtown. Having given up alcohol over 10 years ago, while all of his friends were enjoying interesting cocktails made from different fruits, herbs and spices; Bob was left with some flavored tonic water as a festive drink. And that's when it hit him - why isn't someone making a great soda with the same unique combinations of natural fruits, herbs and spices?

A professional marketer for the past 20 years, Bob contacted Carleton, a fellow marketer, and they met at Cuppa Java to discuss the idea. After spending a few weeks doing research to see if there was anything like this in the marketplace, at another Cuppa Java meeting they decided it was a unique idea and one that consumers might embrace. Dan Oskey, a local mixologist, and Steven Walker, another friend, were brought onto the team and product development started. After tasting and refining around 100 recipes, the team

whittled down the list to 8 different flavors to test with family and friends.

So one night last November, an area 2 "Rooster Party" was held where over 20 Bryn Mawr residents went to Carleton's house for a blind taste testing. Before a night of socializing, everyone sipped different soda flavors and rated them on several dimensions. Those results were combined with a few other family and friend groups and that led to the determination of the final four flavors that are being launched.

All the other components to launching a product were also quickly developed: package graphics were developed by Spunk Design Machine in South Minneapolis; a bottler was found; investors were recruited; and a distributing agreement was made. What has been created is Joia All Natural Soda with 4 varieties: Grapefruit, Chamomile & Cardamom; Lime, Hibiscus & Clove; Blackberry, Pomegranate & Ginger; and Pineapple, Coconut & Nutmeg.

Consumer and retailer response has been great! The flavors have wonderful layers to them and taste very fresh. The packaging looks great and even Mayor Ryback enjoyed at a recent sampling event at French Meadow Café. The Joia team looks forward to sharing Joia with fellow Bryn Mawr residents at local events. Thanks for your help Bryn Mawr! And Drink Distinct with Joia!

Bryn Mawr Neighborhood Association Calendar - July 2011

All meetings are open - everyone is welcome. Neighbors are urged to attend and participate in meetings and activities of special interest to them.
Bryn Mawr Neighborhood Association and its committees meet at Bryn Mawr Elementary School during the school year, (begins August 29, 2011) unless otherwise noted.

Sunday	Monday	Tuesday	Wednesday	Thursday	Friday	Saturday
BMNA meetings moved to Bryn Mawr Presbyterian Church during Minneapolis Public Schools summer break. (June 8-August 26, 2011)					1	2
3	Independence Day Holiday. 4	Land Use Committee5 Meeting, Bryn Mawr Presbyterian Church basement, 7pm	6	7	8	9
10	11	12	BMNA Meeting at Bryn Mawr Presby- terian Church, 7pm 13	14	15	16
17	18	Ice Cream Scoop Off9 6-8 pm on Cedar Lake Road	Bryn Mawr Garden20 Club monthly meet- ing in basement of Cuppa Java, 7pm	21	22	23
24	25	26	27	28	29	30
31						

Chickens in Bryn Mawr

If someone told you they raise chickens, you might picture a pastoral farm in rural Minnesota complete with a red barn and cows. But the fact is, raising chickens in the city is becoming more popular with over 100 chicken households in Minneapolis, including several right here in Bryn Mawr.

John Stillman of area 3 has had 4 chickens for about two and a half years. Growing up in Connecticut, his mom raised chickens on their large suburban lot. John says he raises chickens for the nostalgia and "...the great tasting eggs. They are also healthier for you, and better for the environment. I also think it's good for my kids to understand where food comes from." Chickens also eat lots of bugs that can harm your garden like tomato worms, aphids and grubs. Many people who raise chickens will tell you they have distinct personalities and come to love them as pets.

Keeping chickens requires a commitment, but it doesn't require lots of space. In fact, according to the Minneapolis Department of Animal Care and Control regulations, each chicken requires ten square feet of yard and only two square feet of coop space. The coops vary widely in design but all provide shelter from the rain and cold, protection from predators like coyotes and raccoons, and a nest box where the chickens lay their eggs. Overall, chickens require a lot less care than a dog or even a cat. Feeding once a day and coop cleaning once a week is all it takes to keep them happy.

Minneapolis requires a small animal permit to keep chickens. At least 80% of the property owners within 100 feet of your lot must provide their consent. Those who don't consent might worry about noise and odor, but routine cleaning and a flock with no roosters

will eliminate those problems. John says a city inspector visits occasionally to make sure he is in compliance. A few neighbors I spoke with say living near a chicken coop is not a problem. Jacki from area 3 lives next door to several chickens. "I love 'em," she says. "I grew up in the country and they remind me of home. They are peaceful to watch, and free entertainment for my cat." Jackie's cat has learned that its best to watch from a distance.

The blurred line between farm animal and pet can become an issue when the hens stop laying eggs. While the average hen can live well over ten years, they are most productive between age 1 and 3. As they age, their egg production slows. On the farm, that can mean a move from hen house to dinner table. That doesn't sit well with John's 10 year old son, Jack. He named each of the chickens and worries about their future. Jack is lobbying hard for chicken retirement instead of the roasting pan. For now, the chickens are producing about one egg a day, and have nothing to worry about.

If you buy organic and like the idea of becoming more self sufficient when it comes to food, consider raising a few chickens. And if your neighbor shows up at your door looking for permission to build a chicken coop, sign that form and welcome those hens with open arms. Who knows, you might even get repaid with a couple of fresh eggs every now and then. Nothing is more locally grown than that!

For more information on raising chickens check out www.urbanchickens.org, www.thechickenenthusiasat.com, Google "twin city coop tour," or search the city of Minneapolis website for 'small animal permits'.

- Chris Etz, Area 4

R. Davis
CONSTRUCTION, INC.

"A Signature Product"

**Roofing ♦ Siding ♦ Windows
Gutters ♦ Decks ♦ Painting**

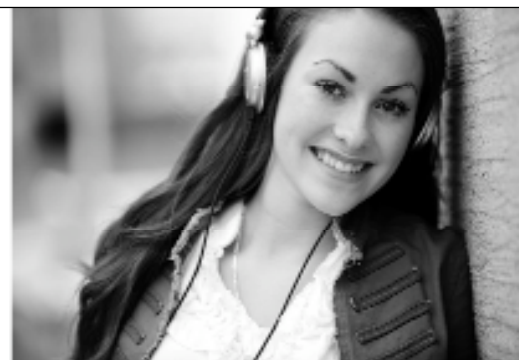
Quality workmanship coupled with excellent customer service is what you can expect from R. Davis. Call or email today to schedule an appointment with one of our qualified professionals. Let us show you how we can optimize your home improvement experience. Ask about our summer specials and storm damage renovation programs.

RDavisConstruction.com
info@rdavisconstruction.com
Phone 612.259.8363
Fax 612.353.5040

Hail Damage Experts
FREE Estimates



Lic.# 20635925



-Orthodontics for All Ages
-Conveniently Located Downtown Mpls
-Invisalign Premier Preferred Provider

-Lingual Incognito Braces
-Light Rail & Skyway Accessible
-Free Initial Consultation

www.Mplsorthodontics.com



Andrew J. Wahl, DDS, PA
Board Certified Orthodontist
150 South Fifth Street, Suite 1475
Minneapolis, MN 55402
612-889-7003



Eloise Butler Wildflower Garden & Bird Sanctuary

Join us for a mid-summer foray into the forests and fields at the Eloise Butler Wildflower Garden and Bird Sanctuary. Stroll under the dense woodland canopy to escape the summer heat or walk through the sunny prairie and enjoy the many blossoms there. Watch birds flit about busy feeding their young. See evidence of pollinators' efforts as flowers turn to fruit; many berries and seeds begin to ripen throughout the Garden in July. Enjoy the longer daylight hours with an evening walk along the trails. It is a beautiful time of year to enjoy what the Garden has to offer.

Program Registration:

Go online to www.minneapolisparks.org to register using ActiveNet, stop in the Martha Crone Visitors Shelter, or call us at 612-370-4903. All programs begin at the Shelter unless otherwise noted.

Garden Information and Inquiries:

To ask Garden related questions or to inquire about plants in bloom and recent bird sightings please stop by the Martha Crone Visitors Shelter or call 370-4903 during Shelter hours.

Garden Hours:

The Garden is open daily from April 1st to October 15th from 7:30am to 1/2 hour before sunset. Martha Crone Visitors Shelter is open Monday to Saturday: 10:00am to 1 hour before sunset and Sunday: Noon to 1 hour before sunset
Directions:
The Eloise Butler Wildflower Garden and Bird Sanctuary is located 1/2 mile north of I-394 on Theodore Wirth Parkway. Metro Transit bus route 9 stops at Glenwood Avenue and Theodore Wirth Parkway, just a two-block walk to the Garden entrance.

Public Programs and Tours - July 2011

Friday, July 1st
8:45-9:45pm New Moon Garden Tour
Saturday, July 2nd
7:30-9:00am Early Birders
11:00am-12:00pm Garden Highlights Nature Hike
3:00-4:30pm Summer Wildflower Tour
Sunday, July 3rd
1:00-2:30pm Native Tree ID Tour
4:00-5:00pm Garden Highlights Nature Hike
Monday, July 4th
11:00am-12:30pm Garden Sensory Tour for Families

4:00-5:00pm Garden Highlights Nature Hike
Tuesday, July 5th
5:30-6:30pm Evening Nature Stroll
Saturday, July 9th
7:30-9:00am Early Birders
11:00am-12:00pm Garden Highlights Nature Hike
3:00-4:30pm Summer Wildflower Tour
Sunday, July 10th
1:00-2:30pm Quaking Bog Tour
4:00-5:00pm Garden Highlights Nature Hike
Tuesday, July 12th
5:30-6:30pm Evening Nature Stroll
Thursday, July 14th
8:45-9:45pm Full Buck Moon Garden Tour
Saturday, July 16th
7:30-9:00am Early Birders
11:00am-12:00pm Garden Highlights Nature Hike
1:00-3:00pm Wonder in the Garden Art Event*
3:00-4:30pm Wildflowers of the Wetland and Prairie Tour
Sunday, July 17th
1:00-2:30pm Summer Wildflower Tour
4:00-5:00pm Garden Highlights Nature Hike
Monday, July 18th
5:30-7:00pm Nature's Healers- Summer Plant Medicines* Special Class \$15.00 per person
Tuesday, July 19th
5:30-6:30pm Evening Nature Stroll
Thursday, July 21st
4:00-7:00pm Sketching Nature (1/4)* Special Class \$89.00 for course
Saturday, July 23rd
7:30-9:00am Early Birders
11:00-12:00pm Garden Highlights Nature Hike
3:00-4:30pm Birding Basics Tour
Sunday, July 24th
1:00-2:30pm Summer Wildflower Tour
4:00-5:00pm Garden Highlights Nature Hike
Tuesday, July 26th
5:30-6:30pm Evening Nature Stroll
Thursday, July 28th
4:00-7:00pm Sketching Nature (2/4)* Special Class \$89.00 for course
Saturday, July 30th
7:30-9:00am Early Birders
11:00am-12:00pm Garden Highlights Nature Hike
3:00-4:30pm Garden Sensory Tour for Families
Sunday, July 31st
1:00-2:30pm Wildflowers of the Wetland and Prairie Tour
4:00-5:00pm Garden Highlights Nature Hike

Program Descriptions

Birding Basics Tour **\$5 per person/\$10 per family**
This program is designed to assist beginning birders develop techniques for rewarding bird watching. We will learn tips to increase ease and usability of binoculars and field guides and will spend time in the field discovering how to successfully identify birds. Bring binoculars and a birding field guide or you can borrow ours.

Early Birders

Free
This program is designed for individuals who have some experience with field guides and binoculars, and wish to practice finding and identifying birds. In addition to bird identification, we will focus on birding by ear, bird behavior, and bird habitats. Bring binoculars and a field guide or borrow ours.

Evening Nature Stroll

Free
Relax and revel in the beauty of this short season as a Garden naturalist leads you on a tour of the wildflowers along the woodland trails.

Full Buck Moon Garden Tour
\$5 per person/\$10 per family. Pre-registration required.

Take a twilight tour of the Garden and discover the magic of being in our Sanctuary long after the sun has set. We will look for bats, listen for owls

and enjoy the spring song of chorus frogs. Meet at the front gate.

Garden Highlights Nature Hike

Free
Learn about the current blooms, bird sightings, and animal antics in the Garden while hiking the trails with a Naturalist. The Garden Highlights Hike will focus on what is of interest on the day that you visit, so each hike will be a new exploration into the most up-to-date curiosities and wonders of the Wildflower Garden.
Garden Sensory Tour for Families \$5 per person/\$10 per family
Discover how we depend on our five senses to experience our environment. We will explore the natural sights, smells, and sounds of the Garden in a sensory-filled adventure for all ages.

Native Tree ID Tour

\$5 per person/\$10 per family
A Garden Naturalist will lead you on a tree identification tour using features such as bark, buds, and branches. You will learn how to recognize many of common species and may even see some in flower! Handouts will be provided.

New Moon Garden Tour

\$5 per person/\$10 per family
Pre-registration required
As darkness washes over the Garden an array of sounds, smells and sights greet our senses. Be on the look out for bats, nighthawks, owls, and breathe in the refreshing evening air. Meet at the front gate.

Summer Wildflower Tour

\$5 per person/\$10 per family
Join a Garden Naturalist to explore the blossoms of July in the woodlands, wetland and prairie. We will explore the Garden trails while learning about the natural histories of the plants flowering during your visit.

Wildflowers of the Wetland and Prairie Tour

\$5 per person/\$10 per family
Join a Naturalist on a wildflower-focused tour of the Garden. You will have a chance to walk the Garden trails while learning about and looking for wildflowers of early summer including Showy Lady's-Slippers, shooting stars, and more.

Special Classes

Sketching Nature- Journaling your Journey with Nature,
Led by artist Sandy Muzzy Cost: \$89.00
Summer Session- Thursdays, 4pm-7pm
July 21 and 28, August 4 and 11
Class fee paid to Instructor: \$8.50 for 6 x 10 Arches Watercolor Travel Pad - or bring along your own sturdy journal.

Join us in the Garden as we journal and record our impressions of summer in nature. Watercolor will be our primary medium. We will also experiment with a variety of different techniques including pen and ink, watercolor pencils, mono-printing and making your own pigment from soil. Come with previous experience or none! Be prepared to have a great time and get your hands dirty. We will make a personal, lasting record of summer's layered beauty at the Eloise Butler Wildflower Garden.

Nature's Healers- Medicinal Plants of the Garden

Led by Cynthia Thomas Cost: \$15.00 per class
Mondays, 5:30-7:00 pm
July 18 - Summer Woodland and Wetland Medicines
August 1 - Wonderful Weeds: Common Plants, Uncommon Powers
September 5- Introduction to Wild Medicine
Join herbalist Cynthia Thomas in the field to learn about the simple use of plants as medicine and food. Learn about the healing properties of plants growing in the Garden and your own backyard. Find out which plants are traditionally eaten in the spring for their health benefits. Discover how to identify and use several favorite medicinal plants species.

Special Events

Wonder in the Wildflower Garden Hands-on Art Exploration Series

April through August, join artists from the Minneapolis Institute of Arts for third Saturdays in the Wildflower Garden. Find out what artists wonder about. Explore inspirations from the museum and nature. Then roll up your sleeves and make some art! Pre-registration is encouraged to guarantee a space. We will try to accommodate all walk-ins.

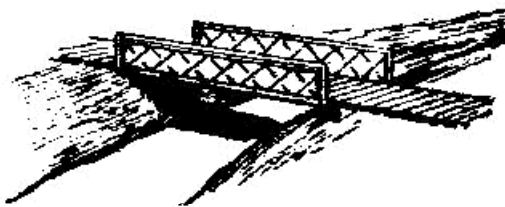
Bee Paintings with artist Paige Dansinger

July 16th, 1:00-3:00pm Cost: Free!
Meet outside of Martha Crone Visitor Shelter in the Garden
Paige Dansinger is a local working artist, art historian and innovator. Her paintings of flowers and bees are collected internationally. Join Paige for an afternoon of painting some of the Garden's most beloved insects, the benevolent bees. Paige was inspired by the color woodblock print "Chrysanthemums and Bee" by 19th century Japanese artist Katsushika Hokusai housed at the Minneapolis Institute of Art.



July 7, 2009	Lunar eclipse here at dawn.
July 14, 2011	Full moon, the Ojibwe Midsummer moon, rises at sunset.
July 19, 1983	Severe thunderstorms across central Minnesota with 115 mph winds. Sometimes the "downdraft" winds in front of a these storms when a thunderhead collapses are more damaging (stronger, more widespread) than winds associated with small tomadoes.
July 21, 1983	High 95°. Crickets chirping loudly in the twilight. They chirp faster when it's hot. To use the "cricket thermometer", count the chirps in 14 seconds and add 40 to estimate the temperature in Fahrenheit.
July 22, 2010	Start of the three-week-long Perseid meteor shower. Best viewing is in the northeast sky around August 10 when meteors are more frequent, in the evening before the moon rises and the sky is fully dark.
July 27, 2009	Solar eclipse in India, China, Japan, south Pacific. Next one in U.S. is 8/21/17.

View From the Bridge



Weedy Vines - July 2011

Creeping, crawling, climbing, entwining - Vines! Weeds of this column are somewhat vine-like in appearance. Some grow to be quite long; others don't grow very long in Minnesota. Such weedy vines include: Bindweeds, Buckwheat, Crown Vetch, Cucumber vines, and Poison Ivy.

Hedge Bindweed, Field Bindweed, and Wild Buckwheat are very similar in appearance. However, Hedge and Field Bindweeds are perennial weeds; while Wild Buckwheat is an annual weed. Studying leaf shape is the main way to differentiate between various species. Hedge Bindweed and Wild Buckwheat have pointed leaves; while Field Bindweed leaves a bit more heart-shaped. Bindweed flowers are much larger and more conspicuous; Buckwheat flowers are smaller and inconspicuous. Hedge Bindweed flowers are one inch to three inches long; and Field Bindweed flowers are one half inch to one inch long. Wild Buckwheat flowers are only one-eighth inch long!

Hedge Bindweed and Field Bindweed are very similar. The genus name *convolvulus*, like English adjective convoluted, comes from a Latin verb root meaning "to entwine". Another common name, Possession Vine, very aptly captures the manner with which Bindweed overtakes other plants or the passion with which a gardener will attack a prized perennial that has become matted with suffocating and shading Bindweed infestation. Though Bindweed lacks tendrils to grab and grasp, Bindweed easily and quickly entwines around other plants towards sunlight.

Bindweed is similar to common Blue Morning Glory, and like Morning Glory, its flowers open during warm mornings and will last usually one day. Flowers may possibly last a bit longer if days are not too warm.

One- to two-inch-wide flowers are white and sometimes tinted with pink tones. Though as such by botany texts, it is difficult to discern that five petals are fused together to form a two- to three-inch-long funnel with narrow tube.

Field Bindweed (*Convolvulus arvensis*) 1' to 6' tall, climbing vine, Morning Glory Family, non-native

One- to two-inch-long leaves are triangular or arrowhead-shaped. Its small leaves are smooth-edged. Leaves grow alternately along the climbing, twisting stem. Bindweed is perennial. Bindweed grows on dry, sunny fields. Field Bindweed prefers disturbed soils, abandoned lots or fields, and sometimes lawn edges.

Bindweed creeps through gardens and upon reaching fences, shrubs, other climbing plants, will grow in an expanding tangle upward on and through the support.

Hedge Bindweed (*Convolvulus sepium*), 3' to 10' tall, climbing vine, Morning Glory Family, Native

Though similar to Field Bindweed, Hedge Bindweed has larger leaves and has more prominent "earlobes" that extend beyond and on either side of leaf stems. Its arrowhead-shaped leaves are two to four inches long. **Wild Buckwheat (*Polygonum convolvulus*) Also known as Ivy or Climbing Bindweed or Black Bindweed, Native**

Wild Buckwheat is a fast growing annual vine that germinates from seed from mid-May through June. Heart-shaped leaves and growth habit resemble Field and Hedge Bindweed. Flowers bloom from July through October. Though individual flowers are insignificant, flower clusters are fairly prominent, and so are seed heads.

Crown Vetch (*Coronilla varia*) 1' to 2' high, climbing vine, Pea or Bean Family, non-native

Crown Vetch was likely introduced from Eurasia and North Africa accidentally as an impurity in alfalfa; and it was once planted by highway departments to stabilize cut banks of roadways. A variety of Crown Vetch seems to have colonized much of the damp swales just south of Cedar Lake Trail and just west of the Lowry Hill/Kenwood trail exit. There, it has formed colonies 20' to 40' across. Crown Vetch can fix nitrogen into soil - acting as a living fertilizer. Crown Vetch grows in sun, along roads, open fields, prairies; and tolerates dry conditions as well as occasionally wet areas. Flowers are pink and white, and form round clusters, not unlike clovers.

Though flower clusters themselves are one inch wide; individual flowers are quite small - 1/4" to 1/2" wide. Leaves are two to four inches long with twelve to twenty-five oval leaflets, one-half to three-quarters inch long.

Bur Cucumber and Wild Cucumber resemble each other except for small differences in leaf shape as well as other characteristics.

Bur Cucumber (*Sicyos angulatis*) 2' to 10' long, climbing vine, Gourd Family, Native

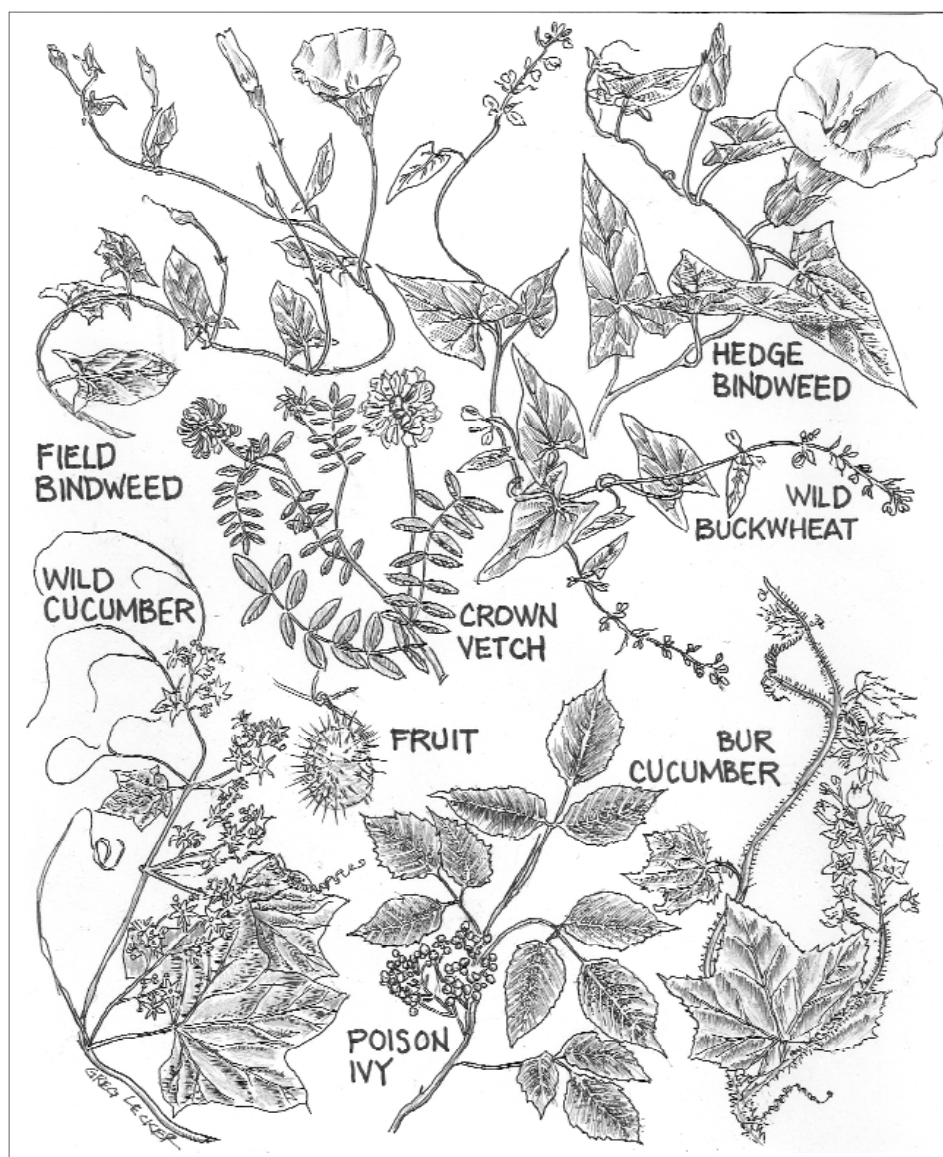
The bloom consists of a one to two-inch wide round cluster of small white flowers. Individual flowers are one-half-inch wide, each with five pointed petals. Large, five-lobed leaves resemble maple leaves and are about four to six inches wide. The fruit is a cluster of up to ten ovoid seed pods, each covered with spines. Seed pods are about one-half-inch to one-inch long. Annual Bur Cucumber blooms in summer and fall. Bur Cucumber vine grows in wet shade of deciduous woods, along streams, lakes, and wetlands. Bur Cucumber grows long, curly forked tendrils from its hairy stems. Its leaves, flower stalks, and tendrils spring from a common point on the vine. Bur Cucumber stems are bristly, tendrils are hairy, and leaves are hairy as well.

Wild Cucumber (*Echinocystis lobata*), 2' to 10' long, climbing vine, Gourd family, Native

Male flowers are showy, with six thin petals, flowers form in four to eight inch long clusters. The fruit is a single large two-inch-long pod covered with rubbery spines. The pod dries to a papery, see-through shell containing four seeds, each in its own compartment. The dry fruit lends credence to the nickname, "Lace Pants". Wild Cucumber grows in wetter areas than Bur Cucumber. Leaves resemble Bur Cucumber but are more sharply pointed - so much so that leaves resemble a star. Wild Cucumber stems are rarely hairy.

Poison Ivy (*Toxicodendron radicans*) Native, 6" tall and often longer.

Poison Ivy is a woody perennial shrub or vine that spreads by underground



runners as well as by seeds. "Leaves of three, let it be" cautions against contacting the toxic oils of its leaflets, which are indeed grouped in clusters of three. The center leaflet has a longer stem than the other two leaflets. Leaflets are oval or diamond shaped, pointed at the tip and narrowing at the base. Leaflet edges may be coarsely toothed or slightly lobed. Leaf surfaces may be smooth and glossy, or dull and slightly fuzzy. Leaf color varies from yellowish-green through green to reddish-green. In fall, leaves turn an attractive red or reddish-orange, and white fruits develop. Reportedly, fruits are a nutritional food source for some birds and animals, though not for humans!

Woody brush-killer herbicides are the best control for poison ivy. As is the case when addressing many hardy vines, multiple applications are necessary to eradicate the tough Poison Ivy. As with most plants, fall is the best time to apply herbicide since plants are more actively transporting various substances into root tissues; and that is where herbicides are most effective. Extreme caution is advised when removing even dead plants, which retain toxic qualities. In particular, burning is ill advised, since the smoke transports the then airborne toxins to both distant skin as well as to internal membranes and lung tissues. Unfortunately, Poison Ivy seems to be spreading fairly rapidly along trails connecting Cedar Lake Trail to Hidden Beach (East Cedar Lake Beach), including trails bisecting the Red Cedar tree spiral found within Cedar Lake Park.

Sources:

Wildflowers of Minnesota, Field Guide by Stan Tekiela, Adventure Productions, 2001.
Weeds of the Northeast, Richard H. Uva, Joseph C. Neal and Joseph M. DiTomaso; Cornell University Press, 1997
Wildflowers of the BWCA and the North Shore, Mark Sparky Stensaa, Kolath + Stensaa Publishing, 2003
Newcomb's Wildflower Guide, Lawrence Newcomb; Little, Brown, and Company, New York - Boston, 1977
University of Minnesota Extension Service Yard & Garden Briefs, <http://www.extension.umn.edu>

Discover the Wide World of Weeds...it will be worth your effort!

Greg Lecker, U of M Extension Service Master Gardener, Minnesota Master Naturalist Volunteer

CLEAR (Body & Home)

HOISTIC THERAPIES
FOR BODY & HOME



Meet CLEAR practitioner:

Theresa May

"Heaven On Earth Healing" LLC
Providing holistic care services
since 1988

OFFERING:

Hypnotherapy
T.L.C. Transformational Life Coaching
Energy Medicine
Shiatsu Therapy

Offering healing, inspiration and wisdom to individuals and corporate audiences.

"...I thank you for the healing treatments for my shoulder and inspiring direction to alternative therapies..."

Mike Bullock,
Former GM chemical engineer
Sawtwin, MN

Find more healing stories and Theresa's bio at:
www.heavenonearthhealing.com

Heals • Rejuvenates • Nurtures
Simplify • Organize • Balance

612-377-7677
www.clearbodyandhome.com

406 Cedar Lake Road SE
BRYN MAWR



Youth & Schools

For the Love of Skiing

Anwatin skier Glory Duda shares her experience working with the Nordic Ski Foundation to plant trees in Theodore Wirth Park.

I came out to plant trees at Theodore Wirth because I care very much about the environment and I know that it is suffering and anything we can do as a community is very important. I also just love doing anything that helps me be closer to the earth. I thought it was still a TON of fun even though it was raining really hard. I guess the rain just made me feel even closer to the earth with the planting of new life that I know skiers will be able to enjoy for years to come. Being covered in mud and dirt was no dampener either. I love skiing for the same reasons. You get to be outside and soaked in snow and you can sometimes just joke with your friends or beat them and have fun. And it's also kind of an escape from the real world on the trails with just the snow and trees and occasional house. I am definitely anticipating next ski season to see how the trees are doing, or even before then just walking along. Skiing is definitely going to stay with me forever and so will the memories of planting the trees.

- GLORY



Neighborhood Toddler & Pre-School Playgroup

Come and Join other parents/caregivers and children for a playgroup every second and fourth Tuesday from 2:30pm - 4:00pm. Please note- this is a New Day and Time for the summer. The plan is to meet at the Bryn Mawr Meadows playground with our rain location Bryn Mawr Presbyterian Church. Please feel free to bring older siblings especially for the outdoor location and the indoor location is best suited for younger children. Updates about weather and location will be posted on the Bryn Mawr Presbyterian Church facebook page the morning of the playgroup. If you have additional questions please contact Heather at 612.381.1543. Thanks!!

Local Teen Jumps to State Title

Minneapolis Southwest High School Junior, Tatyana (Tate) Pashibin won the 2011 Minnesota State Championship in high jump with a leap of 5-feet, 7-inches. Tate also holds the new Minneapolis City record (5-feet, 6-inches), breaking the old record of (5-feet, 5-inches) which was set in 1985. She jumped a personal best of 5-feet, 8-inches in this year's sectional meet. Tate is also an award-winning triple-jumper and an accomplished gymnast and volleyball player. She lives in Area 6 and her very proud parents are Janet and Gary Pashibin.



Loppet Adventure Camps for Kids

The City of Lakes Nordic Ski Foundation in collaboration with the Minneapolis Parks will hold four Loppet adventure camps during the summer of 2011. At Adventure Camp, kids age 9-13 will experience the year-round athletic lifestyle of a cross country skier through a variety of outdoor activities and will learn the basics of training for aerobic sports, and cross country skiing in particular.

Five to seven kids are paired with an experienced counselor and the kids rotate through different stations each day. The kids will experience roller-skiing, mountain biking, hill bounding or pole hiking, orienteering or adventure racing, swimming and canoeing, capture-the-flag and other games, they will learn to wax skis – and generally have a great time learning some of the basic skills of a cross country skier.

- Location: Theodore Wirth Park – Wirth Beach Picnic Pavilion on Glenwood Avenue (between Xerxes and Wirth Parkway). Camp activities will take place throughout Theodore Wirth Park.

- Cost: \$180 (\$170 for foundation members)

- Mountain bikes, roller-skis, etc are provided by the nordic ski foundation.

- Link to registration:

www.loppet.org/programming

Schedule :

- 9 a.m. – 4 p.m.

- Session II: July 11-15

- Session III: July 18-22

- Session IV: August 8-12

For more information contact:

John Swain

Adventure Camp Director

612-604-5333

swain@cityoflakesloppet.com

Anwatin Middle School Presents “A Year with Frog and Toad” on June 3-4, 2011

Singing birds and dancing cookies, “A Year with Frog and Toad” based on the classic children’s books by Arnold Lobel, tells the story of two best friends and their swamp companions across four seasons.

Many local students were part of the production. Kevin Vang (Area 5) played Father Frog and Merideth Jolstad (Area 4) was Mother Frog. Lika Corson and Laurel Struwe (Area 6), Quinn Morris and Yvonne Powers (Area 5), and Marie Rassier (Area 4) were all in the ensemble and had featured singing and dancing roles. Anwatin alumnus, Grant Jolstad (Area 4) ran the sound board.

This was the 14th annual musical theater collaboration between Anwatin Middle School and Project SUCCESS. Thanks to everyone who came out to see the show!

- JoEllyn Jolstad, Area 4 (Costume designer)





Graduations 2011

**Congratulations to all the Graduates and their families.
Good luck in the future as you pursue your dreams!**

John Behrendt, Area 3

John graduated from Southwest High School. He is studying Sound Design at the Institute of Production and Recording in Minneapolis and is the Co-founder of Jawntech, a computer and technical repair company. His parents are Kelly and Trish Behrendt.

David Borden, Area 6

David John Borden, son of Steve Borden and Debra Darby graduated from Southwest High School this spring. David plans to attend MCTC in the fall to pursue his general requirements and then continue his studies to receive a business degree. He hopes to use his degree in the area of music.

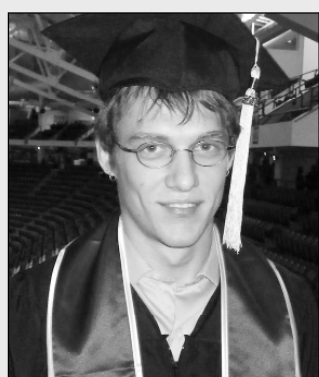


Rachel Boyle, Area 4

Rachel A. Boyle graduated from Southwest High School class of 2011 with high honors. She is planning to attend Brandeis University in Waltham, Mass. to study studio art and cognitive science or linguistics. Her parents are Frank and Beth Boyle.

Mitchell Erickson, Area 6

Mitchell Erickson graduated with highest honors from South High School. He was treasurer of the National Honor Society. He played soccer for four years and was a captain his senior year. He pole vaulted for two years and won the city championship. After a "Tigerific" experience at South, Mitchell will attend the U of M Twin Cities College of Science and Engineering. His proud parents are Bette and Ed Erickson.



Joseph Heili, Area 3

Joseph Heili graduated in May 2011 with a degree in biology from the College of Biological Sciences at the University of Minnesota. Joe attended Bryn Mawr Elementary, Anwatin Middle School, and Southwest High School, all which prepared him for the challenges of college. He is the son of Bob Heili and Jessica Wiley, who are very proud of him.

Adam Jensen, Area 4

A graduate of Hopkins High School, Adam will be pursuing a Bachelors Degree in Fine Arts at the University of Minnesota this fall. Adam holds a third degree black belt in karate, earned through the National Karate Academy of Martial Arts in Hopkins where he teaches part-time. He is an active sparring competitor in local and regional martial arts tournaments and recently took first place for highest points in his North Central Karate Association division for 2010-2011.

Adam was voted "Most Artistic" by his high school graduating class. Adam is a life-long resident of Bryn Mawr, son of Tom Jensen and Carolyn Bastick. Congratulations, Adam!



Talia Kaatz, Area 3

Talia Kaatz is a 2011 graduate of the Southwest High School. She was a National Merit Finalist and earned a Presidential Award for Outstanding Academic Excellence SWHS Senior Music Award for participation in Southwest Singers, Chamber Singers, Women's Choir and being a cast member of the musicals 42nd Street and Les Miserable.

Talia plans to attend Goucher College in Towson Maryland this fall, where she will continue to explore dance and theater. Talia is the daughter of Larry and Kathryn Kaatz.

Joseph Krenz, Area 5

Joseph Z. Krenz graduated from Southwest High School on June 3rd. Joey participated in Jazz Band, Hockey, Tennis and Visual Arts while attending Southwest. He plans to go to the University of Minnesota this fall. His parents are Mike Krenz and Louise Mader-Krenz.



Eli Pasmanter, Area 2

Denise Pasmanter and Robin Brown are pleased to announce the graduation of their son, Eli Daniel Pasmanter, from the International Baccalaureate program at Southwest High School. In addition to the academically rigorous IB program, while at Southwest he participated in several sports and a variety of extra curricular activities. He will be attending the University of Minnesota in the fall as a math major with the long term goal of

law school. We are very proud of Eli and his accomplishments and share in his excitement about his future plans.

Evelyn Reilly, Area 6

Evelyn Charlotte Reilly graduated from South High School with High-Est Honors. She is a National Merit Scholar and will be attending the University of Minnesota in the fall. Evelyn is the daughter of Kristin Anderson and Bob Reilly.

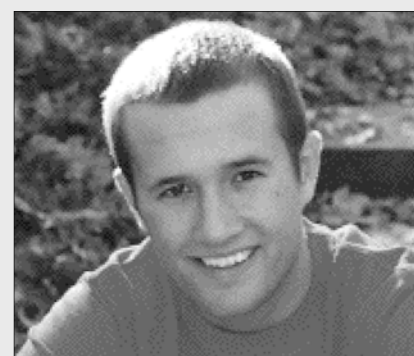


Nathan Schade, Area 6

Nathan Schade graduated from Southwest High School on June 3, 2011. He plans to attend MCTC in the fall and will concentrate on the study of genetics. His parents are Brenda Beyer and Barry Schade.

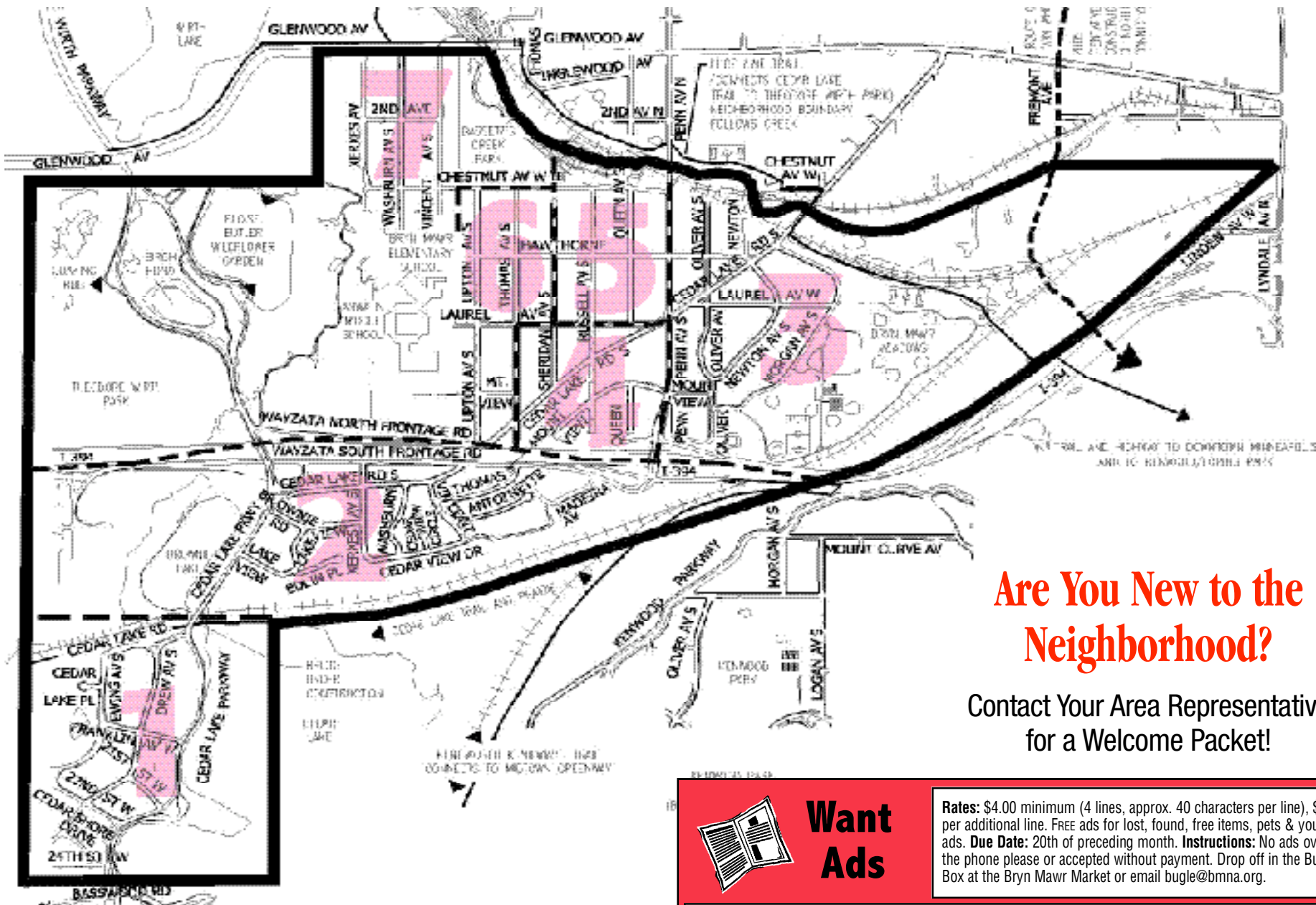
Travis Ullman, Area 5

Travis James Ullman graduated from Southwest June 3rd 2011 He was on the SW Varsity baseball team, with ending his last season carrying the 2nd Best ERA in the Metro in a regular season! He is attending the U of M Twins Cities in the fall. His parents are Robyn and Dick Ullman.



Simon Wolfe, Area 6

Simon is a graduate of South High School's class of 2011. He is attending Minneapolis Community and Technical College in the fall and plans to transfer to the Academy of Art University in San Francisco, CA. He's also hoping to mix some travel and civil service in while going to school. His parents are Pamela and Martin Wolfe.



Are You New to the Neighborhood?

Contact Your Area Representative for a Welcome Packet!



Want Ads

Rates: \$4.00 minimum (4 lines, approx. 40 characters per line), \$.50 per additional line. **FREE** ads for lost, found, free items, pets & youth ads. **Due Date:** 20th of preceding month. **Instructions:** No ads over the phone please or accepted without payment. Drop off in the Bugle Box at the Bryn Mawr Market or email bugle@bmna.org.

Be sure to check references, State Agencies, BBB, etc. and inquire about bonding when using any new service.

THE BRYN MAWR NEIGHBORHOOD ASSOCIATION

PO Box 16437, Minneapolis, MN 55416

BMNA Board Members

President:	Marlin Possehl	377-5662
Co-Vice Presidents:	Ted Kiesselbach	377-3467
Co-Treasurers:	Dave Holets	922-8274
	Liz Lindholm-Peterson	750-2882
Secretary:	Sandra Gay	374-4606
NRP Steering Committee Chair	Scott McLaughlin	374-9494

Area Representatives

1	Greg Froehle	926-2882
2	George Seebach	670-4111
	Lynda Shaheen	374-4201
	Dave Wahlstedt	282-7611
	Susan Verrett	377-7447
3	Jeanne Carter	381-1473
	Rick Carter	381-1473
	Jessica Wiley	374-3481
4	Christopher Etz	378-2987
	Paul Markert	381-2604
5	David Logsdon	377-9689
6	Jay Peterson	377-4677
	Barry Schade	377-8152
7	Steve Harvey	374-3613
	Andrew Kraling	226-6249

Bugle Corps

Editor	JoEllyn B. Jolstad	377-8968
	bugle@bmna.org	
Neighborhood Coordinator	Patty Wycoff	377-4565
	pwcoordinator@comcast.net	
Police Liaison CCP/SAFE	Tim Hammett	673-2866
Display Ads	Deryck Jolstad	377-8968
	djolstad@msn.com	
Subscriptions	Kevina Munnich	374-1854
	kevina@munnich.com	
Mailing Address	P.O. Box 16437	
	Minneapolis, MN 55416-0437	
Drop Off Box	Bryn Mawr Market,	
	behind the counter	
Web Site	bmna.org	

The Bryn Mawr Bugle is an open-forum newspaper published by the Bryn Mawr Neighborhood Association. Content is based entirely on volunteer submissions which may be emailed to bugle@bmna.org. Articles and letters to the editor will be printed at the discretion of the Editor. The Bryn Mawr Bugle is published every month except January. Distribution is free to Bryn Mawr residents; copies are also available at the Bryn Mawr Coffee Shop, the Bryn Mawr Market, Bryn Mawr Mobile and Cuppa Java. Subscriptions are \$21 per year. Opinion articles represent the opinion of the writer, not necessarily those of the Bryn Mawr Neighborhood Association or the Editor of the Bugle. The Bryn Mawr Bugle will print letters to the editor as space allows. Letters may be edited for length without altering the letter writer's message. Letters must be signed by the person who wrote them. Under the law, letter writers, like journalists, may not commit libel, be obscene, reveal names of juveniles accused of crime, invade personal space, or incite to riot.

Copy deadline for the August issue is July 20!

Display Ads are due July 20 Ads must be pre-paid & camera ready.

Call Deryck Jolstad at (612) 377-8968 or djolstad@msn.com for rates.

GENERAL ADVERTISING POLICIES: All ad copy is subject to approval by the paper, which reserves the right to reject or request changes to an ad. Ad placement does not imply endorsement by the BMNA. The advertiser, not the paper, is responsible for the truthful content of the ad. Readers use service/product providers at their own risk and are solely responsible for checking references, state agencies, BBB, etc.

FREE

FREE....7year old poodle/terrier mix looking for a loving home. Sammy has been an excellent dog and will be missed by his owner when she moves to an apartment for seniors. Please call 612-377-4120 if you would like to meet Sammy.

SERVICES

ARCHITECTURAL & GARDEN DESIGN:

Time to increase the "Appeal" of your house or yard & bring new life to your residence? Renovations, additions, new construction, gardens, landscaping, outdoor living areas, residential & commercial design. Award winning experience. Bryn Mawr resident. Larry R. Opelt Architecture & Design. Registered Architect, LEED AP. (612) 377-9670 or email: lropelt@msn.com. website: lropelt.design.officelive.com

Band instrument lessons from your friendly professionals. Years and years of experience with all ages and levels of ability. Call Greg & Rose Lewis at (612) 377-3751.

CARPENTER: Retired carpenter needs side jobs. Call Jim Conover at (612) 366-9270.

CONCRETE/MASONRY: Repair or new, landscape, patio, driveways, sidewalks. Brick repair. Call Gary 651-423-6666.

CONTRACTING BY RON JOHNSON:

The handyman who can do all those projects at your house that you don't have the time to do. Large or small, almost anything. Over 20 years as a Bryn Mawr resident, and contracting experience. Many Bryn Mawr and local references. Will take emergency calls. Call 612-501-4470 or email: Rondives@comcast.net.

DOG WALKING & YARD WORK: Reliable 18-year old (life long Bryn Mawr resident) available for local dog walking, cat/pet sitting and yard work. Experienced, references. Call Adam (612) 718-7699. Rates negotiable.

Drafting & Design Services: Save money on your next home improvement project by owning your own design & plans. Invite competition to your project. Certified draftsman with 34 yrs. experience in exterior/interior design. Kitchens, baths, entertainment/family rooms. New & existing construction, electrical/lighting plans. Bryn Mawr resident for 26 yrs. Call Wayne Crooker at 612-377-6648 or email: wecrooker@msn.com

Ed Erickson Construction: Decks, porches, room additions and interior remodeling. Carpenter and licensed general contractor. Nineteen years Bryn Mawr resident. Local references. 374-1618.

GUITAR LESSONS:

Experienced teacher. Call 612-926-6826 and leave your phone number.

Handyman Services - 1st Hour Free! Just about any project or fix around the Home, inside or out. I'll work with you or just get it done. Mechanical engineering degree + many years of handyman experience. Bryn Mawr Area 2 resident for 21 years. Call Dave Wahlstedt at 612-281-7611 or email dwahlstedt@gmail.com.

Jay's Cleaning Service. We offer home & business cleaning, shoveling & dog yard clean-up. One time, weekly, bi-weekly & monthly service available. Day, evening & weekend appointments. Licensed, insured & bonded. Office: 763.566.2260 Website: www.jayscleaningservice.com

LAWN SERVICE: Lawn mowing, spring & fall cleanup, shrub & tree trimming. Premier Lawn & Snow, Inc. providing reliable service with quality results for SW Minneapolis since 1987. For prompt estimate call Dennis (952) 545-8055.

PAINTING SERVICES. Julian the Painter & Crew, specializing in beautifying "vintage homes". Exteriors, interiors, wall & ceiling repair, wallpaper removal, enameling, color consultation & FREE estimates. Best rating on Angie's List. Lic/Bond/Ins. A Bryn Mawr staple since 1994. Call (612) 710-7071 or (612) 377-9925.

QUALITY PAINTING SERVICES: Interior/exterior. Free estimates. References. Please call Jim Sogaard (763) 389-0604.

REMODELING. Windows and doors replaced. All types of siding installed/repared. Fences and decks. Custom tile installation, sheet rock, taping, and finish carpentry. Local references, free estimates. Tom 612-824-1554

Sweepie Cleaning: Quality house cleaning at reasonable rates. Call Pamela for free estimate, 922-9084.

VOLUNTEER OPPORTUNITY

WANT AD MANAGER FOR BUGLE: Join the Bugle Corps! Call 612-377-8968 or email bugle@bmna.org.

WANTED

WANTED: MODERN 1950s-1970s FURNITURE, lamps, household items, artwork, etc. Vintage rock n roll t shirts, posters & related music items. Vintage motorcycle helmets. Vintage paint by numbers. Herman Miller fiberglass chairs. Vintage Black Americana items. Give me a call before you have a sale or throw things away. I will always pay a fair price. Thanks! Richard 612-529-7040.

YOUTH SERVICES

BABYSITTER: Experienced, kid-loving & Red-Cross certified 12-year old is up to babysitting children 1.5 to 9 years old, preferably in Bryn Mawr. References available. Call Hal at 612-374-9014.

BABYSITTER Experienced, responsible: 12 years old, loves kids. Call Merideth (612) 377-8968.