



BRYN MAWR BUGLE

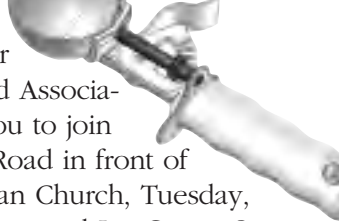
Published by the Bryn Mawr Neighborhood Association

July 2010

2010 BMNA ICE CREAM SCOOP-OFF

Tuesday, July 20, 6:00-8:00 p.m.

Ours sponsors:

The Bryn Mawr Neighborhood Association invites you to join them on Cedar Lake Road in front of Bryn Mawr Presbyterian Church, Tuesday, July 20, for the fourth annual Ice Cream Scoop-Off.

This re-make of the traditional Ice Cream Social, involves sampling ice creams donated by several local ice creameries. Once again, Adele's, Ben & Jerry's, Eddy's, Kemps, and Sebastian Joe's are sending their best confections. Just like in the past three years, everyone will have a chance to try as many flavors as they like and then vote for their favorite.

But this event is more than just frozen treats. We will have the street blocked off so you and the kids can socialize with neighbors. You can also enjoy the music, provided by The Percolators.

So, dust off your dancing shoes, prepare to have your taste buds delighted and come out and enjoy some summer fun!

Decision-making Matrix from Neighborhood Ash Borer Committee

Neighbors face difficult decisions as the emerald ash borer continues to threaten trees in Minneapolis. Three choices face those with ash trees on their property. 1) do nothing, 2) treat the trees, or 3) remove the trees. There are pros and cons associated with each choice and a multitude of factors to consider. The decision-making matrix to the left can help with thinking about the choices. The BMNA Ash Borer Committee continues to investigate options for the treatment of trees. Meanwhile, one strong recommendation the committee has for our community is to take down small ash trees and replant now.

- Jessica Wiley, Area 3



Have an ash tree on your property?
You have a decision to make!

The Bryn Mawr Neighborhood Coordinator Contract is up for renewal and will be open to new applicants. Details on page 9.



BMNA Reporter

BMNA Minutes, June 9, 2010

Present: Larry Skov, Vice President; Adam Maki, Co-Treasurer; Greg Froehle, Area 1; Dave Holets, Area 1; Linda Shaheen, Area 2; Dave Wahlstedt, Area 2; Sue Verrett, Area 2; Jessica Wiley, Area 3; Dave Logsdon, Area 5; Jay Peterson, Area 6; Barry Shade, Area 6; Stephen Harvey, Area 7; Andrew Kraling, Area 7; JoEllyn Jolstad, Bugle editor/Community Schools Liaison; Scott McLaughlin, NRP chair,

Guests in attendance: Lisa Goodman, City Council Rep; Dylan Thomas, Southwest Journal; Rick Pertile, Area 3; Matt Stark, Area 4; J. Pam Weiner, Friends of The Wildflower Garden; Claudia Eglehoff, Wendy Nove, BM Presbyterian Church, Ted Kiesselbach, Area 7

1. Call to order & introductions

The meeting was called to order by Vice President Larry Skov at 7:05 in the Bryn Mawr Presbyterian Church. A quorum was present. Introductions made.

2. Approval of consent agenda

Minutes of last month's meeting. Today's agenda. Acceptance of this month's Financial Report; available at our website. Moved by Jay, seconded by Barry.

3. City Updates- Lisa Goodman, City Council Member

Lighting for BMNA downtown area approved. Lisa thanked neighbors for working on this. Repaving starting. Construction is allowed at 7:00 a.m. not 6:00!

Very impressed with the solar project; cutting edge. She congratulates the neighborhood for this. Lisa's office sent out News Bites-describes the funding for NRP; will be funded at 100%. No Lunch with Lisa in June; back in July.

4. Neighborhood Coordinator Update-

The ice cream social will held July 20. Scott passed out welcome packets that Patty sent.

5. Garage Sale

Final report- in the June Bugle.

6. Bugle Report-JoEllyn Jolstad

Distributed a copy of who is advertising with the Bugle. As announced at the annual dinner, the neighborhood coordinator position will be advertised this summer.

7. NRP Report-Scott McLaughlin

- Distributed a written report of strategies, summaries, and financial balances. Pointed out that the \$54,000 that was being held because of the 80% cap would now be available. Discussed the process for initiating new projects for NRP dollars. Send ideas to Scott for discussion. A small committee might be formed to work on the idea. All ideas are eventually approved by the BMNA board. Ideas should be placed within one of the existing NRP strategies. City NRP also needs to approve expenditures. Will put the NRP report on the website.

- We have 60 residents signed up for the June 17 and 22 CEE Energy workshops. There is a city wide competition-the neighborhood with the highest percentage of participants might receive a \$5000 bonus for the neighborhood. Continue to recruit neighbors to be a part of this. We want to meet our goal of 100 participants.

- Downtown project Is in the final stages of NRP approval. Taking down the sodium lights. Four LED street lights will be installed. LED lights will be ? the cost. Will involve cleaning up the corner of Cedar Lake Rd and Penn.

- Solar grant open house on June 16. Three types of solar projects being funded—solar voltaic, solar thermal water heating systems, solar space heating. NRP is supportive of options. Up to \$2000 given to neighbors with qualifying projects. We have \$40,000. A lottery will be held if there are more proposals than dollars.

- Rain Gardens-This will be a July project. In the process of organizing a committee; Dave Logsdon is chairing. Participants will receive a consultation and design plan for a \$25 co-pay. We are working with Betsy Rice look at a neighborhood wide rain garden and grant.

- Meeting with NCEC representatives-They are gathering data about neighborhood concerns. NRP program is phasing out, NCEC will be taking over. They have a website if reps want to find out more.

- Hour Car-Claudia Eglehoff Car can be used for weekends. Use is up but want to increase memberships. Regular joining fee is \$50; cutting joining fee in half. There is also a coupon in Blue Sky book.

8. Chimney Swift Tower Project-Rick Pertile / Claudia Eglehoff

Rick and Claudia submitted a proposal for a grant to build a chimney swift tower in Wirth Park. Barry moved, Dave L. seconded that we accept the offer of a grant given by the Audubon Society of Minnesota in conjunction with Parks and Rec for \$700. The neighborhood association will be the pass through agent.

Dollars will be used to build a chimney swift tower in JD Rivers Children's Garden. Rick presented information on chimney swifts, a declining species. They eat 10,000 insects a day. There will also be a kiosk. Grantors are requesting \$150 from the neighborhood association to pay for the education information on the kiosk. Steve shared a concern that construction at Wirth might conflict with this project. Claudia will pursue this. Rick will submit an article about chimney swifts for the Bugle.

9. Eloise Butler-Pam Weiner, President of the Friends of Eloise Butler Wildflower Garden.

Pam discussed the history of the Loppet. It was routed next to the back gate of Eloise Butler. Major trail grooming comes right next to the garden. In 2007 a proposal was made to reroute a small part of the trail away from the back gate. A change in commissioners, the south Wirth woodland project, and attention on south Wirth in general have moved this project forward. It's possible this may happen this fall. John Munger, President of the Nordic Ski Foundation, is cooperating with this plan. There could be disturbances if the trail is moved. Large equipment will need to be used. Pam would be willing to arrange a walk for anyone who wants to see how the path is changing.

10. BM Presbyterian Church Renovation - Wendy Nove, project chairperson

The church is breaking ground next month, around July 12; hoping to be done by December. Changes will make the building handicapped accessible, create more friendly spaces for kids, increase energy efficiency, and provide more usable rooms. The addition will be on the east end of the building. The construction trailer will be kept on the property. Coordinating with street work. Email wendy@wknove.com if you have questions.

11. Website Review-Dave Holets

Dave would like suggestions. At this time he's putting everything on the front page. The website costs us \$200 per year Question about whether we can put advertising up on the website; would that raise dollars for the neighborhood association? As we look to the future, what are our goals for the website? The Communication Committee will address this at their next meeting.

12. Update on BMNA Community Projects

- Downtown kiosk project-no news
- Ash Borer project-Jessica Wiley - Article in June Bugle. Creating a graphic for helping neighbors make decisions. Still exploring whether we can get a reduced rate for neighborhood-wide use of a treatment.

THE BRYN MAWR NEIGHBORHOOD ASSOCIATION

PO Box 16437, Minneapolis, MN 55416

BMNA Board Members

President:	
Marlin Possehl	377-5662
Vice President:	
Larry Skov	598-0753
Co-Treasurer:	
Ben Horn	382-7982
Adam Maki	343-3346
Secretary:	
Claire Plank	307-620-5980
NRP Steering Committee Chair	
Scott McLaughlin	374-9494
Community School Advisory Council:	
JoEllyn Jolstad	377-8968
Area Representatives	
1 Greg Froehle	926-2882
Dave Holets	922-8274
2 George Seebach	
Lynda Shaheen	374-4201
Dave Wahlstedt	
Susan Verrett	377-7447
3 Rick Carter	381-1473
Jessica Wiley	374-3481
4 Christopher Etz	378-2987
Paul Markert	381-2604
5 David Logsdon	377-9689
6 Jay Peterson	377-4677
Barry Schade	377-8152
7 Steve Harvey	374-3613
Andrew Kraling	226-6249

The Bryn Mawr Bugle is an open-forum newspaper published by the Bryn Mawr Neighborhood Association. Content is based entirely on volunteer submissions which may be emailed to bugle@bmna.org. Articles and letters to the editor will be printed at the discretion of the Editor. The Bryn Mawr Bugle is published every month except January. Distribution is free to Bryn Mawr residents; copies are also available at the Bryn Mawr Coffee Shop, the Bryn Mawr Market, Bryn Mawr Mobile and Cuppa Java. Subscriptions are \$21 per year. Opinion articles represent the opinion of the writer, not necessarily those of the Bryn Mawr Neighborhood Association or the Editor of the Bugle. The Bryn Mawr Bugle will print letters to the editor as space allows. Letters may be edited for length without altering the letter writer's message. Letters must be signed by the person who wrote them. Under the law, letter writers, like journalists, may not commit libel, be obscene, reveal names of juveniles accused of crime, invade personal space, or incite to riot.

COPY deadline for the August issue is July 20!

Display Ads are due July 20 Ads must be pre-paid & camera ready.

Call Deryck Jolstad at (612) 377-8968 or djolstad@msn.com for rates.

GENERAL ADVERTISING POLICIES: All ad copy is subject to approval by the paper, which reserves the right to reject or request changes to an ad. Ad placement does not imply endorsement by the BMNA. The advertiser, not the paper, is responsible for the truthful content of the ad. Readers use service/product providers at their own risk and are solely responsible for checking references, state agencies, BBB, etc.

Bugle Corps

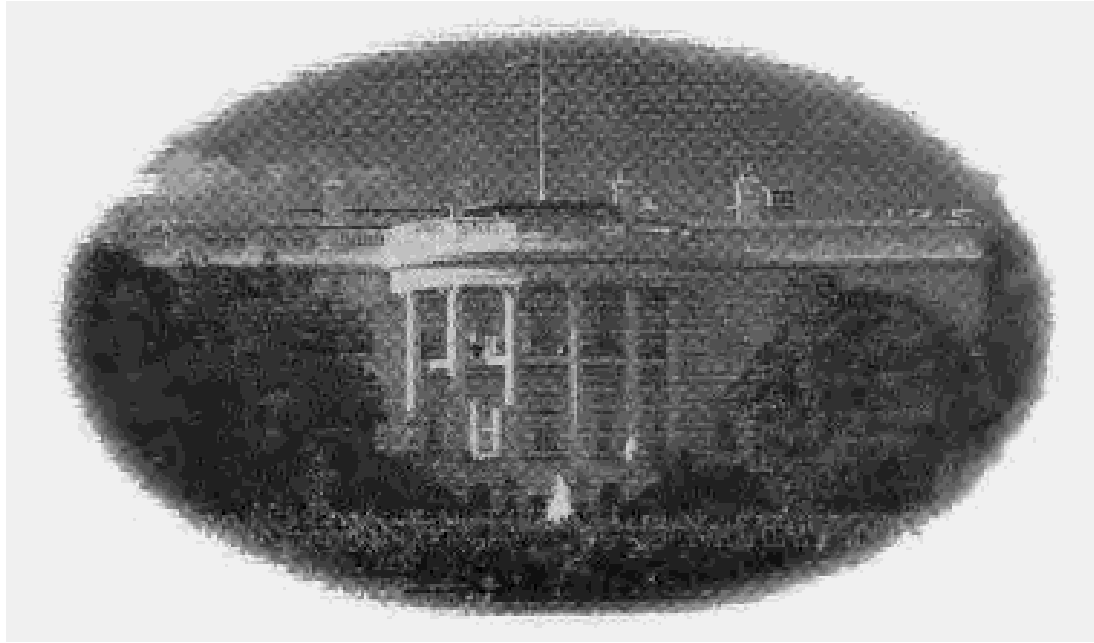
Editor	
JoEllyn B. Jolstad	377-8968
bugle@bmna.org	
Neighborhood Coordinator	
Patty Wycoff	377-4565
pwcoordinator@comcast.net	
Police Liaison CCP/SAFE	
Tim Hammett	673-2866
Display Ads	
Deryck Jolstad	377-8968
djolstad@msn.com	
Want Ads/Wildlife Watch	
Carolyn Bastick	377-8457
cj0159@aol.com	

Subscriptions	
Kevina Munnich	374-1854
kevina@munnich.com	

Mailing Address	
P.O. Box 16437	
Minneapolis, MN 55416-0437	

Drop Off Box	
Bryn Mawr Market,	
behind the counter	

Web Site	
bmna.org	



This Fourth of July, take a
moment to remember these
great American names:
Washington, Franklin
and Kalitowski.

Jim Kalitowski

REALTOR

He's been around your block.



Recycling

www.ci.minneapolis.mn.us
/solid-waste
(612) 673-2917

Bryn Mawr Recycling Schedule

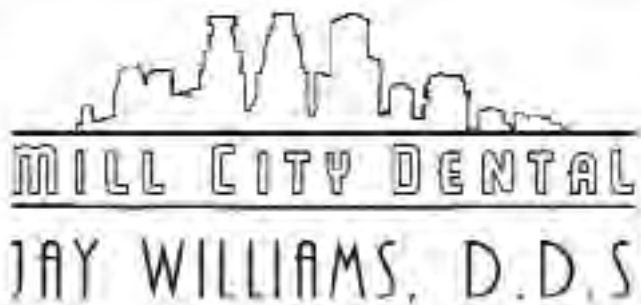
	Monday	Tuesday	Wednesday
Area 1	July 12 July 26	July 1	
Areas 4W, 5W, 6, 7	July 19	July 6	
Areas 2, 3, 4E, 5E		July 20	July 7

Use it up, wear it out, make it do, do without. Recycle.



CHIANG MAI THAI

Calhoun Square (612) 827-1606
3001 Hennepin Ave. S. Fax (612) 827-1635
Minneapolis, MN 55408



612-377-3740

2918 LAUREL AVENUE • MINNEAPOLIS, MN 55405

Bryn Mawr Presbyterian Church Welcomes You!

We Worship Each Sunday @ 10:30 a.m.
Nursery available for children 5 years & younger

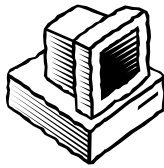
All Are Welcome Here!

COMPLIMENTARY ADVERTISEMENT In Exchange for BMNA Meeting Space



check us out at

www.BMNA.org



From the Editor

This past year, I have had the privilege of working with a VISTA volunteer at Anwatin Middle School. VISTA (Volunteers in Service To America) is an Ameri-Corps program. Applicant sites develop sustainable projects that are taken over by school staff when the one-year placement ends. Candidates review the applications and request an interview from programs they think are a good fit to their interests.

Many VISTAs are recent college graduates who aren't sure what their next step will be. Participants who complete the program receive a modest living allowance and tuition assistance or student loan forgiveness.

Amanda Bigaouette was the gem who was placed at Anwatin. A Minnesota girl, just back from Johns Hopkins, earning money for graduate school. It has been enriching to work with her and watch her plans for the future unfold. While she was working at the school, she applied for and was accepted into the Medical School at the University of Minnesota. She begins in August.

While at Anwatin, she created a system for recruiting, training and placing volunteers. She made inroads toward a partnership with the Quest employees, and revitalized the Peace Council. She was an invaluable support to me in my

work. She even listened to me read drafts of my Bugle column aloud, on more than one occasion and answered that tricky question, "how does this sound?"

But, turnabout is fair play and I, introduced her to the man she is marrying in July - Mr. Kuch, the 6th grade science teacher. This Gulf War vet is a man re-born with this sweet, giving woman who now in his life.

I also introduced her to the lovely and talented, Bryn Mawr. The neighborhood and its schools did a good job of showing her what it means to be part of a community and set a new standard for how citizens can care for one another.

I will be working with a new VISTA at Anwatin next year. She is moving back to the twin cities for the first time since her parents relocated to Rhode Island when she was a teen. I recently got an email from her wondering about the school and the neighborhood.

It was an absolute joy to tell her about our small town: safe, fun, pedestrian & bike friendly, parks & lakes, shops & pizza, close to downtown, on the bus line, even an HourCar! What more could a cash strapped young woman with a good heart, sense of adventure, and shoe leather as her primary mode of transportation, ask for?

- JoEllyn Jolstad, bugle@bmna.org

NORTH END HARDWARE **Do it Best** Exceptional Service

**Have a job?
We have a Tool.**



**Northend Rental
Just Rent It!**

NORTH END HARDWARE & RENTAL
at PENN and LOWRY

Hours: M-F, 7 a.m.-6:30 p.m.; Sat, 7 a.m.-5 p.m.
Darryl Weivoda, Owner

612-529-9151 • Northendhdwr@aol.com

more CounterTalk

by Dave Logsdon,
davesmagnets@gmail.com



“When a man feels the pangs of loneliness, he is able to create. As soon as he reaches detachment, he ceases to create, for he loves no more.”
-Lu Xun (Chinese writer)

So much beauty, so much art, so much perspective, travel does freshen up the muse. How you keep me down on the Bryn Mawr farm, after I've seen Paris!

Canary in the Coal Mine

Bryn Mawr is a special, very green corner of the USA. Some “nattering nabobs of negativity” have cracked wise to me when the BRYN MAWR hedge was planted that it would turn into a weed patch. I replied that that would be our “canary” and it would be time for the community to pull together. Over the last few years Greg Lecker, our peripatetic Master Gardner, has created a monster! His boulevard plantings and annual planters, have been a marvelous, gorgeous treat for residents and visitors to the downtown Bryn Mawr area. Now Greg is spending most of his time and energy on his “San Simeon”, remodeling his entire house on Laurel avenue. Most of the businesses have stepped up and have done their own weeding and planting, but some spots are definitely hurting. I'm an obsessively-compulsive weeder (It's like eating potato chips, you can't pull just one weed!), so I can do some of that, but when it comes to planting, I'm out of my league. People have stepped up, but there is an opportunity to do more. Trust me, I know that time is precious these days, but if you desire to a little bit more for your community, this could be your chance.

Three and half cups of tea

In my April column, I talked about Sara Miele's first grade class at Parkview Elementary and their Pennies for Peace Project. Well, I happy to report that they raised \$243.30 in pennies, nickels, and dimes! This money will help build a school in Afghanistan. The cool thing about this program is that the schools much teach boys and girls to be eligible for assistance. The picture

below shows Sara, her assistant Katie Sewell with the class. Parkview, a Montessori program located at Bryn Mawr Elementary which has been terminated. My understanding is that the whole school made contributions as well customers at the Bryn Mawr Market!

A scoop of this.....

On the 20th of July, the community gets together to collectively go off their diets for a night!. It's call the Annual Scoop Off and it features different ice cream makers competing for your vote. There's music, some crazy dancing, and a whole lot of ice cream. I'd say one of the favorite events, especially if the weather co-operates, that we hold here in Bryn Mawr. If you want to see a 65 year-old man busting some serious otherworldly moves on the dance floor, you won't want to miss this little get-together!

J.D, Eloise, and the Swift...

As even a casual observer of this column can attest, there is precious little shoe leather expended in pursuit of my little stories. Occasionally cool stuff falls in my lap! At the Bryn Mawr Neighborhood Association's June meeting, we voted on a co-sponsorship along with the Audubon Society to build a chimney swift tower alongside the J. D. Rivers Project site on Glenwood Avenue near Wirth Lake.

When I attended a Twins game I noticed that the chimney swifts are apparently Twins fans along with everyone else in town. By the way, "Kirby the Kestrel" I believe, is a Bryn Mawr resident. A few days later, my walking partner and I decided to check out the J.D. Rivers garden on one of our neighborhood walkabouts because I wanted to

point out where the swift tower was to be built. While there, we couldn't help but notice a lot of mulch, a lot of topsoil, a lot of plants, and not a lot of stuff in the ground growing.

I mentioned out loud, “I should look into this.” Usually, that's as far as the investigation goes, but the next day I was headed back from some errands and decided to take the long way home via the parkway and down Glenwood past J.D. Rivers.

As I turned off of Glenwood, I noticed a lot of students working on the garden! I begrudgingly got out of my car and walked a hundred feet to talk to the very nice women from the Park Board supervising the project. Kristi and Koby were very impressed to be interviewed by such important columnist (What did you say the name of that paper was?). They said they get as many as 300 young people working on the garden during the summer. They could always use more help and very open to community members chipping in any way they can. They are planning to have chickens again this year even though last years chickens and chicken coops were the victims of vandals last year. They hope to build a more secure coop this year and are signing up people for coop watch duty!

Even by my standards that was quite a digression and I still haven't found a way to digress over to the Eloise Butler part of the story. By

the way, in co-operation with the Loppet, the folks at the Flower Garden and Bird Sanctuary hope to restore the natural area that was turned into a skiing superhighway for the annual Loppet. I am glad to see that the "Loppets" came to their senses before the "Fringed Gentian" became the "Lunatic Fringed Gentian". You know how ferocious those garden people can be.

Did I mention....

My head has been full of visions of rain gardens all over Bryn Mawr! The money is available to make these visions a reality. Join me and my little buddy Scott McLaughlin on the 21st of July for the first meeting of the Bryn Mawr Community Garden Group! We will meet at 7:00 p.m. in the basement of Cuppa Java. This group will discuss strategies regarding rain gardens and other public gardens in the neighborhood. Anyone concerned about the future of water quality in Minnesota and beyond will get a rare opportunity to affect change in a hands-on, proactive way.

While I'm sure there must be something else I could blather on about. You've heard it all before. HOUR CAR this, support local business that, and so on, etc.. Instead I'll retreat to a quiet wooded place and wrap my head around profound concepts like "stud services for chihuahuas" and stuff like that.



BRYN MAWR MOBILE

612-377-4743

Your full service repair facility. A wide selection of Bait and Tackle with any of your DNR license requirements. We are a AAA Road Service provider. We can help you with a lock out, gas, towing or jump starts. Call us about our towing discounts. We also tow away those junkers for you at no cost, just provide proof of ownership. Call us today to get your vehicle ready for tomorrow.



EXIT REALTY METRO

One Grosvenor Terrace, Minneapolis

www.ERMetro.com

Real Estate Services

Residential Relocation Leasing Short Sale / Investment

NOW SERVING OUR BRYN MAWR NEIGHBORS!

Carsen Brooks (Broker/Owner) 612-720-6555

Natalee Enger (Relocation) 612-396-2612

David Timmons (Leasing) 612-964-2957





Professional Painting and Finishing

- STAINING AND VARNISHING
- WOODWORK ENAMELING
- WALLPAPER REMOVAL
- WALL AND CEILING REPAIRS
- SPRAYED OR ROLLED CEILINGS
- WATER DAMAGE REPAIR
- HIGH QUALITY AND AFFORDABLE
- REFERENCES AVAILABLE

Painting with an Accent
Call for a Free Estimate

CALL 763-300-7692
HARALD MUTHS, OWNER



National Night Out August 3rd

Register your event by July 14

National Night Out is a 26 year tradition in the city of Minneapolis. Neighbors come together to meet each other and to build stronger and safer communities. By knowing each other, neighbors can watch out for one another and can report suspicious activity that may occur on their block. National Night Out can be a group of neighbors gathering for

lemonade, ice cream, or a pot luck dinner. Or it could be a game of volleyball or a bike rodeo. Each block creates its own event that reflects the people who live and work on the block.

National Night Out is quickly approaching. This year it's Tuesday, Aug. 3. Now is the time to start making preparations for your block party. The City of Minneapolis wants to make it easy for block clubs and neighbors to plan and have your block event. For more information, visit: www.ci.minneapolis.mn.us/nno.

You can also apply to close the street for your NNO party. Street closure is free if you apply by July 14. You need permission of 75 percent of your neighbors to be approved for street closure – please have their names and addresses when you apply (you do not need their signatures). Remember to register your event even if you aren't blocking your street. It's easy to do and helps us track the success of National Night Out. There is information available on the City's website to help you plan and carry out your event as well, including free clip art you can use on your event flyer.

To register your event or apply to block off your street, just visit www.ci.minneapolis.mn.us/nno/register.asp. You can also register your event and apply for street closure by calling 311 (or 612-673-3000).



DEAN BUILDERS

Residential, Remodeling, Additions,
General Contracting
Licensed, Bonded, Insured

Jeffrey Dean
(612) 377-6413
Cell (612) 245-7369

602 Thomas Ave. So.
Minneapolis, MN 55405



Milda's Cafe

HOURS:
Mon.-Fri. 6:00 a.m.-3:00 p.m.
Closed Saturday & Sunday
Pasty Served Mon./Wed./Fri.

1720 Glenwood Ave. N. • Minneapolis. **612-377-9460**



The banks and insurance companies can get along fine without your money! HOURCAR provides all of the convenience of owning a car with none of the trouble. For just a few dollars an hour, you can reserve a car in seconds, drive it immediately, and let someone else worry about parking, maintenance, and insurance. It's the smart way to drive!

For the next month, HOURCAR is cutting the membership application fee to \$25.00 for those who live or work in the Bryn Mawr and Harrison neighborhoods.

Residents and those who work in the Bryn Mawr and Harrison neighborhoods can join HOURCAR for one half the usual \$50 fee during July. To redeem this special offer, residents should enter promotional code **"BMH610"** on their online HOURCAR applications or mention this code when calling HOURCAR.

learnjoinreserve **www.hourcar.org**



HOURCAR
CAR-SHARING FOR THE TWIN CITIES

THE MCKNIGHT FOUNDATION

The Bryn Mawr Neighborhood Association

The Bryn Mawr HOURCAR is supported by a \$12,000 grant from the **McKnight Foundation** matched by \$10,000 in NRP funds from the **Bryn Mawr Neighborhood Association**. We thank the following local businesses and residents who also support HourCar:

Gold Sponsors	Bronze Sponsors
Bryn Mawr Neighborhood Business Association	Ellen Abbott & Jerry Krause, residents
Jan Wolf, realtor	James Kallitowski, realtor
Neighborhood Sponsor	FinnStyle, the online business
Cherie Peterson, realtor	Bryn Mawr Mobil



Gardens

Third Annual Hennepin County Master Gardener Learning Garden Tour

The University of Minnesota Extension Master Gardener Learning Garden Tour will take place Saturday, July 10, 2010, from 9 a.m. to 4 p.m.

Visit eight beautiful gardens designed and maintained by Extension Master Gardeners, offering great inspiration along with the latest gardening techniques. This year's gardens are clustered in a convenient route through the Plymouth and Wayzata area. Eight on-site demonstrations provide an educational dimension, for both beginning and advanced gardeners, and include:

- “Native Plants – How to Go Wild in Your Yard”
- “Landscaping for Family Life”
- “Container Gardening – Spotlight on Welcome”
- “Kitchen Gardens: Grow your Passion for Flavor”
- “Gardening with Wildlife” (Live Raptor Demo included)
- “Inviting the Pollinators – Ideas to Attract Those Bees, Butterflies and Birds We All Love”
- “Serenity Garden – Indulge Your Senses”

“Gardening is a Process -Learning What Works for You”

Admission includes entry to all eight gardens, brochure with garden descriptions, locations and driving instructions, on-site demonstrations, and free handouts on selected yard and garden topics. All proceeds benefit University of Minnesota Extension Master Gardener community programs in Hennepin County.

Price: Tickets are \$15 per person prior to the event or \$20 the day of the tour. Tickets can be ordered online at <http://www.hcmg.umn.edu/Master-Gardener-Learning-Garden-Tour.html>, at the Hennepin County Master Gardener office located at 479 Prairie Center Drive, Eden Prairie, or by calling 612-596-2130. This event will take place rain or shine. All sales are final.

- Greg Lecker, Area 3



BMNA Community Garden Group Meeting
Wednesday, July 21st
at 7:00 pm

Contact David Logsdon
377-9689 or
davesmagnets@gmail.com
for more information

LANDSCAPE GARDEN DESIGN & CONSULTING

TEMENOS

Garden Services

612.377.4491
www.temenosgardens.com

Edible Gardens - Bird/Butterfly Gardens - Native Plant Gardens - Rain Gardens
Hillside Gardens - Cottage Gardens - Boulevard/Front Yard Gardens - Woodland Gardens

Bryn Mawr Soap

On sale at Bryn Mawr Market and Twin Cities area co-ops

www.brynmawrsoap.com 612-374-3613

www.SUSANandANNIE.com



Bryn Mawr
208 Penn
2 bed/2 bath



Bryn Mawr
200 Oliver
2 bed/2 bath
Double Lot



2621 Xenwood
St. Louis Park
2 bed/2 bath

Check our website for more great listings



srstryker@cbburnet.com 612-839-6360 eachild@cbburnet.com 612-819-8785





BMNA

Applications Now Available For Community Solar Power Grants! More Participants Wanted!

Meeting Recap: Guidelines

The BMNA is happy to announce that the June 16th Solar Panel Workshop was a popular event with dozens of solar panel enthusiasts and six contractors in attendance. The community solar program guidelines were reviewed and the grant application was distributed. A meet-and-

greet session followed the kick-off meeting.

In brief, the BMNA and NRP will offer grants in the range of \$1000-\$3000 to property owners for the purchase or lease of a solar panel system that provides electrical power, hot water heating, or space heating. There are no income limits and only

one grant is allowed per property. Eligible properties include single family houses, businesses, owner-occupied multi-unit homes, condos, and town homes. Attendance to the workshop was not a prerequisite for the grant! The complete guidelines and application are available at www.BMNA.org

ing, bathing, washing, or radiant floor heating and a basic system for a small family requires 64 square feet of non-shaded roof or lawn area. A solar space heating system can provide all or part of the energy required to heat a room. At a minimum, the solar panel system will need 8 hours of continuous sun exposure each day. Roof slope, roof orientation, shading, age of roof, mechanical system design and age, and solar radiance are factors the contractor will use to determine if the property is appropriate for a solar panel system. Similar to the purchase of a house or a car, the expense can vary dramatically depending on the model and size of your system, but keep in mind that rebates and other incentives could reduce the cost by more than 50%.

To Participate in the Community Solar Program:

1. Review the Project Guidelines at www.bmna.org
2. Review the Grant Application at www.bmna.org
3. Call a solar panel contractor of your choice to schedule an

Contractors, Systems, and Design Factors

We wish to extend a special thanks to the participating contractors for providing the expertise to answer the many great questions from the audience; Blue Horizon Solar, Ecovision Electric, Innovative Power Systems, Powerfully Green, Solarway 6000, and Solarflow Energy. The contractors discussed their available technologies.

The most heavily referenced solar technology, Solar photovoltaics (PV) systems, provide some or all of your home's electrical power needs and a system typically requires 100-300 square feet of non-shaded roof or lawn area. A basic solar thermal system can provide hot water for cook-



BMNA Community Solar Project grant workshop on June 16, 2010
- Photo by Paul Markert

Bryn Mawr Neighborhood Association Calendar - July 2010

All meetings are open - everyone is welcome. Neighbors are urged to attend and participate in meetings and activities of special interest to them.
Bryn Mawr Neighborhood Association and its committees meet at Bryn Mawr Elementary School during the school year, unless otherwise noted.

Sunday	Monday	Tuesday	Wednesday	Thursday	Friday	Saturday
BMNA meetings moved to Bryn Mawr Presbyterian Church during Minneapolis Public Schools summer break. (June 9-August 27, 2010)				1	2	3
Independence Day 4	Holiday Observance: 5 City offices closed, no mail delivery or trash collection	6	BMNA Meeting at 7 Bryn Mawr Presbyterian Church, 7pm	8	9	10
11	12	13	Register your 14 National Night Out Block Party by this date for no fee street closure.	15	16	17
18	19	Ice Cream 20 Scoop Off 6-8 pm on Cedar Lake Road	Community Garden 21 Group meeting at Cuppa Java (the base- ment) at 7:00 pm	22	23	24
25	26	27	28	29	30	National Night Out Against Crime Tuesday, August 3rd

appointment for a technical home assessment. Contractor lists can be found at www.eere.energy.gov or www.solar-estimate.org and www.bmna.org

4. Consult with the contractor to determine the most suitable system type and size for your property.
5. Fill out an application and submit to the BMNA for the first lottery deadline by July 10th, 2010. Applications will be accepted and placed on a waiting list if received after July 10th.

Why Solar and Why Now?

Ever thought solar power was too expensive or not practical for use in Minnesota? Surprisingly, Minnesota has equivalent solar power producing potential as Texas and Florida. Federal Income Tax Credits, Minnesota State Rebates, Excel Energy Rebates, and now the grant from the BMNA is going to greatly reduce the out-of-pocket cost as well as the pay-back period for solar panel systems! Our goal is to install 20 solar panel systems by October of 2010. This pilot program is attempting to place the Bryn Mawr neighborhood in a unique role as a leader in community-based solar energy so spread the word and encourage your neighbors to participate!

-Andrew Kraling
BMNA Co-Representative, Area 7, and
Community Solar Program Project Member

— BMNA Minutes continued from page 2

13. Standing Committee Reports

- Redistricting- no report
- Land Use-no report
- Schools Committee-Lynda Shaheen Committee met in May with school board member Pam Costain. Discussed board priorities and direction for the future. School Board election in fall. Article in Bugle will explain process.
- Traffic-no report
- Parks and Rec-no report
- Communications Committee – Jay Peterson
- Letter to the editor policy placed in Bugle.
- BFR Committee- no report

14. Treasurers Report

Membership letters mailed to those who have contributed in the past but not yet joined this year. Financial report available online.

15. Reports from BMNA Reps to Affiliated groups-

BCV-ROC— no report
SWLRT-no report
Cedar Lake Parks-no report

11. Discussion Items and Announcements

June 17th will not be at Wirth Park due to renovation. Will be at Mississippi North Regional Park. June 19. Dave Logsdon brought up a need for more volunteers for the community gardens and planters. Suggestions made to work with the NRP parks committee or the garden club. Dave Wahlstedt volunteered to follow up on this.

12. Adjourned at 8:54 PM

Submitted by Jessica Wiley for Claire Plank

Neighborhood Coordinator Hiring Process

Approximately two years ago, the BMNA Board agreed to write its staffing contracts for two years and stagger them so that one position renews each year. The board also decided to open the selection process to include outside candidates, besides those currently serving in the positions. This decision was based on a spirit of openness and in the interest of retaining the best people suited to our contract needs.

Our current contract with the Neighborhood Coordinator expires in December and the board will begin its process of accepting resumes this summer. This does not reflect any favor nor disfavor toward the person currently filling the position, presuming she becomes a candidate. Weighing the value of incumbency will be the responsibility of the selection committee.

This summer the board will review its scope of services to be provided under this contract, define our selection process and announce when we are prepared to accept letters of interest and resumes. Our intent is to have the contract position filled for 2011-2012 by the winter holidays.

Contact Marlin Possehl (president@bmna.com) if you're interested in further details as they develop.

SUPPORT THE BMNA!

We have some of the cheapest rates around

Why don't you advertise in the Bugle?!!

Ad Size	Residents	Non-Resident
Full Page	\$260	\$300
Half page	\$135	\$155
Quarter page	\$70	\$80
Sixth-page	\$50	\$65
Eighth page	\$35	\$45
Business Card	\$25	\$30
Inserts	\$145	\$170

(Inserts must be printed by you, double or single-sided.)

Color Available! - Call for Details.

For more information contact Deryck
(377-8968) djolstad@msn.com



Join us
and our
neighbors
to celebrate
summer!

LOCAL, ORGANIC AND SUSTAINABLE

- Heirloom vegetables and plants
- Meats, eggs & farmstead cheeses
- Artisan pastries & breads
- Chef demos & live music

2nd St. & Chicago Ave, Minneapolis (next to new Guthrie)
www.millcityfarmersmarket.org | 612.341.7580



2 for 1
regular admission
to the museum
(special events exempt)
must bring this ad
valid through 10/16/2010
Bryn Mawr Bugle



Show your market bags
for a Passion Fruit Bellini
or Cappuccino
(with brunch entree)
valid through 8/19/2010
Bryn Mawr Bugle

EVERY SATURDAY / MAY 8 — OCT 16 / 8 AM-1 PM



Parks www.minneapolisparcs.org

Eloise Butler Wildflower Garden & Bird Sanctuary

July is a great time to visit the Garden. Stroll under the thick woodland canopy to escape the summer heat, or visit the Garden in the cooler morning hours to enjoy the sunny prairie and all the blooms there. Watch birds flit about busy feeding their young. See evidence of pollinators' efforts as flowers turn to fruit; many berries and seeds begin to ripen throughout the Garden in July. Enjoy the longer daylight hours with an evening walk along the trails.

***Families can inquire at the Martha Crone Visitor's Shelter for Garden Scavenger Hunts. Just ask a volunteer or naturalist to borrow one!*

Program Registration:

To register for free public programs and fee based special programs, ask Garden related questions, or to inquire about plants in bloom please stop by the Martha Crone Visitor Shelter or call 370-4903 during Shelter hours. All programs begin at the Shelter unless otherwise noted.

Garden Hours:

The Garden is open daily from April 1st to October 15th from 7:30am to one-half hour before sunset.

Martha Crone Visitors Shelter Hours:

Monday to Saturday: 10:00am to one hour before sunset
Sunday: Noon until one hour before sunset

Directions:

The Eloise Butler Wildflower Garden and Bird Sanctuary is located 1/2 mile north of I-394 on Theodore Wirth Parkway. Metro Transit bus route 9 stops at Glenwood Avenue and Theodore Wirth Parkway, just a two-block walk to the Garden entrance.

July 2010 Programs & Tours

Friday, July 2nd

9:30-11am Wildflower Photography*

Saturday, July 3rd

7:30-9:00am Early Birders
10:00-11:00am Birding Basics
1:00-2:00pm Quaking Bog Tour
3:00-4:00pm Dragonflies and Insects

Sunday, July 4th

1:00-2:00pm Summer Nature Walk
3:00-4:00pm Walking History Tour of the Wildflower Garden

Wednesday, July 7th

6:00-7:00pm Evening Bird Watching Stroll

Thursday, July 8th

6:00-7:30pm Medicinal Plants of the Garden*

Saturday, July 10th

7:30-9:00am Early Birders
1:00-2:00pm Wildflowers of Wetlands and Woods
3:00-4:00pm Summer Wildflowers

Sunday, July 11th

1:00-2:00pm Prairie Wildflowers
3:00-4:00pm Gardening with Wildflowers
8:45-9:45pm New Moon Walk

Wednesday, July 14th

6:00-7:00pm Evening Wildflower Walk

Saturday, July 17th

7:30-9:00am Early Birders
10:00-11:00pm Birding Basics
1:00-2:00pm Dragonflies and Insects
3:00-4:00pm Summer Nature Walk

Sunday, July 18th

1:00-2:00pm Wildflowers of Wetlands and Woods
3:00-4:00pm Prairie Wildflowers

Wednesday, July 21st

6:00-7:00pm Evening Bird Watching Stroll

Thursday, July 22nd

6:00-7:30pm Medicinal Plants of the Garden*

Saturday, July 24th

7:30-9:00am Early Birders
1:00-2:00pm Quaking Bog Tour
3:00-4:00pm Summer Wildflowers
8:45-9:45pm Full Hay Moon Walk

Sunday, July 25th

1:00-2:00pm Walking History of the Wildflower Garden
3:00-4:00pm Binoculars & Field Guides for Families

Wednesday, July 28th

6:00-7:00pm Evening Wildflower Walk

Saturday, July 31st

7:30-9:00am Early Birders
10:00-11:00pm Birding Basics
1:00-2:00pm Gardening with Wildflowers
3:00-4:00pm Prairie Wildflowers

Program Descriptions

A Walking History of the Wildflower Garden

Join a Garden Naturalist for a tour full of fantastic tales about the Garden's history and the visionary heroine, Eloise Butler, who founded it and became the Garden's first curator at the turn of the last century. **Binoculars and Field Guides for Families** Binoculars, quick senses, and a good field guide are some of the essential tools naturalists and nature lovers of all ages use to explore the outdoors. Bring the family and learn how to use these cool tools to discover the wonders of the Garden. Appropriate for children ages 8 and up.

Birding Basics

If you have an interest in learning more about birds, but don't know where to start look no further. This program is designed to assist beginning birders develop techniques for successful bird watching. We will discuss binoculars and field guides, learn how to identify birds, and discover where to find them as we meander through the Garden. Bring binoculars and a field guide.

Dragonflies and Insects

Insects of all shapes and sizes abound in the Garden this time of

year. Learn about the pesky mosquito, the beautiful dragonfly and investigate other incredible insects. Join a Garden Naturalist on an insect filled tour of the Garden!

Early Birders

This program is designed for individuals who have some experience with field guides and binoculars, and wish to practice finding and identifying birds. In addition to bird identification, we will focus on birding by ear, bird behavior, and bird habitats. Bring binoculars and a field guide. Meet in the parking lot.

Evening Bird Watching Stroll

Join us after work for an evening stroll in search of avian life! Designed for beginners but experienced birdwatchers are welcome. Discuss binoculars and field guides, learn how to identify birds, and find out and where to spot them. Bring binoculars and a field guide.

Evening Wildflower Walk

Relax and revel in the beauty of this season as a Garden Naturalist leads you on a tour of the woodland, wetland, and prairie trails and the wildflowers that await your arrival.

Full Hay Moon Walk

Experience the Garden at nightfall. As darkness washes over the Garden an array of sounds, smells and sights greet our senses. Be on the look out for bats, nighthawks, owls, and breathe in the refreshing evening air. Meet at the front gate.

Gardening with Wildflowers

Join a Garden Naturalist on a wildflower tour of the Garden. This tour will focus on gardening with native plants. Explore the beauty of our garden and find inspiration for creating your very own wildflower garden. Handouts, including a list of native plant suppliers, will be provided.

New Moon Walk

Join a Garden Naturalist on a sensory-filled tour of the Garden. Enjoy walking the trails in the darkness of a summer's evening with staff. Meet at the front gate.

Prairie Wildflowers

Tour the prairie and discover the beautiful flowers and grasses that grow there. Learn about the history of prairies in Minnesota, how the prairie garden was created, and the methods used to maintain this lovely landscape.

Quaking Bog Tour

The bog is home to many unique plants with interesting adaptations for survival. Discover the characteristics that make a bog habitat what it is. Learn what is being done to preserve this special place. Meet at the Quaking Bog parking lot.

Summer Wildflowers

Join us for an afternoon walk to find the flowering plants of mid-summer scattered throughout the 15 acres of prairie, woodland and wetland that lie within the Garden gates.

Wildflowers of Wetland and Woods

Discover an ever-changing array of blooming wildflowers. Search for the Turk's-cap lily, black snakeroot and more. Join us for a leisurely stroll as we explore the Garden and the blossoms of the season.

Special Programs

Medicinal Plants of the Garden

Led by Cynthia Thomas
Thursdays, 6-7:30 pm
July 8 - Wonderful Weeds: Common Plants, Uncommon Powers
July 22 - Medicines of the Summer Prairie

Cost: \$15.00 per class

Join herbalist Cynthia Thomas in the field to learn about the simple use of plants as medicine and food.

Learn about the healing properties of plants growing in the Garden and your own backyard. Find out which plants are traditionally eaten in the spring for their health benefits. Discover how to identify and use several favorite medicinal plants species.

The Wildflower Garden is a sanctuary for native plants. Harvesting plant material from the Garden is strictly prohibited.

Wildflower Photography

Led by John Maciejny
Friday, July 2, 9:30am-11am
Cost: \$15.00 per class

Learning how to photograph the subtle beauty of native plants takes time, patience and the right tools. Join seasoned photographer John Maciejny in the field to learn about photographing wildflowers to capture their beauty, brightness and form. In this class participants will be taught basic techniques to create stunning floral images. Digital or film cameras are welcome.

Writing the Animal

Led by Jude Nutter
Week-long, 10am-12:30pm
August 2, 3, 5, and 6
Cost: \$75.00

Animals often feature strongly in poetry, either as accents or as the poem's main image. More often than not, such poems move beyond mere description and push the animal figure into the metaphorical realm. We can see this at work in most of D. H. Lawrence's animal poems, in Ted Hughes' "thought fox" and in the poems of Mary Oliver and Jane Kenyon, where the animal becomes a stand-in for some larger idea or concept. But how does this happen? Over the course of four weeks we will read and discuss a variety of poems in which the animal is used to embody and carry a larger message. We will also write and workshop our own animal poems. No experience necessary!

Introduction to Botanical Illustration

Led by Susan Boeckmann
Thursdays, 10am-12:30pm
August 12, 18, 26, and September 2
Cost: \$75.00

This fun daytime illustration class combines art with nature, as we use the beautiful surrounds of the Wildflower Garden to inspire us. Open to beginning and intermediate artists, the class will serve as an introduction to, or reminder about, the basics of: how to accurately draw what you see; how to match any color under the sun; and how to most effectively use your "tools" of shape, value, color and texture in order to best express the beauty of nature.

Chimney Swift Tower in Theo Wirth Park

A new home for chimney swifts will soon be erected near the J.D. Rivers Children's Garden in Wirth Park, thanks to a \$700 grant from the Audubon Chapter of Minneapolis to the BMNA. On Wednesday June 9, the BMNA Board officially accepted the grant and voted to allocate an additional \$150 for educational materials related to the tower. A third partner in the project, Minneapolis Parks and Recreation Board will do the actual construction of the tower with the attached educational kiosk. Audubon Minnesota is providing technical support.

Chimney swift populations have been in decline since European settlers arrived and our Eastern woodlands with large hollow trees began to disappear. At first swifts adapted well to masonry chimneys but as they too started to disappear or were capped with screens swift numbers continued their decline.

The construction of the tower will not only provide critical nesting habitat, but it will also provide a roosting site for the birds during spring and fall migration. Another benefit of the tower and kiosk will be to educate area residents and park visitors on the importance of chimney swifts in our ecosystem.

Swifts are very beneficial birds and a nesting pair and their offspring have been estimated to consume over 2,000 flying insects every day, many of which are biting flies and mosquitoes. Other interesting facts about swifts include:

- Chimney swifts winter in South America in the Amazon basin and return to North America in the spring to breed.
- Only one nesting pair will occupy a chimney during the breeding season and construct a nest which consists solely of sticks glued to the chimney wall with saliva. They will however allow non-breeding swifts to share the chimney with them.
- They have been called "flying cigars" due to their body shape and crescent shaped wings

• Swifts do not perch like other birds but instead cling to the side of vertical walls. Their tails are tipped with stiff bristles that help support them as they cling to the vertical wall.

• Although they are commonly mistaken by many as bats, their constant "chattering" is unmistakable in helping to identify the birds.

So next time you are out and about in the neighborhood look to the skies and listen for the little chattering bird that looks like a cigar, a bird that will hopefully soon be finding another new home near Bryn Mawr in Theo Wirth Park.

- Rick Pertile, Area 3



Bryn Mawr Homeopathy

Laura Bunz, M.D., L.L.M., M.P.H.
The Bryn Mawr Homeopathy
2600 North Wayzata Blvd
Minneapolis, MN 55405
ph. 612-207-8057

BRYN MAWR ALMANAC

July 7, 2009 Lunar eclipse in early evening, at moonrise.
 July 25, 2010 Full moon, the Ojibwe Midsummer moon. Recently I've had problems with yellowing leaves and die-back in tomatoes at this time of year, following a strong start. The likely cause is verticillium or fusarium soil fungus. Rotating where you plant tomatoes may help. Purchasing varieties labeled VF (resistant to these diseases) is a better bet.
 July 26, 1990 3 inches rain. On average, this is the warmest day of the year, and the sunniest week of the year. More sun and less humidity than in the first half of the month. Gardens need a lot of watering.
 July 30, 1999 Dewpoint 81°, highest in Twin Cities history.
 July 31, 1998 High 105°. I've recorded 7 readings in the 100s since 1975, all of them in July.

Rebecca Hahn Photography

Family & Senior Portraits...
 Think of me as your "Family photographer"
 Corporate Images • Destination Weddings
 Minnesota Arboretum's chosen Photographer

www.rebeccahahnphotography.com
 email: rahcomm@frontiernet.net
 612-790-2253

Tai Chi & Qigong
 Low impact exercise for Health & Well being
 Relieves stress & most common ailments

Local Daytime Classes
 Tuesday or Thursday mornings
 Open to all regardless of age or ability
 Call Colin Snow 612 377 6469
 Natural Step School of Tai Chi & Qigong
 www.naturalsteptaichi.com

WEEKLY MEETINGS OF ALCOHOLICS ANONYMOUS
 are held at Bryn Mawr Presbyterian Church,
 Cedar Lake Road and Laurel Avenue, on **Tuesdays at 7:30 p.m.**
 All interested people are invited to attend.

FEMME DE LA SWASHBUCKLE BOX

Christina Maginnis weaves a wacky web of disquieting and visceral vignettes splashed with multi-media and oddball theatrics as a girl delves deep into the abysses of life's bottomless box, dreaming up a seamy assortment of characters, including sailors as savivors, servants as voyeurs, stalkers as lovers and lovers as murder suspects only to plunge up to her own psychologic salvation.

With a musical miscelany of rockabilly, hip-hop, rappers and beerhall bands plus a haunting original score by Matthew Smith, the dancer takes you on a fire-started mission of a wandering soul. Christina is joined by the awesome talents of Steven Schroeder, Greg Walecki, Rachel Barnes, Debra McDevie and Jane Schockley.

369 shows in Minnesota's biggest, boldest performing arts event. **Admission: \$12 + \$4 admission button. Purses & discounts available.**

MINNESOTA Fringe

Ritz Theater Proscenium
 345 13th Ave NE
 Minneapolis, MN

Fr. Aug 6 @ 8:30 pm
 Sun. Aug 8 @ 4:00 pm
 Wed. Aug 11 @ 8:30 pm
 Fri. Aug 13 @ 10:00 pm
 Sat. Aug 14 @ 1:00 pm

Prices:
 \$12 + \$4 admission button
 Multi-show passes and discounts available

Tickets at fringefestival.org or call (661) 811-1111.

View From the Bridge

Aquatic Plants
July 2010

Across Minnesota, water plays a role in three biomes. In prairies and pothole lakes of southwest Minnesota, melting blocks of glacial ice formed shallow lakes, so-called “duck factories” because they provide habitat for breeding ducks. Stretching from northwest aspen parklands to soft hills in the southeast “driftless area”, are mixed deciduous forest. Particularly centered on the Twin Cities metropolitan region, these “Big Woods” are sculpted by big rivers: the Mississippi, Minnesota, and St. Croix Rivers. In north woods of northeast Minnesota are vast Boundary Waters lakes and Lake Superior.

Ideal growing conditions for algae and milfoil on city lakes resulted from a number of weather factors. Little to no measurable snow fell in March. April’s above normal temperatures melted lake ice earlier than usual, besting typical “ice out” dates for Lake Minnetonka by nearly two weeks. May began cool; but then warmed up. June turned out to be quite wet.

What differentiates a pond from a lake? Ponds are shallow enough that plants can grow across the surface of the water. Ponds often have muddy bottoms. By contrast, lakes are deeper and often have rocky bottoms – at least in northern Minnesota.

Plants reviewed in this month’s column illustrate three types of aquatic plants found in lakes:

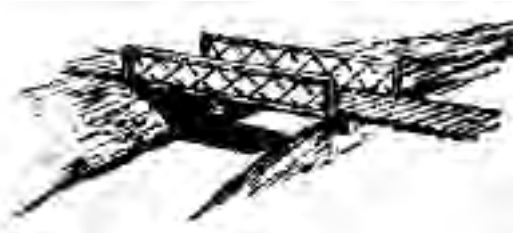
Cattails represents emergent types of aquatic plants – which are rooted and rise above the surface of the water

Duckweed represents floating plants – which float on the surface of the water with roots in water
Eurasian water milfoil represents submerged plants

Cattail (*Typha latifolia* and *Typha angustifolia*) 3 ft. to 10 ft. tall, though generally 6 ft. to 8 ft. tall

Flowers consist of cigar shaped forms atop stems. The flower is green during the summer, and turns brown and fuzzy in the fall and winter. The cigar forms are female flowers; male flowers are thinner forms atop plant stems. From thick roots grow long slender but tough stems of Cattail. Underground roots are rhizomes from which spread colonizing cattails. In late fall, root mats of cattails break off and float – occasionally partially clogging the channel between Cedar Lake and Brownie Lake.

Cattail grows in ditches, marshes, shorelines, and shallow areas of slow moving streams, ponds and lakes up to four feet deep. In Bryn Mawr, Cattails grow on the east side



of Brownie Lake, on the northeast corner of Cedar Lake, and in the wetland of Bassett Creek Park north of the intersection of Chestnut and Upton Avenues. Cattail stands stabilize lake edges, protect shorelines from wave-borne erosion, and provide fish spawning grounds. Cedar Lake Cattails shelter nesting grounds for Canada Geese and Red-winged Blackbirds. Beavers and muskrats eat plant stalks and roots.

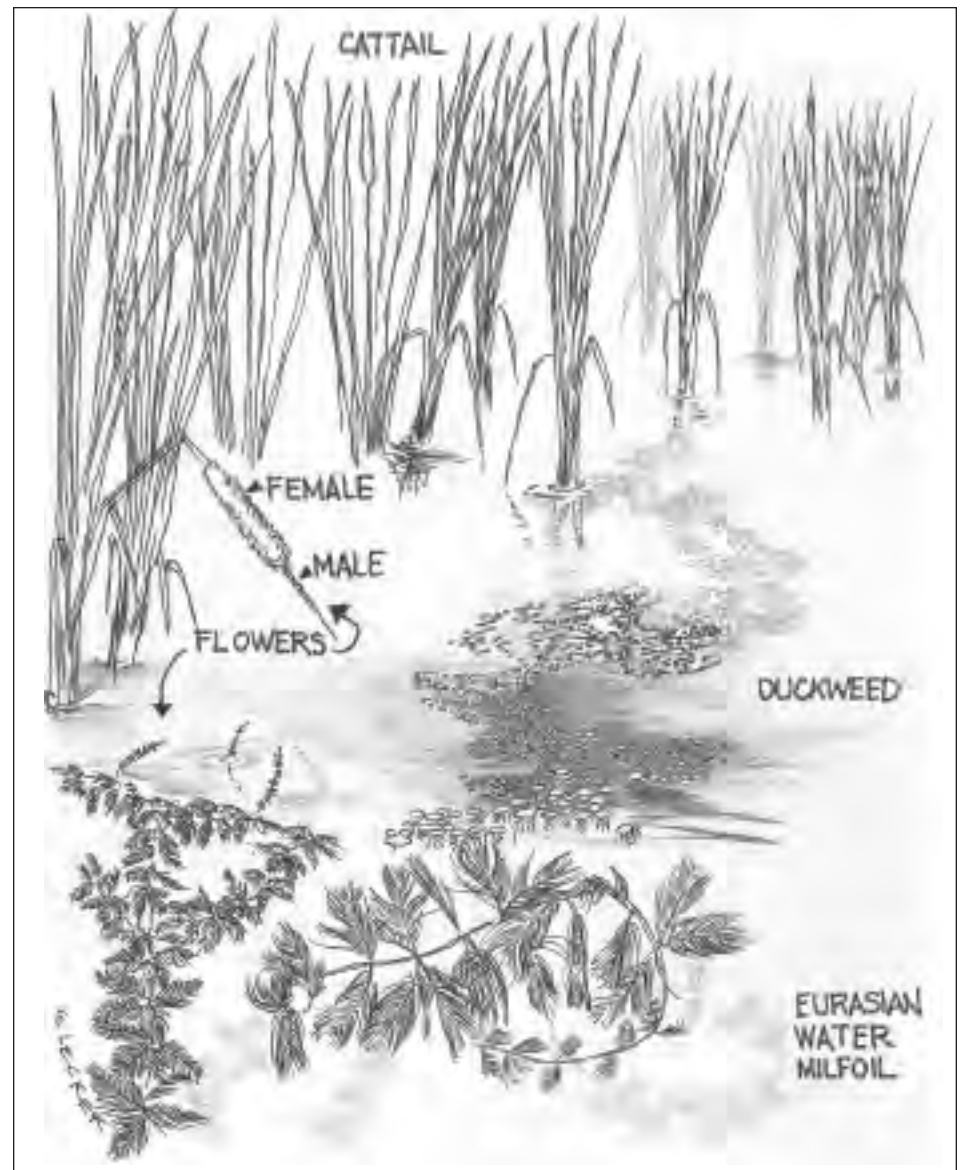
Common or Lesser Duckweed (*Lemna minor*) 1/16” to 1/8” wide and Greater Duckweed (*Spirodela polyrriza*) 1/16” to 1/4” wide

Duckweeds are tiny, floating green plants consisting of a leaf or a cluster of leaves with one or more roots dangling down into the water. Lesser Duckweed has a single root and consists of one to three leaves. Greater Duckweed has two or more roots and consists of one to four leaves. Duckweed grows only on small still water bodies, not on larger waters that are disturbed by wind and waves. In still water, Duckweed reproduces rapidly; and it may cover the surface of the water, shading out submerged plants. Duckweed grows on Mallard Pool near the rear (north) entry of Eloise Butler Wildflower Garden. Waterfowl and marsh birds eat duckweed. It also supports insects that provide food for fish. From a distance, Duckweed may be mistaken for algae; but unlike algae, Duckweed plants are not connected. Algae can grow both below the surface of water and on the surface of water; whereas Duckweed only grows on the surface of water. While interconnected algae hangs off paddles, Duckweed easily parts to allow boats and paddles to pass through water.

Eurasian Water Milfoil (*Myriophyllum spicatum*) 15’ long

Eurasian Water Milfoil is a submerged aquatic plant that forms large tangled mats within our chain of lakes – especially Cedar Lake, Lake of the Isles, and Lake Calhoun. Milfoil especially grows in nutrient rich lakes – so it may not be surprising that it is not as prevalent or noticeable on Brownie Lake which has healthy stands of both cattails and water lilies as well as dense woodlands. In addition, Eurasian Water Milfoil grows in areas of lakes less than twenty feet deep; and the center of Brownie Lake dives over 40 feet deep.

Certain characteristics distinguish non-native Eurasian Water Milfoil from our native Water Milfoil or other submerged aquatic plants such as Coontail. E. Water Milfoil stems are pale pink to reddish brown; and growing tips are often bright red. Appearing in late summer, E. Water Milfoil flower spikes



grow above the surface of the water on stalks that are about twice as thick as the plant stem itself. Near the surface of the water, E. Water Milfoil stems branch widely, netting one’s hands, feet, fishing line and hook, paddles, or propellers as one moves through a stand of E. Water Milfoil. Looking closely at this stem, one sees that there are three to five feathery leaves arranged in a whorl around floating stems. Each leaf is divided into twelve to twenty-one paired leaflets compared with five to nine paired leaflets for native Water Milfoil. One doesn’t need to spend much time counting each leaflet though. Lifting the two Water Milfoils will reveal a most distinguishing feature. When lifted out of the lake, E. Water Milfoil is a “fish out of water” — its leaves collapsing around the stem; while the native Water Milfoil, as well as Coontail leaves hold their bristly shape. The many divided leaves of all Milfoil may provide the origin of the plants name. The Latin word millefolium and the French word mille-feuille are translated as “thousand” “leaves”. The genus name Myriophyllum refers to the myriad of leaves and leaflets.

Eurasian Water Milfoil was accidentally introduced from Europe, Asia and Africa to United States lakes in the 1940s and 1950s. Unfortunately, a small fragment of plant stem and leaves, when transplanted from one lake to another lake on a waterbird’s foot or a boat’s propeller or trailer, can take root, reproduce and colonize a previously uninfected water body. Eurasian Water Milfoil was first detected in Lake Minnetonka in 1987. By 2004, the invasive pest had spread to one-hundred-sixty lakes, rivers, and streams. You can do your part to prevent spread of

this non-native by removing plants from your boat and trailer when removing it from the lake.

Control measures include mechanical, herbicidal and biological means. A mechanical removal method is the floating blue Milfoil harvester one sees on the Minneapolis lakes. Herbicide treatment may reduce the amount of Eurasian Water Milfoil; but complete eradication is very unlikely. In fact, heavy or concentrated application of herbicide damages native vegetation. Just as it does on land, a healthy ecosystem with much native vegetation can more effectively reduce spread of non-native vegetation in water. Since 1992, the State of Minnesota has supported research in the use of a native weevil to biologically control non-native E. Water Milfoil. Research results have not been conclusive as the weevil has reduced E. Water Milfoil in some lakes but not in other lakes.

A brief review of the complex ecosystem of aquatic plants highlights the importance of water in Minnesota!

Sources:

[Nature Smart: A Family Guide to Nature](#), Stan Tekiela and Karen Shanberg, Adventure Publications, Cambridge, MN 1995.

[Pond Life, Golden Guide](#), St. Martin’s Press, 2001.

[Minnesota Department of Natural Resources website](#), 2010.

Take time to look before you leap...into our lakes....it will be worth your effort!

- Greg Lecker, U of M Extension
Service Master Gardener, Minnesota
Master Naturalist Volunteer

Brownie Lake Area Plan Citizen Advisory Committee (CAC)

Project Scope and History

A Citizen Advisory Committee has been formed to advise park board staff and technical advisory committees, and consultants on regional park visitor interests in the development of a schematic plan for Brownie Lake regarding trails and connections, environmental improvements, recreation activities, and maintenance. The recommendations shall be informed by previous planning efforts, studies and reports that affect Brownie Lake and its surrounding parklands and trails.

Appointing Group or Elected Officer

Appointees: 15 Total

- 1 President of the Board (this appointment will be the chairperson)
- 3 Commissioners for Park Districts (2, 4 & 6: Olson, Tabb, Bourn)
- 2 Two At Large Commissioners: (Young, Fine)
 - 1 Council Members Wards 7
 - 1 Mayor R.T. Rybak
 - 1 Met Council Rep – Peggy Leppik (Golden Valley, St. Louis Park, South Minneapolis – Chain of Lakes area)
- 3 Bryn Mawr, Cedar-Isles-Dean, Kenwood Neighborhoods
 - 1 Cedar Lake Park Association
 - 1 Target Corporation
 - 1 City of Golden Valley

Vida Ditter (Area 6) will be the representative from Council member Goodman's office and Rick Carter (Area 3) has tentatively agreed to represent the Bryn Mawr neighborhood.

Brownie Lake has been included in the system of parkland and parkway maps and plans for at least 100 years. Long a pristine, but little noticed gem of a lake, Brownie has had a complicated history, and will continue to be impacted by an intertwined set of user interests, adjacent facilities and land uses in a relatively small area. Brownie Lake was considered a part of Theodore Wirth park lands earlier in the last century. However, being severed by Hwy. 12 (now Interstate 394) from Wirth Park, it is now included in the Chain of Lakes Regional Park Master Plan, also logical in that it drains into the other lakes in the Chain, starting with Cedar Lake.

The numerous previous plans by the Park Board and other agencies that affect Brownie Lake have, as a group, noted the natural beauty, serenity and plant and animal species that are typical of Minnesota "Big Woods" section of state natural resources mapping. They also remark on the continuing challenges to Brownie, including retaining its natural, oasis like character in a big city while addressing the many nearby influences that negatively impact its character, and the quality of its water and habitat. As part of those plans, recreation activities were proposed to be mostly natural

resource based and low impact, such as walking, bird watching and canoeing. This park, like other regional parks, also functions as a park for the neighborhood, offering a respite from the typical sights, sounds and frenzied activities of a major metropolitan area.

The Lakes District operates and maintains Brownie Lake. In conjunction with other organizations, Lakes District staff has already successfully addressed some of the issues or needs surrounding the lake. However, trail condition, both on street and at the lake edge, as well as their conditions, will need major funding to redesign and construct to current standards. Given this, a public process that meets Metropolitan Council Regional Park Policy Plan requirements will be initiated to advise staff, consultants and the Board on an Area Plan for Brownie Lake and its park surroundings.

A combined staff and technical advisory committee will also be formed to provide expertise on design, construction and operation of the various components of the Area Plan. This committee will include staff from applicable MPRB departments, as well as invitations to participate to outside agencies that have jurisdiction over various parts of the Brownie Lake area, to area community organizations, the City of Lakes Loppet, our attorney as needed, the State Historic Preservation Office (SHPO), environmental organizations, and the cities of Golden Valley and St. Louis Park.

Staff will also begin the process of sending an RFP (Request for Proposals) out to appropriate consultants to handle such tasks as facilitating the CAC, landscape architecture, preparing a final report, assisting with approvals with appropriate agencies and organizations, engineering, construction and related design documents, a project memorandum, permits, bidding, construction observation, project meetings, reporting, pay requests, final close-

out, record drawings, and warranties. A staff committee will be formed to evaluate the consultant teams and provide a recommended team to the Board. The consultant will be advising on such issues as safety and security, handicap accessibility per the Americans with Disabilities Act (ADA), trails standards, erosion, potential bridges, circulation, water quality, habitat restoration, slope and bank stabilization, site furniture, drainage, and other environmental concerns.

Timeline

The tentative timeline for the project is as follows:

- Nov – Dec 2010: CAC and STAC process is completed, with a recommended plan to the Board, design and engineering consultants hired, site engineering investigations completed.
- Winter 2010 – 11: Design and engineering.
- Spring 2011 - June 2012: Complete the lower trail portion and other activities that utilize the Park and Trail funding.
- Oct 2012 through 2013: Construct the on street bike trail with Transportation Enhancement and local match funds.

Funding

The project is funded by a variety of sources, including estimated amounts from:

- State Legacy Tax Parks & Trails Fund thru Met. Council 2010 \$600,000 (available now, must be spent by July, 2012, planning & engineering included in this fund)
- Federal Transportation Enhancement Act Funds (TEA) \$500,000 (available in Oct., 2012, needs a 20% match)
- Met Council Operations and Maintenance Funds TBD

Overall funding for full build out of this master planning process will be estimated as part of the final report.



Youth Active Sports Camps at Wirth Park

Session II: July 12-16

Session III: August 9-13

The City of Lakes Nordic Ski Foundation is holding active sports camps this summer for kids ages 9-13. Kids learn about an active lifestyle in a fun camp setting. Specifically, kids will experience the year-round athletic lifestyle of a cross country skier through a variety of outdoor activities and will learn the basics of training for aerobic sports, and cross country skiing in particular.

Five to seven kids are paired with an experienced counselor and the kids rotate through different stations each day. The kids will experience roller-skiing, mountain biking, hill bounding or pole hiking, orienteering or adventure racing, swimming, Ultimate Frisbee and other games, they will learn to wax skis – and generally have a great time learning some of the basic skills of a cross country skier.

The camps are based at the Wirth Beach Picnic Pavilion, but the activities will take place throughout Theodore Wirth Park. On the last day of the camp, the kids will complete an "adventure race" in which they will be challenged to navigate around Wirth Park with their teammates and counselors using all the skills they learned during the week.

Cost: \$170 (Need-based scholarships available. Contact Margaret Adelman at margaret@cityoflakesloppet.com or 612 604-5332 for more information.)

Note that the kids only need a decent pair of shoes. Mountain bikes, roller-skis, etc. are provided by the Nordic Ski Foundation.

iittala
Find it at FinnStyle

FinnStyle

160 Glenwood Ave.
Minneapolis, MN 55405
Ph. 612.333.3127

Store Hours
Mon - Sat: 10AM - 5PM
Sunday: Closed

www.FinnStyle.com



Youth & Schools



It was another stellar year on the boards of our neighborhood middle school. The battle of the cliques - jocks versus braniacs, was at the center of this year's musical at Anwatin Middle School. Complete with lunchroom and lockers, "High School Musical" tells the story of a girl at a new school who is a science and math wiz and her new friend, the captain of the basketball team. The two audition for the school play and cause a disruption to the status quo.



Despite any bias you may have about a play based on a Disney Channel original movie, this show is a charming story about accepting people's differences and not allowing yourself to be stereo-typed.

Local 8th grader, Mao Vang (Area 6) played the roles of jock and "skater" rebel. Many alums of past productions returned to help with the show. Grant Jolstad (Area 4) provided rehearsal assistance and ran the sound board. There were also many former cast and crew, in the audience, supporting the school.

This marks the 13th year that Project SUCCESS has partnered with Anwatin to produce a musical which is performed the first Friday and Saturday in June each year.

This play is more than the sum total of dancing, acting and amazing singing. It is an opportunity for these kids to take a chance and shine and to experience the satisfaction that comes with hard work and accomplishment.

- JoEllyn Jolstad, Area 4

Pre-Primary MPS At-Large School Board Candidate Forum

Wednesday, July 21, 2010
Ramsey Fine Arts School

1- West 49th Street - enter at door #1 on 50th street parking lot
6:30-8:30 pm - Q&A, moderated by the League of Women Voters
8:30-9:00 pm - meet and greet with the candidates

Hosted by the Kingfield and Lyndale Neighborhood Associations, Bryant Neighborhood Organization, League of Women Voters of Minneapolis, Southwest Journal and Minneapolis Public Schools Zone 3

Ten at-large candidates running for school board will be speaking to the public regarding their interests in running for the MPS School Board and their talents for serving in this challenging position. Candidates will all be invited to submit a written bio and answer two district-centric questions; to learn more about the candidates before the forum you can read this information at the Southwest Journal online beginning July 12. Alternatively you can pick up a hard copy at the Kingfield Farmers' Market on Sunday July 18, 8:30am - 1:30pm, 4310 Nicollet Avenue South.

Candidates will each be given time to answer a predetermined question to give attendees a chance to view their ability to prepare and

present their position on an issue publicly. During this section of the presentation questions will be collected from the audience and sorted by the League; the prevailing themes that emerge will determine which questions are directed to the candidates for the second hour of the forum. There will be a 30 minute meet and greet after the forum with the candidates.

This pre-primary forum is an important opportunity for citizens to gain knowledge on the candidates to assist with voting in the August 10 primary, where the pool will be narrowed from 10 candidates to 4.

If you have questions regarding the Minneapolis Public School At-Large School Board Candidate forum contact Sarah Linnes-Robinson, Director, Kingfield Neighborhood Association at Sarah@kingfield.org or 612-823-5980. Limited childcare is available: please reserve room for your child with Gael Ellis at gaelellis@comcast.net or 612-987-2344.

At-Large School Board Candidates
*phone numbers listed are from filing information available at:
www.ci.minneapolis.mn.us/elections/candidate-filings.asp

Doug Mann - 612-824-8800
R.E. (Dick) Velner - 612-339-5509
T. Williams - 612-522-4994
Steven C. Lasley - 612-588-0384
Mohamud Noor - 612-250-9660
Richard Mammen - 612-235-0981
Chanda Smith Baker - 763-227-3177
Rebecca Gagnon - 612-865-9465
Shirlynn LaChapelle - 612-382-0431
James Everett - 612-369-8283

School Committee News

On May 27, the school committee met with Board Director Pam Costain. She outlined the priorities for the Minneapolis Public Schools as high academic achievement, equity, and economic stability. It is the Board's goal to reduce the achievement gap between white students and students of color and to ensure that all students have rigorous programs and equal opportunities at their schools, no matter where they live. The board is working towards these priorities through the initiatives outlined in their strategic plan. Also included in the strategic plan are programs to ensure teacher quality and support principal leadership, both critical to the success of their goals.

Pam reflected on the Changing Schools Options process the district went through last summer and fall, and gave the school committee some strategies for moving forward. We really value the time she has spent with the School Committee and wish her well, as she is leaving the school board. Pam has taken a position as CEO of AchieveMpls, a private non-profit that supports the Minneapolis Public Schools.

School Board elections will be held this fall. (In Minneapolis, elected school board members are called Directors.) As there are nine candidates for the two at-large positions, a primary will be held on August 10. (See the June Bugle for a list of those running for the two positions). In the primary, voters may cast ballots for up to two candidates, and the top four vote-getters will go to the general election this fall. In the November 2 election, Bryn Mawr residents may vote for up to two candidates, and the top two vote-getters will be elected. Residents living in Park Board

Districts 1,3, and 5 will also chose board members representing their area. Bryn Mawr will elect area representatives in 2012. More info at www.ci.minneapolis.mn.us/elections or www.tcdailyplanet.net/2010-election-minneapolis-board-education

- Lynda Shabeen & Jessica Wiley,
Schools Committee Co-chairs

Minneapolis Parks and Recreation Board Programs

Kenwood Rec Center offers a variety of programs for adults and kids that are available to Bryn Mawr residents. In addition there will be some summer programming for kids in the park building in the Bryn Mawr Meadows near the playground. For more information, please call 370-4941 or www.minneapolisparcs.org.

WESAC Summer Soccer League and Camps

Registration for Summer Soccer closed Thursday, June 24th. Registrations will be accepted after June 24th, however, until the teams are filled and will include a \$20 late fee.

Registration is also being accepted for our NEW soccer camp! August 3rd through August 5th

For online registration or more information about the season including dates, fees, playing options and registration information please visit www.wesac.org

WESAC is the parks and recreation athletic league that serves Bryn Mawr children.

InnerCity Tennis is back at Bryn Mawr Meadows

The program runs through July 16 and is Monday to Friday 8:00-9:00 am for kids ages 6-11 and 9:00-10:00 for kids 12 and up. Cost is \$60 for the summer. www.innercitytennis.org or 824.6099

City of Minneapolis Curfews

Age	Sun-Thurs	Fri-Sat
Under 12	9:00 pm	10:00 pm
12-14	10:00 pm	11:00 pm
15-17	11:00 pm	12:00 pm



Graduations 2010

**Congratulations to all the Graduates and their families.
Good luck in the future as you pursue your dreams!**



Drew Anderson, Area 6

Drew is a 2010 graduate of South High School's Liberal Arts program. He is pursuing volunteer opportunities at national parks or the WWOOF organization (World Wide Opportunities on Organic Farms) before starting college. His mom is Deb Anderson.

Brandt Cassidy, Area 3

Brandt Cassidy, son of Patrick Cassidy and Naomi Chu, recently graduated in the class of 2010 from South High School. He is attending MCTC in the fall to complete his generals and then plans to transfer to another University. Brandt is currently looking for more work possibly in finance or banking and would appreciate any good connections.

Anna Dilliard, Area 5

Anna recently graduated from the International Baccalaureate Programme at Southwest High School, earning an IB Medallion for her academic and community service work. Most of that service was performed with a youth group associated with Bryn Mawr Presbyterian Church. Anna will be attending Luther College in Decorah, IA this fall where she plans to major in Psychology. She also hopes to continue her involvement in music.

Her parents, Marcus and Cynthia Dilliard report that Anna is looking forward to meeting new people and experiencing the independence of being a college freshman!



Avery Dorsett, Area 3

Avery Dorsett, son of Keith and Kim Dorsett of Area 3, graduated from South High School on June 7. In the fall, he will be attending Augsburg College, where he will be a member of the Auggie football team.



Leia Gravon, Area 4

Leia graduated from South High. She will be attending the University of Minnesota Duluth and currently has an interest in pursuing Glacial Geology with a minor in Spanish. While at South, Leia played on the soccer and rugby teams. She was active in the Silver Ribbon Campaign as well. Leia's mom is Beth Franzen of Area 4 and her dad is Don Gravon.



Jenna Hilden, Area 6

A graduate of Southwest High School's Arts & Humanities program, Jenna's focus has been on music. She was in choir and a member of the "Southwest Singers" as a junior and senior. She also continues to play the piano as well. Jenna plans to attend The Minneapolis Business College in the fall in the Medical Assistant program with possible plans of pediatric nursing down the road. Her parents are Gary Martin and Kari Hilden.

Bennett Hull, Area 2

Bennett Hull, son of Sandy Sweatt Hull and John Hull, graduated from Minnehaha Academy. Bennett lettered in cross country, hockey and was a pitcher and outfielder for the varsity baseball team. Bennett will be attending High Point University in High Point, North Carolina in the fall. He plans to major in Business Administration.



Lynsey Moseman, Area 6

Lynsey Moseman is graduating from Creative Arts High in St. Paul. She maintained a 4.0 grade average and was the Valedictorian of her class. She lives with her mom, Cheri, in Area 6.



Dylan Monson, Area 5

Dylan Monson graduated from South High School this June. He plans to take a year off and volunteer in a foreign country with a work away program before starting college with a focus on renewable energy. His parents are Joe and Liz Monson.

Aaron Pashibin, Area 6

Gary and Janet Pashibin's son, Aaron graduated from Southwest High School. He played football and rugby in high school, ran Grandma's half marathon twice and TC 10 mile once. Aaron enjoys hanging out with friends and his girlfriend. He will be going to MCTC in the fall.

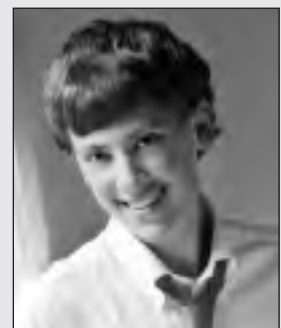
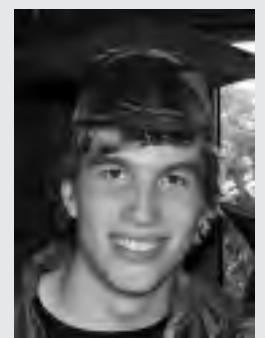


Samuel J. Peplin, Area 1

Mary and Bob Peplin are proud to announce that their son, Sam graduated with a Bachelor of Science degree in Systems Engineering Management from the United States Air Force Academy, located in Colorado Springs, CO, on May 26, 2010. Sam will be attending flight school starting in August 2010. he will be stationed at Vance AFB in Enid, OK.

Ian McCall Pengra, Area 3 & Area 7

Congratulations, Ian! Southwest High School Graduate 2010, son of Mike Pengra (Area 7) and Karen McCall (Area 3): "We are proud of you, Ian! From that very first step you took as a baby, to now...we are so happy that you are our son. We stand behind you and celebrate with you, all the steps you take in this big, beautiful, full-of-possibilities Life!"



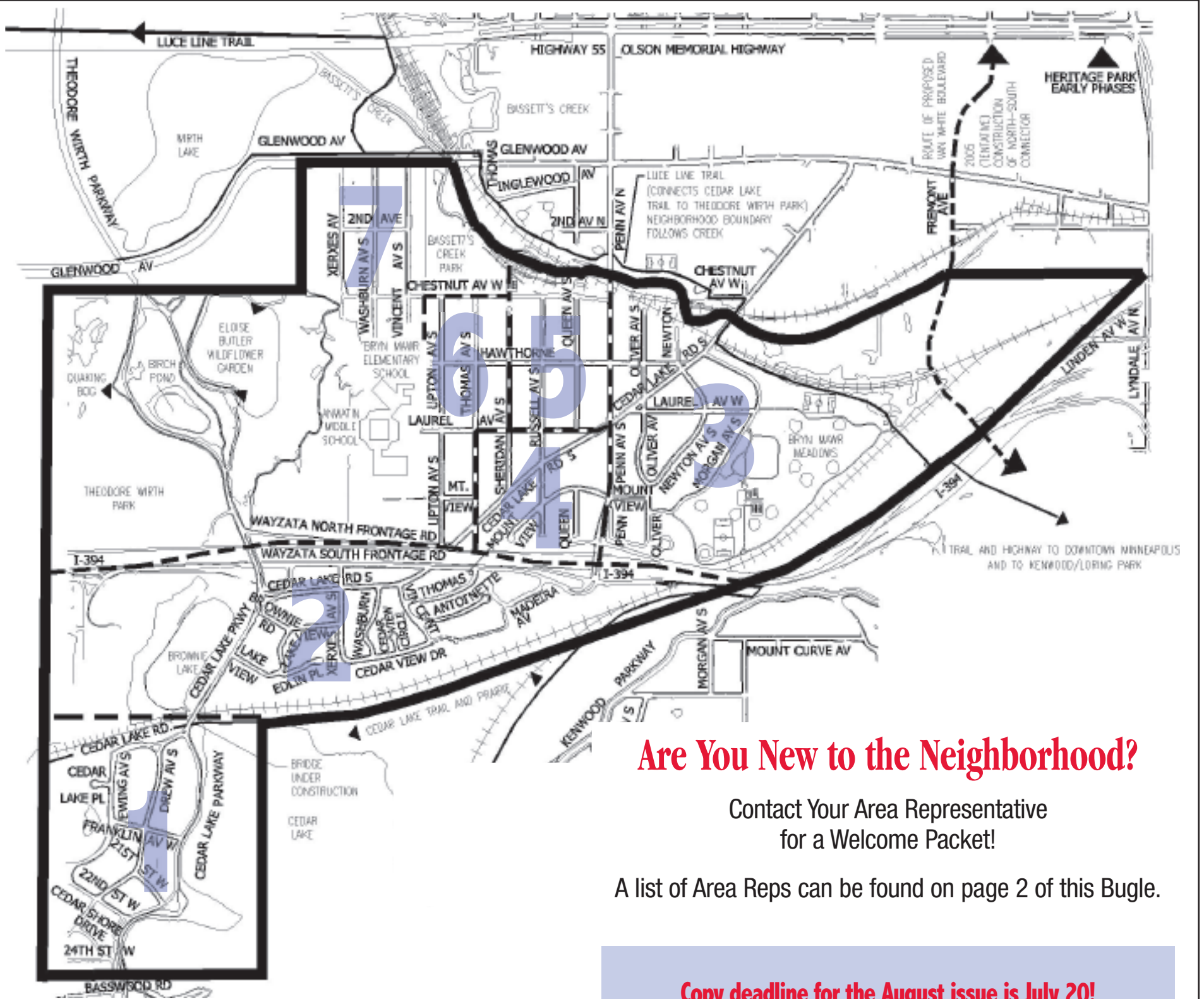
Eli Robiner, Area 2

Eli Robiner is a recent graduate of St. Louis Park Senior High School. He graduated with highest honors and is an IB Diploma Candidate and National Merit Commended Scholar. He was editor for school newspaper and member of the track team. In the fall he plans to attend Carlton College in Northfield. Eli is the son of Bill and Susan Robiner.

Ruby Josephine Smith, Area 3

Class of 2010, Southwest High School, Ruby graduated with High Honors and she is a Salutatorian. She is headed to Oberlin College in Ohio where she will continue studying choreography and photography among many other interests. Ruby was born in Bryn Mawr on April 26, 1992-- so she is a Bryn Mawr resident through and through! Her parents are Lauren Stringer and Matthew Smith.





Are You New to the Neighborhood?

Contact Your Area Representative
for a Welcome Packet!

A list of Area Reps can be found on page 2 of this Bugle.

Copy deadline for the August issue is July 20!

Display Ads are due July 20 Ads must be pre-paid & camera ready.
Call Deryck Jolstad at (612) 377-8968 or djolstad@msn.com for rates.