



# BRYN MAWR BUGLE

Published by the Bryn Mawr Neighborhood Association

March 2010



## It's been a long winter!

Thanks to Brenda Martinson of Area 7 and her daughter Macy for sharing their photos from an icicle hunt around Bryn Mawr.

## Q & A About Paving Project and Tax Assessment

**Bryn Mawr Community meeting on March 17, 7:00 p.m. in the Bryn Mawr School Cafeteria**

The streets in Bryn Mawr north of I-394 will be resurfaced this summer. Resurfacing consists of milling, or grinding off, existing pavement, and overlaying the street with a new layer of asphalt.

The city plans to levy a property assessment to help pay for a portion of this work. This assessment would be levied in 2011, with the work being performed this year. As a part of the assessment process, the City of Minneapolis will hold a public hearing at City Hall on March 23.

In advance of this public hearing, a city paving engineer and a representative of the assessor's office will meet with the neighborhood. The meeting at 7pm March 17 in the Bryn Mawr School cafeteria will be held to answer questions which may be a result of this work. A formal invitation will be mailed to all of the assessed property owners in their formal assessment notice.

### Contact Information about the project:

Larry Matsumoto, City of Mpls Paving Engineer:  
612-919-1148, [Larry.matsumoto@ci.minneapolis.mn.us](mailto:Larry.matsumoto@ci.minneapolis.mn.us)

Tracy Lindgren, Engineering Technician:  
612-290-5898, [Tracy.lindgren@ci.minneapolis.mn.us](mailto:Tracy.lindgren@ci.minneapolis.mn.us)

**SAVE THE DATE:  
BMNA Annual Meeting  
Wed., May 12, 2010**

## Board Positions up for Election This Year!

The BMNA by-laws state that, in even years, the following positions shall be elected: President, Secretary, and Co-Representatives for even-numbered Areas (2, 4, & 6).

All of these positions offer great opportunities to get to know many wonderful neighbors, to learn about the issues facing Bryn Mawr, and to have a voice in our neighborhood's response to those issues. The only requirements are a willingness to volunteer your time and effort, and to voice your opinions while keeping an open mind about what your neighbors have to say. (Well, and you have to actually be a member of the BMNA - but you can sign up right at the Annual Meeting, if you haven't already!)

Please contact Nominations Committee Chair Larry Skov, at 598-0753, if you are interested in volunteering for one of these positions! The full slate of candidates will be published in the April Bugle.

## BMNA Schools Committee to Host Informational Forum Tuesday March 23, 2010

ALL neighbors are invited to come and learn more about schools and choice options in Bryn Mawr

The Minneapolis Public Schools (MPS) are in the midst of implementing the Changing Schools Options plan, approved by the MPS Board in September 2009. The plan has impacted Bryn Mawr students and the neighborhood in a variety of ways. Parkview Montessori will be closed at the end of this school year. Beginning with sixth grade, Emerson Spanish immersion students will move to Anwatin next fall. High school students, while able to attend a

variety of schools, including Southwest High School, will also have bussing to Patrick Henry High School.

To better understand these changes, the BMNA Schools Committee will be holding an informational meeting on Tuesday, March 23 from 7:00 - 8:15 pm in the Bryn Mawr Elementary Cafeteria. Representatives of Minneapolis Public Schools, including CSO Liaison Courtney Cushing-Kiernat and Area superintendent Willie Fort will give an overview of the



changes and answer questions from those in attendance.

This information meeting is sponsored by the BMNA schools committee. For more information contact co-chairs Lynda Shaheen [Lynda\\_shaheen@yahoo.com](mailto:Lynda_shaheen@yahoo.com) or Jessica Wiley [Jesswiley@comcast.net](mailto:Jesswiley@comcast.net).

## Coming in the April Bugle:

**Bryn Mawr Festival of Garage Sales Registration**  
Garage Sale Weekend is May 1-2. Get on the Map!

# BMNA Reporter

BMNA Minutes  
February 10, 2010

Present: Marlin Possehl, President; Ben Horn, Co-Treasurer, Adam Maki, Co-Treasurer; Greg Froehle, Area 1; Lynda Shaheen; Area 2; Jessica Wiley, Area 3; Rick Carter, Area 3; Chris Etz, Area 4; Dave Logsdon, Area 5; Jay Peterson, Area 6; Barry Shade, Area 6; Andrew Kraling, Area 7; Steve Harvey, Area 7; JoEllyn Jolstad, Bugle editor/Community Schools Liaison; Scott McLaughlin, NRP chair, Patty Wycoff, Neighborhood Coordinator,

Guests in attendance: George Seebach, Area 2; Jeanne Carter, Area 3; Vida Ditter, Area 6; Lisa Goodman, City Council Rep; Dylan Thomas, Southwest Journal

## Call to order and introductions

The meeting was called to order at 7:04 in the Bryn Mawr Elementary Media Center. A quorum was present. Introductions made.

## Approval of consent

Approved with additions to the agenda, Moved by Rick, second by Chris.

## City Updates- City Council-Member Lisa Goodman

- Lunch with Lisa topic on February 24 will be the Curry Avenue partnership to work on homelessness.  
- City assessor reminds us that home evaluations are out. Questions should be raised now if you have a

question about the evaluation of your home.  
- There are now parking restrictions on the even sides of residential streets for the rest of the winter. This is the first time in 9 years that this has been invoked.  
- City will be gathering input for light rail stations' planning; pulling together station area planning committees with representatives from the neighborhood.

## Neighborhood Coordinator Update-Patty Wycoff

- New welcome packets are ready; call Patty for copies. She will bring them to each meeting.  
- Membership envelopes are coming in.  
- March 17 there will be a meeting in at the school about street repaving and tax assessments.  
- Garden tour is scheduled to be in Bryn Mawr this year but problems with the church renovations may affect parking.

## NRP Report-Scott McLaughlin

The city has extended the date for expending NRP dollars. The goal is to have all dollars encumbered by the end of this year. Scott generated a status report that will be distributed monthly. He will email it to board members. Balance is at \$139,013. Dollars could be used for ash borer project. Scott is looking for board members to drive the initiatives, especially parks and housing. Rick and Andrew agreed to work on the housing initiative. Discussed how parks dollars were used in the past such as repairing the blow out area on Bassetts Creek. Area 1 has an issue with the beach parking lot, transportation conflicts,

lack of curb cuts that could be addressed.

## BMNA Event Calendar

Approve 2010 calendar of events-moved by Jay, second by Barry.

## Update on BMNA Community (formally Capital) Projects

- Downtown kiosk project-no news
- Ash Borer project- volunteers looked at 918 addresses and identified 853 ash trees, half on boulevard, 712 medium or large. The committee distributed packets with information about ash trees and the ash borer to 44 of the properties with ash trees on them. They ran out but plan to distribute packets to the rest in the spring.
- New proposals-Rick reported that the committee is accepting new ideas. Committee will make recommendation at March 10 meeting.

## Committee Reports

- Land Use-**  
- Setback variance-no objections to set back for property on Washburn.  
- Rezoning 2006 Laurel-Rick and Jeanne Carter were present to discuss their efforts to rezone 2006 Laurel as a multiple dwelling with plans to turn the property into a bed and breakfast. Encouraged by land use committee to apply for local historic designation. Going to city planning commission in March. Rick recused himself from Board voting and left the room for the discussion. Moved by Dave, second by Steve to accept land use committee report. Moved by Jessica, second by JoEllyn to submit BMNA board letter to the senior city planner supporting 2006 Laurel rezoning from R1 to R3 as recommended by land use committee. Discussed letter. Steve raised the question as to whether this fits with our process. Clarified that the board is not supporting a variance from a rule, but supporting changing the rule. The board discussed the importance of saving an historic property. Letter approved 5/4.

- Traffic-no report**
- Parks and Rec-no report**
- Schools Committee-Lynda Shaheen**  
- Committee met on January 25.

- Planning an informational meeting for March 23. Two representatives from the district, Willie Fort and Courtney Kiernat, will attend and describe the changes that have impacted Bryn Mawr. Suggestions for invitations to the meeting were given, including IB representative from Anwatin and PTA representatives.  
- Approval of school committee leadership structure. Proposed that the committee be composed of two members from each area with no at-large committee members. Moved by Rick second by Scott.  
- February 27—"Bail out the Band" event at Lee's Liquor Lounge.

- Bugle Report —written report given.** \$320 worth of donated space in February.
- BFR-no report**

## Treasurers Report/Budget presentation

Income exceeded expenses by \$11,000 for 2009. Bugle revenue was \$14,788; expenses \$17,298.

2010 budget —used 2009 numbers. Membership drive is in full swing; to date we have raised between \$8000 and \$9000. Approximately 200 households have donated, with 20 being new members. Area reps asked to get a list of non-member neighbors. The treasurers' report will be moved to the top of the agenda for next month.

## Reports from BMNA Reps to Affiliated groups-

BCV-ROC— no report  
SWLRT-no report  
Cedar Lake Parks-no report

## Discussion Items and Announcements

Announcements about the redistricting committee and Juneteenth celebration were deferred to March meeting.

Adjourned at 8: 50 PM

*Submitted by Jessica Wiley, interim secretary.*

**2nd Friday - every month**  
Enjoy delicious STEAK DINNER at Golden Valley LEGION, & dance to...

**Percolators!**  
LIVE Band! Good-time rock, pretty ballads, country favorites, requests.

For only \$9.<sup>00</sup> you get:  
• Tasty char-grilled ball-tip sirloin  
• Crisp salad bar, roll & butter  
• Baked potato with the works  
No cover - smoke-free - open to public  
Steak: 6-8, Music: 7:30-11:30  
Legion phone: (763) 377-4252

**FREE DRINK if you come in wearing a BIKE HELMET!**

Hans Gasterland (Area 7) 612-377-6666  
www.percolatorsband.com

**www.EricMannOnline.com**

RAPID PRE-APPROVAL  
AUTOMATED UNDERWRITING  
GREAT SERVICE (REFERENCES AVAILABLE)  
FAIR AND COMPETITIVE PRICING

**Eric Mann**  
Mortgage Loan Officer  
(612) 481-2839

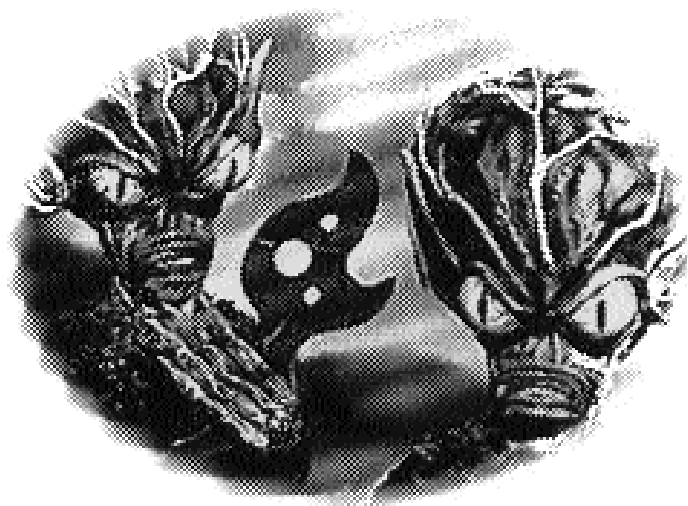
bank Home Mortgage  
Homebuyer  
PRE-APPROVAL SEMINAR  
**Today**  
Call (612) 481-2839

**Need New Customers?**

**Get More People to Flock to Your Web Site.**  
Customized Search Engine Optimization (SEO) Solutions to increase the traffic to your website.

Phone: 612.605.3966  
E-Mail: sandy@sandyhull.com

**SANDY HULL & ASSOCIATES, LLC**  
SEARCH INSPIRE OPTIMIZATION & MARKETING




If Martians landed in  
Bryn Mawr, I'm sure  
they'd say, "Take us  
to your Kalitowski."

**Jim Kalitowski**  
**REALTOR**

He's been around your block.

**612-867-6703**  
**jimkalitowski@remax.net**




**Recycling**  
www.ci.minneapolis.mn.us  
/solid-waste  
(612) 673-2917

**Bryn Mawr Recycling Schedule**

	Monday	Tuesday
Area 1	March 8 March 22	
Areas 4W, 5W, 6, 7	March 1 March 15 March 29	
Areas 2, 3, 4E, 5E		March 2 March 16 March 30

Use it up, wear it out, make it do, do without. Recycle.



**MILL CITY DENTAL**  
JAY WILLIAMS, D.D.S.

612-377-3740

2218 LAUREL AVENUE • MINNEAPOLIS, MN 55405



*I Do Home Delivery*  
Consider me your Jeeves of real estate

Here to serve.  
Here to deliver.

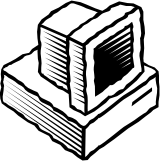
with Service,  
Integrity, and  
Positive Attitude

Let me know if I can  
assist you, your friends,  
or your family with  
selling or purchasing  
a home.



Wm. Curt MacKenzie  
BRYN MAWR RESIDENT  
612.875.9220  
curt@curtmackenzie.com  
www.curtmackenzie.com





# From the Editor

I am an Olympics junkie. It doesn't matter if it is summer or winter, I am absolutely hooked on any coverage, results, or hype I can get a hold of. And each time they roll around, I get hooked on watching a new sport.

I have always loved hockey and figure skating, but I remember "discovering" bobsled and snowboard halfpipe. I am not sure I am ready for ski-cross. But, this year I have a new passion for nordic skiers.

I have skied cross county since I was a young child and have always enjoyed participating. When the students at Bryn Mawr School go out with the City of Lakes Nordic Ski Foundation in preparation for the Loppet, I often tag along.

As a youngster, I never knew anyone else who skied cross country and vividly remember hilarious nighttime skis through cornfields with rookies. I never imagined that there are people who train or compete with passionate intensity.

Maybe it is the fact that I am now old enough to be the mother of many of the athletes and beyond the age where I could ever hope to achieve that level of athleticism, that evokes such admiration.

I am reminded of the P & G television commercial showing small children in glorious Olympic moments. The tag line is "To their moms, they will always be kids."

Well I am and I know many of those moms. OK, none of our kids are medal-ready, but it is hard to believe how many city kids are involved with cross country skiing.

After five years, the "Bryn Mawr Skis" kids from the elementary school have developed quite a core of accomplished skiers. They will go on to the Anwatin race team and possibly to the very successful Southwest HS Nordic Ski team. SWHS is where former Bryn Mawr/Anwatin student Mina Krenz earned a place at the State meet this year. SWHS is also where former Bryn Mawr/Anwatin student, Eric Carter made us all proud. He then went on to four years as an athlete/scholar on the University of Vermont Nordic team and he is now in grad school in Vancouver where he played a role in preparing the Canadian Olympic Nordic skiers for their impressive showing this week.

I recently received a notice about a press conference regarding the proposed olympic training facility for nordic skiing in Wirth Park. Setting aside how people may feel about the Loppet, Governor Pawlenty, and government spending, I have to marvel that this area is becoming such a center for excellence in this sport. I have a feeling the kids of Bryn Mawr will be part of a bright future for Nordic sports.

-JoEllyn Jolstad, bugle@bmna.org

# NORTH END HARDWARE



**EXCEPTIONAL SERVICE**

**Winter is here!**

**Bring your snow blower in for a tune-up before the snow hits.**

**Pick up and delivery available. Give us a call.**



TORO • SNAPPER • LAWN BOY  
SNOW BLOWER / LAWN MOWER SALES & SERVICE

NORTH END HARDWARE & RENTAL  
at PENN & LOWRY  
Darryl Weivoda, Owner  
(612) 529-9151    Northendhdwr@aol.com

# more CounterTalk

by Dave Logsdon



"Memory is a diary that we carry with us"

-Oscar Wilde-

As winter drones on here on the frozen tundra, inevitably, our thoughts turn to spring. The birds, the flowers, the 20 minute bike ride to the new ballpark! Like Lindsey Vonn, I am ready to go for the gold!

## We're all Nimbys on this Bus

We don't want this thing built here! The angry citizen cries, "Not in my backyard!" Most of the time, projects that produce wonderfully beneficial entities for the greater good of societies often times infringe upon somebody's quality of life. Highway 12 and the morphing of highway 12 into 394 did a lot to bring this neighborhood together, though at the time it totally split us. If you live a block from the bus line you feel differently about increased bus service than the person whose house vibrates every time a bus goes by. I hate it when I can't park in front of my own house to unload groceries because people are getting their hair done or having a filling replaced at our downtown establishments. Yet I do appreciate being able to scoot to the Market or Cuppa Java for something on a moments notice. Living in the city is often a trade off. It's a lot easier to like the idea of Light Rail when it's running 20 feet outside of someone else's door, but there it are times that "stuff" happens and you happen to be in the way. Someone always has to make a tough decision. Those are the

times, be thankful you are not a politician!

## We get letters...

If there is one thing I can't stand, it's apathy! That's why letters, even those that do not agree with my opinion, are a good thing. The people's dialogue is a healthy thing. In last month's Bugle there was a letter from three citizens expressing concern about a blurb I blurbd in my December column about maybe helping out a specific homeless solicitor who had a particularly bad 2009. They expressed that by giving these freeway solicitors money we are encouraging their continued presence. While I agree in principal, I guess I just wanted to make an exception with this dude. You all are going to do what your heart tells you what to do, I'm just writing about what this misguided bleeding heart columnist is going to do.

## Double, double toil and...

The Guthrie Theatre is staging William Shakespeare's MacBeth and I had the opportunity to view it recently. Bryn Mawr's own leading thespian, Isabel Monk-O'Connor plays the part of one of the three

witches. I could say something about "type casting", but I'm too much of a gentleman and besides she might hit me with her walking stick!

Umbrella Bed, who have played at our Ice Cream Social, makes yet another European tour in April. Our neighbor Dave (Hellcat) tells me what I have also heard from others that have played in Europe that it is so much fun to play there because the people and the club owners treat musicians much better than they do here. That may be a generalization, but I have heard the same thing from a variety of sources. Being the yellow journalist that I am, I am not adverse to generalities!

I got my foot in the door! Let's see, Van Gogh, Picasso, Gauguin, and Logsdon now showing at the Minneapolis Institute of Art! (one of these things is not like the other....) The Foot in the Door exhibit, now running until June has given me the opportunity (along with 5,000 other artists!) to display a piece of art. Many Bryn Mawr artists were on display, including Jason Lindberg and his dad Steve, Steve Jensen, myself and I'm sure many that I haven't tracked down. On the MIA website there is a short video introducing the artists in very short bursts. Steve Lindberg tagged "Bryn Mawr" in his blurb, Steve Jensen got to say he was from south Minneapolis, and yours truly mentioned that he was an "outsider folk artist". A statement that, I might add, put

me in the company of probably 4,000 other artists in the exhibition (very unique.)

## and more ramblings...

As I approach my Medicare birthday in March, I have a growing appreciation for the practitioners of various types of massage. My daughter, Adrienne, who works out of a space by Aveda on Central Avenue helped me get rid of a bad case of sciatica a couple of years ago so I appreciate what a good shiatsu can do. We have a couple of very good shiatsu message people right here in our neighborhood! They are moving from their former space upstairs from the Bryn Mawr Pizza to the vacated Travel About space next to the deli. In April, they hope to have yoga classes in the basement! (downward facing old dog)

Somehow the Bryn Mawr Market has survived another winter, but they still need your support! They are selling Earthbound organic greens and Cedar-Summit Farms milk, so there is a lot more to choose from, along with all the normal emergency supplies.

Remember, the HOUR CAR half priced introductory offer expires at the end of March!

Well, that should about wrap it up for another edition of "As the Ego Turns". I have to go now and get ready for the GARAGE SALE WEEK-END on the first week of May! Yahoo!

**Milda's  
Cafe**

**HOURS:**  
Mon.-Fri. 6:00 a.m.-3:00 p.m.  
Closed Saturday & Sunday  
Pasty Served Mon./Wed./Fri.

1720 Glenwood Ave. N. • Minneapolis. **612-377-9460**



**PROVIDING HOLISTIC REHABILITATION SERVICES**

**IN THE WESTERN TWIN CITIES WITH TWO LOCATIONS**

**BRYN MAWR 2600 Wayzata Blvd, Minneapolis, MN 55416**

**MINNETONKA 15000 Minnetonka Blvd, Minnetonka, MN 55345**

**Call today to schedule an appointment (952) 935-4037**

**www.merzphysicaltherapy.com**

## WEEKLY MEETINGS OF ALCOHOLICS ANONYMOUS

are held at Bryn Mawr  
Presbyterian Church,  
Cedar Lake Road and  
Laurel Avenue, on  
Tuesdays at 7:30 p.m.

All interested people are  
invited to attend.

Sunday	Monday	Tuesday	Wednesday	Thursday	Friday	Saturday
	<b>1</b>	BMNA Budget and Fundraising Meeting at Bryn Mawr School in Rm. 136 at 7pm <b>2</b>	Land Use Meeting at Bryn Mawr School in Rm. at 7 pm <b>3</b>	<b>4</b>	<b>5</b>	<b>6</b>
<b>7</b>	<b>8</b>	<b>9</b>	BMNA Monthly Meeting at Bryn Mawr School in the cafeteria at 7pm. <b>10</b>	<b>11</b>	<b>12</b>	<b>13</b>
<b>14</b>	<b>15</b>	Bassett Creek Valley Redevelopment Oversight Committee (ROC) Meeting, 6:00 PM, Harrison Community Center <b>16</b>	Community meeting about street paving project & assessment, 7:00 p.m. in the Bryn Mawr School Cafeteria <b>17</b>	<b>18</b>	Bryn Mawr Elementary “Family Fun Night” School Carnival, 5:30-8pm <b>19</b>	<b>20</b>
<b>21</b>	<b>22</b>	Neighborhood meeting with Minneapolis Public Schools Representatives, regarding school changes affecting Bryn Mawr and Harrison <b>23</b>	<b>24</b>	Lunch with Lisa Goodman at St. Thomas at noon. 10th and LaSalle, RM 257 \$10/person, <b>25</b>	<b>26</b>	<b>27</b>
<b>28</b>	<b>29</b>	<b>30</b>	<b>31</b>			
	Minneapolis Public Schools Spring Break: March 29 - April 2 No Meetings at Bryn Mawr/Anwatin					

# City Council to Vote on Plan for Development of Linden Yards

The Minneapolis City Council will be considering Bassett Creek Valley redevelopment issues in late March. Planning efforts in the last ten years have focused on redeveloping the Valley into a higher density, mixed use area beginning with City owned land currently used for public works operations including outdoor storage, concrete crushing, and the impound lot.

It appears that the Southwest Light Rail Corridor will follow the Kennilworth alignment and provide for an LRT station at Van White Boulevard. Therefore, transit oriented development is recommended for Linden Yards, a former rail yard that is currently used for outdoor storage and the concrete crushing operation.

Ryan Companies was granted development rights conditionally in November 2008, but the City Council wanted more research done regarding relocation costs, market value of the property, and other issues, before finalizing. These reports will also be presented to the Council in March. Economic conditions have been poor in the past year, but Ryan Companies remains interested in the area and will work to recruit a major corporate tenant to occupy one or more buildings for a corporate campus. Devel-

opment of Phase 1, Linden Yards (West of Van White), is expected to take 8-10 years to fully develop. Phase 2 is Linden Yards East and Phase 3 is the Impound Lot which will be redeveloped later.

Hennepin County is currently conducting a study related to the capacity and feasibility of extending more rail lines into an intermodal transit station in downtown Minneapolis. This major station, now termed the "Interchange" will be located near Target Field. The study includes potential locations and acreage required for a commuter rail layover facility which will be used to store the rail cars while commuters are working in downtown. This rail storage must be near the existing BNSF main line, the intermodal station and work operationally. The storage sites now under technical review include the eastern portion of Linden Yards, the Cedar Lake rail yard, and areas near the Federal Reserve and south of Target Field in downtown Minneapolis. The Interchange study should be completed in May or June.

The City Council will be asked to recommend granting Ryan Companies exclusive development rights on Linden Yards West through 2015 and also noting that if Linden Yards East

is selected as a preferred rail storage site, that city and county staff should develop a joint strategy to maximize development there. Hennepin County officials have expressed support for this approach to provide for development above and adjacent to any future rail facility.

The Bassett Creek Valley Redevelopment Oversight Committee (ROC) has been very involved throughout the process. ROC members attended a public meeting on Jan 7 held at the Harrison Community Center. In February, a ROC subcommittee, including Vida Ditter and Kay Qualley, intensively studied the research work over a series of four meetings. Hennepin County Commissioner Peter MacLaughlin and County consultant Ed Hunter met with the ROC at their regularly monthly meeting Feb 16. Also at that meeting the ROC approved a series of recommendations that will be submitted to city council members in coming weeks.

- Beth Grosen

Beth Grosen from the City of Minneapolis' Community Planning and Economic Development Department will be on the agenda of the March 10 BMNA Board meeting. Neighbors who want to learn more about the proposed recommendations are encouraged to attend.

## 2010 BMNA Calendar

At the February 10th meeting, the BMNA Board adopted the 2010 calendar of annual events.

**Festival of Garage Sales**  
Sat/Sun, May 1-2

**Annual Meeting & Board Elections**  
Wednesday, May 12

**Juneteenth**  
Saturday, June 19

**Ice Cream Scoop-Off**  
Tuesday, July 20

**National Night Out**  
Tuesday, August 5

**Harvest Dinner**  
Wednesday, October 27

**Saturnalia**  
Saturday, December 11

## SUPPORT THE BMNA!

NEW RATES FOR 2010,  
still some of the cheapest rates around!

*Why don't you advertise in the Bugle?!!*

Display Ad Rates	Page Size	Residents	Non Residents
Full Page .....	10"w X 16"h	.....\$260	.....\$300
Half page, horizontal ....	10"w X 7 7/8"h	....\$135	.....\$155
Half page, vertical .....	4 7/8"w X 16"h	....\$135	.....\$155
Quarter page, horizontal ..	10"w X 3 7/8"h	.....\$70	.....\$80
Quarter page, vertical ...	4 7/8"w X 7 7/8"h	...\$70	.....\$80
Quarter page, 3-column ..	7 3/8"w X 5.25"h	....\$70	.....\$80
Quarter page, 1-column ..	2 3/8"w X 16"h	....\$70	.....\$80
3-column, 1/4 high .....	7 3/8"w X 3 7/8"h	...\$50	.....\$65
Sixth-page vertical .....	4 7/8 x 6 3/8	.....\$50	.....\$65
Eighth page, horizontal ..	4 7/8"w X 3 7/8"h	...\$35	.....\$45
Business Card, horizontal .	4 7/8"w X 2 3/8"h	...\$25	.....\$30
Business Card, vertical ...	2 3/8"w X 3 7/8"h	...\$25	.....\$30
Inserts .....	8.5"w X 11"h	.....\$145	.....\$170

(Inserts must be printed by you, double or single-sided.)

**Color Now Available!**

\$60 each color

Does not include ad placement fee. Some production costs may apply.

**Full-Color Also Available!**

Call for Details.

Ads are due the 20th of each month and should be camera-ready and paid in advance.

For more information contact Deryck (377-8968) [djolstad@msn.com](mailto:djolstad@msn.com)

For classified ads contact Carolyn Bastick (377-8457) [CJ0159@aol.com](mailto:CJ0159@aol.com)

Thank you to Bryn Mawr Coffee and Cuppa Java for the \$1 coupon on the back of the membership letter!

### Bryn Mawr Neighborhood Association Membership - 2010

✂ Name(s): \_\_\_\_\_

Area (circle one)      1      2      3      4      5      6      7

Phone: \_\_\_\_\_

Address: \_\_\_\_\_

Minneapolis, MN    Zip Code: \_\_\_\_\_

E-mail: \_\_\_\_\_

Help us save postage by including your email address – we'll send your receipt to your inbox. If you don't have an email account, no problem, we'll still promptly mail your receipt. . Check should be made payable to BMNA, For security please do not leave memberships at the Market.

The BMNA does not charge dues. Please consider making a financial contribution of \$35 or more along with your membership.

**Yes, I want to help the BMNA by making a financial contribution of:**

\_\_\_ \$35 \_\_\_ \$50 \_\_\_ \$100 \_\_\_ Other

We also count on contributions of time.

**Please contact me about volunteer opportunities:**

\_\_\_ distribute the Bugle to neighbors    \_\_\_ volunteer in other ways

**Please mail to:**

Bryn Mawr Neighborhood Association  
P.O. Box 16437.  
Minneapolis, MN 55416-0437

# View From the Bridge



**Snowflakes**  
**March 2010**

“To see a world in a grain of sand,  
And a heaven in a wild flower,  
Hold infinity in the palm of your hand,  
And eternity in an hour.”

- William Blake  
from *Auguries of Innocence*

Most everyone knows that snowflakes are unique and have six sides. There is an infinite amount of variety to observe in snowflakes that one might catch in a gloved hand. While the winter may grow tired after several months, one would do well to recall the magic of the first snow of the season.

This winter’s snow certainly has made news nationally. At the time of this writing, 49 of our 50 states reported snow. Record snows closed the nation’s capital as well as other Mid-Atlantic cities. Minneapolis declared a winter parking ban for even sides of non-snow-emergency streets for the rest of the winter or until the snow melts. (Isn’t that the same?)

The winter of 2009-2010 has been marked by a fairly long period of time with snow on the ground. For nature and for our homes, snow offers an insulating layer. In fact when the snow cover is deep and consistent as this winter, the snow prevents frost from penetrating very deeply underground. The recent appearance of icicles and the more subtle roof dams remind us that there are drawbacks to such persistent deep snow.

Listening to a National/Minnesota Public Radio story entitled “Snowflake Safari”, I learned that for one to study snowflakes, it merely requires a hand lens capable of discerning the seated President Lincoln on the back of a penny. If you are like me, you probably are thinking, Lincoln is portrayed only on the front of a penny, right? The next time you hold a penny, that sometimes scorned piece of change, look at the center of the Lincoln Memorial, sculpted on the back of a penny. Yes, there ensconced within the columns of the memorial, is an image of the seated Lincoln statue. Now, back to the study of snowflakes....

Snow begins its life in clouds made up of countless microscopic water droplets. These clouds also contain dust or salt particles that collect water molecules. This collection of water molecules about a particle of dust or salt is known as nucleation. At temperatures of 32 to -39 degrees Fahrenheit, water molecules gathered on particles freeze and form ice crystals – the beginning of snowflakes.

The basic shape of snowflakes has its roots in the shape of a water

molecule. An Oxygen atom and its pair of Hydrogen atoms has a form that, when forming ice crystals with other water molecules, leads to a basic hexagonal shape – the six-sided hexagon. This shape may grow outward from its “top” and “bottom” to form columns or outward from its six “points” to form larger hexagonal plates or it may take on the form of the star-shaped snowflake we commonly envision.

The shape of these growing crystals will vary according to conditions of temperature and humidity. One snowstorm may produce a number of different shapes as the storm progresses. A simple hexagonal plate crystal may float or fall through different conditions of temperature and humidity. Arms may sprout; and miniature plate crystals may form on the ends or sides of these arms. This pattern may be repeated numerous times before the snowflake falls to earth. This complex history leads, in turn, to complex shapes. Since each arm experiences the same conditions simultaneously, each arm is nearly identical to its five neighbors. Since the path of no snowflake is exactly the same as another snowflake, the chances that there will be two identical snowflakes are very small indeed, though technically possible.

How does snow differ from other forms of frozen precipitation? Other frozen precipitation includes sleet and hail. Sleet starts falling as rain, then freezes into solid raindrops by passing through very cold layers of air. Hail starts as sleet but is blown back into clouds where it picks up a coating of water. Alternating periods of falling, freezing and water coating builds up layers of ice until the hailstone is so large that it falls to earth.

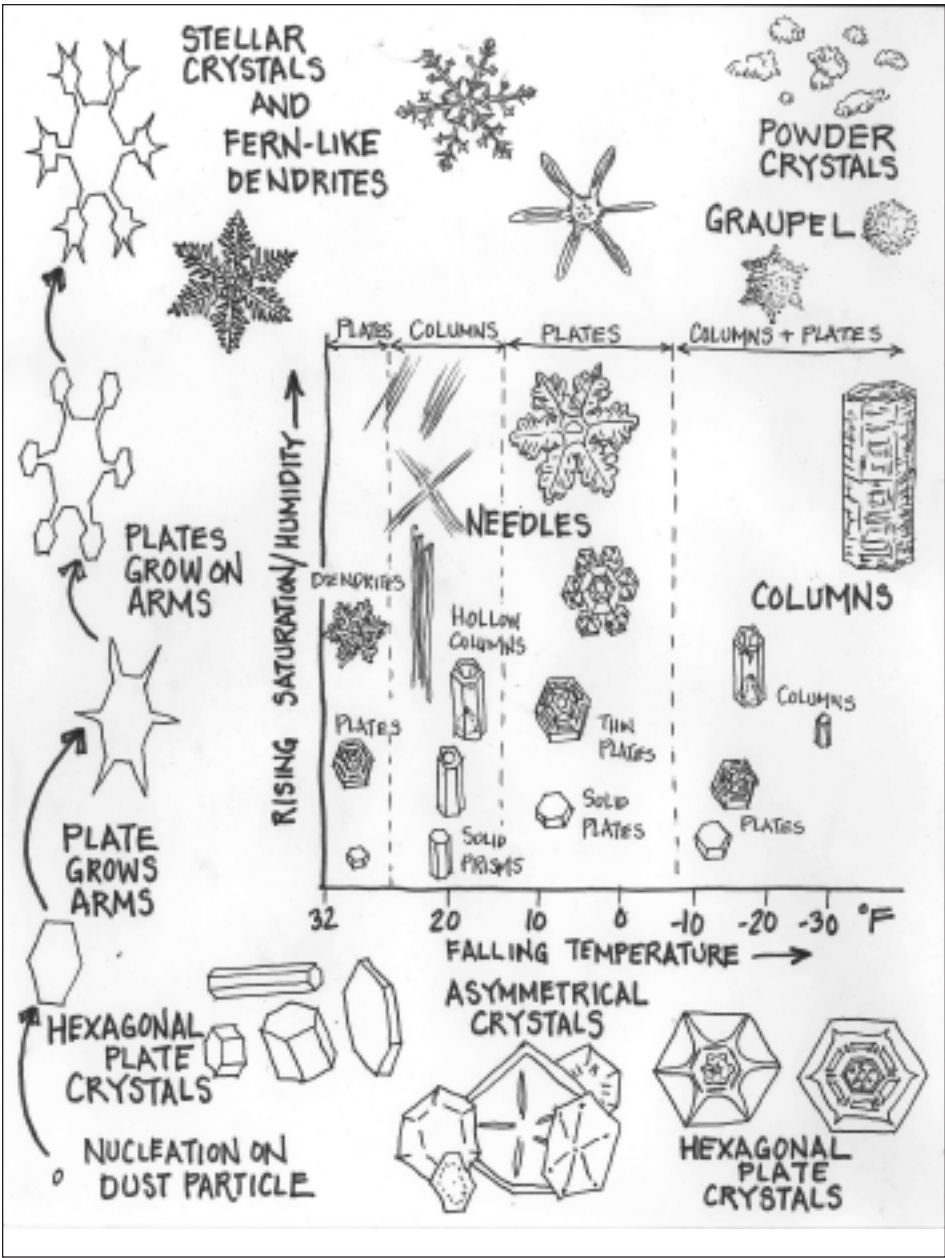
If snow consists of ice crystals of colorless water, why is snow white? Up close, individual snowflakes may appear nearly clear, like glass. However, a snowflake and a drift of snow will reflect light in an imperfect way. The crystals partially reflect light and partially refract light. The interactions of their optics leads to crystals and accumulations that appear white.

Though experts classify as many as thirty-six or forty-five different types of snowflakes, seven basic shapes or combinations of these shapes may be used to describe the snowflakes one may observe:

- Hexagonal plate crystal
- Stellar crystal or Dendrite
- Column crystal
- Needle crystal
- Asymmetrical crystal
- Grouped
- Powder snow

### Hexagonal Plate Crystal

A small proportion of all snowflakes are hexagonal plate crystals – six-sided, flat crystals about 3/32” to 3/16” in diameter.



### Stellar Crystal or Dendrite

Stellar Crystal is the snowflake shape that most easily comes to mind; though Stellar Crystals make up only a small percentage of snowflakes. These star-shaped snowflakes have six points and can be as much as 2” in diameter. The name Dendrite refers to snowflakes with arms that resemble miniature fern fronds. Branches grow quite a few side branches; and the star-shaped crystal takes on a more intricate shape that resembles fern fronds or other plants. Because of their arm extensions, these snowflakes interlock into conglomerate flakes, sometimes as much as 2” across. Drifting slowly down, Stellar Crystals create a peaceful ambiance. Because they hold together well, these flakes build up easily atop tree branches. Stellar Crystals form in low clouds with plenty of moisture and moderate temperatures.

### Column Crystal

Not a common crystal, the Column Crystal is a small six-sided column with either flat or pointed ends. Column crystals may grow to be 2” long. Column Crystals form in very cold clouds with little moisture in extremely high clouds, wispy clouds. Such cirrus clouds can be made almost entirely of these types of crystals. Passing in front of the moon these clouds of ice crystals may form a colorful halo.

### Needle Crystal

Only about 1/8” to 3/8” long, Needle Crystals are long slender six-sided columns with fine points at either end. If you’ve ever noticed snow that falls as thin white hairs on your coat sleeve, you’ve observed Needle Crystals. Very common, these can form most of a storm’s snowfall.

Though these can freeze together into slow falling conglomerate flakes, these flakes break apart when landing on hard surfaces

### Asymmetrical Crystal

Asymmetrical Crystals are plate-like crystals joined together in irregular shapes. This common snowflake is about 3/8” in diameter.

### Graupel

Graupel are small pellets, small hexagonal plate or stellar crystals that become coated with frozen water droplets as they fall through clouds. Graupel fall in short bursts and bounce off hard surfaces.

### Powder Crystal

Powder Crystals are actually small columns and plates connected to each other. Their minute granules are highly favored by skiers since this snow stays loose and does not easily pack.

Combination Crystals are made of conglomerations of one or more of the types of snowflakes described above.

### Sources, including source material from which illustration is produced

<http://www.its.caltech.edu/~atomic/snowcrystals/class/class.htm>;  
SnowCrystals.com was created by Kenneth G. Libbrecht, Caltech  
*A Guide to Nature in Winter*, Stokes Nature Guides, Donald W. Stokes, Little, Brown, 1976  
“Snowflake Safari”

Look up to appreciate the variety of snowflakes...it will be worth your effort!

- Greg Lecker, Area 3  
U of M Extension Service Master Gardener, Minnesota Master Naturalist Volunteer

# Preparing for Year Two of Emerald Ash Borer in Minnesota

Last spring the Emerald Ash Borer beetle was found on trees in a St. Paul neighborhood in close proximity to Minneapolis. Later a few more ash trees were found infested with the beetle near the St Paul Campus of the University of Minnesota. For several years, it had been anticipated and feared that this foreign pest, deadly to our native ash trees, would make its way into our state. Native ash trees had already been decimated in Michigan, Ohio and Ontario, Canada. The state of Wisconsin had spotty occurrences, so further westward spread was foreseen. On May 14, 2009, infected trees were discovered in Minnesota, which was certainly sooner than had been hoped.

It is sometimes hard to believe anything living can make it through Minnesota's harsh winters, let alone a small (1/2 inch) green metallic beetle that is not native either to Minnesota or to the United States. Nevertheless, survive it does in its dormant state, to later hatch out into its destructive larval stage in spring. It is at this "worm" state that it devours and therefore destroys tissues directly under the bark of ash trees. These tissues are vital in transference of water and nutrients throughout a tree. When they are disrupted they lead to the health decline of a tree, and after several generations of feeding beetle larva, the disruption leads to the tree's eventual death.

Minnesota has more ash trees than any other state in the United States, with the exception of Maine. We have three ash (or Fraxinus in

Latin) species susceptible to the Emerald Ash Borer: White Ash, Black Ash and the most common urban variety, Green Ash. Green Ash was one of the favored tree species that was used for replacement trees in cities when Dutch Elm Disease took out so many trees in the 1970s. Now all these relatively mature replacement boulevard trees are threatened again.

It is worth noting that there are other tree species, such as Mountain Ash and Wafer Ash, which, though they have "Ash" within their common names, are not true ash species and are therefore not affected by the beetle.

In an effort to stay ahead of the potential devastation of ash trees in Bryn Mawr, last summer a volunteer committee was formed to survey the number of ash trees and to assess relative density of the species within our neighborhood. In September 2009, a group of about two dozen Bryn Mawr residents gathered together to perform the Ash Tree Survey. These folks went out in pairs, carrying clipboards, to count ash trees growing within the front and back yards of homeowners. They also counted ash trees on city controlled boulevard property. Each ash tree was also categorized as either a small, medium or a large tree. It was felt that this size ranking helped determine the impact that would be felt if the tree were lost to disease.

**The raw numbers of the survey are as follows:**  
853 ash trees were counted.  
426 were boulevard trees.

427 were on homeowners' property (219 in front yards, 208 in back yards).  
Of the 853 trees counted, their sizes are as follows:  
141 were small (less than 6" trunk diameter)  
385 were medium (6" to 12" trunk diameter)  
327 were large (over 12" trunk diameter)

The density of ash trees within Bryn Mawr varied by area as well: Area 1, south of 394, had the fewest ash (15 trees total in 43 surveyed properties). Area 3, near the Meadows, had the most, with 315 counted in 155 surveyed properties. This is not too surprising given that Newton Ave., which runs through Area 3, is named Ash Street, on old maps of Bryn Mawr!

Another finding of the survey was that the number of ash trees averaged out to less than one per household (918 properties were surveyed, 853 ash trees counted). However, as mentioned, the density of ash trees was not consistent, since many properties had no ash trees at all and a few had as many as a dozen in one yard.

**Survey summary:**  
Bryn Mawr has a significant number of ash trees within it. They are distributed unevenly throughout the neighborhood. About a third of them are large and their loss will certainly affect the entire neighborhood, and especially those people living near each big tree. People living on "Ash blocks" whose boulevard trees are all ash, will perhaps suffer most if we lose all our ash trees in the next 5 to15 years, as is predicted.

**Preliminary suggestions moving forward:**  
If you have an ash tree, keep an eye on it for signs of health decline due to Emerald Ash Borer. These include canopy dieback, increased woodpecker activity on the ash tree, and shoots growing from either its roots or trunk.  
Think about planting replacement trees of a different species, if possible, to have a substitute tree maturing and "waiting in the wings". Diversify the tree species in your yard to reduce the risks associated with species-specific pests.  
Don't move firewood in vehicles from location to location. Buy only local firewood (it is believed that moving infested firewood has accelerated the spread of the beetle since it can only travel short distances – a matter of a few miles – by flying).

If you have ash trees on your property, realize that down the line you may be looking at long term chemical treatments if you want to save your tree(s) or you may need to budget for tree removal of diseased trees (think Dutch Elm Disease).  
It is extremely unfortunate that we have another devastating insect threatening the health of a portion of our trees. Those of us on the Bryn Mawr Emerald Ash Borer Committee only hope that in gathering information, and in being informed as a neighborhood, we can perhaps forestall the spread of the insect and take some proactive steps to lessen its negative impact.

- Kathy Ripke, member of the Bryn Mawr Emerald Ash Borer Committee



March 15, 1983	5" snow. Mid-March is a major change point in local weather. The first half of March is usually wintery with only a 4° warm-up in average temperatures. During the second half, the average temperature rises by 11°. The warmer and moister air is unpredictable: heavy snowfall, rain, fog, sun with rapid melting that can overload streams and rivers. Anything goes.
March 16, 1980	Federal court forces Reserve Mining Company to stop dumping taconite tailings in Lake Superior.
March 20, 1982	2.4" snow, bringing season total to 89.5", a record. Still thigh-deep in yard.
March 22, 1996	Comet Hyakutake easily visible in the eastern sky near the Big Dipper--a fuzzy blob to the naked eye.
March 29, 2010	Full moon, the Ojibwe Snowshoe breaking moon. In 1986, crocuses blooming in front yard.
March 30, 1997	Hale Bopp comet visible in NW sky over Wirth Lake, much brighter than Hyakutake.

LANDSCAPE GARDEN  
DESIGN & CONSULTING

TEMENOS  
Garden Services

612.377.4491  
www.temenosgardens.com

Edible Gardens · Bird/Butterfly Gardens · Native Plant Gardens · Rain Gardens  
Hillside Gardens · Cottage Gardens · Boulevard/Front Yard Gardens · Woodland Gardens

**Bryn Mawr Presbyterian Church Welcomes You!**  
✠  
**Sunday School Classes @ 9:30 a.m.**  
Age Five Through Third Grade  
Fourth Grade Through Confirmation  
✠  
**We Worship Each Sunday @ 10:30 a.m.**  
Nursery available for children 5 years & younger during Education Hour & Worship  
✠  
**All Are Welcome Here!**  
COMPLIMENTARY ADVERTISEMENT In Exchange for BMNA Meeting Space

Presbyterian  
**Bryn Mawr Church.org**  
420 Cedar Lake Road South, Minneapolis MN 55405 • 612.377.5222



## Letters

### Living History

*"Those who cannot learn from history are doomed to repeat it"*  
- George Santayana.

The topography and geology of Bryn Mawr is the result of a meandering set of waterways that over eons resulted in the Mississippi River, Basset's Creek and Minnehaha Creek. At one point in time the area known as Bryn Mawr Meadows was a sandy ever shifting river bottom that evolved into a bog. The Meadows has a checkered past, first as a swamp, then a lumber mill, a train yard, back to a swamp, a dump site and now an impound lot (fancy name for dump site) and playing fields. One thing has remained constant and that its instability.

The land under the meadows and impound lot is always in motion. The substrata are a mixture of sand and other organic matter. It moves from side to side and on occasion has opened up, swallowing train cars in the resulting sink holes. An attempt to stabilize the land under the meadows in early 1900's failed but left us with wonderful playing fields.

Thus I read with wonder and amusement plans to create a train yard for the light rail lines in the area to the east of the meadows. The proposed light rail train yard will be in the exact same area that "ate" the train cars in the 1800s. The land/substrata remains the same and to date the options for effectively stabilizing the area are limited and expensive. Again, it is the earth beneath the surface that is shifting up and down, left and right.

A consultation with a geologist (ok an email exchange with a

friend from grad school days) elicited the following quote from Jimi Hendrix: "Castles made of sand fall into the sea, eventually." And, every Bryn Martian knows the havoc our shifting soils and high water levels play with our sewer pipes and foundations. Our land only tolerates our homes and businesses.

The Transit authorities decision to reestablish a train yard in the area east of the meadows is ill conceived. We have thousands of years of history that tell us that buildings and train yards are not welcomed there. To be clear I support and welcome light rails return to the metro area. My advice is park the trains elsewhere for the sake of the trains.

A far better use of this land is a park: Perhaps one that is a larger version of The Quaking Bog found in Wirth Park. Imagine the western gateway to Minneapolis as Basset's Creek lined with Willows and Cottonwoods surrounded by marshland.

I imagine transit authorities leaning back in their chairs saying "While it is an engineering chal-

lenge it is nothing we can't solve." I urge you to review what happened to the Disney Companies plan to build a resort in the Mineral King are of Sequoia National Park. Disney went ahead despite warnings of horrific avalanches that swept down one side of the valley and up the other stripping the land of vegetation and any structures built by hapless humans. Simply looking at the site confirms nature's power and seeming desire to prevent development. The result for Disney was the loss of a few lives and total destruction of what they had built: The score Earth 1, Hubris 0. We face the same situation with the proposed train yard except it is the land underneath that moves.

I urge us all to learn from history and respect the power of place. Light rail is expensive enough and opposed by interests that compete for our transportation dollars. Attempting to stabilize the area east of the meadows is a bad idea that will rise up to bite us and perhaps eat the trains. Surely we can do better.

- Davis Klaila, Area 4



## Bryn Mawr Soap

On sale at Bryn Mawr Market  
and Twin Cities area co-ops

www.brynmawrsoap.com      612-374-3613

## Tai Chi & Qigong

Low impact exercise for Health & Well being  
Relieves stress & most common ailments

### Local Daytime Classes

Tuesday or Thursday mornings  
Open to all regardless of age or ability  
Call Colin Snow 612 377 6469  
Natural Step School of Tai Chi & Qigong  
www.naturalsteptaichi.com

## BRYN MAWR MOBILE

### 612-377-4743

Your full service repair facility. A wide selection of Bait and Tackle with any of your DNR license requirements. We are a AAA Road Service provider. We can help you with a lock out, gas, towing or jump starts. Call us about our towing discounts. We also tow away those junkers for you at no cost, just provide proof of ownership. Call us today to get your vehicle ready for tomorrow.



www.SUSANandANNIE.com





**Edina**  
5709 Beard  
\$294,900



**Bryn Mawr**  
2313 Mt View  
\$499,000



**Southwest**  
5116 Penn  
\$329,900


Call or email to see these listings or any other you are interested in.

612-839-6360



eachild@cbburnet.com

## Bryn Mawr Homeopathy



Laura Burr RPh, CCH, RSHom (NA)  
The Bryn Mawr Homeopath  
2600 North Wayzata Blvd  
Minneapolis, MN 55405  
ph. 612-207-8057

## BMNA.org



## Youth & Schools

Lynda Shabeen, Schools Committee Co-chair

### Anwatin Middle School Celebrates IB World School Authorization!

Anwatin Middle School and Southwest High School received notice from the International Baccalaureate Organization (IBO) in Geneva, Switzerland that their joint 6-10th grade Middle Years Programme (MYP) will be fully authorized. This recognition is something the schools have been working toward for the past four years and this means that Anwatin will be an IB World School. Southwest has been an IB World School since 1989, when its 11-12th grade Diploma Programme was authorized.

### Southwest High School Girls Nordic Ski Team Wins Sectional

The Southwest High School Girls Nordic Ski team won the 2010 Section 6 Championships on February 3rd at Baker Regional Park. The team advanced to the State Tournament at Giants Ridge, Biwabik on February 11th, where they took fourth place. Congratulations to local junior, Mina Krenz (Area 4) who is on the team.

### Bryn Mawr Family Fun Night

Family Fun Night, the annual school carnival at Bryn Mawr Community School is Friday March 19, 5:30-8. All proceeds go to the Bryn Mawr PTA

#### Some details:

- fun games for kids of all ages: sumo wrestling! fish pond! dancing! haunted house!
- young kids and toddlers welcome: parachute and gunny sack races for them!
- two dinner options available for purchase - hot dogs or veggie egg rolls and fried rice

Traditionally, the PTA holds a silent auction during FFN. This year, the auction will be held at a different event in the fall.

- Kristin Markert, Area 4

### Minneapolis Public Schools Changing School Options Informational Meeting

The BMNA Schools Committee will be hosting an informational forum with representatives from Minneapolis Public Schools. Please join us at 7 pm on March 23rd in the Bryn Mawr Elementary Cafeteria.

### Bryn Mawr PTA Plant Sale Is Back!

Once again, the parents of the Bryn Mawr PTA are having a big plant sale. Order forms will be inserted in the April Bugle. You will also find order forms at the school and in some of the downtown businesses or email [jjolstad@mpls.k12.mn.us](mailto:jjolstad@mpls.k12.mn.us) and have a PDF file sent to you.

There will be a huge selection of annuals, perennials, and the world's most beautiful hanging baskets. Plus, there will be herbs and tomatoes. All plants will be delivered to the school for you to pick up.

#### What makes our sale special?

Unique Selection - Even if you are a loyal supporter of another plant sale, with 150+ varieties, we know you will find something you like! High Quality Locally Grown Plants - Repeat customers know they will get full-size beautiful plants.

Orders are due by April 23. Plants will be delivered in early May with an overstock sale the next day. Thank you in advance for your generosity this year and enjoy your wonderful plants!

- Jenny Warner, Area 6 (374-5156)



Fifth graders Emily Abel (Area 2) and Kalley Carlson (Area 4) were among the Bryn Mawr skiers at the 2010 City of Lakes Minne-Loppet.

## Local Kids Ski with City of Lakes Nordic Ski Foundation

The Bryn Mawr Skis Program started in 2004. Through sponsorship of the City of Lakes Loppet, the City of Lakes Nordic Ski Foundation (COLNSF) obtains ski equipment for students at Bryn Mawr Community School. Physical Education Instructor Anita Chavez, Foundation coach Margaret Adelman, and North Memorial Medical Center physicians combine to instruct third, fourth and fifth grade students in fitness and skiing through the Bryn Mawr physical education classes.

Classes usually start with kids learning about the heart or lungs, how exercise affects pulse rate or breathing patterns, or how lack of exercise relates to obesity or other health problems. The kids then put on their ski equipment and head out the door directly onto the ski trails behind Bryn Mawr and Anwatin schools.

UCare Minnesota provided weekly recipe cards with "Skiers' Lunch," "Skiers' Snacks," "Skiers' Dinners," etc. At the end of the

program UCare treated the students and their families to a nutritious banquet and each skier received a graduation certificate and goodies from UCare.

At the end of this year's program, 30 of the kids participated in the Sons of Norway Minne-Loppet in Uptown.

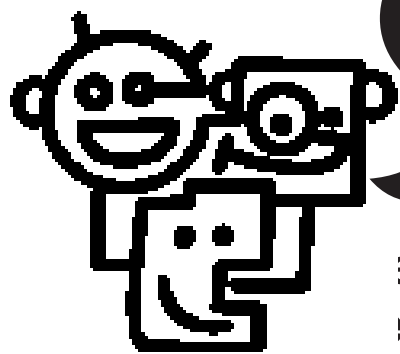
Another 30 Anwatin Middle School students participated in the COLNSF's Anwatin Ski Team, a partnership between the Foundation and the Anwatin Community Education Department. The Foundation provides equipment and coaching for this popular after school activity.

Many of these students also participated on the Anwatin Race Team, a partnership between the United States Olympic Committee and the Nordic Ski Foundation. The idea behind the race team was to take middle school students at Anwatin and work with them throughout the fall and winter and provide them with multiple opportunities to compete.

## Bryn Mawr Elementary's Family Fun Night is March 19th!

5:30-8 p.m.

Food,  
Games, Prizes,  
FUN!



Bryn Mawr neighbors invited to join the staff, students and families of Bryn Mawr Community School for an evening of FUN and FUND RAISING!

This is a family event. All children must be accompanied by an adult.



CHIANG MAI THAI

Calhoun Square  
3001 Hennepin Ave. S.  
Minneapolis, MN 55408

(612) 827-1606  
Fax (612) 827-1635

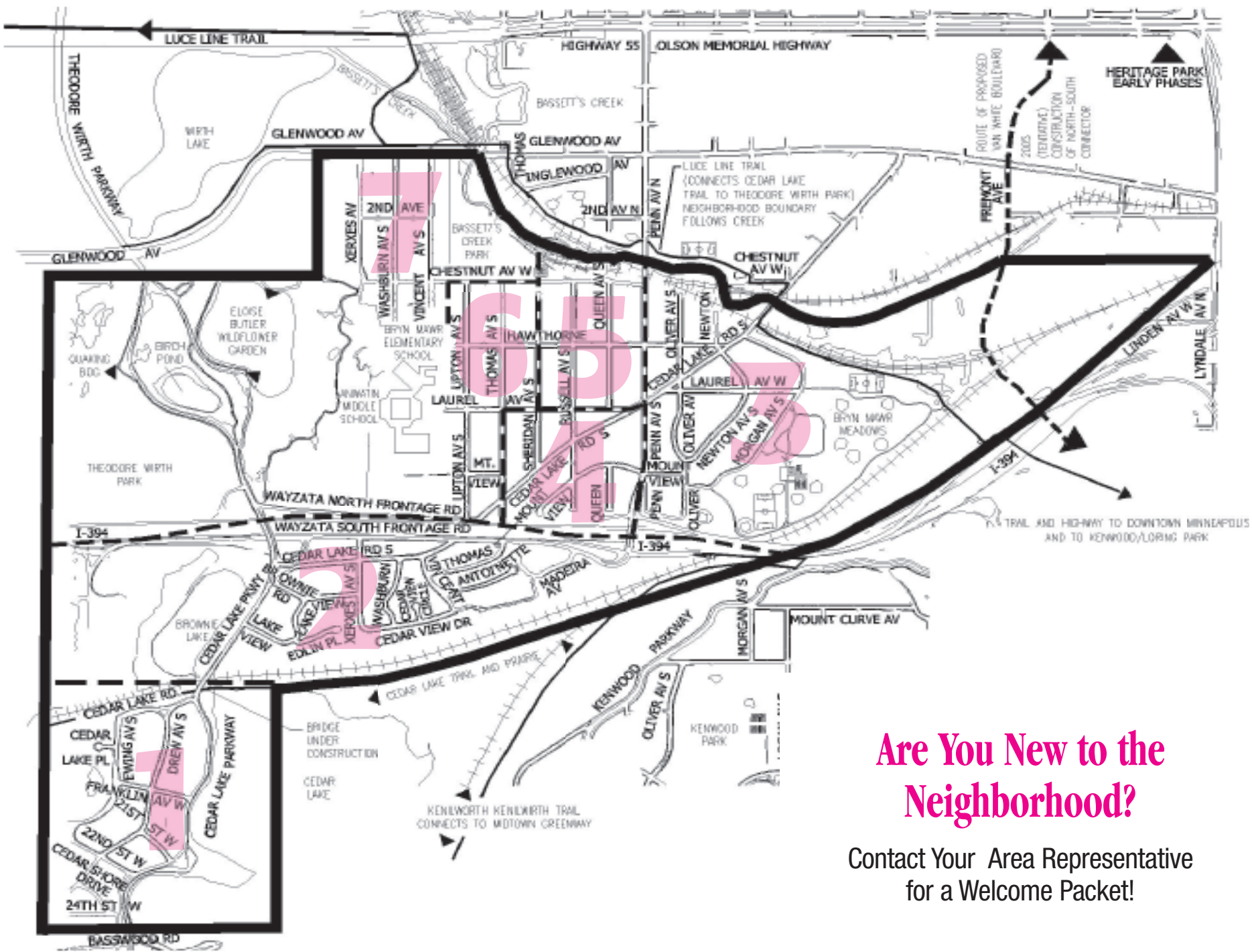


DEAN BUILDERS

Residential, Remodeling, Additions,  
General Contracting  
Licensed, Bonded, Insured

Jeffrey Dean  
(612) 377-6413  
Cell (612) 245-7369

602 Thomas Ave. So.  
Minneapolis, MN 55405



## Are You New to the Neighborhood?

Contact Your Area Representative  
for a Welcome Packet!

# THE BRYN MAWR NEIGHBORHOOD ASSOCIATION

PO Box 16437, Minneapolis, MN 55416

### BMNA Board Members

<b>President:</b>	
Marlin Possehl	377-5662
<b>Vice President:</b>	
Larry Skov	598-0753
<b>Co-Treasurer:</b>	
Ben Horn	382-7982
Adam Maki	343-3346
<b>Secretary:</b>	
OPEN	
<b>NRP Steering Committee Chair</b>	
Scott McLaughlin	374-9494
<b>Community School Advisory Council:</b>	
JoEllyn Jolstad	377-8968

### Area Representatives

1	Greg Froehle	926-2882
	Dave Holets	922-8274
2	Lynda Shaheen	374-4201
	Susan Verrett	377-7447
3	Rick Carter	381-1473
	Jessica Wiley	374-3481
4	Christopher Etz	378-2987
	Paul Markert	381-2604
5	David Logsdon	377-9689
6	Jay Peterson	377-4677
	Barry Schade	377-8152
7	Steve Harvey	374-3613
	Andrew Kraling	226-6249

### Bugle Corps

**Editor**  
JoEllyn B. Jolstad 377-8968  
bugle@bmna.org

**Contributing Editors**  
**Neighborhood Coordinator**  
Patty Wycoff 377-4565  
pwcoordinator@comcast.net

**Police Liaison CCP/SAFE**  
Tim Hammett 673-2866

**Display Ads**  
Deryck Jolstad 377-8968  
djolstad@msn.com

**Want Ads/Wildlife Watch**  
Carolyn Bastick 377-8457  
cj0159@aol.com

**Subscriptions**  
Kevina Munnich 374-1854  
kevina@munnich.com

**Mailing Address**  
P.O. Box 16437  
Minneapolis, MN 55416-0437

**Drop Off Box**  
Bryn Mawr Market,  
behind the counter

**Web Site**  
bmna.org

The Bryn Mawr Bugle is the official newsletter of the Bryn Mawr Neighborhood Association (BMNA) and is published every month, except January.

Distribution is free to Bryn Mawr residents; copies are also available at the Bryn Mawr Coffee Shop, the Bryn Mawr Market, Bryn Mawr Mobile and Cuppa Java. Subscriptions are \$21 per year. Letters must be signed and include a phone number. They are subject to editing. Please call the editor if you have questions about submitting material. Electronic submissions (CD or email) are preferred.

### Copy deadline for the April issue is March 19!

Display Ads are due March 19. Ads must be pre-paid & camera ready.

Call Deryck Jolstad at (612) 377-8968 or djolstad@msn.com for rates.

GENERAL ADVERTISING POLICIES: All ad copy is subject to approval by the paper, which reserves the right to reject or request changes to an ad. Ad placement does not imply endorsement by the BMNA. The advertiser, not the paper, is responsible for the truthful content of the ad. Readers use service/product providers at their own risk and are solely responsible for checking references, state agencies, BBB, etc.