



BRYN MAWR BUGLE

Published by the Bryn Mawr Neighborhood Association

November 2016

2016 BMNA Harvest Dinner

Thursday, November 17, 6:00–8:00pm at Bryn Mawr Elementary School

Celebrate fall and give thanks for your friends and neighbors at the annual potluck Harvest Dinner, Thursday, November 17, from 6:00 – 8:00 PM at Bryn Mawr Elementary School. The Bryn Mawr Neighborhood Association will provide home-roasted turkey; bring a side dish or dessert to share. We're hoping some of the award winning squash recipes from last year will resurface! For many years, the Harvest Dinner has been held

the last week of October, just before Halloween. But the tradition of having a fall potluck actually started in the early 1990's at Thanksgiving time. The BMNA partnered with Bryn Mawr Presbyterian Church to host a Sunday noon Thanksgiving dinner, first in the church basement, and then at Bryn Mawr Elementary when the new community room was finished. For a few years, the church actually

held their service in the small gym at BME, which used to be a chapel. With so many October events and Halloween parties, the BMNA has decided to return to a November potluck- the Thursday before Thanksgiving. Be there by 6:00 for an opportunity to try all the side dishes. We want to thank our local Bryn Mawr businesses in advance for the fabulous door prizes they provide every year.



Sip and Stroll 2016

Our 8th Annual Sip and Stroll event was blessed with perfect weather this year. A few stats from this amazing event; 16 of our wonderful businesses participated, 90 neighbors visited every participating business, 17 prizes were donated by our businesses. These businesses rolled out the red carpet for our neighbors and showed everyone how much they appreciate our business. Our local businesses are the back bone of our neighborhood. Thank you neighbors and business owners for strengthening our community. *This event is organized by the Bryn Mawr Neighborhood Association.



Save the Date!

★★★★★
Bryn Mawr's 
Saturnalia
Sat, December 10th



2016 BMNA Events

- April 22 -**
Bryn Mawr Elementary Family Fun Night
- May 7 -**
Bryn Mawr Festival of Garage Sales
- May 11 -**
Bryn Mawr Neighborhood Association Annual Meeting and Potluck Dinner
- July 16 -**
Bryn Mawr Garden Tour
- August 18 -**
Ice Cream Scoop Off
- October 13 -**
Sip and Stroll
- November 17 -**
Bryn Mawr Harvest Dinner
- December 8 -**
Anwatin Craft Fair
- December 10 -**
Saturnalia



If elephants roamed the
streets of Bryn Mawr,
I bet they'd never forget
a name like "Kalitowski."


Jim Kalitowski
R E A L T O R

He's been around your block.



612-867-6703
jimkalitowski@remax.net

©1996 James Kalitowski, Realtor.



Recycling
www.ci.minneapolis.mn.us
/solid-waste
(612) 673-2917

Bryn Mawr Recycling Schedule

	Monday	Tuesday
Area 1	November 7 November 21	
Areas 4W, 5W, 6, 7	November 14 November 28	
Areas 2, 3, 4E, 5E		November 15 November 29

Use it up, wear it out, make it do, do without. Recycle.

What are you doing this weekend? Why not go DANCING!
LIVE music is more FUN!



www.percolatorsband.com
Check our website & come see us. We'll rock your socks off!
Hans Gasterland, drums. Call today: 612-723-5038



Milda's Cafe
Established in 1965
Breakfast All Day!
Try Our Traditional Pasty
MONDAY - WEDNESDAY - FRIDAY
Takeout Available
**Open Monday - Friday 6am to 3pm
Saturday and Sunday 8am to 2pm**

612-377-9460 • 1720 Glenwood Ave, Minneapolis



MILL CITY DENTAL
JAY WILLIAMS, D.D.S.

612-377-3740
2218 LAUREL AVENUE • MINNEAPOLIS, MN 55405

Be part of the Bugle!
BUGLE NOTES • FASCINATING FOLKS • PHOTO FEATURE
• OUT & ABOUT • YOUTH & SCHOOLS • PARKS •
BUSINESS SPOTLIGHT • ENVIRONMENT • GARDENS
Email your neighbor news to bugle@bmna.org or
drop it in the Bugle Box at the Bryn Mawr Market.



From the Editor

I have never read Barbara Gordon's 1980's memoir, "I'm Dancing as Fast as I Can" but lately, this has been the narrative running through my head. As I recall, it's a story of keeping up appearances while struggling with a drug addiction. I certainly have not gotten to this point but somehow the words still fit how I feel.

At work, I have been covering for two people who are off on international adventures. Last week, I was also out of the office for three days "on vacation" in Boston and Philadelphia. I even left my computer at home so I would not be tempted to work on the road (and so I didn't have to haul it around).

Imagine my surprise when I returned and no one had done my work while I was gone. This trip was planned long before I knew my support staff would be out of the country. The purpose was to take our 17-year-old to visit schools.

It would be one thing if we could afford leisurely, comfortable accommodations. But, no. This was a mass transit-laden, lug your-bags-everywhere, bargain Air b&b excursion, worthy of the future college student who accompanied me.

We did fit in some relaxing when we met up with my older daughter and drove down to the shore for a visit with my aunt and her kitties.


I am not actually complaining, just acknowledging that I am exhausted and hoping a breaking point is not looming in my future. At times like these, my go-to sentiment is gratitude. I "get to" cover for two amazing people so they can be in Ireland (on their honeymoon) and Australia (visiting their spouse who is currently assigned there); not, I "have to" work lots of extra hours and have trip-envy.

I have a wonderful, talented child who has a bright future ahead of her and is willing to let me play a part in planning it. That's nothing to sneeze at!

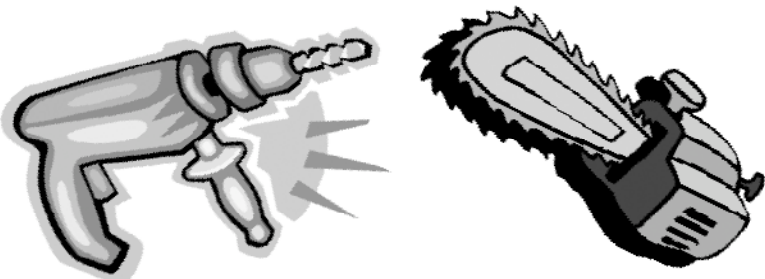
Back in the 'hood, I employ my standard coping strategies of easy meals, neglecting the house and yard and ignoring the book I am supposed to have finished in time for Book Club tomorrow night. Life is only boring if you let it be and I will always choose over-extended over sitting around.

As I wrap up another Bugle and I am truly grateful to see all the fun things we have going on here. I am glad to celebrate the work of the BMNA volunteers and staff and to know they are appreciated by the community.

- JoEllyn Jolstad, bugle@bmna.org

NORTH END HARDWARE
**Exceptional Service**

**Have a job?
We have a Tool.**



**Northend Rental
Just Rent It!**

NORTH END HARDWARE & RENTAL
at PENN and LOWRY
Hours: M-F, 7 a.m.-6:30 p.m.; Sat, 7 a.m.-5 p.m.
Darryl Weivoda, Owner
612-529-9151 • Northendhdwr@aol.com

'That Food Girl' Pens Minnesota Cookbook

As "That Food Girl," Minneapolis-based, Minnesota native Betsy Nelson specializes in food styling and recipe development. With the 2016 release of *Tasting Minnesota*, she now adds cookbook author to her résumé.

"I've been working with food, in one capacity or another, for most of my life," says Nelson. Her experience as a chef includes stints at Café Brenda, Azur, Tour de France, Atrium Catering, D'Amico Catering, Aveda Spa and Retreat Center, and Aveda Corporate Headquarters.

Tasting Minnesota exemplifies Nelson's passion for good food while showcasing her colleagues in kitchens across the North Star State.

"Minnesota chefs are riding the healthy-food, farm-to-table wave and winning national awards and attention," says Nelson. "But they're also humble, quick to share credit for their success with local farmers and food producers who provide them with so many quality ingredients."

Nelson points out that Minnesota is home to 176 farmer's markets and nearly 50 food cooperatives. "People want to know where their food comes from," she says. "We're fortunate here to have such an abundance of local produce, meat, and dairy."

While offering a wide cross-section of the state's eateries, *Tasting Minnesota* also champions that local food. Recipes range from The Third Bird's Almond French Toast with Roasted Strawberry Jam and Brown Sugar Cream to Spoonriver's Walleye with Sesame Crust and Ginger-Orange Teriyaki. In between, readers will find dishes featuring locally grown kale, wild rice, squash blossoms, and apples, as well as free-range chickens, artisanal cheeses, foraged blueberries, and wild chanterelles.

In all, sixty-five chefs contributed a total of 103 recipes to the book. The dishes celebrate the state's best restaurants, cafés, food trucks, bed-and-breakfasts, and caterers from Rochester to Hallock, and from Amboy to Grand Marais. In the heart of it all is a cluster of top eateries in the greater Twin Cities region.

Nelson's talented husband, Tom Thulen, shot all the photographs for the book. "Putting a book together is a lot of hard work," Nelson says. "But it was also a lot of fun. So many chefs generously shared their passion to make this book possible. And it was a real treat for Tom and I to collaborate on as well."

Tasting Minnesota (ISBN: 978-1-56037-655-2, \$29.95, Farcountry Press, 2016) is available at local bookstores and gift shops, through online retailers, or from Farcountry Press at 1.800.821.3874, www.farcountrypress.com.

about the author

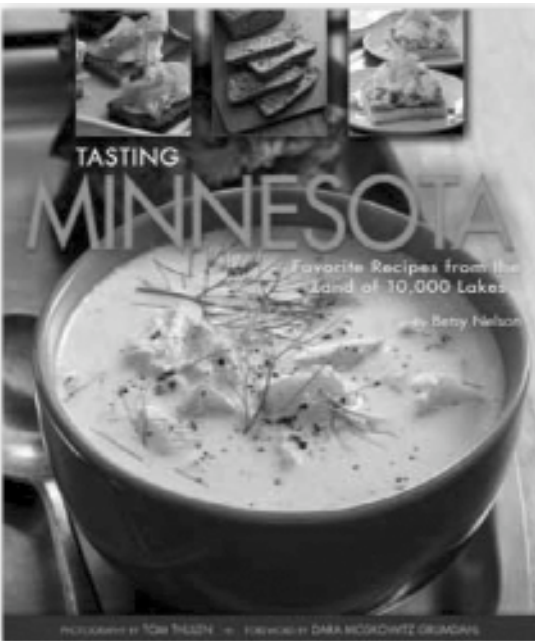
Betsy Nelson, a native Minnesotan, has degrees in psychology and art from the University of Minnesota. After forging her way through college working food service jobs as a student, she sought her career in the restaurant industry. She spent ten years working throughout the Twin Cities at a variety of restaurants, including Café Brenda, Azur, Tour de France, and the Aveda Spa and Retreat. She then made a natural transition to food styling, calling upon her art background and experience with food. She also works as a recipe developer and has written recipes for a variety of commercial clients and magazines including Target, Experience Life, Renew, and The Viking. She is married to Tom Thulen, who took the amazing photographs in *Tasting Minnesota*, and has two children. They live in Minneapolis in a home they call "the Urban Farmstead," where they grow much of their own fresh fruits, vegetables, and herbs.

about the photographer

Tom Thulen is a food and still life photographer living and working in Minneapolis. Earlier in his career, he spent time in New York City working in the food and wine industry, where he developed a passion for good food and wine. He now works to capture that same passion in his photography.



Bryn Mawr Neighbors, Betsy Nelson and Tom Thulen signed their new book at the 2016 Sip and Stroll.



Tasting Minnesota: Favorite recipes from the land of 10,000 lakes
written by: betsy nelson
photography by: tom thulen
isbn 13: 978-1-56037-655-2
price: \$29.95

WEEKLY MEETINGS OF ALCOHOLICS ANONYMOUS
are held at Bryn Mawr Presbyterian Church,
Cedar Lake Road and Laurel Avenue, on
Tuesdays at 7:30 p.m.
All interested people are invited to attend.



Bryn Mawr Soap

On sale at Bryn Mawr Market
and Twin Cities area co-ops

www.brynmawrsoap.com

612-374-3613

ROLAYNE'S HAIR DESIGN


408 Cedar Lake Road
612.377.4179

Hair cuts, color, style and product.
Appointments & walk-ins welcome!

Juliette
Paul Mitchell products

Nancy
Organic products

LINDEN HILLS




DENTISTRY

We'll make you smile!

We welcome new patients!

Dr. Kordie Reinhold Dr. Peter Hinke

Dr. Chas Salmen Dr. Jane Puntillo



4289 Sheridan Avenue South, Minneapolis, MN 55410
www.lindenhillsdentistry.com (612) 922-6164



Call Minneapolis 311 for information

Weekdays 7 AM to 7 PM

Weekends 8 AM to 4:30 PM

Minneapolis 311 is more than a phone number. It's also a 24-hour online resource for access to City services.
Minneapolis311@minneapolismn.gov

Domestic Abuse Project (DAP): Supporting Communities Threatened by Family Violence

The murder of 23-year-old Lyuba Savenok in Eden Prairie this past May was the fourth case of domestic violence homicide in the state during 2016. Lyuba, a mother of two, was stabbed and killed by her husband of six years, Eugene Savenok. Eugene was set to go on trial in June for misdemeanor charges related to domestic abuse. He has now been charged with two counts of first degree murder. This story could have had a different ending, if help had been available for Lyuba and Eugene.

At DAP, they know how to end the cycle of abuse. They seek to permanently break the inter-generational cycle of family violence by leading societal change and by providing men, women and children with essential tools needed to eliminate violence in their lives.

DAP Advocacy supports victims as they navigate the legal system, and connects them to resources a victim often needs in their moments of crisis.

DAP Therapy is for men, women and children who are at a place in their lives when they can make real changes in their behaviors. In 1979, DAP was the first organization in MN to offer a therapy program for men who use abuse in their intimate rela-

tionships. Since then, DAP has worked to not only heal but to prevent – as their work with children is truly preventative. Without intervention, children who witness domestic violence are 64% more likely to grow up to be abusers or victims.

Working with the criminal justice system, public policy makers, and other community agencies, DAP strives to open the conversation around domestic abuse in order to lead societal change.

How are funds donated to DAP used?

DAP has a budget of roughly \$1.8 million dollars, which funds programs and services such as:

- The Men's Program – teaching men about the cycle of domestic violence and how to stop their use of abuse.
- The Women and Children's program – supporting women and children on their journey of healing from the traumatic effects of abuse.
- Providing crisis intervention services for families who are trying to escape the abuse present in their lives and/or navigate the criminal justice system as an abuse victim.

For more information about DAP, contact Jessica Wiley, jessicasusan-wiley@gmail.com, or visit DomesticAbuseProject.com.

Bryn Mawr Neighborhood Association Calendar - November 2016

All meetings are open - everyone is welcome. Neighbors are urged to attend and participate in meetings and activities of special interest to them.
Bryn Mawr Neighborhood Association and its committees meet at Bryn Mawr Elementary School during the school year, unless otherwise noted.

Sunday	Monday	Tuesday	Wednesday	Thursday	Friday	Saturday
		1	2	3	4	5
6	7	8 Election day bake sale @ Bryn Mawr Elementary, 7 am-8pm	9 BMNA monthly meeting, Bryn Mawr Elementary cafeteria, 6:30pm	10	11	12
13	14	15	16	17 BMNA Harvest Dinner, Bryn Mawr Elementary cafeteria, 6-8pm	18	19
20	21	22	23	24	25	26
			Minneapolis Public Schools closed, for Thanksgiving Holiday - November 23-25			
27	28	29	30	Save the Dates: <i>Anwatin Craft Fair, December 8th</i> <i>Saturnalia, December 10</i>		



Out & About

IT'S A FAMILY AFFAIR...

By Patty Wycoff

I have lived in Bryn Mawr for almost 21 years. Over the years, I have met many people. This is one of the benefits of living in a neighborhood with a strong neighborhood association that provides organized events

for neighbors to connect. One fascinating thing I have learned over the years is that several family members have chosen to live in Bryn Mawr. Some them in the same area! At one time, my mother-in-law and father-in-law owned a home in Bryn Mawr AND my sister-in-law! I have compiled a list of the family members I am aware of living in Bryn Mawr. Are there others?

Please share with me at pwcoordinator@comcast.net

Sister and brother, Lynda Shaheen and Chris Shaheen both live in Area 2.

Sister and brother, Bonnie Addison and Doug Denham both live Area 5. Bonnie's daughter, Ava Addison lives in Area 4.

Sisters, Jenny Warner and Katy Conners live in Area 6. Their brother, Burk and sister, Ann also lived in Bryn Mawr at one time.

Sisters, Marilyn Dean and Kristin Anderson live in Area 6.

Mother and son, Donna Hoffman and Isaac Amundson live in Area 6.

Sisters, Jill Behnke and Jolene Behnke live in Area 7 NEXT DOOR TO EACH OTHER!

Brother, James Grant lives in Area 5 and his sister, Adrianna Grant recently moved to Area 6.

Brother, Jack Mader lives in Area 3 and his sister, Louse Mader lives in Area 5

It really is a family affair here in Bryn Mawr.



Anwatin Arts & Craft Fair

Thursday, December 8, 5:30-8:00pm

Dec. 8 Anwatin Craft Fair is Looking for Crafters!

The BMNA Schools Committee is planning the Anwatin Craft Fair and are looking for crafters. The craft fair is on Thursday, December 8. This is a well-attended craft fair. The craft fair is the same night as the Anwatin band/choir concert, the Empty Bowls project and the Taste of Anwatin. The fee is only \$15. The fee includes a 6-foot table to display your wares and advertising to promote the event. The event begins at 5:30 and ends at 8:00 PM.

Please complete this registration form or go to bmna.org and register using our PayPay link. The deadline to register is December 4.



Anwatin Craft Fair Registration Form

The deadline to register is December 4, 2016.

Name _____

Phone number _____

Email address: _____

What will you be selling? _____

How many 6ft tables would you like _____?
(Table rental is \$15 each.)
Please make checks payable to BMNA.

Mail your registration to:
Bryn Mawr Neighborhood Association
Attn: Craft Fair
2915 Wayzata Blvd
Minneapolis, MN 55405-2145

Contact Patty Wycoff with any questions.
pwcoordinator@comcast.net

Minneapolis Audubon Society Monthly Events

Friday, November 11, 2016 1 p.m.

RIVER REVIVAL: WORKING TOGETHER TO SAVE THE MINNESOTA RIVER – John Hickman

See the documentary film River Revival: Working Together to Save the Minnesota Rivershowcasing the efforts of people from all walks of life to improve and protect water quality in the Minnesota River Basin and talk with co-producer John Hickman of EPIC Media.

Join the Minneapolis Audubon Society for food and fun at the Bryant Square Neighborhood Center, 31st & Bryant Avenue S, just one block south of Lake Street, easily accessible via the #4 bus, which runs every 15 minutes! For more information call 763-533-8381.

Voices for Peace

**Twin Cities Peace Choir
presents
"SEASON OF PEACE"**

A musical celebration of the Winter Holidays
Sunday, December 4th 4:00 pm
Bryn Mawr Presbyterian Church
*A suggested \$10 donation will benefit
Second Harvest Heartland*

SUPPORT THE BMNA!

We have some of the cheapest rates around!
Why don't you advertise in the Bugle?!!

Display Ad Rates	Page Size	Residents	Non Residents
Full Page	10"w X 16"h	\$260	\$300
Half page, horizontal	10"w X 7 7/8"h	\$135	\$155
Half page, vertical	4 7/8"w X 16"h	\$135	\$155
Quarter page, horizontal	10"w X 3 7/8"h	\$70	\$80
Quarter page, vertical	4 7/8"w X 7 7/8"h	\$70	\$80
Quarter page, 3-column	7 3/8"w X 5.25"h	\$70	\$80
Quarter page, 1-column	2 3/8"w X 16"h	\$70	\$80
3-column, 1/4 high	7 3/8"w X 3 7/8"h	\$50	\$65
Sixth-page vertical	4 7/8 x 6 3/8	\$50	\$65
Eighth page, horizontal	4 7/8"w X 3 7/8"h	\$35	\$45
Business Card, horizontal	4 7/8"w X 2 3/8"h	\$25	\$30
Business Card, vertical	2 3/8"w X 3 7/8"h	\$25	\$30
Inserts	8.5"w X 11"h	\$145	\$170

(Inserts must be printed by you, double or single-sided.)

Full-Color Now Available!
\$80 in addition to ad placement fee (above)

Classified Ad Rates:
\$4.50 minimum (4 lines, approx. 40 characters per line)
\$.50 per additional line

Ads are due the 20th of each month and should be camera-ready and paid in advance.
For more information contact Deryck (612-377-8968)
djolstad@msn.com

Superintendent Presents Proposed 2017 MPRB Budget

Public comment opportunities scheduled November 2, 16, 30 and December 7

The Superintendent's Recommended 2017 Budget for the Minneapolis Park and Recreation Board (MPRB) focuses on enhanced maintenance, rehabilitation and capital investments for neighborhood parks, continued sound fiscal management, providing responsive service delivery to meet the changing demographics and needs of the community, maintains the park system within available resources and, for the first time, implementing a racial equity tool throughout the budget process.

In 2017, of every dollar Minneapolis residents pay for property taxes, eight cents will go to the Minneapolis Park and Recreation Board.

The Superintendent's Recommended 2017 Budget totals \$76.6 million for the general operating fund, \$3.2 million for the special revenue fund, \$10.7 million for the enterprise operating fund and \$20.8 for capital project funding.

"The 20 Year Neighborhood Park Plan, or NPP 20, is the culmination of the Closing the Gap: Investing in our Neighborhood Park initiative, which began in 2014," said Superintendent Jayne Miller. "NPP20 is significant and historic in two ways: it provides long-term funding for Minneapolis neighborhood parks as well as explicit terms for all other funding between the MPRB and City of Minneapolis, and it adopts the

Criteria Based System Ordinance that directs the spending of capital and rehabilitation funds for neighborhood parks based on racial and economic equity."

The proposed budget and related documents are available for viewing at www.minneapolisparks.org/budget or by calling 612-230-6400.

The public may comment on the proposed budget during the following times:

November 2, Public Comment Session
Administration and Finance Committee meeting, MPRB Headquarters, 2117 West River Road, Minneapolis. The Committee meeting will follow the Board's regular meeting, which begins at 5 pm.

November 16, Public Comment Session
Regular Board meeting, MPRB Headquarters, 2117 West River Road, Minneapolis, at 5 pm.

November 30, Administration & Finance Committee Approval of 2017 Budget
MPRB Headquarters, 2117 West River Road, Minneapolis. Comments may be made during 5:30 pm regularly scheduled Open Time session.

December 7, Public Hearing and Board Approval of 2017 Budget
City of Minneapolis public hearing on 2017 tax levy and 2017 Budget, City Hall, Council Chambers Room 317, 350 South 5th Street, Minneapolis, at 6:05 pm.

November 1, 1991	The epic Halloween blizzard continues. Heavy snow arrived with the trick-or-treaters and continued all night and all day, dumping 29 inches on the Twin Cities, 11 inches more than the previous record for one storm. Duluth received 3 feet of snow. My brother's wife went into labor; he spent all night shoveling to get her out.
November 8, 2016	Election Day. After keeping weather records as a hobby for 40 years, I'm looking for candidates who not only pay lip service to fighting global warming, but understand the details of how to build a low-carbon infrastructure for ourselves and our descendants. These include more dense living patterns and major investments in transit. I'd recommend Lee Munnich's article in last month's Bugle.
November 14, 2016	Full moon, the Ojibwe freezing moon.
November 19, 2011	1:00pm - Two pileated woodpeckers checking out a large cottonwood tree at Hawthorne and Upton



From the ARCHIVES

This month's feature first appeared in the April 1981 Bugle. Evie and John Anderson still live in Bryn Mawr!

If you have historic information or photos that you would like to share with the Bugle, please email Kevina Munnich at kmunnich@gmail.com.

MY BRYN MAWR ROOTS

— Evie Anderson

In 1969, when we bought our house here, my husband John and I didn't know anything about Bryn Mawr, even though we both had grown up in south Minneapolis. It came as quite a surprise when, a few years later, I found out that my grandfather had worked 75 years ago right next to the present location of our house.

My grandmother visited our house many times over the years we have lived here (she died last summer at age 92). She often said that "it wasn't far from here" that she and her husband had lived the first few years they were married...but the area had changed so much over the years that she couldn't pinpoint it.

One of our elder neighbors mentioned that the houses just to the north of (400 through 424 Upton Ave.) are newer than ours because the property had been a large farm for many years, even as the residential neighborhood developed. The farm was owned by the three Hallorans.. two unmarried sisters and their brother. Somehow the subject came up once when I talked to Grandma, and she told me that my mother, her first child, was born on or near the Halloran farm in 1905!



Mary Peterson, Charles J. Swanson
Wedding picture March 16, 1904.

Grandpa (Charlie Swanson) came from Sweden at the turn of the century when he was in his late teens. He found a job on the Hallorans' dairy farm, milking cows and delivering milk in the Lowry Hill area by horse-drawn cart. He soon met Mary Peterson, who had grown up in Lakeville. They were married in 1904, when she was 16 and he was 23. The minister was Donald Colp of Robbinsdale, who later became one of the better-known doctors in the area.

Like the other farmhands, Grandpa lived on a farm. When he married, he got his own small house, where my mother, Bernice, was born in 1905. Grandpa had to take the horse "to town" to get the midwife.

Grandpa's milk route was in a wealthy area; of his dealings were with maids rather than housewives. One maid in particular irked him. She never had a clean container for him to pour the milk into and kept him waiting almost every day. So, one day my grandpa emptied that household's order of milk from his five-gallon pail into the pot that was sitting in the kitchen, awaiting the next trip to the outhouse. He never was kept waiting again!

Grandpa left the Halloran farm a few years later to start his own milk business in partnership with his sister's husband. The partner was evidently the archetypal ne'er-do-well brother-in-law. He left all the work to Grandpa, and it wasn't long before both the partnership and the marriage to grandpa's sister were dissolved. Meanwhile, the Swanson family had moved from the farm to a house on 250 Greeley Ave. N. (near Western Ave., which is now Glenwood) and later to 821 Russell Ave. N., where they lived for most of the time their three children were growing up.

Grandpa got a job as a teamster, in the original sense of a driver of a team of horses, to haul building materials. His employer was the Beckman Construction Company, which was located on the corner of Penn and Cedar Lake Road now occupied by Dav-Tron. The family had their own victory garden in the tough times during and following World War I, in a plot behind the construction company. Mother remembers walking from their house at 821 Russell N. to the garden to pull weeds and pick potato bugs.

All three Swanson kids graduated from North High School and have lived all their lives in Minneapolis. Two of them are now great grandparents. When my mother started reminiscing about those early years, our 7-year-old son Clint was especially interested in the tales of the trips by streetcar (before anyone had a car) to Minnehaha Falls. He wanted to know if Minnehaha Falls "had water on it" then.

(Ed. Note: There will be a second installment from Evie in a forthcoming Bugle.)

I'm gathering information about the homes (and families) that had been in the Bryn Mawr Meadows through the 1960s. Some of those families stayed in Bryn Mawr after their homes were demolished for the park expansion. If you would like to share your story, please contact me: Kevina Munnich - kmunnich@gmail.com. I think it's important to record this history before we forget...

Thinking of buying or selling
a home in 2016?

I can help, call Today!

Experienced In Saving You Money

Katie Johnstone, REALTOR®

612.889.3237

KatieJohnstone@edinarealty.com



Edina Realty

Edina Realty is an Equal Housing Opportunity Company

For news you can use, visit the NEW www.bmna.org.

Treats and Coffee on Election Day

Bryn Mawr school is a polling place, and the Bryn Mawr PTA will once again be providing coffee, water and treats, to sustain you during the long wait to vote (last Presidential election, Bryn Mawr had 92% voter turnout - highest in the Twin Cities!!). Treats are free of charge, but the PTA will gratefully accept any donations. This year, donations will go to help fund our new OUTDOOR CLASSROOM AND SCHOOL GARDEN, which will be located in a fully enclosed courtyard, within our school! Construction and planting (by students) will begin next Spring.

-Lisa Mills, Bryn Mawr PTA President



Help Students Vote on Election Day

Volunteers needed at Minneapolis Polling Places.



Since 2004, in partnership with the Minneapolis Public Schools and the Minneapolis City Elections Department, Kids Voting Minneapolis (KVM) has offered Minneapolis K-12 students the opportunity to go to the polls on Election Day with their parents/guardians and vote. Students vote in their own voting booth, on their own ballot, and get an “I Voted” sticker. This authentic voting experience furthers

civic education and helps students understand the importance of voting. For this to happen, KVM needs 400 community volunteers who staff the 130 city precinct polling places to assist students as they vote. We are in need of volunteers for Nov. 8. This is a wonderful, one-time volunteer opportunity plus a one hour training session. The Election Day shifts are 3 hours— 2:00-5:00pm or 5:00-8:00pm. If you can help, contact the KVM Volunteer Coordinator, Jennifer Nilsen at mplskidsvoting@gmail.com. Kids Voting Minneapolis is a community-based, nonpartisan, nonprofit organization working to prepare Minneapolis’ 50,000 K-12 students to be educated, informed voters. Kids Voting Minneapolis combines civic learning in the classroom, family dialogue at home, and an authentic voting experience to prepare the next generation of citizens.



Youth & Schools

Minneapolis Board of Education approves resolution to place property tax referendum renewal on Nov. 8 ballot

The Minneapolis Board of Education has approved a resolution asking voters to renew an existing property tax referendum of \$1,604.31 per student. The renewal decision will go to Minneapolis voters on Nov. 8.

The current property tax referendum, which generates 13 percent of Minneapolis Public Schools’ (MPS’) 2016-17 budget, will expire this year. If approved by voters, the renewal will extend the funding for nine years. Property taxes for most Minneapolis homeowners are not projected to increase if the referendum passes.

MPS relies on referendum resources to manage class sizes and provide supportive services and activities for students. This year, referendum revenue is funding more than 750 positions, including 591 classroom teachers, 82 academic and behavioral specialists and 81 teachers and support staff for English learners.

It also funds math, science and literacy curriculum and materials as well as classroom technology. MPS is committed to using referendum funding to impact student achievement. Resources and information, including the official ballot language, property tax information and links to district budgets, are available at www.mpls.k12.mn.us/referendum2016.

Contact Information For Community Schools
Bryn Mawr Elementary (PreK-5)
252 Upton Avenue South
612-668-2500
brynmawr.Minneapolis.k12.mn.us
Minneapolis Kids School-age Childcare (at Bryn Mawr School)
612-668-3890
mplskids.Minneapolis.k12.mn.us/

Anwatin Middle School (6-8) International Baccalaureate and Spanish Dual Immersion
256 Upton Avenue South
612-668-2450
anwatin.Minneapolis.k12.mn.us
Anwatin Community Education
612-668-2470
www.mplscommunityed.com

City of Minneapolis Curfews

Age	Sun-Thurs	Fri-Sat
Under 12	9:00 pm	10:00 pm
12-14	10:00 pm	11:00 pm
15-17	11:00 pm	12:00 pm

City of Minneapolis

POLICE DEPT



Curfew: It's the law!

For the safety, protection, and health of our youth, curfew hours are important to abide by.

Youth are the #1 victims of crime.



1200 Glenwood Ave. N.
Minneapolis, MN

612-377-4900

www.northwesterntire.net

ROTATE & BALANCE

\$25⁰⁰

Most vehicles. Must present coupon. Cannot be combined with other offers. Plus tax, shop supplies & environmental fees. Expires 12/1/16.

BATTERY SALE

\$10⁰⁰ OFF

Most vehicles. Must present coupon. Cannot be combined with other offers. Plus tax, shop supplies & environmental fees. Expires 12/1/16.

FALL CARE CARE PACKAGE

\$46⁹⁵

Most vehicles. Must present coupon. Cannot be combined with other offers. Plus tax, shop supplies & environmental fees. Expires 12/1/16.

We Sell ALL Brands of Tires

Service Special

\$10⁰⁰ OFF Any Service Over \$100
\$20⁰⁰ OFF Any Service Over \$200
\$50⁰⁰ OFF Any Service Over \$500

Most vehicles. Must present coupon. Cannot be combined with other offers. Plus tax, shop supplies & environmental fees. Expires 12/1/16.

We Repair All Vehicle Types

Stop in for a FREE estimate

Events and Activities at Sumner Library

Sumner Library
611 Van White Memorial Blvd.
Minneapolis, MN 55411

One Day Events

Register at www.hclib.org
Master Gardener: Care of Houseplants
November 12, 2016
10:00 AM – 11:30 AM
Learn the basics of lighting, temperature, humidity and regular maintenance for keeping indoor plants healthy for many years. Discover the different needs and problems common to houseplants. Collaborator: Hennepin County Master Gardeners, University of Minnesota Extension.

Understanding Pet Language
November 18, 2016
3:30 PM – 4:30 PM
Grades 4-5. Learn about the many ways animals communicate in a hands-on presentation, then use what you learned to speak pet with a real pet! Sponsor: Friends of Sumner Library. Collaborator: The Animal Humane Society.

20-Minute Résumé Assistance
November 22, 2016
10:00 AM – 12:00 PM
In your 20-minute appointment, a certified professional résumé writer will work with you to make your résumé the best it can be. The appointment will also include an

overview of interview questions. Bring a printed copy of your résumé. Collaborator: Jewish Family and Children's Service of Minneapolis.

On-going Events

Family Storytime
Thursdays
5:00 PM – 5:30 PM
For children of all ages and their parent or caregiver. Talk, sing, read, write and play together in a format appropriate for young children. Share books, stories, rhymes, music and movement.

Adult Homework Help
Mondays and Thursdays
10:00 AM – 12:00 PM
Trained volunteer tutors will help adults with college homework assignments in any subject. Also open to adults working to improve their English, prepare for the GED, occupational, citizenship and driver's exams.

K-12 Homework Help
Mondays and Thursdays
3:00 PM – 6:00 PM
Free in-person tutoring for K-12 students. No advance sign-up needed. For more information, see www.hclib.org/homework. Sponsor: Friends of the Hennepin County Library.



Bryn Mawr Moms on the Search for Good Books & Food

Costa Blanca Bistro
2416 Central Ave NE

Hector Ruiz, whose family is from Morelos, Mexico, has just opened his fifth restaurant in Minneapolis, Costa Blanca Bistro. His others include Café Ena, La Fresca, Rincon 38, and La Ceiba (now closed.) He also owned El Mason, which closed in 2012. We reviewed La Ceiba last year, and loved it, but Costa Blanca Bistro might take over as our favorite.

Located in a small space on a crowded strip on Central, it was hard to get between tables, but our server was great and she managed to maneuver her way around. She knew her wines and cocktails, and gave good advice on ordering small plates to share.

Tapas are made for sharing, and we racked up quite a bill ordering as many as we could! Fresh seafood

is a Ruiz specialty; we tried two seabass plates, seared scallops, and two dishes, a paella and a black ink pasta, that were chock full of shrimp, scallops, mussels, and calamari. Ruiz also uses spinach, Brussels sprouts and leeks in most creative ways. Garlic cream and saffron butter sauces make it difficult to give up the plate before licking it clean. We wanted to try more of the choices, but couldn't eat anymore! We all agreed that a second trip is needed.

Our cocktails and wine were excellent—we topped off the evening with flan, key lime pie, and churros. One of our only complaints is that there was no gluten free chocolate option.

Central Avenue has gained a go-to restaurant-we will be back!

What the Moms are reading now:
Echo, by Pam Munoz Ryan

www.hclib.org



COME AND JOIN US

We offer:

- ❖ **Diverse student body** that helps students learn and work in a real world setting
- ❖ **World Languages:** We are proud to offer French, Spanish and Japanese
- ❖ **Project SUCCESS** meets with students monthly in Language and Literature classrooms
- ❖ **AVID** is a college preparatory program in which students become the facilitator of their own academic success
- ❖ **Spanish Model UN** for Spanish Dual Immersion students
- ❖ **Academic support** taught by core teachers
- ❖ **Business partnership** with RBC Wealth Management that includes college scholarships, funding for creative teacher ideas, and paid field trips for students
- ❖ **Sports Clubs and Beacons** programs and activities.
- ❖ **Athletics:**
Fall: Volleyball and Flag Football
Winter: Boys Basketball and Girls Basketball
Spring: Boys Baseball and Girls Fast Pitch Softball

Family Involvement Is A Priority.

We have a parent liaison who is available to address questions for parents / guardians.

E-mail: Daniel.Burgos@mpls.k12.mn.us
Office Phone: 612.668.2478

Anwatin has been an International Baccalaureate World School since 2010

The IB Middle Years Programme is a challenging framework that encourages students to make practical connections between their studies and the real world. The MYP is inclusive by design; students of all interests and academic abilities can benefit from their participation.

Students at Anwatin will:

- ❖ be encouraged to think independently and drive their own learning
- ❖ become more culturally aware, through the development of a second language
- ❖ be able to engage with people in an increasingly globalized, rapidly changing world
- ❖

We teach in teams by grade level.


Each grade level meets once a week to discuss team issues and individual student concerns.

Our behavior support specialists are "one team" because we believe that positive relationships are critical to success at this age.


Anwatin Middle School
256 Upton Avenue South
Minneapolis, MN 55405
Phone: 612.668.2450


<http://anwatin.mpls.k12.mn.us/>



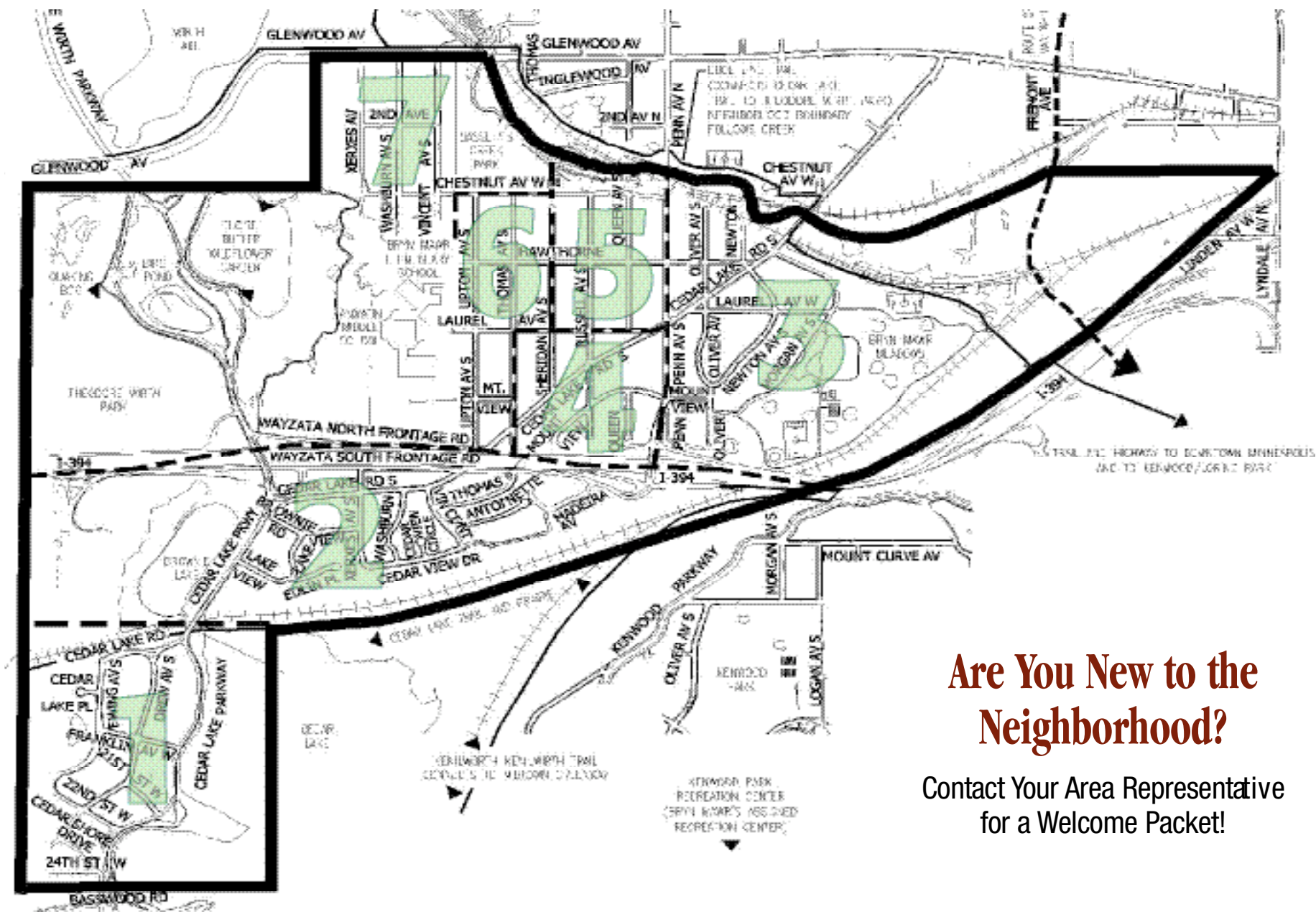


Anwatin Middle School





Let us help you navigate through middle school



Are You New to the Neighborhood?

Contact Your Area Representative
for a Welcome Packet!

THE BRYN MAWR NEIGHBORHOOD ASSOCIATION

2915 Wayzata Bouleva rd, Minneapolis, MN 55405

BMNA Board Members

President:
Kevin Thompson, president@bmna.org 612-296-5409

Vice President:
Jessica Wiley, vicepresident@bmna.org 612-374-3481

Treasurer:
Dennis Fazio, treasurer@bmna.org 612-910-6611

Secretary:
JD Dietrich, secretary@bmna.org

CPP Coordinator:
Nick Cichowicz, cpp-coordinator@bmna.org

Area Representatives

1 Greg Froehle, greg.froehle@bmna.org 612-926-2882
Dave Holets, dave.holets@bmna.org 612-922-8274

2 Lynda Shaheen, lynda.shaheen@bmna.org 612-374-4201
Susan Verrett, susan.verrett@bmna.org 612-377-7447

3 Dennie Juillerat, dennie.juillerat@bmna.org 612-850-5658

4 Christopher Etz, christopher.etz@bmna.org 612-378-2987
Joanne Michalec, joanne.michalec@bmna.org 612-377-3348

5 Brian Treece, brian.treece@bmna.org 763-229-3663
Beth Turnbull, beth.turnbull@bmna.org 612-423-3033

6 Vida Ditter, vida.ditter@bmna.org 612-374-1481
Jay Peterson, jay.peterson@bmna.org 612-377-4677
Barry Schade, barry.schade@bmna.org 612-203-1758

7 Steve Harvey, steve.harvey@bmna.org 612-374-3613

Bugle Corps

Editor
JoEllyn B. Jolstad 612-377-8968
bugle@bmna.org

Neighborhood Coordinator
Patty Wycoff 612-239-1710
coordinator@bmna.org

Police Liaison CCP/SAFE
Rowena Holmes 612-673-2833
Rowena.Holmes@minneapolismn.gov

Advertising
Deryck Jolstad 612-377-8968
advertising@bmna.org

Subscriptions
Kate Olson 612-810-6402
subscriptions@bmna.org

Mailing Address
2915 Wayzata Blvd.
Minneapolis, MN 55405-2145

Phone
612-767-1876

Drop Off Box
Bryn Mawr Market,
behind the counter

Web Site
bmna.org
Jeremy Staffeld
webmaster@bmna.org



Want Ads

Rates: \$4.50 minimum (4 lines, approx. 40 characters per line), \$.50 per additional line. **FREE** ads for lost, found, free items, pets & youth ads.
Due Date: 20th of preceding month. **Instructions:** No ads over the phone please or accepted without payment. Drop off in the Bugle Box at the Bryn Mawr Market or email bugle@bmna.org.

Be sure to check references, State Agencies, BBB, etc. and inquire about bonding when using any new service.

SERVICES

CLEANING SERVICE: Organized, efficient and reliable. 18 years experience. References on request. Call 612-803-1374.

CONCRETE/BRICK/STONE/MASONRY: Repair or New - foundations, driveways, sidewalks & steps, garage slabs, also kitchens & bathrooms. Call Gary 651-423-6666.

SNOW REMOVAL, LAWN CARE, TREE & SHRUB TRIMMING: Premier Lawn & Snow, Inc. providing reliable snow removal/lawn care, tree and shrub trimming with quality results for SW Minneapolis since 1987. For prompt estimate call Dennis (952) 545-8055.

VOLUNTEER OPPORTUNITIES

Volunteer opportunity in the neighborhood
Bryn Mawr Presbyterian Church in partnership with Sheridan Story provides weekend food bags for about 100 children at Bryn Mawr School. Weekends are a tough time when kids go without the breakfast and

lunch the school provides. We need volunteers who follow a list of locker numbers and insert the pre packed food bags in children's backpacks. No experience necessary and you will always be working with someone who has experience. The event happens every Friday at 11:30 at Bryn Mawr School. Time commitment is one hour and you may sign up just once or as many times as you want. More information and the sign can be found here:
<http://www.signupgenius.com/go/8050b4cacab28a02-201617>

Volunteer tutors are needed to teach Adult ESL & GED classes one day per week at Summer Library. No previous experience necessary; full training provided. Must be able to commit to a 3 month period. For more information, please call John Ashby at 612-377-5399 or jashby@mnliteracy.org

YOUTH SERVICES

Hi, my name is Gabe Engel and I am 14 years old. I am available to feed your cat/water plants while you are out of town, mow your lawn (I bought an electric mower with my own money) or babysit. Please call me if you need any of these things. 612-990-1738.

COORDINATOR CORNER

My name is Patty Wycoff and I am the
Bryn Mawr Neighborhood Association Coordinator.
Feel free to contact me at
coordinator@bmna.org or 612-239-1710.

If you are not part of our e-mail list, please sign up at www.bmna.org.

Bugle also available at www.bmna.org

A reminder that in addition to being delivered to your doorstep, the Bryn Mawr Bugle is available online at bmna.org. Click on the Bugle logo on the home page to read the current edition or go under the 'Bugle' tab to see past editions and to learn more about advertising rates and submission deadlines.

Questions about placing an ad or submitting a story? Email bugle@bmna.org.

The Bryn Mawr Bugle is an open-for-run newspaper published by the Bryn Mawr Neighborhood Association. Content is based entirely on volunteer submissions which may be emailed to bugle@bmna.org. Articles and letters to the editor will be printed at the discretion of the Editor. The Bryn Mawr Bugle is published every month except January. Distribution is free to Bryn Mawr residents; copies are also available at the Bryn Mawr Market, Bryn Mawr Mobil and Cuppa Java. Subscriptions are \$21 per year. Opinion articles represent the opinion of the writer; not necessarily those of the Bryn Mawr Neighborhood Association or the Editor of the Bugle. The Bryn Mawr Bugle will print letters to the editor as space allows. Letters may be edited for length without altering the letter writer's message. Letters must be signed by the person who wrote them. Under the law, letter writers, like journalists, may not commit libel, be obscene, reveal names of juveniles accused of crime, invade personal space, or incite to riot.

Copy deadline for the November issue is **November 20!**

Display & Classified Ads are due November 20th. Ads must be pre-paid & camera ready.

Call Deryck Jolstad at (612) 377-8968 or djolstad@msn.com for rates.

GENERAL ADVERTISING POLICIES: All ad copy is subject to approval by the paper, which reserves the right to reject or request changes to an ad. Ad placement does not imply endorsement by the BMNA. The advertiser, not the paper, is responsible for the truthful content of the ad. Readers use service/product providers at their own risk and are solely responsible for checking references, state agencies, BBB, etc.