



BRYN MAWR BUGLE

Published by the Bryn Mawr Neighborhood Association

February 2017



Membership 2016 Recap

Well neighbors, we did it!
We exceeded our membership goal of \$12,000 by \$266! THANK YOU!

Here is some interesting information about the 2016 Membership Drive compiled by our fantastic, volunteer Treasurer, Dennis Fazio.

- 256 households in Bryn Mawr contributed to BMNA in 2016
- 41 people used Paypal link to contribute
- 215 sent a check
- contributions ranged between \$5 and \$250
- Area 6 had the most households donate with 51 contributions (Area 2 a close 2nd with 49)

You should be receiving your 2017 BMNA Membership Drive information in the mail in February. It will include a letter from our President, Kevin Thompson and have all of the highlights of BMNA from 2016. We are hoping to increase the number of households contributing. We have 1400+ households in Bryn Mawr and would love to have at least a 10% increase. We look forward to your continued support in 2017. *Contributions to BMNA are tax-deductible.

- Patty Wycoff, Neighborhood Coordinator

Saturnalia 2016

The snow began to fly an hour before Saturnalia began. This wonderful annual event has a little something for everyone. It began with the drummers from Drumheart, roasting of marshmallows and the arrival of Santa Claus. The event ended with a horse drawn sleigh ride around the neighborhood. This is an event for all ages. Later in the evening, there was an adults only party at Cuppa Java with live music and libations.

Saturnalia is one of our many free events. It is organized and sponsored by the Bryn Mawr Neighborhood Association. Our generous businesses also contribute to the success of this event. Thank you Bryn Mawr Market for supplying all of the marshmallows. Thank you Cuppa Java for supplying free hot cocoa with whipped cream. Thank you Cockadoodledoo for organizing firewood/firepits and Santa's bench. Thank you Bryn Mawr Bobby and Steve's Auto World for supplying the firewood for fire pits. This is one of those, "it takes a village" kind of events. We hope that all who were able to attend enjoyed themselves.

Patty Wycoff,
Neighborhood Coordinator



I-94 Preservation Project

This summer will be a rough one for Bryn Mawr residents who frequently depend upon the north-south segment of I-94 and the Lowry Tunnel. Starting in March 2017, MNDOT will begin a major restoration project on the section of I-94 between Nicollet Ave and Shingle Creek Parkway (see map). Work should be substantially completed by November (depending on weather or other unforeseen delays) with the exception of some ramp work that will be done in early 2018. This will be a resurfacing overlay of bituminous over the existing concrete roadbed.

The highway has been subject to heavier traffic loads (now 140,000 vehicles/day) and, of course, winter weather conditions over the past 35 years of its existence. This \$50 million preservation work will cover the needs of the roadway for about 8 more years, at which point funding will be needed for an even larger full removal and replacement project.

Repairs include:

- Resurfacing about nine miles of pavement on I-94 between Nicollet Ave. in Minneapolis and Shingle Creek Prkwy in Brooklyn Center
- Repairing and resurfacing multiple entrance/exit ramps
- Repairing 50 bridges on or over I-94
- Reconstructing westbound I-94 bridge deck over Hwy 252 in Brooklyn Center

- Repairing tile in (I-94) Lowry and Portland Avenue tunnels
- Replacing guardrail
- Improving drainage and concrete barrier in areas

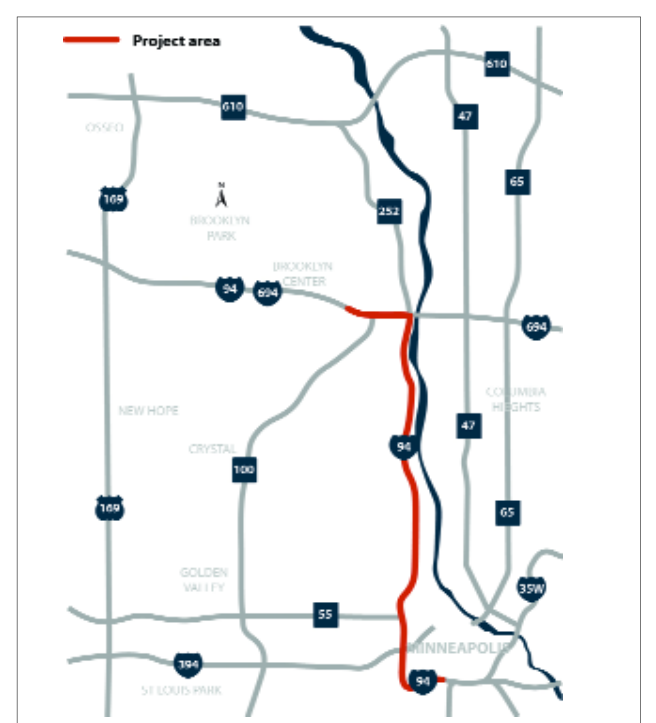
This work will require lane restrictions and closing from about April to November, if things stay on schedule. Traffic staging is currently in development. Specific information about road, bridge and ramp closures will be posted as it becomes available.

Likely impacts include:

- Weekend closures of I-94 (some will be needed)
- Short-term and long-term bridge and ramp closures
- Periodic, off-peak lane closures on I-94
- Reduction to two lanes both directions from May to August
- One side of the Lowry Hill Tunnel will be closed from May to August and the speed limit will be reduced to 30 mph
- All trucks will be prohibited from the Lowry Hill Tunnel
- One side of I-94 will be closed for four weeks in August
- Hwy 252 south will be closed for up to three months at the I-94 bridge\

To add a small bright side, there will be some benefits to the community. These include:

- Prolonging of the life of the pavement on I-94
- Provision for a smoother road



- Reduction in wear and tear on vehicles
- Reduction in vehicle operating costs
- Creation of job opportunities as construction gets underway
- Creation of business opportunities for food trucks and retail kiosks to serve temporarily parked cars along eastbound I-394 from Penn Ave back to, probably, Louisiana Ave or further.

Further details are available on the project page: <http://www.dot.state.mn.us/metro/projects/i94brooklyncntr/>



BRYN MAWR NEIGHBORHOOD ASSOCIATION

Board Meeting Minutes

Wednesday, December 14, 2016

6:30– 8:15 PM

Bryn Mawr Elementary (Cafeteria)

Attendees:

Kevin Thompson – President
Jessica Wiley – Vice President
James Dietrich – Secretary
Dennis Fazio – Treasurer
Jeremy Staffeld - Webmaster
JoEllyn Jolstad – Bryn Mawr Bugle
Patty Wycoff – Neighborhood Coordinator
Lisa Goodman – City Councilperson
Susan Verrett – Area 2 Co-Rep
Dennie Juillerat – Area 3 Rep
Beth Turnbull – Area 5 Co-Rep
Brian Treece- Area 5 Co-Rep
Barry Schade – Area 6 Co-Rep
Joanne Michalec – Area 4
Teri Stark – Area 4
Matt Stark – Area 4

A quorum was present.

Call to order at 6:34pm.

Approval of Agenda and Minutes

Kevin Thompson moved to approve the agenda. Seconded. Motion carried.

Jessica Wiley requested to amend last month’s minutes to reflect that BMNA purchased a speed sign as part of a 2016 community project. Kevin Thompson moved to approve the Minutes as amended. Seconded. Motion carried.

City of Minneapolis Report

Lisa Goodman gave the City of Minneapolis report. Lunch with Lisa resumes on the 25th of January. This month’s topic is public art and its importance. The City’s Public Art Director will talk on city-wide public art. Minneapolis sets aside 2% of the budget for public works projects for public art installations.

The city’s new public works director Robin Hutcheson lives in Bryn Mawr. Lisa discussed a public art installation to slow down traffic on Cedar Lake Road.

Lisa authored an amendment which passed to reallocate money from Selling the City program into public safety initiatives.

The City passed an amendment to fund a new small business navigation initiative. This will help small and medium business understand which permits and licenses are required. The City will add one position to handle small and medium sized business recruitment and retention and three positions to handle process navigation.

Lisa voted against the budget taking a stand under the belief that the truth in taxation <statement> was not truthful. Taxes are increasing by the average \$116/\$100K valuation city-wide.

Treasurer’s Report

Dennis Fazio reviewed the latest draft of the 2017 budget with changes from the November meeting.. Additional funds from NRP was added. To receive these funds, the Board needs a contract amendment to disclose what BMNA will do with the money. It also needs to put in the application for CPP for the next 3 years. A final review of planned expenses. Largest community project expense is Gardens, which is to be expected with 16 gardens to maintain as well as construction of a replacement for the gateway hedge on Penn.

BMNA plans to see a net negative income, and will draw approximately \$25K from reserves.

Patty Wycoff opened a discussion on financial support for Anwatin Middle School to improve a waiting area for children who arrive early to school. Patty is working with the building principal and Linda Shaheen at Anwatin to redesign this area. Patty will return to the Board once an estimate has been determined. BMNA is adding \$1000 to the school committee budget

Dennis Fazio moved for approval of the Budget as amended. Seconded. Motion Carried.

Crime and Safety

Kevin Thompson opened a discussion on Crime and Safety. After a break-in on Mt View, BMNA asked Lisa Goodman to look into Bryn Mawr’s crime rate and any recognizable pattern. Lt. Biard of Minneapolis responded there was no discernable pattern that is a cause for alarm. Historically, burglaries and crime rate in general has been low in Bryn Mawr. Detective Sgt. Buege added beat cops, mandatory foot patrols, and undercover officers have been deployed. Inspector Kjos added beat cops, mandatory foot patrols, and undercover officers have been deployed.

Discussion Items:

Penn and Mt View has seen some issues in the past, possibly because of proximity to the freeway and lower visibility because of the shrubbery and trees.

There was discussion on potentially adding information on Bryn Mawr criminal activity data to bmna.org, what information to add, and how to most effectively display data. Communications Committee will fine tune the content to display.

BMNA reminds neighbors to be vigilant and take steps to remove easy access.

Individuals can sign up to be a Block Leader to enjoy training actions and updates from the Minneapolis Police Dept.

Neighborhood watch signs and the results those signs produce. BMNA could make a request for a Minneapolis camera to be temporarily installed in the neighborhood. This has been done before for trouble spots.

BMNA has purchased a digital speed monitoring sign for use as a speed deterrent for the neighbor-

hood. This can be affixed to existing poles and moved around periodically to gather data on neighborhood speeding.

I-94 Preservation Project

Dennis Fazio reviewed the Preservation Project impacting I-94. I-94 between Nicollet Ave and Broadway, including 50 bridges and entrance/exit ramps will be resurfaced between March through November 2017.. Traffic will be restricted to 2 lanes, with alternate side closures and occasional full closures nights and weekends.

Neighborhood Coordinator Report- Patty Wycoff

BMNA had three events in November and December. The Harvest Dinner was an enjoyable event where almost 100 people gathered for food and general conversation. The Craft Fair had 24 crafters, mostly student lead organizations making items to raise money for a cause. Saturnalia event was a success, despite the snow. Bryn Mawr business offered shopping discounts and went all out in decorating, making it an enjoyable event for dozens of people. Activities included hay wagon rides and roasting marshmallows.

Bugle Report - JoEllyn Jolstad

There will be no Bugle in January. Patty will write an article for February and Jessica will write an article for the March issue.

Webmaster Report - Jeremy Staffeld

The safety page should be up shortly for review and discussion. November had almost 6000 visitors. Two days before each event, BMNA.org receives a spike of traffic. An Events page will be reinstated that provides more details on all the events that occur in Bryn Mawr.

Committee Reports

Schools Committee will be meeting at the end of January. Anwatin is working on creating “nesting” spaces for students and the school committee is supporting that work.

Garden Committee would like to thank the board for approving the budget. The Garden Committee consists of: Allison Reece, Beth Franzen, Beth Fairley, Buddy Scroggins, Colleen Smith, Charles Salmen, Dennie Juillerat, Dennis Fazio, Ed Juda, Mark Smith, Jan Wagner, Joe Wagner, John Davenport, Jerry Krause, Kathy Ripke, Kathy Kerber, Matt Pequignot, Tom Mckusick, Megan Tam, Michael Brennen, Nadine Thiel, Patty Wycoff, Paul Linnenbach, Rachel Banken, Rod Miller, Scott McLaughlin, Sarah Hernandez, Cathy Skalicky, Steve Jensen, Tiziana Cervesato, Nicolas Tiziou. The entire Garden Committee received a Thank You from Teri Stark to the BMNA Garden Committee for the hard work and beautiful results.

Community Projects reminded the board that notice to submit application for community projects was in the Bugle. Proposals are due March 1st.

Events - Patty Wycoff will head up an Art Fair Committee which will consist of volunteers. Kevin Thompson and James Dietrich volunteered.

CPP/NRP Update - Dennis Fazio

The CPP coordinator needs to schedule a committee meeting to complete the application for 2017-2019 and the NRP contract amendment. BMNA will be well represented at the upcoming meeting on future of neighborhood organizations.

BCV Redevelopment Update

Kevin Thompson gave an update on ROC. 241 Fremont has gone under contract and adjacent city owned parcels are open to receiving proposals to redevelop. South of 394, the Target building signage is gone, but there is no information on the status of the building so far.

The Bryn Mawr neighborhood will have two stations in the upcoming LRT extension to Eden Prairie. The current stations are Bryn Mawr Station and Bassett Creek Valley station.

Parks and Recreation

Patty Wycoff stated that Bryn Mawr Meadows and Bassett Creek parks are being included in the MPRB’s Northside plan. Discussions taking place next week.

V3 Sports, which is a non-profit organizations led by a former executive of the McKnight Foundation is looking to build a \$40M Triathlete training and competition facility on the city owned vacant lot north of International Market Square.

Meeting adjourned at 7:59 p.m.
NEXT BOARD MEETING:
Wednesday, January 11, 2017
6:30 p.m., Bryn Mawr Elementary Cafeteria

BRYN MAWR NEIGHBORHOOD ASSOCIATION

Board Meeting Minutes

Wednesday, January 11, 2017

Bryn Mawr Elementary (Cafeteria)

Attendees:

Jessica Wiley – Vice President
Dennis Fazio – Treasurer
James Dietrich – Secretary
Georgia Cady – Area 3
Joanne Michalec – Area 4
Brian Treece – Area 5 Co-Rep
Beth Turnbull – Area 5 Co-Rep
Jay Peterson – Area 6 Co-Rep
Barry Schade – Area 6 Co-Rep
Steve Harvey – Area 7 Rep
JoEllyn Jolstad – Bryn Mawr Bugle
Patty Wycoff – Neighborhood Coordinator
Lisa Goodman – City Councilperson

Guests:

Adam Arvidson, Director of Strategic Planning, Minneapolis Park Board
Ramon Villanueva
Catherine Villanueva

A quorum was present.



If the great trees of
Bryn Mawr could talk, I bet
they could easily pronounce
“Kal-itow-ski.”

Jim Kalitowski
REALTOR


He's been around your block.



Each office independently owned and operated

612-867-6703
jimkalitowski@remax.net

©1996 James Kalitowski, Realtor.



Recycling
www.ci.minneapolis.mn.us
/solid-waste
(612) 673-2917

Bryn Mawr Recycling Schedule

	Monday	Tuesday	Wednesday
Area 1	February 13 February 27		
Areas 4W, 5W, 6, 7	February 6 February 20		
Areas 2, 3, 4E, 5E		February 7 February 21	
Use it up, wear it out, make it do, do without. Recycle.			



Milda's Café
Established in 1965
Breakfast All Day!

Try Our Traditional Pasty
NEW: Country Fried Steak & Eggs Benedict

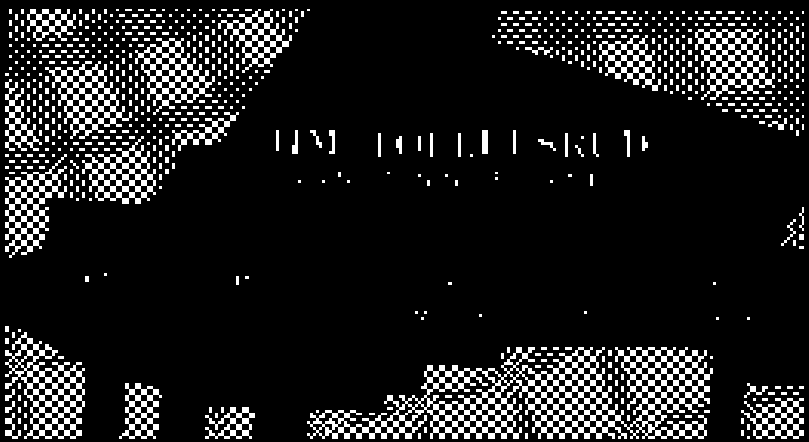
Takeout Available
Open Monday - Friday 6am to 3pm
Saturday and Sunday 8am to 2pm

612-377-9460 • 1720 Glenwood Ave, Minneapolis

What are you doing this weekend? Why not go DANCING!
LIVE music is more FUN!



www.percolatorsband.com
Check our website & come see us. We'll rock your socks off!
Hans Gasterland, drums. Call today: 612-723-5038





MILL CITY DENTAL
JAY WILLIAMS, D.D.S.

612-377-3740

2218 LAUREL AVENUE • MINNEAPOLIS, MN 55405



From the Editor

This month brings exciting news to the Bugle. After much anticipation, Utepils Brewing has set a tentative date for the grand opening of their tap room. Utepils is occupying part of the old Glenwood Springs campus. The company was formerly known as Bryn Mawr Brewing until a copyright challenge from a company in Bryn Mawr PA prompted a change.

When I spoke with President Dan Justesen, he told me that they still need to have their final inspection from the city for a certificate of occupancy and the landlord needs to put in a phone line. If these both happen this week, there will be a series of soft openings, including one for neighbors! Even if you do not partake of their unique brews, there will be fresh Glenwood spring water and other non-alcoholic offerings on tap.

When that date is announced, the BMNA will try to be lightning fast with their electronic communications. Hopefully, we will have a fun follow-up article in the March Bugle, with lots of Bryn Mawr folks enjoying this unique new addition.

They plan to be open to the public on Saturday, February 18, pending city approval. In the meantime, there is a multi-keg release party on Thursday, February 9. Details can be found on the Utepils Brewing Facebook page. <https://www.facebook.com/Utepils.Brewing/>

In other beverage news, Bryn Mawr neighbor Gretchen Skedsvold has a Wine Notes column. She and her husband Mark are the owners of Henry and Son, a (mostly) wine and select spirits shop. If you are a regular reader of the BMNA meeting minutes, you may recall that they had proposed putting their shop in the corner storefront that is now occupied by Uptown Plumbing. Sadly, the space was not properly zoned for such use but there were able to settle in nearby on Glenwood and Aldrich.

I went over to a tasting at the shop in December. I ended up purchasing several gifts and a few bottles from the “value” shelf for home. The staff was very knowledgeable about each selection. Unlike me, who is often an attractive label/fun name wine shopper!

I am looking forward to learning more about their passion and understanding of wine and food pairings. With our daughter graduating, this soon-to-be empty-nester, needs to get her party hostess groove back.

-JoEllyn Jolstad, bugle@bmna.org

NORTH END HARDWARE



EXCEPTIONAL SERVICE

Winter is here!

Bring your snow blower in for service and maintenance. Pick up and delivery available. Give us a call.



TORO • SNAPPER • LAWN BOY
SNOW BLOWER / LAWN MOWER SALES & SERVICE
NORTH END HARDWARE & RENTAL
at PENN & LOWRY
Darryl Weivoda, Owner
(612) 529-9151 Northendhdwr@aol.com



Wine Notes

To Wine, With Love:

To some you are a status symbol, to others you are intimidating, an enigma, a multitude of regions, grapes, winemakers, labels, foreign names and unintelligible symbols. Jargon. To some you are a pretty label, to others a cheap delicious guilty pleasure.

Napoleon famously said of you (in the form of champagne): “In victory you deserve [it], in defeat you need [it].” Coco Chanel quipped (also of champagne): “I drink [it] when I am in love and when I am not.”

To me, you have been all these things. Moreover, you are memories.

In my childhood you were Thanksgiving White Zinfandel sipped by my paternal grandmother out of a tiny glass she refilled over and over again. You were always there at dinner with my maternal grandparents, sometimes from Australia, sometimes from France or Italy and the times you were from Chile my grandpa marveled at the fact there was good wine being made in South America. “Concha y Toro” he’d pronounce in his best Spanish accent. You were that extra glass my grandpa poured my grandma despite her adamant protests (though she always drank you).

During college you were a \$10 magnum of Chilean red but on special occasions like a date at the chain fondue restaurant you were a \$30 Petite Sirah from California.

Fresh out of college you were Chilean Carménère and Argentine Malbec from my neighborhood grocery store in Rio de Janeiro and every so often a Brazilian red from Rio Grande do Sul. At my first wedding you were sparkling wine from the Argentine outpost of a great (French) Champagne house. On my honeymoon to Chile I tried you at the source: the Concha y Toro winery. On business trips to Mexico City I found you at the corner store in dusty bottles of Mexican Nebbiolo from Baja California.

I aspired to you in the form of expensive champagne and Bordeaux and Burgundy in business school. But it was also there I was first introduced to your history, economics, politics and your natural side. And my eyes were slowly opened to the idea that wine, like food as Michael Pollan, inspired by Wendell Berry’s statement “eating is an agricultural act” realized: drinking, too, is a political act.

You consoled me through divorce and a short-lived stint on Wall Street at the beginning of the Great Recession. You gave me the courage (perhaps a bit too much) to approach my husband at a New Year’s party. And at our wedding you were bottles of affordable red, white and rosé carefully selected by the shop down the street from our Brooklyn apartment (and the dive bar where we held our wedding reception).

I have encountered you around the world. I’ve consumed you in beachside cantinas in Greece and Sicily next to plates mounded with tiny fried whole fish. I’ve discovered you in a dimly lit shop in Paris stacked to the ceiling with boxes, poured by the hand of the gracious lady who made you. We (my husband and I) bought a half dozen bottles and carried them home in our suitcases. Little did we know at the time we’d one day open a wine shop.

So to you, wine, I raise my glass and say, “here’s to our memories, to everything you’ve taught me and to everything I have yet to learn. Thank you.”

With love, Gretchen

Do you have questions or your own stories about wine? Wondering what red wines pair well with lamb curry? Have a friend or relative who refuses to drink white wine and you need a bottle to convert them? Write us at emailhenryandson@gmail.com and we’ll respond each month in this column.

- Gretchen Skedsvold & Mark Henry, Area 4 Co-proprietors, of Henry & Son

BRYN MAWR ALMANAC



- February 4, 2012

Five or six wild turkeys in the ditch along Highway 55.
- February 5, 2006

One of the first City of Lakes Loppet cross-country ski races, from Wirth Golf Chalet to Uptown. On a perfect bright blue sky day, Anwatin and Bryn Mawr Elementary students serving water, cookies, and orange slices to the skiers behind their schools. This event has now partnered with the St. Paul Winter Carnival and the National Pond Hockey tournament to celebrate being outdoors in our winter.
- February 10, 2017

Full moon, the Ojibwe crust of snow moon.
- February 11, 2014

Last of 17 consecutive below-zero nights in an “old fashioned” cold winter (42 such nights so far).
- February 15, 2003

Two crows chasing away a red-tailed hawk. Why?

Thinking of buying or selling
a home in 2017?
Katie can help, call Today!

Experienced In Saving You Money
Katie Johnstone, REALTOR®
612.889.3237
katie.johnstone@results.net



RE/MAX Results



Bryn Mawr Soap

On sale at Bryn Mawr Market
and Twin Cities area co-ops

www.brynmawrsoap.com

612-374-3613

For news you can use, visit the **NEW**
www.bmna.org.



**1200 Glenwood Ave. N.
Minneapolis, MN**

612-377-4900

www.northwesterntire.net

RADIATOR FLUSH

\$79⁹⁵
+ antifreeze

Most vehicles. Must present coupon. Cannot be combined with other offers.
Plus tax, shop supplies & environmental fees. Expires 3/1/17.

BATTERY SALE

\$10⁰⁰ OFF

Most vehicles. Must present coupon. Cannot be combined with other offers.
Plus tax, shop supplies & environmental fees. Expires 3/1/17.

WINTER CAR CARE PACKAGE

\$46⁹⁵

Most vehicles. Must present coupon. Cannot be combined with other offers.
Plus tax, shop supplies & environmental fees. Expires 3/1/17.

**We Sell ALL
Brands of
Tires**

Service Special

\$10⁰⁰ OFF Any Service Over \$100
\$20⁰⁰ OFF Any Service Over \$200
\$50⁰⁰ OFF Any Service Over \$500

Most vehicles. Must present coupon. Cannot be combined with other offers.
Plus tax, shop supplies & environmental fees. Expires 3/1/17.

**We Repair All
Vehicle Types**

**Stop in for a
FREE estimate**

BMNA Yearly Community Project

Got a good idea?

The BMNA Community Project program has been in place for the last ten years. Each year we ask neighbors to suggest projects that improve livability and safety in Bryn Mawr. Some projects from past years include:

- Construction of a Little Library on Penn Avenue in front of Bassett Creek Arts.
- Buckthorn removal in Chestnut Park/Fruen Mill area over a period of three years
- Construction of a bench at Brownie Lake
- Bee Hotels at JD Rivers Children's Garden

Successful projects have a leader who is willing to carry out the work needed to finish the undertaking.

How to participate:

The Community Project Committee will take suggestions and create a prioritized list, making a recommendation to the BMNA board in the spring. Committee members include:

Steve Harvey, Area 7; Jay Peterson, Area 6; Joanne Michalec, Area 4; Jessica Wiley, Area 3; Susan Verrett, Area 2; and Patty Wycoff, Neighborhood Coordinator

The categories of projects considered:

- Environmental (e.g. Ash Tree identification, buckthorn removal)
- Energy (e.g. Energy Challenge project)
- Downtown (e.g. Banner project)
- Transportation
- Community (e.g. Upton Garden Redesign, historical murals)

The committee evaluates suggestions using criteria including:

Is it possible (politically, physically)?
Does it meet the budget (\$0-5000)?
Is it sustainable long term?
Does it have neighborhood wide impact?
Is there leadership (an identified neighbor) to get the project done?

We will review ideas from past years and add new ideas contributed this winter. Please submit ideas for projects to jessicasusanwiley@gmail.com, or 612-374-3481, by March 3, 2017.

Community Project 2016—Bee Hotels

Bryn Mawr resident Michael Dickson completed his project for his Eagle Scout Rank last fall. Michael, a member of Boy Scout Troop 268, was looking for a project that would help his local community. Theodore Wirth Park is one of his favorite outdoor spaces for hiking, so he contacted the Theodore Wirth Park Environmental Stewardship Volunteer Coordinator. The volunteer suggested a few different environmental projects that would benefit the park; one of them was building bee hotels.

Michael, aware that bee populations are diminishing, discovered that the hotels help by giving solitary nesting bees shelter. Bees are extremely important pollinators and are essential for the ecosystem of our area. These insects have been losing sheltering locations due to urbanization and pollution. We are already in a bee crisis where these valuable insects are dying at unprecedented rates. His project will not only help the dying bee population, but raise awareness for solitary nesting bees. Last April the BMNA Board approved \$500 to support Michael's project through the Community Projects program.

The hotels are wooden structures about six feet tall and three feet wide. They have three shelves to put natural materials on to simulate the



environments that these insects will shelter in. The structures ended up in three different local Minneapolis parks including Loring Park, Lyndale Park Gardens, and the JD Rivers Children's Garden.

Michael's completed structures will be filled with natural materials for nesting like in the bee hotel below.



Minneapolis Audubon Society Monthly Events

Friday, February 10, 2017, 1:00 p.m.

A MILLENNIAL'S GUIDE TO BIRDING - Bob Dunlap, Zoologist/Data Specialist at Minnesota Department of Natural Resources
Join the Minneapolis Audubon Society for food and fun at the Bryant Square Neighborhood Center, 31st & Bryant Avenue S, just one block south of Lake Street, easily accessible via the #4 bus, which runs every 15 minutes! For more information call 763-533-8381.

Bryn Mawr Neighborhood Association Calendar - February 2017

*All meetings are open - everyone is welcome. Neighbors are urged to attend and participate in meetings and activities of special interest to them.
Bryn Mawr Neighborhood Association and its committees meet at Bryn Mawr Elementary School during the school year, unless otherwise noted.*

Sunday	Monday	Tuesday	Wednesday	Thursday	Friday	Saturday
			1 Family Open Gym, 6-8 PM, Bryn Mawr Elementary big and little gym BMNA Schools Committee meeting, 7 PM, Rm 136	2 Feb. 3-5 City of Lakes Loppet Festival - Wirth Park and Uptown	3 Feb. 3-5 City of Lakes Loppet Festival - Wirth Park and Uptown	4 Feb. 3-5 City of Lakes Loppet Festival - Wirth Park and Uptown
5 Feb. 3-5 City of Lakes Loppet Festival - Wirth Park and Uptown	6	7	8 BMNA monthly meeting, 6:30 PM, Bryn Mawr Elementary cafeteria	9 Family Open Gym, 6-8 PM, Bryn Mawr Elementary big and little gym	10	11
12	13	14	15	16 Family Open Gym, 6-8 PM, Bryn Mawr Elementary big and little gym	17	18
19	20 Presidents Day Holiday	21 ROC meeting, 6 PM, Bryn Mawr Elementary cafeteria	22	23 Family Open Gym, 6-8 PM, Bryn Mawr Elementary big and little gym	24	25
26	27	28				

Utepils Brewing® Announces Grand Opening

European-style brewery opens to the public in February

It's pronounced "Ooh-ta-pilz" and it's a Norwegian word for the first beer enjoyed outdoors in the sunshine after a long, cold winter. While Minnesotans are still several weeks from that kind of Utepils moment, the thrill of warm sun and tasty beer is in the air at Utepils Brewery. The highly anticipated facility plans to open their Femweh Taproom to the public soon, with a grand opening February 18, 2017.

"I don't think I'll sit outdoors for that first beer when we open, but I might step outside for a sip or two. It depends on the weather," owner Dan Justesen says with a smile. When the brewery opens, it will probably feel like an Utepils moment for him. Remodeling of the building that contains the taproom, brewhouse, and business operations began in April 2016, following a first-of-its-kind public fundraising effort. The results are eye-popping: the day it opens, Utepils will be the sixth-largest brewhouse in the state. "Our plan was to build our brewhouse at a size that meets what we'll need in the future," explains Justesen. "We didn't want to be in a constant state of upgrading our brewhouse or our equipment. So we built the upgrade."

It worked. The upgrade is impressive. The brewing equipment, a maze of stainless steel pipes, mash and lauter tuns, a kettle, and six giant, two-story fermenting tanks was custom designed and imported from Bavaria. The tanks were purchased from a family that's spent three generations fabricating equipment for breweries. The brewhouse also boasts the first-ever North American installation of the energy-saving Vario Boil system—which helps cut their energy use by almost 75%. Award-winning brewmaster Eric Harper manages all of it using traditional skills, like smell and taste, as well as modern technology: his control center looks like the flight deck of a science-fiction spaceship.

Even the tile on the floor of the brewhouse was a subject of intense discussion among Utepils' partners. "After all the brewing equipment is

in place, you can't just go back and replace the floor," explains Justesen. "We wanted the best equipment we could buy on the best floor we could find, all to make the best beer we can." As a result, the floor tiles were imported from Bavaria as well.

The brewery and taproom have been designed to suggest an old European town, with many of the interior finishings sampled from Regensburg, Germany. One wall of the brewhouse is painted green in homage to the historic Wurstkuchl tavern in Regensburg, and eventually will have windows and doors added to complete the effect. The grain mill and delivery equipment is contained in a structure designed to look like the city's clock tower.

On opening day, Utepils will have all five of their European-style beers on tap for customers to enjoy: Pils Czech-style Pilsner, Alt 1848 Altbier, Glocal IPA, Ewald the Golden Hefeweizen, and Copacetic, a light blond Kölsch-style. The brewery also serves non-alcoholic drinks, and the Gastrotruck food truck will be on hand to feed hungry guests. Utepils also has an open-door policy for people to order food delivery to the taproom. "We want our guests to come in and hang out with us. Even if they just grab a glass of glacial spring water piped to our antique lauter grant," adds Justesen, referring to an impressive copper water feature near the entry, available for guests to fill water bottles or rinse out beer steins. The event will also feature live musical acts, including local favorites The Eddies.

There are still a few minor hurdles to clear but if all goes according to plan, the Grand Opening will be preceded by a series of soft opening events in early February. The surrounding neighborhoods will be included in one of these events. To get the latest updates, subscribe at www.utepilsbrewing.com or follow Utepils Brewing on Facebook and Next Door.

The brewery will be open starting Saturday, February 18, from noon to 11:00 PM. Regular operating hours will be noon until 10:00 PM Wednesday and Thursday, noon until 11:00 PM Friday and Saturday, and noon to 6:00 PM Sundays. A unique creek-side beer garden will open when the weather and the city permit, at which point enjoying an Utepils moment—a great beer in the sunshine with friends—will be easier than ever.



About Utepils Brewing

Nestled on the banks of Bassett Creek between Harrison and Bryn Mawr neighborhoods of northwest Minneapolis, Utepils' 18,000 square foot site features an iconic taproom and a full-scale craft brewery unlike any other.

We believe that good living comes from good brewing and that good brewing starts with honoring the traditions of brewers who have gone before us. Our beer is brewed using the highest quality water from the historic Glenwood Spring to produce beer that is classic yet uniquely distinct. Using tried and true brewing practices and the latest in

brewing technology, we seek to create a new tradition in the Twin Cities that brings friends and families together to share time and beer with one another.

Look for us wherever fine craft beer is sold or stop into our taproom to experience the way good beer was meant to be made.



SUPPORT THE BMNA!

We have some of the cheapest rates around!
Why don't you advertise in the Bugle?!!

Display Ad Rates	Page Size	Residents	Non Residents
Full Page	10"w X 16"h	\$260	\$300
Half page, horizontal	10"w X 7 7/8"h	\$135	\$155
Half page, vertical	4 7/8"w X 16"h	\$135	\$155
Quarter page, horizontal	10"w X 3 7/8"h	\$70	\$80
Quarter page, vertical	4 7/8"w X 7 7/8"h	\$70	\$80
Quarter page, 3-column	7 3/8"w X 5.25"h	\$70	\$80
Quarter page, 1-column	2 3/8"w X 16"h	\$70	\$80
3-column, 1/4 high	7 3/8"w X 3 7/8"h	\$50	\$65
Sixth-page vertical	4 7/8 x 6 3/8	\$50	\$65
Eighth page, horizontal	4 7/8"w X 3 7/8"h	\$35	\$45
Business Card, horizontal	4 7/8"w X 2 3/8"h	\$25	\$30
Business Card, vertical	2 3/8"w X 3 7/8"h	\$25	\$30
Inserts	8.5"w X 11"h	\$145	\$170

(Inserts must be printed by you, double or single-sided.)

Full-Color Now Available!

\$80 in addition to ad placement fee (above)

Classified Ad Rates:

\$4.50 minimum (4 lines, approx. 40 characters per line) \$.50 per additional line
No charge for youth and volunteer ads.

Ads are due the 20th of each month and should be camera-ready and paid in advance.
For more information contact Deryck (612-377-8968)
djolstad@msn.com



— **BMNA Meeting Minutes**
continued from page 2

Jessica Wiley called to Order at 6:33pm

Approval of Agenda and Minutes
With the addition of a presentation by the Park Board to the Agenda, Jay Peterson moved to approve Agenda. Seconded. Motion passed.

With no objections to December’s minutes as presented, the minutes were approved.

Councilmember Lisa Goodman’s Report

Minneapolis has declared a snow emergency currently in effect, primarily to remove snow from parking lanes before they freeze. To stay in the know and avoid being towed, use the Snow Emergency hotline, NextDoor, or sign up for notifications to received word about snow emergencies.
A community reminder that Christmas trees can still be picked up and recycled. Just put the tree next to your garbage. Also, Christmas lights can be recycled at the Hennepin County drop-off locations or visit recycleminnesota.org for locations.

Lunch with Lisa resumes January 25th. The topic is public art and will include a discussion of Nicollet Mall, a Q&A with new public art director, and the recap of the 2% holdback on public works projects. The event will be held at noon at St Thomas in Opus Hall, Room 202.

The City of Minneapolis launched an online survey about the upcoming changes to the Minneapolis Impound Lot. The changes include a reduction in overall footprint, new landscaping, and energy saving improvements. Construction will begin in the spring. To share your opinion, go to: www.surveymonkey.com/r/mpsImpound

Also, a community reminder to shovel your sidewalks to avoid frustrated neighbors and fines from the city.

The Prudential/Target building is still for sale. This building formerly housed over 1000 Target employees, who have since been relocated to

their corporate campus. Both Target and the City’s first choice is for a single entity to purchase and use as a Headquarters campus. Second choice would be to divide the building into multiple offices. The list price is \$14 Million.

MPRB
Guest Adam Arvidson with Minneapolis Park Board began a discussion on the future of neighborhood parks. The City is embarking on master plans for every neighborhood park the park system. This has not occurred since the 1960’s. There is a new funding agreement with the City adding significant additional funding over the next 20 years. The project will be completed in stages, broken out by the five Service Areas. They are starting with South Service Area, which includes everything south of downtown and east of 35W. Next will be Downtown, then the North Service Area, which includes everything north of 394, including Bryn Mawr and Harrison. Neighborhood parks such as the approved renovations for Chestnut Park and the recently renovated Laurel Triangle will be incorporated into the Master Plan.

Planning has already been completed for the South Service Area, which took about 2 years. Visioning for North Service Area is just kicking off with the community discussion and input gathering. The Park Board will create concepts for review and discussion. This will carry through 2017.

The Park Board is eliciting discussions and guidance from neighborhood community on neighborhood parks large and small. They will create a community advisory committee comprised of individuals appointed by Council members, the Park Board, and neighborhood associations. These individuals engage with the Park Board and eventually make recommendations on the acceptance of the plans. Applications for the advisory committee are now being accepted. The final list of Appointers must go to the Board for approval.

Proposed Development
As a courtesy to BMNA, Ramon Villanueva reviewed plans to purchase and develop a residence here in

Bryn Mawr. The Villanueva family wishes to buy several of the Stucki lots at the end of Vincent Ave N. and develop a single dwelling. Discussion around the previous attempts to develop these lots have met with challenges due mostly to the financial considerations of extending the Avenue, utilities, and sewer.

Treasurer’s Report
Dennis Fazio provided a detailed account of BMNA’s 2016 Income Statement. Expenses were generally lower than budgeted and income was approximately as expected, which resulted in a positive income for the Association. End of Year cash on hand was \$115,219.00

Neighborhood Coordinator Report- Patty Wycoff
New membership drive kicked off. Welcome Packets will be ready around the 1st of February. Membership contributions are critically needed to rebuild the Bryn Mawr hedge, an icon of the community.

Bryn Mawr Bugle Report -- JoEllyn Jolstad
There was no edition in January. The deadline for the February edition is January 20th. Patty Wycoff will write an article for February’s edition, Jessica Wiley will write an article for March’s edition. Susan Verrett will write an article for April, and Jay Peterson will write an article for May.

We may see a new column from the owners of Henry and Sons. The column will be focused on wine pairings for different foods.

Committee Reports
Communications
Jay Peterson provided an update from the Communications Committee. The contract for JoEllyn Jolstad needs to be renewed and is in progress.
Schools
Committee will be meeting at the end of this month. Vivid Interiors is helping design the school “nest” meeting space. We have a new school board representative for Bryn Mawr, Bob Walser. Also, Rebecca Gagnon has been elected as the new School Board Chair. She has

several ties to Bryn Mawr. There may also be a nature-based preschool opening up soon in Bryn Mawr. Details to follow as they are available.
Nominations
Nominations are open for BMNA Area Representatives for Areas 1, 3, 5, 7 are up. Current Representatives are asked to state whether they plan to run or if they have suggestions for replacements for their respective areas. Also, Vice President and Treasurer positions are open. Elections occur in May.
Community Projects
Joanne Michalec gave an update on Community Projects. Chris is working on the speed sign, getting that ready to install. Also, BMNA is taking applications for community projects. Ideas are due March 1st. There are approximately 30 projects in review currently. Recommendations on projects to move forward will be due in April.
CPP/NPP/NRP
Dennis Fazio gave an update. BMNA still needs to complete the application. BMNA cannot tap into CPP funds until the application is completed. Patty Wycoff volunteered to start the application.

SWLRT Report
Barry Schade gave an update on SW Light Rail. Though the funding bill has not yet passed, the rail cars have been ordered. Stations will be Bryn Mawr and Bassett Creek.

With no further discussion or new business, the motion to adjourn was seconded. Meeting was adjourned at 7:55 p.m.

NEXT BOARD MEETING:
Wednesday, February 8, 2017
6:30 p.m., Bryn Mawr Elementary Cafeteria

The BMNA invites and encourages participation by every resident to each program, service and event organized by the BMNA. Should you require an accommodation in order for you to fully participate, or if you require this document in a different format, please let us know by contacting our neighborhood coordinator at organizer@BMNA.org at least five days before our event.

ROLAYNE'S
HAIR DESIGN

408 Cedar Lake Road
612.377.4179

Hair cuts, color, style and product.
Appointments & walk-ins welcome!

Juliette
Paul Mitchell products

Nancy
Organic products



If you have historic information or photos that you would like to share with the Bugle, please email Kevina Munnich at kmunnich@gmail.com.

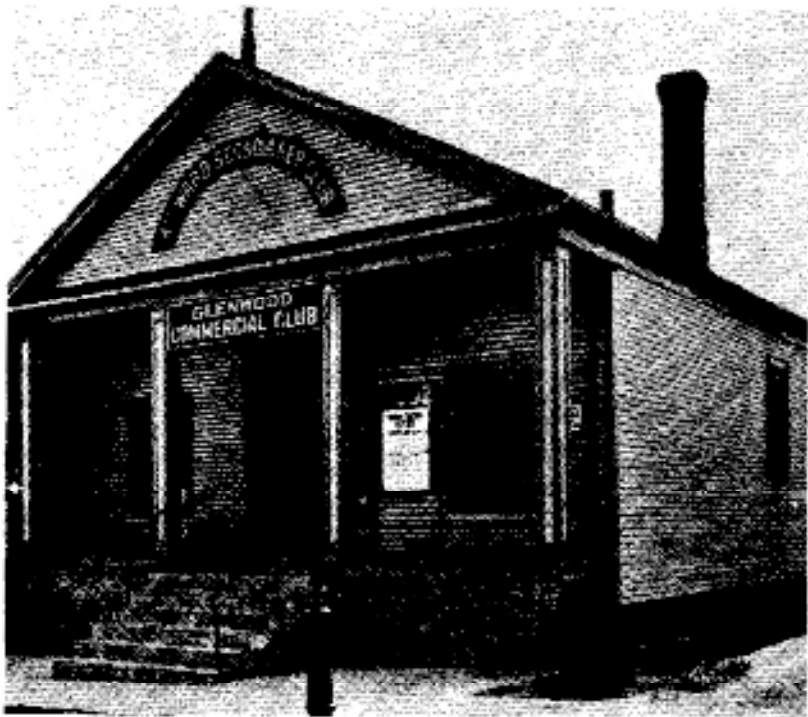


I'm gathering information about the homes (and families) that had been in the Bryn Mawr Meadows through the 1960s. Some of those families stayed in Bryn Mawr after their homes were demolished for the park expansion. If you would like to share your story, please contact me: Kevina Munnich - kmunnich@gmail.com. I think it's important to record this history before we forget...

I believe this to be a picture of Bryn Mawr Elementary 5th grade class of 1955. 5th grade is when the Junior Fire Department program was presented. Can someone confirm? Let us know if you recognize anyone - either email (kmunnich@gmail.com) or post on Next Door. Redeemer Lutheran, on Glenwood Avenue, continues as a vibrant part of our community. It's carillon bells continue to play.

REDEEMER LUTHERAN CHURCH CELEBRATES ITS 75th ANNIVERSARY

Redeemer Lutheran Church has been celebrating its 75th year all during 1984. Reunions of members, special services, a collective yearbook of members and special dinners have marked this special year.



Four Ward Scandia Republican Club Hall

In May 1909, Field Missionary John Zundel and student C.J. Rockey began with Sunday School and evening service in Scandia Republican Club Hall (at Cedar Lake Road and Western Avenue. Western was the former name of Glenwood). June 3, 1909, they met in the home of Otto Dressler with six others and drew up Articles of Incorporation and a Constitution.

Redeemer has grown from this inception to the present structure at Logan and Glenwood. During the 50 years much has grown and changed besides architecture. But some things remain the same: for example, in 1919 members collected money and clothing to send to Polish Relief. Today regular collections are gathered for local food shelves.

Redeemer is different from many inner city churches in that approximately 50% of its members live within two miles of the church. Yet membership has dropped from 1200-1400 30 years ago to 374 today. The challenge is trying to minister to long time members as well as to current newer members, according to Pastor John Bohnsack.

Redeemer has moved with the times. For the past five years the International Institute has rented space in Redeemer for the teaching of English as a second language for newcomers to the United States. Hundreds of people have been taught English at Redeemer, many with the aim of securing employment and of ultimately passing the citizenship examination. And many Redeemer members have been the teachers. Redeemer is active in the North Minneapolis Lutheran Coalition which has the aim of pooling resources for projects advantageous to the neighborhoods.

KARS (Kids at the Redeemer's Service) has worked with neighborhood youth summer and winter.

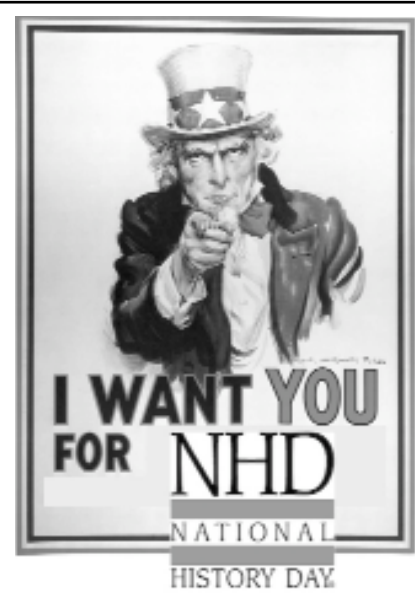
Longtime older members recall: Virginia Samelson remembers the big June picnic at Minnehaha Park when Sunday School children would ride out on a chartered streetcar and yell out the window:

Ice cream, soda water,
lemonade, pop.
Redeemer, Redeemer,
always on the top.

Pearl Mikkali of Penn Avenue and Empi Kaari also remember those rides. Empi recalls a Sunday School of 400 members. In those times Redeemer had the largest Lutheran League in the Twin Cities.

Now Redeemer looks to the future and to continued service.





**Anwatin Middle School
Wants YOU
For National History
Day!**

Who: Anwatin is looking for teams or individuals willing to volunteer as judges. No history knowledge or past judging experience needed!

“Judges” are really adult mentors and community members taking the time to help kids verbalize what they have learned. They provide feedback and acknowledgement.

What: History Day is a national academic research competition that takes place in classrooms across the country. National History Day is a great opportunity for our students to demonstrate that as IB students they are principled, open-minded, inquiring members of a global community.

When: February 15th, 2017, 9:30 a.m. – 3:00 p.m. Judges can choose a block of time that works for them, from one hour to all day!

Where: Anwatin Middle School library, 256 Upton Avenue South, Minneapolis, MN 55405

Why: To celebrate and honor our student’s work. To help them see themselves as scholars. To help our students think critically about their work.

How it works:
Sign up as an individual or with a “judging team” for a block of time. This team could be your co-workers, representing your corporation, organization or institution.

Spend a few hours on Feb. 15th talking to amazing kids about all the hard work they did.

Ask them questions. Listen. Acknowledge their work. Push them to tell you more.

Judges will individually “judge” as many projects as their time allows. A simple form for you to fill out will be provided for each project “judged”

If working as a team, compare judging notes. Choose one – three “winners” to be awarded by your organization. Feel free to come up with a creative name for your award, or add an additional prize of some type. Attend the awards ceremony the next day to present your winners yourself, if you are able! If not, we will do it for you.

Learn more:
Email robyn.eliason@mpls.k12.mn.us with questions or to sign up!

“The function of education is to teach one to think intensively and to think critically. Intelligence plus character – that is the total of true education.”
- Dr. Martin Luther King Jr.

City of Minneapolis

POLICE DEPT

Curfew: It's the law!

For the safety, protection, and health of our youth, curfew hours are important to abide by.

Youth are the #1 victims of crime.

Age	Sun-Thurs	Fri-Sat
Under 12	9:00 pm	10:00 pm
12-14	10:00 pm	11:00 pm
15-17	11:00 pm	12:00 pm



Youth & Schools

**Family Open Gym at Bryn Mawr
Community School Thursdays,
6-8 p.m. December through April**

The Mawr Neighborhood Association invites parents and children to come play together at Family Open Gym on Thursday evenings from 6:00 PM to 8:00 PM at the Bryn Mawr Elementary School. Both the big gym for older kids and the little gym for younger kids, will be open. The gyms will be available to kids and their parent or caregiver each Thursday through April. Some equipment is available, but please feel free to bring your own. All Bryn Mawr families are welcome!

**Southwest High School
Performing Arts**
Southwest High School,
3414 West 47th Street, Minneapolis
www.southwesttheatre.org

There are wonderful things going on in Performing Arts at Southwest. Our mission is to develop artistic expression and authenticity in storytelling while building community in our school and surrounding Minneapolis neighborhoods.
(Performances at SW High School Auditorium unless noted otherwise).

You Can't Take It With You
February 1-4, 7 pm
Unhinged Student Theatre Company
performances, SWHS Black box

Choir Concert
February 7, 7pm

**Band Concert w/Lake Harriet and
Anthony Middle Schools**
February 13, 7 pm -

Orchestra Concert w/Lake Harriet Middle School
February 15, 7 pm -

Guitar Concert
February 23, 7 pm, SWHS Commons

**Spotlight Musical –
Sweet Charity**
**March 16-18 & 23-25 at 7 pm and
March 19 & 26 at 2 pm.**

Music by Cy Coleman, lyrics by Dorothy Fields and book by Neil Simon. It was directed and choreographed for Broadway by Bob Fosse starring his wife and muse Gwen Verdon.

Charity works at a dance club and has only seen the dark side of life but thinks things are changing when she meets Oscar. Even when things turn sour, Charity stays Sweet and hopeful of her dreams.

To find our more or purchase tickets go to
<http://southwesttheatre.org/>

**Contact Information For
Community Schools**
Bryn Mawr Elementary (PreK-5)
252 Upton Avenue South
612-668-2500
brynmawr.Minneapolis.k12.mn.us
Minneapolis Kids School-age Childcare
(at Bryn Mawr School)
612-668-3890
mplskids.Minneapolis.k12.mn.us/

Anwatin Middle School (6-8)
**International Baccalaureate and
Spanish Dual Immersion**
256 Upton Avenue South
612-668-2450
anwatin.Minneapolis.k12.mn.us
Anwatin Community Education
612-668-2478
www.mplscommunityed.com



Call Minneapolis 311 for information
Weekdays 7 AM to 7 PM
Weekends 8 AM to 4:30 PM

Minneapolis 311 is more than a phone number. It's also a 24-hour online resource for access to City services.
Minneapolis311@minneapolismn.gov

Be part of the Bugle!

BUGLE NOTES • FASCINATING FOLKS • PHOTO FEATURE
• OUT & ABOUT • YOUTH & SCHOOLS • PARKS •
BUSINESS SPOTLIGHT • ENVIRONMENT • GARDENS

Email your neighbor news to bugle@bmna.org or drop it in the Bugle Box at the Bryn Mawr Market.

mce

Minneapolis
Community Education

Adult and Family Enrichment Classes at Anwatin

Winter classes open for enrollment at www.mplscommunityed.com or call 612-668-2478

Snowshoeing

5 Mondays, Feb. 6-Mar. 13
6:30-8:00 PM (no class Feb. 20)
Enjoy the winter by snowshoeing with your friends and family at Theodore Wirth park. Exercise and stay healthy in the winter. Bring snow shoes if you own a pair. \$40.00

Yoga: Fitness

7 Mondays Feb. 6-Mar. 27
6:00-7:20 PM (no class Feb. 20)
Increase your strength, improve your flexibility and practice balance, relaxation, and breathing techniques through yoga exercises. Wear comfortable clothes, and refrain from eating before class. Bring a yoga mat. \$45.00

Yoga: Fitness

8 Wednesdays, Feb. 1- Mar. 22
6:00-7:20 PM
Increase your strength, improve your flexibility and practice balance, relaxation, and breathing techniques through yoga exercises. Wear comfortable clothes, and refrain from eating before class. Bring a yoga mat. \$50.00

Guitar 2

6 Wednesdays, Feb. 1- Mar. 8,
7:30-8:30 PM
Pick up where you left off in Guitar 1, and learn how to play with more finesse. The instructor will teach augmentation, how to play in alternate tunings, and the double thumb-

ing finger picking technique. Bring a guitar and a flat pick \$28.00

Literacy in the Woods

2 Saturdays, Feb. 4 & 11, 10-11:30 AM
Bring your family's learning outdoors! The beautiful woods of Theodore Wirth Park will lead your family to discover our urban wildlife through literacy and photography activities, promoting family togetherness, literacy and numeracy. Part of the class will be outdoors. Wear weather-appropriate clothes and bring a digital camera or phone with camera. Class is appropriate for ages 2-8. \$18.00

Beginning Bread

Monday, Feb. 27, 6:00-9:00 PM
Do you wish you knew how to make those wonderful bakery breads your grandmother once made? Here's your chance! Learn to make whole wheat, rye and white bread. \$24.00

Breakfast Breads

Monday, Mar. 13, 6:00-8:30 PM
Prepare popular morning treats to make your kitchen smell great. Explore techniques that work. Supply fee of \$7 will be collected in class. \$20.00

Scones

Monday, Mar. 27, 6:00-8:30 PM
Enjoy delicious scones starting from a simple recipe and discover daring additions to make your scones come alive. These crispy, flaky treats will be a delicious addition to your lineup of go-to quick breads. \$20.00



Bryn Mawr Moms on the Search for Good Books & Food

A Man Called Ove
By Fredrick Bachman

Almost every review you read of this book will include a line that A Man called Ove is about a classic grumpy old curmudgeon. Ove has lost the will to live after his wife of 40 years dies, his wife who was everything to him. "People said Ove saw the world in black and white. But she was color. All the color he had."

Ove loved his wife "too much" and decided to kill himself to be with her. The story is constructed around his suicide attempts, each interrupted and each revealing intimacies of his past and uncovering his character.

Ove is a devoted Saab owner; a major theme in the book is his loyalty to this Swedish company. He loses a friendship when a neighbor buys a BMW, stating "A guy like that can clearly not be reasoned with." And what does the Saab represent—all that he finds important in the world; tradition, consistency, practicality.

We enjoyed the book despite how predictable it was, and for some, his grumpiness—like real life! Through a variety of mishaps, Ove comes to love his annoying neighbors and appreciate his life. Bachman is a great storyteller and tells a beautiful love story. The flashbacks bring understanding to why he's a wounded man, and how he deals with grief.

Avenida Cocina & Bar
11390 Wayzata Blvd., Minnetonka
"Mexican and Latin fusion—tastes of Argentina, Peru, Mexico, and Brazil"

This is a really easy restaurant to access on a Friday night. Located in the old Macaroni Grill that closed after 18 years, it's a free standing building with a big parking lot in the Westridge Market shopping center on 394 and Hopkins Crossroad. Kaskaid Hospitality, the company behind the Crave chains, owns and operates it. Kaskaid also runs BLVD Kitchen and Bar, just across the parking lot from Avenida.

We started with a pitcher of Margarita's (what else?) and chips and salsa. It worked well to share the fried yucca, which looked like puff pastry, and the cheese empanadas. They were served with a tasty black bean sauce. We shared a few entrees; the paella, chaufa, and quesadillas. The paella was all seafood; the chaufa (Peruvian fried rice) was more flavorful. The best were the mushroom tacos with manchego cheese and caramelized onions. We topped it off with flan.

Sitting next to the fireplace, it was cozy and quiet even with a houseful of families all around. The meal was good, filling, and not too expensive. A perfect Friday night with friends.

What the Moms are reading now:
Queen of the Night, by Alexander Chee

Letters

Area 6
We are supporting Ray Dehn for mayor. Please stop by our home at 200 Upton Av S on Thursday February 23 from 7:00-8:30 pm if you would like to meet him or ask questions.
- Dick and Connie Adair, area 6

WEEKLY MEETINGS OF ALCOHOLICS ANONYMOUS

are held at Bryn Mawr Presbyterian Church,
Cedar Lake Road and Laurel Avenue, on
Tuesdays at 7:30 p.m.

All interested people are invited to attend.

Bryn Mawr Presbyterian Church Welcomes You!

✝
Sunday School Classes @ 9:30 a.m.
Age Five Through Third Grade
Fourth Grade Through Confirmation

✝
We Worship Each Sunday @ 10:30 a.m.
Nursery available for children 5 years & younger during Education Hour & Worship

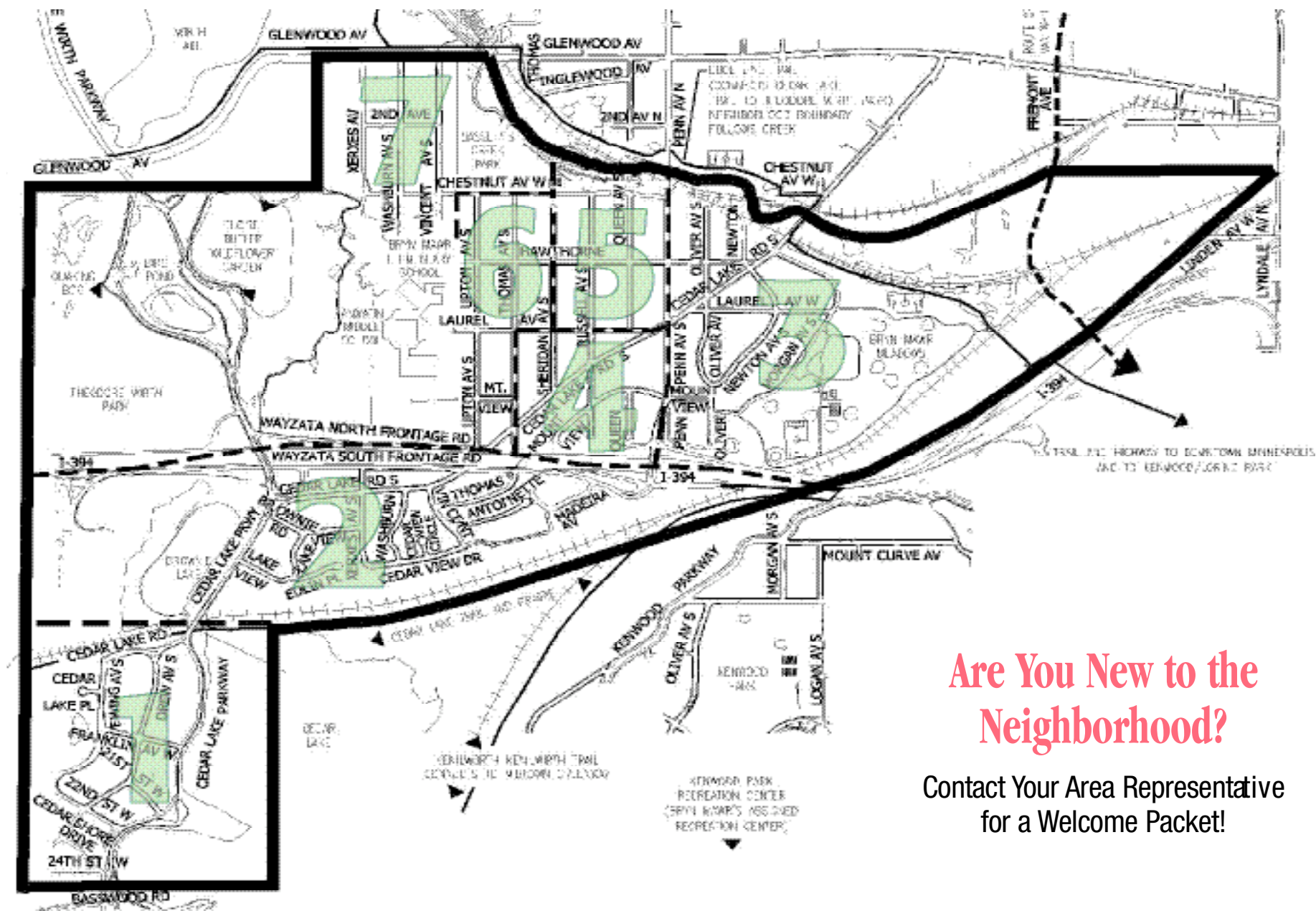
✝
All Are Welcome Here!

COMPLIMENTARY ADVERTISEMENT In Exchange for BMNA Meeting Space



Bugle also available at www.bmna.org

A reminder that in addition to being delivered to your doorstep, the Bryn Mawr Bugle is available online at bmna.org. Click on the Bugle logo on the home page to read the current edition or go under the 'Bugle' tab to see past editions and to learn more about advertising rates and submission deadlines.



Are You New to the Neighborhood?

Contact Your Area Representative
for a Welcome Packet!

THE BRYN MAWR NEIGHBORHOOD ASSOCIATION

2915 Wayzata Bouleva rd, Minneapolis, MN 55405

BMNA Board Members

President: Kevin Thompson, president@bmna.org	612-296-5409
Vice President: Jessica Wiley, vicepresident@bmna.org	612-374-3481
Treasurer: Dennis Fazio, treasurer@bmna.org	612-910-6611
Secretary: JD Dietrich, secretary@bmna.org	
CPP Coordinator: Nick Cichowicz, cpp-coordinator@bmna.org	

Area Representatives

1 Greg Froehle, greg.froehle@bmna.org	612-926-2882
Dave Holets, dave.holets@bmna.org	612-922-8274
2 Lynda Shaheen, lynda.shaheen@bmna.org	612-374-4201
Susan Verrett, susan.verrett@bmna.org	612-377-7447
3 Dennie Juillerat, dennie.juillerat@bmna.org	612-850-5658
4 Christopher Etz, christopher.etz@bmna.org	612-378-2987
Joanne Michalec, joanne.michalec@bmna.org	612-377-3348
5 Brian Treece, brian.treece@bmna.org	763-229-3663
Beth Turnbull, beth.turnbull@bmna.org	612-423-3033
6 Vida Ditter, vida.ditter@bmna.org	612-374-1481
Jay Peterson, jay.peterson@bmna.org	612-377-4677
Barry Schade, barry.schade@bmna.org	612-203-1758
7 Steve Harvey, steve.harvey@bmna.org	612-374-3613

Bugle Corps

Editor JoEllyn B. Jolstad 612-377-8968 bugle@bmna.org
Neighborhood Coordinator Patty Wycoff 612-239-1710 coordinator@bmna.org
Police Liaison CCP/SAFE Rowena Holmes 612-673-2833 Rowena.Holmes@minneapolismn.gov
Advertising Deryck Jolstad 612-377-8968 advertising@bmna.org
Subscriptions Kate Olson 612-810-6402 subscriptions@bmna.org
Mailing Address 2915 Wayzata Blvd. Minneapolis, MN 55405-2145
Phone 612-767-1876
Drop Off Box Bryn Mawr Market, behind the counter
Web Site bmna.org Jeremy Staffeld webmaster@bmna.org



Want Ads

Rates: \$4.50 minimum (4 lines, approx. 40 characters per line), \$.50 per additional line. **FREE** ads for lost, found, free items, pets & youth ads.
Due Date: 20th of preceding month. **Instructions:** No ads over the phone please or accepted without payment. Drop off in the Bugle Box at the Bryn Mawr Market or email bugle@bmna.org.

Be sure to check references, State Agencies, BBB, etc. and inquire about bonding when using any new service.

SERVICES

CONCRETE/BRICK/STONE/MASONRY: Repair or New - foundations, driveways, sidewalks & steps, garage slabs, also kitchens & bathrooms. Call Gary 651-423-6666.

MATH AND GENERAL TUTORING: I'm an honors graduate of Carleton College, IB Diploma recipient, and National Merit Commended Scholar. I also received a perfect score on the SAT math section and competed on math team. I work as an educational assistant for middle school math students and have tutored several clients in the past. Contact: elirobiner@gmail.com.

SNOW REMOVAL, LAWN CARE, TREE & SHRUB TRIMMING: Premier Lawn & Snow, Inc. providing reliable snow removal/lawn care, tree and shrub trimming with quality results for SW Minneapolis since 1987. For prompt estimate call Dennis (952) 545-8055.

VOLUNTEER OPPORTUNITIES

Anwatin Middle School is looking for volunteers to share the joy of reading with 8th grade students who would benefit from individual attention. Prefer volunteers who can commit to working 9:15-10:15 am twice a week (your choice of days Monday through Friday) from mid-February through May 2017. Please contact Sara Langer at sarallanger@gmail.com if interested.

Looking for a different kind of volunteer gig?

One where you can see the immediate impact of your time? Prepare + Prosper is seeking volunteers who are passionate, skilled and excited to help people move from "getting by" to "getting ahead." Prepare + Prosper provides fee-free tax prep from January to April at tax clinics across the metro (no prior tax experience necessary!) Be a part of something great. <http://prepareandprosper.org>

Volunteer opportunity in the neighborhood

Bryn Mawr Presbyterian Church in partnership with Sheridan Story provides weekend food bags for about 100 children at Bryn Mawr School. Weekends are a tough time when kids go without the breakfast and lunch the school provides. We need volunteers who follow a list of locker numbers and insert the pre packed food bags in children's backpacks. No experience necessary and you will always be working with someone who has experience. The event happens every Friday at 11:30 at Bryn Mawr School. Time commitment is one hour and you may sign up just once or as many times as you want. More information and the sign-up can be found here: <http://www.signupgenius.com/go/8050b4cacab28a02-201617>

YOUTH SERVICES

Hi, my name is Gabe Engel and I am 14 years old. I am available to feed your cat/water plants while you are out of town, mow your lawn(I bought an electric mower with my own money) or babysit. Please call me if you need any of these things. 612-990-1738.

The Bryn Mawr Bugle is an open-for-run newspaper published by the Bryn Mawr Neighborhood Association. Content is based entirely on volunteer submissions which may be emailed to bugle@bmna.org. Articles and letters to the editor will be printed at the discretion of the Editor. The Bryn Mawr Bugle is published every month except January. Distribution is free to Bryn Mawr residents; copies are also available at the Bryn Mawr Market, Bryn Mawr Mobil and Cuppa Java. Subscriptions are \$21 per year. Opinion articles represent the opinion of the writer; not necessarily those of the Bryn Mawr Neighborhood Association or the Editor of the Bugle. The Bryn Mawr Bugle will print letters to the editor as space allows. Letters may be edited for length without altering the letter writer's message. Letters must be signed by the person who wrote them. Under the law; letter writers, like journalists, may not commit libel, be obscene, reveal names of juveniles accused of crime, invade personal space, or incite to riot.

Copy deadline for the March issue is February 20!

Display & Classified Ads are due February 20th. Ads must be pre-paid & camera ready.

Call Deryck Jolstad at (612) 377-8968 or djolstad@msn.com for rates.

GENERAL ADVERTISING POLICIES: All ad copy is subject to approval by the paper, which reserves the right to reject or request changes to an ad. Ad placement does not imply endorsement by the BMNA. The advertiser, not the paper, is responsible for the truthful content of the ad. Readers use service/product providers at their own risk and are solely responsible for checking references, state agencies, BBB, etc.

COORDINATOR CORNER

**My name is Patty Wycoff and I am the
Bryn Mawr Neighborhood Association Coordinator.
Feel free to contact me at
coordinator@bmna.org or 612-239-1710.**

If you are not part of our e-mail list, please sign up at www.bmna.org.