



BRYN MAWR BUGLE

Published by the Bryn Mawr Neighborhood Association

October 2016

8th Annual Sip and Stroll - Thursday, October 13th, 6:00-8:30pm

Come to downtown Bryn Mawr and Sip and Stroll through our wonderful businesses.

Here's how this event works....

1. Look for the Sip and Stroll 2016 poster on the front door/window of a business.
2. If a business has this poster on their front door/window, step inside and ask for a punch card, see what the business has to offer and learn more about their products and services. Have the business owner initial your punch card before you move on to the next business.
3. Visit every participating business and have your punch card initialed each time.
4. If you visit every business and get an initial on your punch card from each owner, you can drop your card in the vase at Cuppa Java and hope to win a prize. All

prizes are donated by our generous businesses. MAKE SURE YOU INCLUDE YOUR NAME/PHONE NUMBER ON YOUR CARD!!!!

5. Drawing begins at 8:45 at Cuppa Java.

Don't miss this great event and an opportunity to get to know our business owners better. They are the backbone of our community. Join the fun and show your support.

- *Patty Wycoff, Neighborhood Coordinator*

Look for this poster at participating businesses.



Buckthorn: If We Each Do a Little, We Can All Do a Lot

Please join us!

Saturday, October 15th and Sunday, October 16th from 1-4pm we will be clearing buckthorn in Bassett Creek Park (enter from Chestnut alley between Vincent and Upton).

Just show up anytime between 1 and 4pm—and you're free to decide how long you can stay. No experience needed. You'll quickly learn how to identify and remove buckthorn.

This is our 4th year clearing buckthorn from Bassett Creek Park and we'd love your help to keep making progress.

Neighbors (and their dogs) who are in the park regularly have noticed the difference — a more open, more walkable, and more beautiful park. Clearing buckthorn is rewarding way to spend an hour or two in the woods in autumn in your own neighborhood. Please join us!

What is buckthorn and why should I care? Here are some answers from Liz Anderson (Area 7) and Welby R. Smith's *Trees and Shrubs of Minnesota* (University of Minnesota Press, 2008):

What is buckthorn? Common buckthorn was brought to North America from its native Europe sometime prior to 1850. It was intended for use as a hedge plant, but it proved to be extremely invasive and quickly escaped into the wild. In Minnesota, it has now spread over most of the state. Minnesota law classifies it as a restricted noxious weed that cannot be sold or transported in the state.

Why is it a problem? Buckthorn grows quickly in the open, in brushy habitats, and in woodlands. Once you recognize it, you see it everywhere. It can form nearly impenetrable thickets in forests. Buckthorn has no natural biological controls in North America, which means it lacks

the complex interrelationships that keep these plants, insects, and wildlife in balance.

Why do we want to remove it?

1. Buckthorn reduces diversity. It easily outcompetes native shrubs for light and moisture, which greatly reduces the abundance and diversity of plants. Fewer varieties of native plants and shrubs support fewer varieties of insects, birds, and other wildlife.

2. It significantly alters the experience of taking a walk in the woods. "Walking in the woods" comes to mean walking on a path between encroaching thickets of buckthorn. Woodlands infested with buckthorn are no longer places to be explored and played in—for children or adults—because buckthorn thickets make it virtually impossible to get into—or even see into—the woods.

What does it look like? Buckthorn ranges from small seedlings to bushy shrubs to small trees (up to 35 feet high). It's most easily identified in the fall, when its leaves stay dark green and remain on the shrubs long after all other leaves have fallen.



Common buckthorn in Bassett Creek Park

How is it removed? Small seedlings (less than 1 inch in diameter) can be pulled by hand. A very sturdy tool, a "weed wrench" is used to mechanically uproot larger shrubs. (We have these weed wrenches and train you to use them.) The largest trees must be cut and the stumps treated with herbicides (by Park Board staff only).

— Buckthorn Removal
continued on page 8



2016 BMNA Events

- April 22 - Bryn Mawr Elementary Family Fun Night
- May 7 - Bryn Mawr Festival of Garage Sales
- May 11 - Bryn Mawr Neighborhood Association Annual Meeting and Potluck Dinner
- July 16 - Bryn Mawr Garden Tour
- August 18 - Ice Cream Scoop Off
- October 13 - Sip and Stroll
- November 17 - Bryn Mawr Harvest Dinner
- December 8 - Anwatin Craft Fair
- December 10 - Satumalia

NEW DATE!



BMNA Reporter

BRYN MAWR NEIGHBORHOOD ASSOCIATION

Board Meeting Agenda

Wednesday, September 14, 2016

7:00– 8:45 PM

Bryn Mawr Presbyterian Church

Call to Order and Introductions:

Jessica Wiley Called the meeting to order at 7:14

Attendees:

Jessica Wiley: Vice President
James Dietrich: Secretary
Dave Holets - Rep Area 1
Linda Shaheen – Co-Rep Area 2
Susan Verrett – Co-Rep Area 2
Joanne Michalec - Rep Area 4
Beth Turnbull - Co-Rep Area 5
Brian Treece – Co-Rep Area 5
Vida Ditter – Co-Rep Area 6
Barry Schade – Co-Rep Area 6
Steve Harvey – Rep Area 7
Patty Wycoff – Neighborhood Coordinator

Jeremy Staffeld - Webmaster
JoEllyn Jolstad – Bryn Mawr Bugle

Guests:

C. Terrence Anderson: Metro Transit
Lisa Goodman – City Councilperson
Karen Ringsrud, Area 1
Matthew Dowling, Area 4

Additions to Agenda

- Variance process
- Speed of traffic on Cedar Lake Road.

Vida moved to approve today's agenda. Carried.
Susan moved to approve last month's minutes. Motion carried.

City of Minneapolis:

Councilmember Lisa Goodman's Report

This month's Lunch with Lisa topic is working with the Tiny Solar House, a solar powered house which generates all of its own electricity needs through solar and which received 30K visitors at the Fair. There will be a 1 hour open house, then the lunch on Community Solar. Renewable Energy will give a presentation. September 28, University of St Thomas, Opus Hall, Room 202.

Neighborhood update: MTN channels have changed due to upgrade to HD. Comcast is 14 and 799 in HD. Multi language is 859. Centurylink is 8001, HD will be 8501, Multi language.

Neighborhood update: Early voting starts on the 23rd of September. The closest voting location is downtown at public service center.

2000 Cedar Lake construction variances approved.

Overview of Variance Process:

- Neighborhoods review but do not have power to grant or deny requests, which follow either conditional use or variance requirements. Variance is granted only if something unique to process that is not standard to code (as in the layout of the lot).

- Applicant files application with City. The City sends notice to neighborhood association.

- Variances are quasi-judicial. Elected officials cannot take a position on variances in front of judicial processes.

- Official notices must go out to individuals who live within 300 feet of the requested variance.

- Anyone can testify at a hearing of the request.

- It could also go in front of the Board of Adjustment, which will review the uniqueness for granting of a variance.

- Request is either granted or denied by City.

Discussion around the speed of traffic on Cedar Lake Road and other neighborhood streets.

- Multiple attempts have been made over the years to curtail speeding. A suggestion was made to request the speed wagon for the neighborhood.

- Discussion around Tiny Houses and whether they would be allowed on property. Tiny Houses are smaller than ADU (Alternative Dwelling Unit). Tiny Homes that plug in would likely not qualify as an ADU.

Treasurer's Report—Dennis Fazio - Via Email

- Budget needs to be set for 2017. BMNA will receive approximately \$19K in CCP funds annually

- BMNA receives about \$12K from membership annually

- Current Assets and Receivables: \$141,000.

- 2016 Projected expenses between \$80,000-85,000.

- BMNA should create budgets for prioritized issues and projects.

- Dennis will be proposing to add a professional bookkeeper.

Metro Transit Update on West End/Route 9 Study:

C. Terrence Anderson (Community Outreach Coordinator)

Discussion focused on Route 9 transit study.

Goals:

- Route 9 is a complex route with 6 branches. Goal is to make route easier to understand.

- New transit supported developments include sidewalks, dense development, retail. West End provides 12,000 jobs paying \$40K. Goal is to better serve West End retail, residences, and jobs.

- Lots of segments of Route 9 have low ridership. Goal is to reinvest

resources to where more ridership exists.

- Route 9 can be unreliable. Goal is to address reliability issues.

- MetroTransit is proposing to eliminate some services on Route 9.

Proposed Changes:

- 9B Glenwood west of Penn. Losing 9B has significant impact to Area 7. There were noticed reliability issues on the 9 line. Goal is to support underserved to West End. Steve suggested a circulator version for limited service. Suggested to advertise more to potential riders.

- 9H To Benilde St Margarets. Proposed changes have a significant impact to Area 1 riders, and to kids who take buses to school.

- Proposed eliminated stops are within walking distance of another station.

- MetroTransit feels many riders can utilize the 604, 645, and/or 649 to access those areas affected by the proposed changes. Discussion included BMNA suggestion to review effects on student ridership of current and future routes.

Suggested changes can be viewed found at www.metrotransit.org/west-end. There is a feedback form to provide opinions and suggestions. Ringsrud moves the BMNA opposes elimination of Route 9H and 9B Bryn Mawr. Seconded by Vida.

After discussion and debate proposed amended Motion:

Because of the concerns for senior citizens, high school students, and the lack of support to downtown businesses and medical offices, BMNA opposes the changes to 9H and 9B routes and encourages MetroTransit to find alternative ways to support these populations.

Motion Carried.

Recap of E-Vote to support voter registration: Kevin Thompson

In response to a request to support the get out the vote project BMNA voted to support voter registration initiative at Cub on Broadway near Lyndale. Due to low numbers of voters needing to be registered, the initiative has ended.

A Committee has been formed to discuss the E-vote process. Committee is Dennis, Jay, JD, and Vida.

West Market District: Barry Schade

West Market District is a business co-op to look at issues west of downtown. Barry suggests creating a liaison or a committee to attend this coop. perhaps Bryn Mawr should pursue association with this new West Minneapolis association. Barry will connect with Patty to coordinate, since Patty is already connected with them through the Sip and Stroll and other events.

Basset's Creek Park Update—Beth Turnbull

Park Board is redoing the playground at Basset Creek creating a considerably larger play area, and will complete a sidewalk to western edge of Bryn Mawr. Timeline: completion is expected by next summer.

Neighborhood Coordinator Report Patty Wycoff

- Sip and Stroll Oct 13th

- Membership: \$10,400 collected to date

- Requesting each board member send personal notes to neighbors who may be interested in contributing to the BMNA.

- Discussion around moving Harvest Dinner closer to Thanksgiving, suggesting Thursday, November 17, provided the room is available.

Bugle Report: JoEllyn Jolstad

- BMNA Webmaster Jeremy Staffeld will author this month's Bugle Article.

- Getting articles in by deadline to submit is important.

Webmaster Report: Jeremy Staffeld

- Suggests changing front page of bmna.org to Upcoming Event(s) page.

- Looking into larger text, with graphics.

Standing Committee Reports Schools

- Anwatin has plans to build soccer field and track useable by neighborhood on the south lawn between school and Centurylink.

- Approached by Yes for Kids to support referendum for continuation of levy. They would like BMNA support. Failure to pass impacts 590 teachers due to budget gap that would ensue if the levy sunsets.

Levy has been in place 8 years, Vote is on the ballot in November.

Schools committee will bring back resolution in support of the referendum to the board

Standing Reports

ROC Update—Vida Ditter

- Leaf Bros property has been bought and new uses proposed.

- Impound lot next steps are imminent.

- Discussion about the lot on Fremont and Van White.

- ROC will follow up with Ryan Companies on plans for development on west linden yards.

SWLRT Update—Barry Schade

- LRT is coming to Bryn Mawr!!!

Barry moved to adjourn. Seconded. Meeting adjourned at 8:55p.m.

NEXT BOARD MEETING:

Wednesday, October 12, 2016


7:00 p.m., Bryn Mawr Elementary

UPCOMING EVENTS:

Sip and Stroll, October 13, 2016

Harvest Dinner, November 17, 2016

note date change

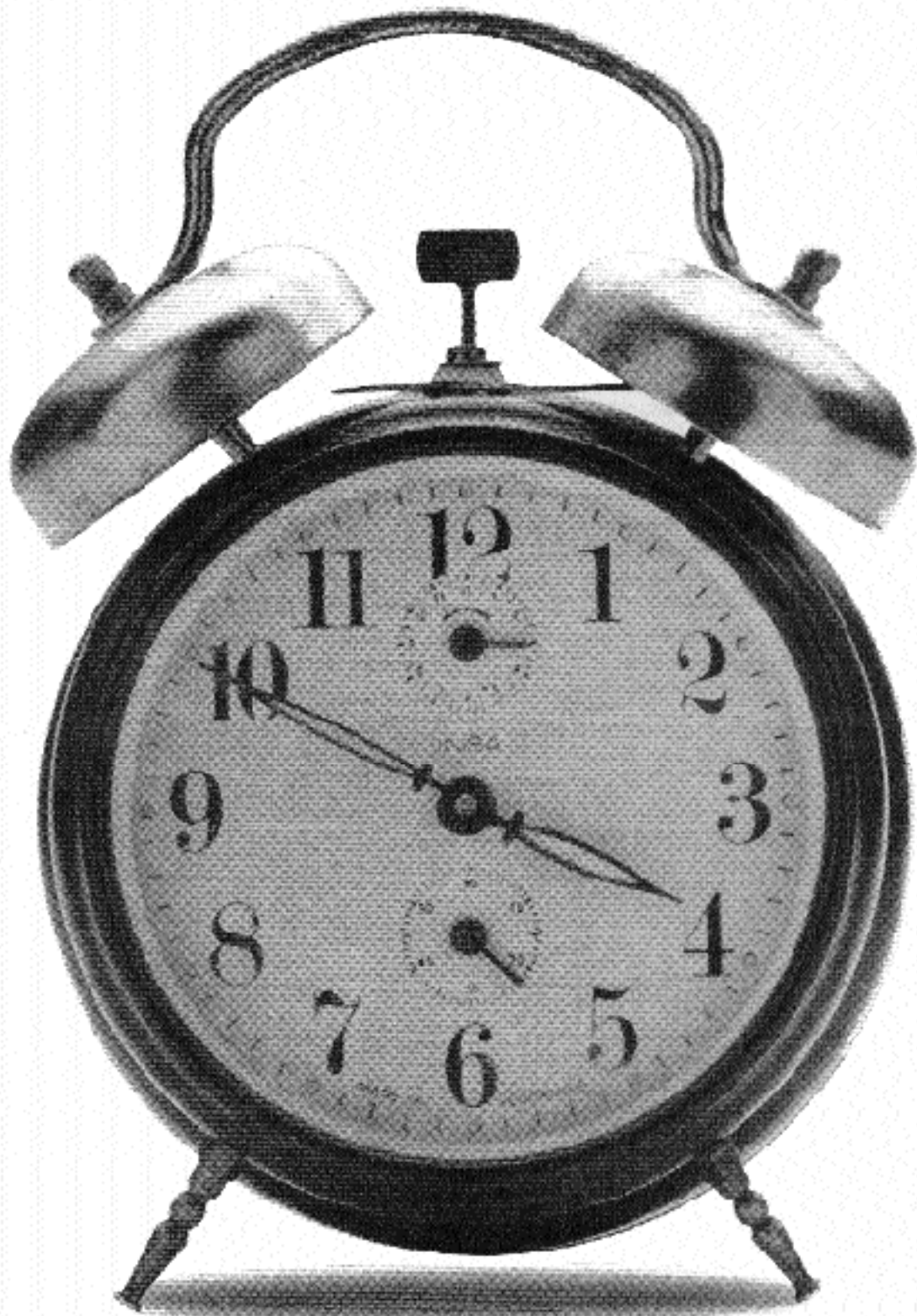


bmna.org
Find BMNA Board minutes and reports on-line!

The BMNA invites and encourages participation by every resident to each program, service and event organized by the BMNA. Should you require an accommodation in order for you to fully participate, or if you require this document in a different format, please let us know by contacting our neighborhood coordinator at organizer@BMNA.org at least five days before our event.

House Selling Tips

Get up.
Call Jim.
Go back to bed.



Call now for expert advice and a free market evaluation of your home.

Jim Kalitowski
REALTOR

He's been around your block.

612-867-6703
jimkalitowski@remax.net

 **RE/MAX**
Results
Each office independently owned and operated

© 1996 James Kalitowski, Realtor.



Recycling

www.ci.minneapolis.mn.us
/solid-waste
(612) 673-2917

Bryn Mawr Recycling Schedule

| | Monday | Tuesday |
|--|--------------------------|-------------------------|
| Area 1 | October 10 October 24 | |
| Areas 4W, 5W, 6, 7 | October 3 October 17 | |
| Areas 2, 3, 4E, 5E | | October 4 October 18 |
| Use it up, wear it out, make it do, do without. Recycle. | | |

What are you doing this weekend? Why not go DANCING!
LIVE music is more FUN!



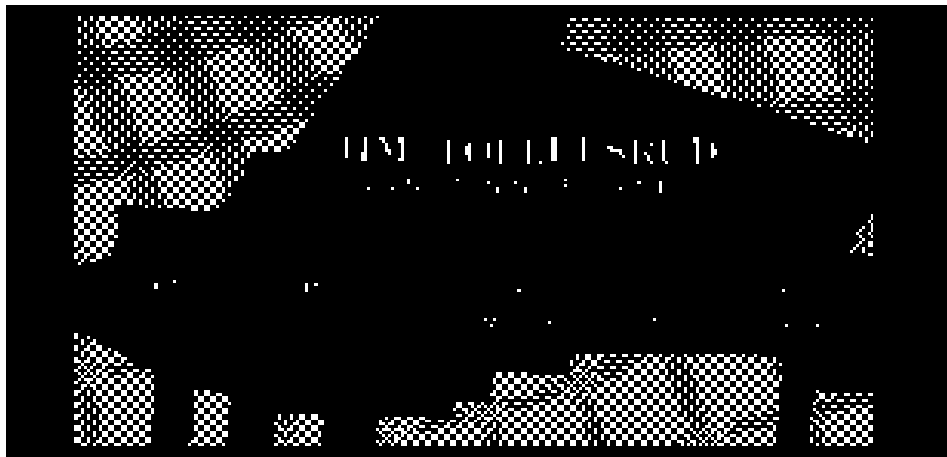
Check our website & come see us. We'll rock your socks off!
Hans Gasterland, drums. Call today: 612-723-5038




Milda's Cafe

Established in 1965
Breakfast All Day!
Try Our Traditional Pasty
MONDAY - WEDNESDAY - FRIDAY
Takeout Available
Open Monday - Friday 6am to 3pm
Saturday and Sunday 8am to 2pm

612-377-9460 • 1720 Glenwood Ave, Minneapolis



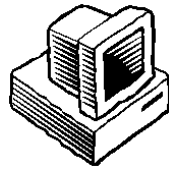


MILL CITY DENTAL

JAY WILLIAMS, D.D.S.

612-377-3740

2218 LAUREL AVENUE • MINNEAPOLIS, MN 55405



From the Editor

This year's BMNA Harvest Dinner has been rescheduled from its usual late-October date, to Thursday, November 17. This change in date is a return to the roots of the event which promises to be a fun opportunity to connect with neighbors before winter's cold blows us all indoors.

The Bryn Mawr Harvest Dinner was started by the Bryn Mawr Presbyterian Church. When I moved to the neighborhood in 1993, the Bryn Mawr Neighborhood Association was co-hosting the event. It was held at the church, the Thursday before Thanksgiving. When the addition linking Bryn Mawr Elementary and Anwatin Middle School was built, the BMNA used NRP (Neighborhood Revitalization Program) dollars to put in a community kitchen and the event was moved to the school.

After a couple years, the BMNA and the church ended their partnership on the Harvest Dinner. The church continued to hold its Harvest Dinner in mid-November and the Neighborhood Association gave their event a Halloween spin and moved it to late October.

There is a lot more to the story than just the facts, of course. But the bottom line is that this year, costumes are out and turkeys are in!

One reason for the change is that for the past eight years, the downtown businesses have held their event, The Sip and Stroll in mid-October. Our hard-working Neighborhood Coordinator, Patty was experiencing "event fatigue" and to some degree so were the participants as evidenced by dwindling attendance.

This year's Sip and Stroll is Oct. 13. It is fun night on which our fabulous downtown businesses take the lead. All you have to do is show up and enjoy their hospitality! The refreshments are free but bring some form of payment to take advantage of the many specials offered that evening. As an incentive to visit all the participating establishments, pick up a punch card and have each proprietor add their stamp. Put your name and phone number on the back of your completed card and leave it in the jar at Cuppa Java. At 8:45 cards will be drawn and prizes given.

Many people linger at Cuppa Java until closing time at 10:30pm. You will have a full month to recover before dusting off your Bryn Mawr community event smile again. So tune in to in the next edition of the *Bugle* for details about the new/old Harvest Dinner.

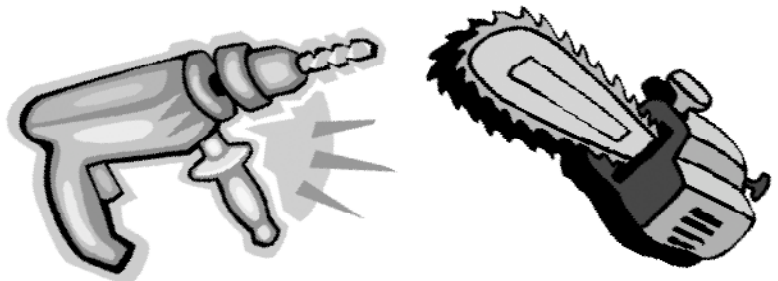
- JoEllyn Jolstad, bugle@bmna.org

NORTH END HARDWARE



Exceptional Service

**Have a job?
We have a Tool.**



**Northend Rental
Just Rent It!**

NORTH END HARDWARE & RENTAL
at PENN and LOWRY

Hours: M-F, 7 a.m.-6:30 p.m.; Sat, 7 a.m.-5 p.m.
Darryl Weivoda, Owner

612-529-9151 • Northendhdwr@aol.com

Fascinating Folks

By Anna Quirk, Area 6

In honor of Bryn Mawr's beloved Sip and Stroll event, this month's Fascinating Folks is a favorite merchant-Greg Griffith-owner of Trappings- known for his beautiful store and creative and ever changing window displays.

A Dream Realized

Greg's dream was to open his own store. Having worked in retail since college, he earned his "pedigree stripes" at Nordstrom climbing the corporate ladder. When he found a store front available in Bryn Mawr, it was a "no-brainer" and he opened his own store. Friends brought Greg along to a Saturnalia event a year earlier and he described the Bryn Mawr neighbors standing around open fires and enjoying sleigh rides & Santa Clause in the falling snow. "It was like I was on a movie set," says Griffith, just idyllic.

Trappings

Previously, the space currently housing Greg's store had been a barber shop, a drycleaners, a hardware store and then finally an antique store. Now its home to Trappings, a men's clothing store, which carries a mix of casual sportswear, accessories, gifts, new and vintage barware. My husband loves the variety of shirts and patterns available at Trappings. When I walk into Trappings to talk with Greg, I feel like I'm walking



into a catalogue shoot. Greg has stylized every corner of the store to make it feel nostalgic and elegant.

The word trappings is defined as "the articles of equipment or dress: of an outward ornamental character." That's exactly what one feels when walking into Trappings. The walls are adorned with artwork, portraits and photos that harken to the past. Many photos are from Greg's childhood growing up in Dayton, Ohio, "keeps my family close to me," Griffith says.

Mpls/StPaul magazine compared Trappings to a Wes Anderson film – very "Budapest Hotel."

Greg's mission at Trappings is to provide a fun, visually exciting, shopping experience and offer tasteful product at the best value. Greg's relationships in the menswear business allow him to procure opportunity buys and pass the savings on to his customers. "We just want our customers to have a fun easy shopping experience when they come in and feel they purchased a good value when they leave", Greg says. On Fridays & Saturdays customers frequently ask "is it Happy Hour yet?" Greg's response, "we never want to disappoint so we make it happen!"

Mr. Griffith

Greg, along with his partner Michael live in Lowery Hill and enjoy cooking and entertaining for friends and family. They also have their favorite go to restaurants and enjoy walks around the Lakes.

Greg is a passionate merchant and it is apparent in his care of Trappings. Stop in during Sip and Stroll to experience new fall collections, spirits, live music and receive 20% off your purchase.

Do you know any Fascinating Folks in your neighborhood, or would you like to see a feature on someone specific?

Email bugle@bmna.org Attention: Fascinating Folks.

**Bryn Mawr
Presbyterian Church
Welcomes You!**

✦

Sunday School Classes @ 9:30 a.m.
Age Five Through Third Grade
Fourth Grade Through Confirmation

✦

We Worship Each Sunday @ 10:30 a.m.
Nursery available for children 5 years & younger
during Education Hour & Worship

✦

All Are Welcome Here!
COMPLIMENTARY ADVERTISEMENT In Exchange for BMNA Meeting Space

Bryn Mawr Soap

On sale at Bryn Mawr Market
and Twin Cities area co-ops

www.brynmawrsoap.com 612-374-3613

WEEKLY MEETINGS OF ALCOHOLICS ANONYMOUS
are held at Bryn Mawr Presbyterian Church,
Cedar Lake Road and Laurel Avenue, on
Tuesdays at 7:30 p.m.
All interested people are invited to attend.

**ROLAYNE'S
HAIR DESIGN**

**408 Cedar Lake Road
612.377.4179**

Hair cuts, color, style and product.
Appointments & walk-ins welcome!

Juliette
Paul Mitchell products

Nancy
Organic products

Parkway. Wellington Properties has purchased the Leef Holdings property just east of Cedar Lake Road and has plans to convert about 50,000 square feet of the existing industrial building into creative office space tentatively called Currie Market. Wellington plans to raze part of the structure and is working with Art-space to develop 110 mixed-income apartments. Wellington's acquisition also includes land on adjacent blocks, where additional residential units are planned, according to David Wellington, director of acquisitions and development for Wellington Management.

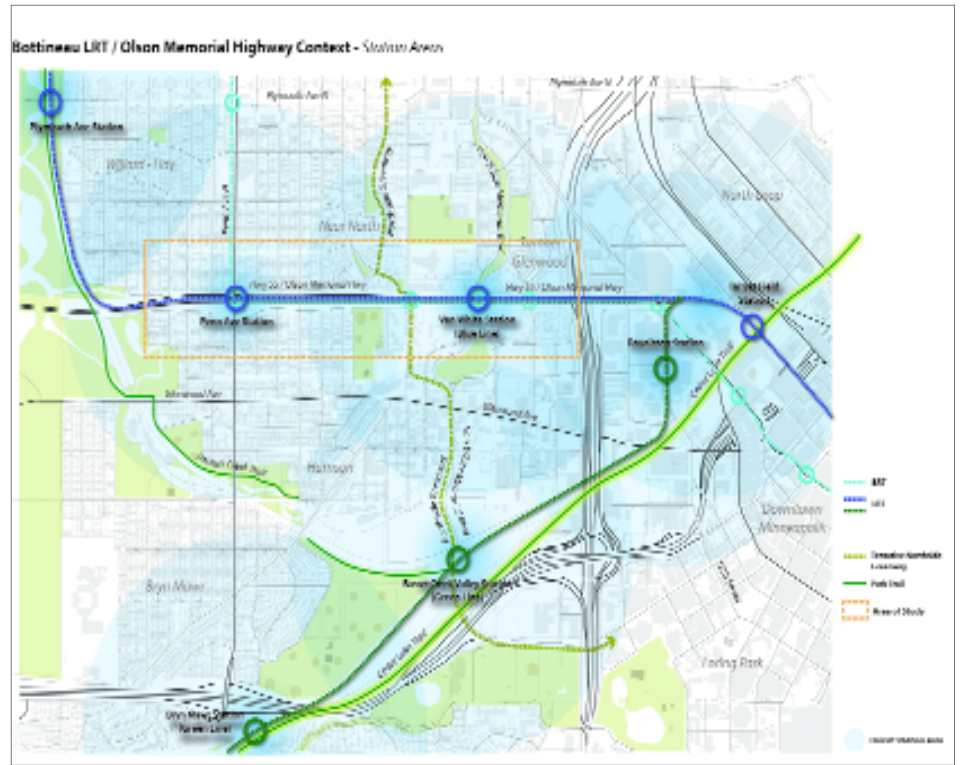
While David Wellington points out that the new Currie Market development will be an eight-minute walk from the Bassett Creek Valley Station and a ten-minute walk from the Van White Boulevard Station, he does not view the LRT lines as driving their development. "Opportunities like this are perhaps not a direct result of LRT, but nearby transit – especially LRT – helps developments like this succeed and get to scale more rapidly." Wellington also views Bassett Creek as a "huge untapped amenity" near the Currie Market development that could make the area more attractive for their development and others as well.

Beth Grosen, the City of Minneapolis Sr. Project Coordinator for this part of North Minneapolis, says that the City and the ROC are looking at ways of opening up access to

Bassett Creek by relocating the west portion of the City's car impound lot and perhaps building a new bridge to that area from the north. Grosen says the City of Minneapolis will be issuing a request for proposals (RFP) to develop three parcels near Van White Boulevard and 2nd Avenue North this fall.

The Bassett Creek Valley Station near Van White Boulevard and I-394 has long been considered a major opportunity for transit-oriented development in Minneapolis. Ryan Companies held the development rights for the Linden Yards area (also known as the "banana" because of its shape) until the end of 2015 when those rights expired. Ryan developed a concept plan for the property that included residential and office space. Grosen says that the City will likely issue a new RFP for the western portion of the Linden Yards area in 2017.

The area south of I-394 and west of Penn Avenue offers another opportunity for new development in Bryn Mawr. In 2011 a graduate student team from the University of Minnesota's Humphrey School of Public Affairs did a study of the development potential for the area on the bluff overlooking Cedar Lake that would link to the Bryn Mawr Station by a walk bridge over the railroad tracks. The student's capstone study for the Bryn Mawr Neighborhood Association included sketch designs for residential development. The study was used by



BMNA to argue the importance to the Metro Council of keeping the station at Penn Avenue in the SWLRT plan. The SWLRT final plan now includes the station at Penn, which has now been renamed the Bryn Mawr Station. The capstone study is available on the BMNA website at http://www.bmna.org/wp-content/uploads/SWLRT_Bryn_Mawr_Small_Area_Plan_May_3_2011.pdf

Lee Munnich is a former Minneapolis City Council member who represented the 7th Ward. He is a senior fellow at the University of Minnesota's Humphrey School of Public Affairs and specializes in

transportation and economic development policy and planning. Munnich's Humphrey School graduate students conducted the capstone study of the Bryn Mawr Station for the Bryn Mawr Neighborhood Association.

Include map of Bryn Mawr and Harrison showing the location of the four LRT stations and the location of the development sites.

Include sketch of Wellington West Market development (I would use the residential view from 2nd Ave N. and Cedar Lake Road.

Include sketch of Linden Yard development with downtown in background

BRYN MAWR 2016

SIP 'N STROLL
8th Annual Neighborhood Shopping Nite



COME JOIN US
THURSDAY,
OCTOBER 13
6:00 to 8:30 pm

NEW FALL COLLECTIONS
ARRIVED! ENJOY 20% OFF
REGULAR PRICED ITEMS!

MUSIC BY
JAMISON MURPHY



Curated fun for men. 404 Penn Ave. S. Mpls. MN



MON-FRI: 11:00 AM - 6:00 PM
SATURDAY: 11:00 AM - 5:00 PM
SUNDAY: 12:00 AM - 4:00 PM

trappings
est.2013

— **Buckthorn Removal**
continued from page 1



How can I help?

Here are two ways to help restore Bassett Creek Park:

1. Come to our event, Saturday, October 15 and/or Sunday, October 16, 1:00-4:00. We'll have plenty of weed wrenches and we'll teach you how to use them. Come for as much or as little time as you have. Wear appropriate shoes and clothes that can get dirty, and bring gloves. Meet at the woods on Chestnut, between Upton and Vincent.

2. We have several weed wrenches available for you to use anytime, here in the neighborhood. Borrow one from Liz, 612-834-1189, lizanderson@gmail.com, or Gary and Leni, 612-374-4171, morgang51@gmail.com, when you get the urge to be in the woods and pull some buckthorn on your own. (And removing buckthorn in your yard is important too. Even one small buckthorn plant's berries can get eaten and deposited by birds elsewhere, making many more buckthorn plants.)

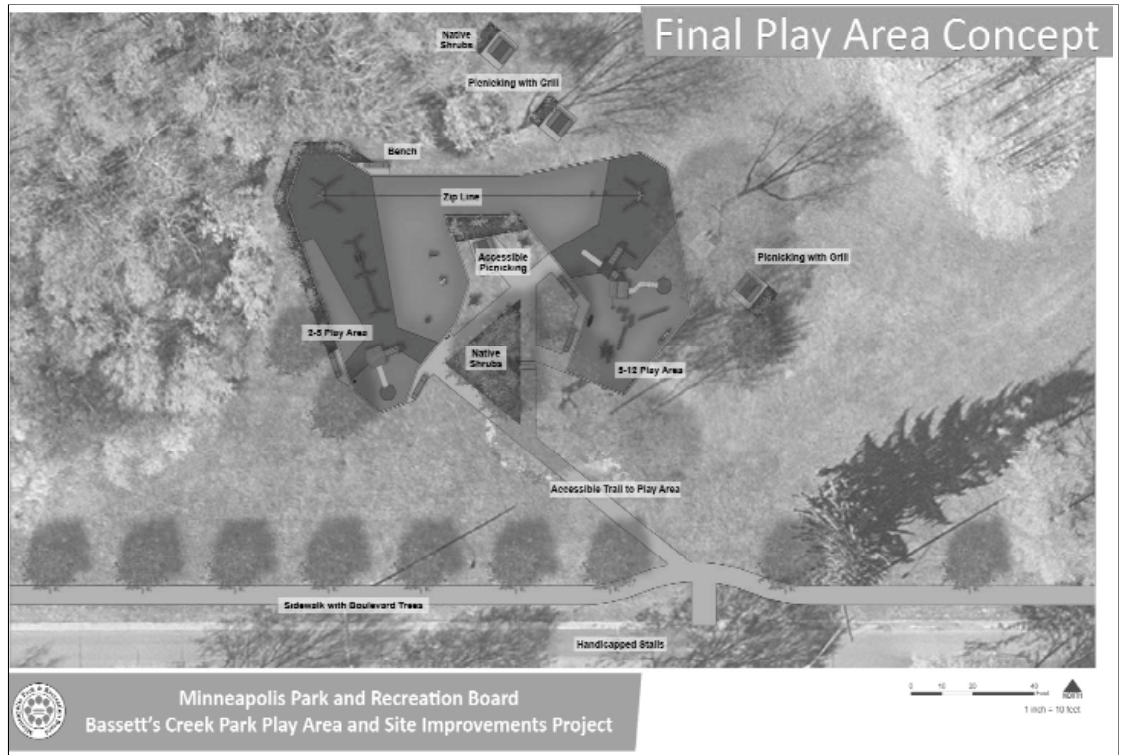
Visit our Facebook page facebook.com/buckthombegone and Like or Follow our page to keep in touch.

Note: Our group exists in partnership with Minneapolis Park Board's Environmental Stewardship Volunteer Program. Neighbors remove small to medium-sized buckthorn by hand or with weed wrenches. Park Board staff haul it away.

Playground at Bassett's Creek Park

The Bassett's Creek Park Playground and Site Improvements Project is nearing the end of its planning phase. Minneapolis Park and Recreation Board (MPRB) staff presented the final concept to the community at a public meeting on Sept. 26. The playground design will feature natural materials and earth-toned colors to fit the natural setting of the park. An ADA accessible walkway from Chestnut Avenue down to the new play area is included in the concept, along with new benches, picnic tables, bike racks, a sidewalk along the south edge of the park, and the reconstruction of the trail along Bassett Creek.

At the Sept. 26 meeting, community members generally favored the concept with a few minor suggestions for specific play equipment. A



public hearing on the final play area concept will be considered by the MPRB Planning Committee in November. The public hearing date, time and location will be announced in October. Visit www.minneapolisparcs.org/subscribe and select "Bassett's Creek Park Playground and Site Improvements" to subscribe to email updates about the project.

Construction of the play area, picnic area and access trail will take

place in spring 2017. Further coordination between the Bassett Creek Watershed Management Commission and the City of Minneapolis will occur prior to the reconstruction of the creek trail and sidewalk. Visit www.minneapolisparcs.org/current-projects to find more information and updates on every capital improvement project in Minneapolis parks.

- Tyler Pederson, Area 6

Minneapolis Audubon Society Monthly Events

Friday, October 14, 2016, 1:30 p.m.
TREASURES OF ROBERT'S BIRD SANCTUARY
- DR. DAVE ZUMETA

Join the Minneapolis Audubon Society for food and fun at the Bryant Square Neighborhood Center, 31st & Bryant Avenue S, just one block south of Lake Street, easily accessible via the #4 bus, which runs every 15 minutes! For more information call 763-533-8381.

MPRB Loppet Foundation Partner at Theodore Wirth Regional Park

On Wednesday, Sept. 7 the Minneapolis Park and Recreation Board (MPRB) and the Loppet Foundation confirmed a shared commitment to world-class outdoor recreation and programming at Theodore Wirth Regional Park. MPRB Commissioners approved three agreements that facilitate the construction, donation, lease and operation of a new outdoor recreation hub in Wirth Park. The agreements will also guide enhanced coordination between the two organizations to provide superior programming and outdoor experiences for underserved Minneapolis residents and park users than either organization could deliver independently.

Soon the Loppet Foundation will break ground on The Trailhead, a 14,000-square-foot building that will

serve as a jumping-off point to year-round outdoor activities such as mountain biking, cross-country skiing, snowshoeing, trail running and hiking. The Trailhead will function as a place for outdoor enthusiasts of all ages, experience levels and backgrounds to come together and enjoy the outdoors in the MPRB's largest park.

The three agreements outline an innovative, long-term relationship to provide world-class, year-round recreational programming. The Donation Agreement establishes a path for the Loppet to construct The Trailhead building according to the design approved in August 2015 by the MPRB after months of community engagement and a formal public hearing. Upon completion, the Loppet Foundation will donate the building to the MPRB.



October 3, 2014 A favorite food of grey squirrels at this time of year appears to be the fruit of black walnut trees. They hoard them, take them to a safe place (such as our backyard picnic table), and enjoy them. If interrupted, they will give you a good scolding!



October 9, 2015 Biking along the Cedar Lake Trail on a sunny day, occasional purple stemmed asters stand out against the faded grasses and flowers in striking fashion. Unexpected October beauty.

October 15, 2016 Full moon, the Ojibwe falling leaves moon. After this date, average Twin Cities temperatures drop quite rapidly.





From the ARCHIVES

Belos is the response for the photo last month. This was in the April 1980 Bugle. If you have historic information or photos that you would like to share with the Bugle, please email Kevina Munnich at kmunnich@gmail.com.

ANSWERS TO THE NOSTALGIA CONTEST. AND WE HAVE A WINNER!

Top row l. to r.: Leonard Ramberg, Paul Hake, Ray Lemke, Stan Shanedling, Milt Honsey, Joyce Finrud, Dr. George Olson, Dr. W. Dickson, John Romlin, John Goetz, Dudley Baldrige; 2d row l. to r., Mrs. Goss, Norma Holman, Katherine Bergford, Jane Hickok, Genevieve Lyman, Mary Goodlund, Sue Dahl, Alma Kuehn; Teachers in front row: Mrs. Burgess, Nola Lind, Ethel Keckefoth principal, Miss Ulrich, Lois Everts.

Henry Kuehn, 1224 Lakeview, identified them all with the exception of 3 letters wrong in one name. He wins \$5. Louise Olson (wife of Dr. Geo. Olson in the picture), now of 7500 York South, Edina, identified all but two; a team effort in the name of Laura Dickson, 400 Groveland, identified all but one.

Mr. Kuehn writes, "When I saw the photo in the Bugle of the Bryn Mawr PTA group, I remembered there was a similar one in a photo album my wife Alma kept. I found it and the occasion when the photo was taken was a party given for several Bryn Mawr school teachers who were retiring. Former PTA presidents arranged for this farewell occasion which was in May, 1956. All four of our children attended Bryn Mawr School, as we have lived at 1224 Lakeview since 1928. My wife Alma died in 1966. The B.M. PTA was an unusually active and enthusiastic organization, and it worked cordially and effectively with the teaching staff. Most, if not all, of the houses in my general area have over the years changed owners several times. Perhaps I am the only one in the general area who has lived and still lives in the same house going back to 1928 when it was built. Your Bugle editors are doing a splendid job. Congratulations!"

Thanks, Mr. K., Congratulations to you!

Bruce Jones, 1924 Laurel, who captained Laura Dickson's team, writes that Mrs. Dickson identified most of the names. "She also solicited the help of Bryn Mawr resident Katherine Bergford (pictured). Laura's husband, Dr. Wm. Dickson (pictured) was my mother's uncle as well as the family dentist. I might note that even though I wasn't brought up in Bryn Mawr, I am the fourth generation of my family to live here. My mother and both of her parents were brought up here. Another generation back are a number of my great-grandparents who settled on Russell and on Thomas! (Laura Dickson formerly lived at 440 Sheridan)

Laura Olson wrote, "We were residents of Bryn Mawr area for 46 years and were active in the PTA organization while our children were active in the school there. We happened to be present at this celebration of the school when 4 teachers were honored. Many of those pictured are not living at the present time. We enjoyed our years there very much and were reluctant to leave the area, but time marches on. (The Olsons lived at 1033 Thomas Ave. S.)

Genevieve Lyman was the person who supplied us with the picture and the suggestion that we run it as a contest to see how many could be identified. Thank you, Genevieve!



I'm gathering information about the homes (and families) that had been in the Bryn Mawr Meadows through the 1960s. Some of those families stayed in Bryn Mawr after their homes were demolished for the park expansion. If you would like to share your story, please contact me: Kevina Munnich - kmunnich@gmail.com. I think it's important to record this history before we forget...

Thinking of buying or selling
a home in 2016?

I can help, call Today!

Experienced In Saving You Money

Katie Johnstone, REALTOR®

612.889.3237

KatieJohnstone@edinarealty.com



Edina Realty

Edina Realty is a franchise of Keller Williams Realty

For news you can use, visit the NEW www.bmna.org.

Anwatin Community Education Welcomes Danny Burgos to Adult Programs

Daniel Burgos was born and raised in Mexico City and moved to the US in 2000. Passionate about soccer, Daniel coached and played on various teams while working as a food and beverage manager. Deciding to dedicate himself to his passion, Daniel left the F & B industry and began working with Community Education as an afterschool soccer coach in 2010. Beginning with a small team of 15 students, he has since grown his program to a thriving group of 60+ students. Daniel has also taught youth Beacons classes in both English and Spanish, assisted with the Access program for Adults with Disabilities and serves as Parent Liaison for Anwatin Middle School. We welcome Daniel as he takes over coordinating Access and Adult Enrichment classes at Anwatin this year.

Danny and his family are deeply committed to Minneapolis. His wife teaches at and his children attend



Minneapolis Public Schools and they are proud to call Minneapolis their home.

If you would like to teach an evening class for adults or adults with disabilities at Anwatin, call Danny at 612-668-2478.



Youth & Schools

Minneapolis Board of Education approves resolution to place property tax referendum renewal on Nov. 8 ballot

The Minneapolis Board of Education has approved a resolution asking voters to renew an existing property tax referendum of \$1,604.31 per student. The renewal decision will go to Minneapolis voters on Nov. 8.

The current property tax referendum, which generates 13 percent of Minneapolis Public Schools' (MPS') 2016-17 budget, will expire this year. If approved by voters, the renewal will extend the funding for nine years. Property taxes for most Minneapolis homeowners are not projected to increase if the referendum passes.

MPS relies on referendum resources to manage class sizes and provide supportive services and activities for students. This year, referendum revenue is funding more than 750 positions, including 591 classroom teachers, 82 academic and behavioral specialists and 81 teachers and support staff for English learners.

It also funds math, science and literacy curriculum and materials as well as classroom technology.

MPS is committed to using referendum funding to impact student achievement. Resources and information, including the official ballot language, property tax information and links to district budgets, are available at

www.mpls.k12.mn.us/referendum2016.

Contact Information For Community Schools

Bryn Mawr Elementary (PreK-5)

252 Upton Avenue South
612-668-2500

brynmawr.Minneapolis.k12.mn.us

Minneapolis Kids School-age Childcare (at Bryn Mawr School)

612-668-3890

mplskids.Minneapolis.k12.mn.us/

Anwatin Middle School (6-8)

International Baccalaureate and Spanish Dual Immersion

256 Upton Avenue South
612-668-2450

anwatin.Minneapolis.k12.mn.us

Anwatin Community Education

612-668-2470

www.mplscommunityed.com

Help Students Vote on Election Day

Volunteers needed at Minneapolis Polling Places.



civic education and helps students understand the importance of voting.

For this to happen, KVM needs 400 community volunteers who staff the 130 city precinct polling places to assist students as they vote. We are in need of volunteers for Nov. 8. This is a wonderful, one-time volunteer opportunity plus a one hour training session. The Election Day shifts are 3 hours— 2:00-5:00pm or 5:00-8:00pm. If you can help, contact the KVM Volunteer Coordinator, Jennifer Nilsen at mplskidsvoting@gmail.com.

Kids Voting Minneapolis is a community-based, nonpartisan, nonprofit organization working to prepare Minneapolis' 50,000 K-12 students to be educated, informed voters. Kids Voting Minneapolis combines civic learning in the classroom, family dialogue at home, and an authentic voting experience to prepare the next generation of citizens.

Since 2004, in partnership with the Minneapolis Public Schools and the Minneapolis City Elections Department, Kids Voting Minneapolis (KVM) has offered Minneapolis K-12 students the opportunity to go to the polls on Election Day with their parents/guardians and vote. Students vote in their own voting booth, on their own ballot, and get an "I Voted" sticker. This authentic voting experience furthers

City of Minneapolis Curfews

| Age | Sun-Thurs | Fri-Sat |
|----------|-----------|----------|
| Under 12 | 9:00 pm | 10:00 pm |
| 12-14 | 10:00 pm | 11:00 pm |
| 15-17 | 11:00 pm | 12:00 pm |

City of Minneapolis

POLICE DEPT



Curfew: It's the law!

For the safety, protection, and health of our youth, curfew hours are important to abide by.

Youth are the #1 victims of crime.



1200 Glenwood Ave. N.
Minneapolis, MN

612-377-4900

www.northwesterntire.net

OIL CHANGE

\$19⁹⁵

(up to 5qts non-synthetic oil)

Most vehicles. Must present coupon. Cannot be combined with other offers. Plus tax, shop supplies & environmental fees. Expires 11/1/16.

FALL CARE CARE PACKAGE

\$46⁹⁵

Most vehicles. Must present coupon. Cannot be combined with other offers. Plus tax, shop supplies & environmental fees. Expires 11/1/16.

Service Special

\$10⁰⁰ OFF Any Service Over \$100
\$20⁰⁰ OFF Any Service Over \$200
\$50⁰⁰ OFF Any Service Over \$500

Most vehicles. Must present coupon. Cannot be combined with other offers. Plus tax, shop supplies & environmental fees. Expires 11/1/16.

RADIATOR FLUSH SPECIAL

\$69⁹⁵

Most vehicles. Must present coupon. Cannot be combined with other offers. Plus tax, shop supplies & environmental fees. Expires 11/1/16.

We Sell ALL Brands of Tires

We Repair All Vehicle Types

Stop in for a FREE estimate

Schools Committee Supports Renewal of Public Schools Funding Referendum

On Election Day, November 8th, Minneapolis voters will decide whether or not to renew the current public school levy. Renewing the levy will not increase property taxes, it is a continuation of current rates. The district's current referendum expires after the next school year. Last approved by Minneapolis voters in 2008, the expiring referendum will bring \$74 million into the district for the 2016-17 school year. This accounts for approximately 13 percent of the district's overall budget.

Funding from this referendum would be used to manage class sizes across the district and to provide supportive services and activities for students. Overall, funding for approximately 750 educator posi-

tions in the district would be lost without the referendum dollars.

On September 22, the BMNA Schools Committee voted to support this referendum. Part of the mission of the Schools Committee is to support and strengthen our community schools. Supporting the upcoming referendum is supporting and strengthening our entire district. As supporters of the referendum, we will assist the "VOTE YES FOR KIDS" campaign by providing information at various neighborhood and school events to promote and educate voters about this very important referendum.

The BMNA Schools Committee will report to the BMNA board on Oct. 10th and ask for the entire organizations support.



Bugle Notes

Area 2 Good Neighbors

Live in Cedar Lake Townhomes, across the street from Lurie accounting firm. I contacted Lurie as a neighbor and asked if there was any way they could redirect security lighting on their building down as it was illuminating my bedroom. Within hours I received a response acknowledging my email and stating that Lurie indeed wanted to be a good neighbor and would contact their vendor for a solution. Over the next few weeks I received 2 progress updates and on August 29th their vendor installed caps that redirect the light down. I want to call out Lurie for being a great

neighbor, they were in no way obligated to alter their exterior lighting for me.

Char Cobodes

Bryn Mawr Market Collection

A big thank you to the folks at Bryn Mawr Market for selecting Anwatin Middle School Steel Drum fund as their most recent choice for the loose change jar. The drive is over and they have raised \$1322 for the school to buy steel drums. Thank you to all who shopped there and donated their spare change. PASS has now raised over \$2000 for the fund.

Bryn Mawr Movie Night to Feature Award-Winning Documentary

Bryn Mawr Church invites everyone to a special October 28th showing of *How Love Won: The Fight for Marriage Equality in Minnesota*, a documentary produced and directed by Michael McIntee that won the Audience Choice Award for Best Minnesota-Made Feature Documentary at the Minneapolis St. Paul International Film Festival.

The film is the inspiring and uplifting story of how savvy organizing, a massive number of volunteers, and a secret weapon turned the tide in Minnesota after 30 other states in a row had voted against same-sex marriage.

Simon Peter Groebner of the StarTribune said: "Michael McIntee's doc shows how the hard work of volunteers, brilliant use of empathy and an emphasis on love over

politics produced a historic shift in public opinion.... Don't plan on having dry eyes for much of these 81 minutes."

And Steve Lenius of *Lavender Magazine* said: "I invite you to watch this film and see if you don't laugh, cry, and feel a renewed sense of pride in our community, our neighbors, our allies, and our state. You want to see this movie."

Michael McIntee will join us for the showing at Bryn Mawr Church on Friday, October 28, starting at 7:00 p.m., and will be available afterwards for Q&A. There is no ticket charge; a freewill offering will be put towards increasing distribution of the film to a wider audience.



SCHOOL DISTRICT QUESTION RENEWAL OF EXPIRING REFERENDUM REVENUE AUTHORIZATION

The Board of Special School District No. 1 (Minneapolis Public Schools) has proposed to renew the school district's existing referendum revenue authorization of \$1,604.31 per pupil, which is scheduled to expire after taxes payable in 2016. The revenue will be used to manage class sizes and provide supportive services and activities for students. The proposed referendum revenue authorization would increase each year by the rate of inflation and be applicable for nine years, beginning with taxes payable in 2017, unless otherwise revoked or reduced as provided by law.

- YES Shall the increase in the revenue proposed by the board of
 NO Special School District No. 1 be approved?

BY VOTING "YES" ON THIS BALLOT QUESTION, YOU ARE VOTING TO EXTEND AN EXISTING PROPERTY TAX REFERENDUM THAT IS SCHEDULED TO EXPIRE.

Here is a sample of what you will see on the ballot.

NOTE: this is a renewal of a levy that is currently in place and not new tax.



Bryn Mawr Moms on the Search for Good Books & Food

Homer and Langley, by E.L. Doctorow

In 1947 one of the first public displays of compulsive hoarding came to light. The Collyer brothers were found dead in their brownstone in tony New York City, buried under years of accumulation of newspapers, books, furniture, musical instruments and trash. According to a *New York Times* article in 2006, a dwelling jammed rafter-high with junk is referred to by East Coast rescue personnel, "with dismay and no small degree of respect, as a "Collyer's Mansion", the phrase harkening to the Collyer's' house filled with 100 tons of stockpiled possessions.

E.L. Doctorow is best known for his works of historical fiction; he puts his characters, whether real or fiction, in historical contexts. *Homer and Langley* is based on the real-life story of the Collyer brothers. Doctorow, who died in 2015, blends fact and fiction, placing Homer and Langley in historical events of nearly the entire 20th century, confronting the issues of the era including the 1918 influenza, World Wars I and II, the Great Depression, Japanese internment, and the civil rights movement.

Doctorow creates the story that makes meaning and understanding of the brothers' behavior. Langley is a victim of mustard gassing in WWI. He returns home as a troubled man full of ideas and theories about mankind. His *Theory of Replacements*, the idea that "everything in

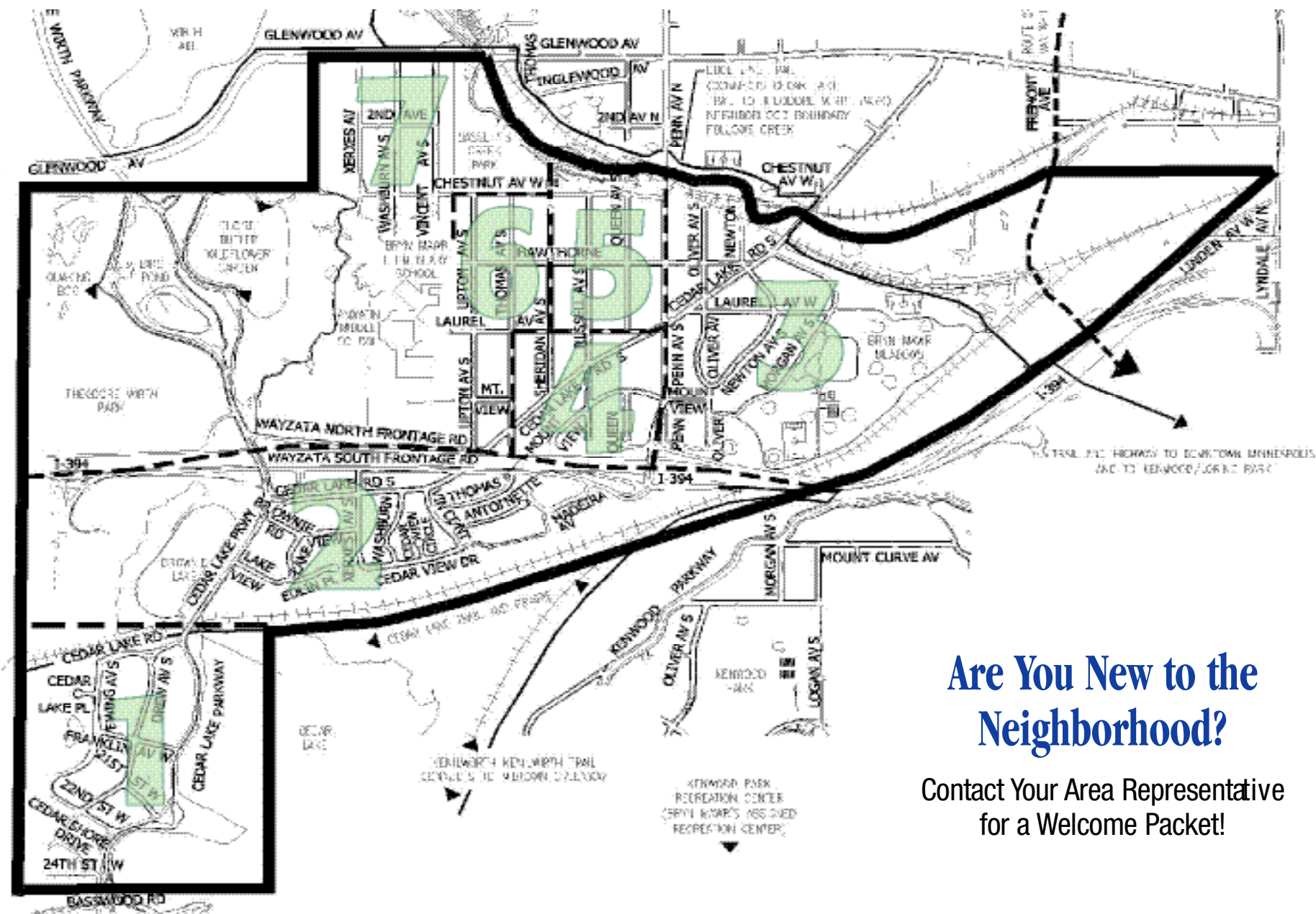
life gets replaced. We are our parents' replacements just as they were replacements of the previous generation" drives his belief that we can't learn from what has happened and that no one is special.

Homer, who goes slowly blind in his teens, is the brother who really sees and feels life. He craves love. "I still had hopes of finding someone to love but felt as I had never before that my sightlessness was a physical deformity as likely to drive away a comely woman as would a hunch of the back or a crippled leg. My sense of myself as damaged suggested the wiser course of seclusion as a means of avoiding pain, sorrow, and humiliation." Ultimately, as he also loses his hearing, he becomes cut off from the love and life he yearns for.

As the brothers become increasingly isolated from the community and insulated by their possessions and fear, the story sinks into a depressing, although humorous, view of their narrowing circles and hope. Although they are retreating from the outside world, they have interactions with cooks, housekeepers, gangsters, prostitutes, lovers, and hippies that expose the evolution of U.S. society through those who live on the edge.

The two brothers perfectly complement each other- and truly love each other. But they can't save each other.

What the Moms are reading now:
Echo, by Pam Munoz Ryan



Are You New to the Neighborhood?

Contact Your Area Representative for a Welcome Packet!

THE BRYN MAWR NEIGHBORHOOD ASSOCIATION

2915 Wayzata Boulevard, Minneapolis, MN 55405

BMNA Board Members

President:
Kevin Thompson, president@bmna.org 612-296-5409

Vice President:
Jessica Wiley, vicepresident@bmna.org 612-374-3481

Treasurer:
Dennis Fazio, treasurer@bmna.org 612-910-6611

Secretary:
Barry Dietrich, secretary@bmna.org

CPP Coordinator:
Nick Cichowicz, cpp-coordinator@bmna.org

Area Representatives

1 Greg Froehle, greg.froehle@bmna.org 612-926-2882
Dave Holets, dave.holets@bmna.org 612-922-8274

2 Lynda Shaheen, lynda.shaheen@bmna.org 612-374-4201
Susan Verrett, susan.verrett@bmna.org 612-377-7447

3 Dennie Juillerat, dennie.juillerat@bmna.org 612-850-5658

4 Christopher Etz, christopher.etz@bmna.org 612-378-2987
Joanne Michalec, joanne.michalec@bmna.org 612-377-3348

5 Brian Treece, brian.treece@bmna.org 763-229-3663
Beth Turnbull, beth.turnbull@bmna.org 612-423-3033

6 Vida Ditter, vida.ditter@bmna.org 612-374-1481
Jay Peterson, jay.peterson@bmna.org 612-377-4677
Barry Schade, barry.schade@bmna.org 612-203-1758

7 Steve Harvey, steve.harvey@bmna.org 612-374-3613

Bugle Corps

Editor
JoEllyn B. Jolstad 612-377-8968
bugle@bmna.org

Neighborhood Coordinator
Patty Wycoff 612-239-1710
coordinator@bmna.org

Police Liaison CCP/SAFE
Rowena Holmes 612-673-2833
Rowena.Holmes@minneapolismn.gov

Advertising
Deryck Jolstad 612-377-8968
advertising@bmna.org

Subscriptions
Kate Olson 612-810-6402
subscriptions@bmna.org

Mailing Address
2915 Wayzata Blvd.
Minneapolis, MN 55405-2145

Phone
612-767-1876

Drop Off Box
Bryn Mawr Market,
behind the counter

Web Site
bmna.org
Jeremy Staffeld
webmaster@bmna.org

The Bryn Mawr Bugle is an open-for-run newspaper published by the Bryn Mawr Neighborhood Association. Content is based entirely on volunteer submissions which may be emailed to bugle@bmna.org. Articles and letters to the editor will be printed at the discretion of the Editor. The Bryn Mawr Bugle is published every month except January. Distribution is free to Bryn Mawr residents; copies are also available at the Bryn Mawr Market, Bryn Mawr Mobil and Cuppa Java. Subscriptions are \$21 per year. Opinion articles represent the opinion of the writer; not necessarily those of the Bryn Mawr Neighborhood Association or the Editor of the Bugle. The Bryn Mawr Bugle will print letters to the editor as space allows. Letters may be edited for length without altering the letter writer's message. Letters must be signed by the person who wrote them. Under the law, letter writers, like journalists, may not commit libel, be obscene, reveal names of juveniles accused of crime, invade personal space, or incite to riot.

Copy deadline for the November issue is October 20!

Display & Classified Ads are due October 20th. Ads must be pre-paid & camera ready.

Call Deryck Jolstad at (612) 377-8968 or djolstad@msn.com for rates.

GENERAL ADVERTISING POLICIES: All ad copy is subject to approval by the paper, which reserves the right to reject or request changes to an ad. Ad placement does not imply endorsement by the BMNA. The advertiser, not the paper, is responsible for the truthful content of the ad. Readers use service/product providers at their own risk and are solely responsible for checking references, state agencies, BBB, etc.



Want Ads

Rates: \$4.50 minimum (4 lines, approx. 40 characters per line), \$.50 per additional line. **FREE** ads for lost, found, free items, pets & youth ads.
Due Date: 20th of preceding month. **Instructions:** No ads over the phone please or accepted without payment. Drop off in the Bugle Box at the Bryn Mawr Market or email bugle@bmna.org.

Be sure to check references, State Agencies, BBB, etc. and inquire about bonding when using any new service.

SERVICES

CLEANING SERVICE: References upon request. Call 612-803-1374.

CONCRETE/BRICK/STONE/MASONRY: Repair or New - foundations, driveways, sidewalks & steps, garage slabs, also kitchens & bathrooms. Call Gary 651-423-6666.

SNOW REMOVAL, LAWN CARE, TREE & SHRUB TRIMMING: Premier Lawn & Snow, Inc. providing reliable snow removal/lawn care, tree and shrub trimming with quality results for SW Minneapolis since 1987. For prompt estimate call Dennis (952) 545-8055.

VOLUNTEER OPPORTUNITIES

Reimbursed Senior Volunteer Positions: The Senior Companion and Foster Grandparent Programs are seeking volunteers 55+ years willing to help seniors as friendly visitors in their home & outings in the community OR to help children in school settings as mentors and tutors. Volunteers needed in YOUR community!

Tax-free stipend, mileage reimbursements & other benefits. Contact Lisa at, 651-310-9450 lisa.beardsley@lssmn.org.

Volunteer tutors are needed to teach Adult ESL & GED classes one day per week at Sumner Library. No previous experience necessary; full training provided. Must be able to commit to a 3 month period. For more information, please call John Ashby at 612-377-5399 or jashby@mnliteracy.org

YOUTH SERVICES

Hi, my name is Gabe Engel and I am 14 years old. I am available to feed your cat/water plants while you are out of town, mow your lawn (I bought an electric mower with my own money) or babysit. Please call me if you need any of these things. 612-990-1738.

COORDINATOR CORNER

My name is Patty Wycoff and I am the Bryn Mawr Neighborhood Association Coordinator. Feel free to contact me at coordinator@bmna.org or 612-239-1710.

If you are not part of our e-mail list, please sign up at www.bmna.org.

Bugle also available at www.bmna.org

A reminder that in addition to being delivered to your doorstep, the Bryn Mawr Bugle is available online at bmna.org. Click on the Bugle logo on the home page to read the current edition or go under the 'Bugle' tab to see past editions and to learn more about advertising rates and submission deadlines.

Questions about placing an ad or submitting a story? Email bugle@bmna.org.