



BRYN MAWR BUGLE

Published by the Bryn Mawr Neighborhood Association

November 2021

Sip & Stroll 2021

The sidewalks bustled with neighbors eager to visit the shops of downtown Bryn Mawr. The temp dropped just enough to call for a cup of hot cider and hand warming around the fire. And the unplugged Percolators performance made the night! Bryn Mawr is lucky to have so many wonderful businesses. Thank you to those that participated in the evening by donating raffle prizes and opening their doors to greet neighbors.

Bobby & Steve's Auto World
Bryn Mawr Chiropractic
Bryn Mawr Market
Bryn Mawr Pizza
Cockadoodledoo Gifts
CLEAR Holistic Therapies
Cuppa Java
La Mesa
Mill City Dental
Nativ3 / 612ReDo
partners (in)fertility
Rolayne's Hair Design / Greenhouse
Salon & Shop
Spruce Salon



Photos by Jay Peterson, Area 6

BMNA Monthly Meetings



Upcoming BMNA Meetings on Google Meet:

Wednesday, November 10 at 6:30pm

Wednesday, December 8 at 6:30pm

Email coordinator@bmna.org or call 612.234.7819 for meeting link and joining information.

Save the Date!

Saturnalia Winter Festival

Saturday, December 11th

4:00-8:00pm

In downtown Bryn Mawr





BRYN MAWR NEIGHBORHOOD ASSOCIATION
Board Meeting Minutes

Wednesday, October 13, 2021
6:30– 8:15 PM
Google Meet/Virtual Meeting

Board and Staff

- Kevin Thompson – President
- Brian Treece – Vice President
- Deb Anderson - Co-Treasurer
- Roberta Jordan – Co-Treasurer
- Jessica Wiley – Secretary
- Liv Nielsen – Area 1 Co-Rep
- Karen Frederickson -Area 2 Co-Rep
- Sue Verrett – Area 2 Co -Rep
- Allison Fruen – Area 3 Co-Rep
- Joanne Michalec -Area 4 Co-Rep
- Colleen Dhennin -Area 5 Co-Rep
- Beth Turnbull -Area 5 Co-Rep
- Rod Miller -Area 6 Co-Rep
- Barry Schade – Area 6 Co-Rep
- Stephen Harvey – Area 7 Co-Rep
- Vida Ditter - Emeritus
- JoEllyn Jolstad – Bugle Editor
- Lynda Shaheen – Communication/
Fundraising Coordinator
- McKenzie Erickson – Event Coordinator

Guests:

- Lisa Goodman – Minneapolis City Councilperson
- Kristin and Paul Markert – Area 4
- Bill Miner – Area 7
- Molly Dengler – Area 7
- Allison Reese
- Bruce Pappas

Call to Order at 6:31 PM.

Agenda approval moved, seconded.
Motion carried.
Minutes from September moved, seconded. Motion carried.

City of Minneapolis - Councilmember Lisa Goodman

Last Lunch with Lisa October 27. Feel we can meet safely with masks and distancing. Next speaker Police Chief Arrondondo. South Cedar Lake Rd bridge going to be replaced in 2023. Well-used and in bad shape. BNSF requiring a 10-foot fence on either side. Virtual open house October 26, 5:00 – 6:30. Information available at <https://www.minneapolismn.gov/gov>

ernment/projects/cedar-lake-rd-bridge/ Street sweeping starting. Towing of cars that aren’t moved. Go online to get map and schedule. Upsetting crime report from October 12. A call made to 911 from someone on Queen being followed. Soon after, a couple in the alley on Russell and Sheridan was robbed at gunpoint. MPD is investigating. Our Crime Prevention Specialist (CPS) is paid hourly and not given overtime so will not be attending our meetings at this time. Will be asking for a police officer to attend next month to discuss crime prevention efforts.

Crime Prevention Specialist – William Magnuson

Written report submitted. Kevin discussed the crimes that have occurred in Bryn Mawr recently with Bill. MPD is seeing a trend in the city of these types of crimes. They believe there is a group of people involved and are investigating. Police advise being aware of your surroundings.

Treasurer Report – Roberta Jordan/Deb Anderson

Books are completely organized. Currently have \$134,600 on balance sheet. \$14,000 to the good on P&L for expenses submitted to date. Waiting for some expenses and revenue to be reported. Talking with investment bankers for ideas about how to earn more interest on our savings account. Parameters set by the Finance Committee include: low risk, less than 1% in transaction fees, green sustainable investments, liquidity, aiming for between 1-3% interest. Obtained new quotes for liability insurance.

Communications & Fundraising Report - Lynda Shaheen

Sent a chart through email. Fundraising going well. Garage sale registrations came in strong. Collected some memberships at the sale table. Collect money from the food trucks. Expenses included traffic control and porta-potties. Member Night compared to last year: took in more donations, less sales of spirit wear, plant sales down due to less available. Membership drive is up over \$5000 from last year at this date. Applications to city for CPP dollars complet-

ed. Will be getting less money from the city. Have been very busy with communications. Reported on Gateway planting, member night, garage sales, and Meadow’s plan. Bookkeeping has been busy with all these activities too.

Event Report – McKenzie Erickson

Focused on Sip and Stroll. Nine businesses and raffle items lined up. BMNA serving smores and cider. Percolators are going to play in the La Mesa parking lot. Garage sale next year on May 7, 2022.

Bugle - JoEllyn Jolstad

The deadline for articles/ads is the 20th, as usual. Looking for articles from Board members.

Webmaster – Jeremy Staffeld

Written report submitted. Fixed the webstore. Security fixes done. Worked with firm about Bugle archive page. Basic form created for Bugle advertisers to pay fees online.

Committee Reports (as needed)

Events – Brian Treece
Committee will determine whether the Harvest Dinner should be held.
Finance/Membership – Jessica Wiley
Jessica moved to approve the Equitable Engagement Fund submission and Neighborhood Network Application. Second by Sue. Discussion.
Applying for these dollars is not competitive. We know how much we are applying for and will get the dollars if we meet the requirements. Our Equitable Engagement plan will focus on getting more renters engaged. BMNA will receive \$1790 for 2022. Neighborhood Network dollars available to the BMNA will be \$15,000 for 2022. Motion approved. The Finance Committee does have a plan as the city reduces funding and will talk about that when we propose the draft 2022 budget.

Gateway Project – Karen Frederickson/ Dennis Juillerat

Grateful for all the support for the planting. Putting down mulch for the letters on Saturday October 19. Edging done Thankful for the tremendous neighborhood support.

Parks – Chris Etz/Barry Schade
Meadows moving forward. Final concept plan presented at two open houses in early October. Groundwork started next summer. Sewer work starting late fall 2021. A double pond area will be built and integrated into the design of the park. Appreciative of how responsive the park board has been to input.

Racial Justice – Kate Knuth/McKenzie Erickson/Liv Nielson

A two-part virtual equity/diversity workshop is scheduled for Board members from 10:00am – noon on December 12 and 19. Committee will be discussing the charter amendments with a racial justice lens on October 27.

Safety/Traffic – Chris Etz/Rod Miller
Will write an article for Bugle on Wirth in the Woods traffic. Concerns about traffic from business and homes along the route should be reported to 311.

Schools – Lynda Shaheen

Taste of Anwatin, December, may be on hold because of Covid. Looking for someone who would work with Anwatin on the Craft Fair. Colleen attended the “state of the school” event on September 7 at Bryn Mawr Elementary. It’s a family event with a meal and sharing data about the school including programs offered and applicable test scores. 400 students attending, up from 100 a year ago. Enthusiastic school staff. Excited about the Nature pre-school. School support signs (designed by a student and paid for by the BMNA school committee) are still available. Problems the school is addressing are shortages of buses, a 7:30 start time, and the aftercare program being cut.

Other Standing Reports

ROC/Basset Creek Valley Update
Arts Space building is occupied. Can ask for a tour. Two and three bedrooms available, art space in apartments and in the building.

SWLRT Update. Barry
Putting in pilings for Bryn Mawr station. The budget has been restricted for most amenities. Steve Jensen has put in a concept plan for welcoming art for the station. Being considered by the project planners of the LRT.

Discussion Items, New Business, Updates and Announcements

Rod will coordinate, with Swervo and Ned Abdul, a pre-construction meeting for the 2800 Wayzata development for approximately 16 neighbors who will be most impacted by the project. There was a misunderstanding that the developers were required by city ordinance to hold a public pre-construction meeting for neighbors within 350 ft of a building project. That ordinance only applies to city dwellings from one-four units. The developers agreed to host a pre-construction meeting during the first week of November. Redistricting for political divisions for voting is taking place and could affect Bryn Mawr. Meetings about redistricting will be virtual. Encouraging neighbors to attend. Question about whether we should have a neighborhood position on redistricting. Lynda forwarded the agenda for the October 14 meeting. Buckthorn removal project this weekend at Bassett Creek Park from 1:00 – 4:00. This is one of the BMNA community projects and Utepils has donated drink tokens.
Adjourned at 7:52 p.m.

NEXT BOARD MEETING:
Wednesday, November 10, 2021
Upcoming Events:
Sip and Stroll October 14, 2021
Saturnalia December 11, 2021

The BMNA invites and encourages participation by every resident to each program, service and event organized by the BMNA. Should you require an accommodation in order for you to fully participate, or if you require this document in a different format, please let us know by contacting our neighborhood coordinator at organizer@BMNA.org at least five days before our event.

Bryn Mawr Presbyterian Church Welcomes You!

Adult Ed @ 9:15 a.m.
September-May
at BMPC or on Zoom

Worship @ 10:30 a.m.
Both in person and via Zoom
For in person please wear a mask
Request Zoom Link from info@brynmawrchurch.org

COMPLIMENTARY ADVERTISEMENT In Exchange for BMNA Meeting Space





Redistricting:

Making sure everyone is fairly represented in Minneapolis

After every census, Minneapolis updates the boundaries of its 13 City Council wards and six Park Board districts to reflect new population counts. The Redistricting Group, made up of 24 Minneapolis volunteers, builds the new maps with input from their communities. The Redistricting Group needs your help with the redistricting project to make sure all voices are heard.

The 2021 municipal election is based on the 2010 census maps, but City Council members elected in November will serve a term of two

<http://www.ci.minneapolis.mn.us>

years rather than four. Another City Council election in 2023 will be based on the new maps from the 2020 census. Participate in the redistricting project At www.minneapolismn.gov

Explore the redistricting webpages Draw and submit draft maps. Register for redistricting meetings presenting draft maps for public discussion.

- 4 p.m. Wednesday, Nov. 17.
- 4 p.m. Wednesday, Dec. 15.
- 4 p.m. Thursday, Feb. 24, 2022.
- 4 p.m. Wednesday, March 9, 2022.

Sign up to get notices for all redistricting meetings. Email comments or questions.

SWLRT

Kenilworth Channel is closed between the Burnham Road Bridge and Cedar Lake on Sept. 7, 2021 to prepare for a project that will remove the old wood channel walls and replace them with a naturalized shoreline featuring plants, stone and soil.

First, a contractor hired by the Minneapolis Park and Recreation Board (MPRB) dewatered this section of the channel to prepare for the repair project. While the channel is dry, the City of Minneapolis is replacing an 80-year-old section of sanitary sewer line near the channel. Please visit the Park Lane Sanitary Sewer Improvement project page at www.minneapolismn.gov for more details on that effort. The MPRB will perform channel repair after the sewer project is complete.

Throughout the design process and during construction, City of Min-

neapolis Public Works and the MPRB have coordinated efforts to preserve as much of the existing tree canopy as possible during these projects. This coordination will result in many trees being preserved, however, some tree removal is inevitable. An MPRB tree preservation expert evaluates any trees impacted by these public infrastructure projects to determine if they need to be removed to maintain a safe recreation environment when the channel reopens.

The MPRB and City of Minneapolis will continue to coordinate efforts to protect the tree canopy in Kenilworth Channel as much as possible during the sewer and channel repair projects. At least one tree will be planted for every tree lost during construction.

Kenilworth Channel is scheduled to reopen for winter recreation by December 2021, weather permitting, and water recreation in spring 2022.



Project area dewatered, work begins after City of Minneapolis sewer project



Call Minneapolis 311 for information

Weekdays 7 AM to 7 PM

Weekends 8 AM 0 4:30 PM

Minneapolis 311 is more than a phone number. It's also a 24-hour online resource for access to City services.

Minneapolis311@minneapolismn.gov

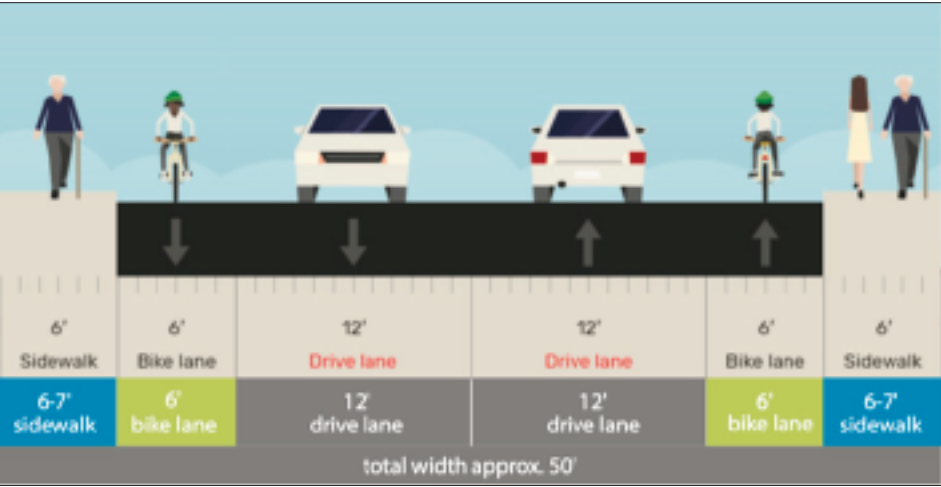
Cedar Lake Road Bridge Replacement

In 2023, the City will replace the Cedar Lake Road bridge over the BNSF railroad in Minneapolis (Area 4 of Bryn Mawr.)

The bridge over the BNSF railroad is a seven span timber beam bridge that was built in 1941. The bridge is 142 feet long and 51 feet wide. The bridge has a sufficiency rating of 'fair' and thus requires a full replacement.

This project proposes to replace the Cedar Lake Road Bridge (MSA route 406) which crosses the BNSF railroad tracks. This bridge replacement will include transportation infrastructure for vehicles,

pedestrians and cyclists. The project will follow the guidance outlined in the Transportation Action Plan and Street Design Guide.



Recycling

Paper, boxes, cardboard

Flatten boxes

Plastic bottles, jugs, cups, containers

Recycle plastics # 1, 2, 5

Glass bottles and jars

Metal cans

Cartons

Cardboard cans

No plastic bags

No bagged recycling

No black plastics

No large plastic items

No random metal items

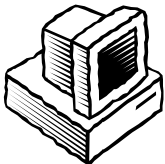
No Styrofoam™

Yard Waste Pick-up

Your garbage day in the week of Nov. 15 is the last 2021 collection for leaves, brush and other yard trimmings. Minneapolis Solid Waste & Recycling customers can set properly prepared yard waste at their alleys or curbs next to their garbage carts by 6 a.m. on garbage day.

Yard waste must be in compostable bags – paper (Kraft) or compostable plastic – or unbagged in a

reusable container 32-38 gallons in size, at least 26 inches high, with sturdy handles. Reusable containers are lifted and emptied by hand; they must be easily managed. Yard waste is not allowed in City-provided containers.



From the Editor

The past couple editions of the Bugle were jam packed and included some last-minute submissions that meant there was no space for my regular column. So the last time I wrote, it was summer and I was in the middle of producing my second musical. At the time I thought things were crazy because I was out of practice after a year-and-a-half of online programs. Little did I know that there is so much more to it.

The level of stress that the collective world is dealing with right now trickles down (or rather pours down) on everything. This is the first week of our in-person after school program. It was always a challenge to keep track of all the details of 100+ kids' needs and balance everything. But now, in addition to being out of practice, there are many new things to take into consideration.

The kids are actually pretty good about wearing masks. But never in my life did I imagine I would be arguing with teachers to enforce a daily seating chart for mixed-grade classes eating snacks together. And of course middle school youth do not like being told what to do so there are buckets of stress and anxiety that come with the constant reminders that things are not back to normal.

I am scheduled for my booster shot in a week and the younger stu-

dents at our school are soon to be eligible to be vaccinated. So I am hopeful. However it is hard to know what the impact will be of people retreating back indoors with the return of cold weather. Parties will happen with food and drink and no masks. It is both easy to lapse into pre-pandemic norms and hard to let go of the self-protection instincts that have kept me Covid free so far.

Here in the neighborhood I have struck a balance of sorts. I attended an art show at Spruce Salon a couple weeks ago. It was a combination of indoor/outdoor and beverage consumers were diligent about putting masks on between sips. The recent Sip & Stroll was planned in a way that celebrated businesses and connected people on sidewalks instead of shoulder to shoulder in small inside spaces. It looks like trick-or-treating is back for Halloween this weekend which is exciting. But no parties on my calendar. The upcoming Saturnalia has always been an outdoor event and I'm sure people will gladly bundle up again.

I guess we all have to find ways to our own inner peace and good health. Work is harder - life is harder - friends are dearer and finding ways to stay safe and sane more of a challenge than ever.

- JoEllyn Jolstad, bugle@bmna.org



Recycling

www.ci.minneapolis.mn.us/
solid-waste
(612) 673-2917

Bryn Mawr Recycling Schedule

	Monday	Tuesday
Area 1	November 1 November 15 November 29	
Areas 4W, 5W, 6, 7	November 8 November 22	
Areas 2, 3, 4E, 5E		November 9 November 23
Use it up, wear it out, make it do, do without. Recycle.		



BE PREPARED:
SNOW SEASON IS COMING

When the City of Minneapolis declares a Snow Emergency, parking rules take effect so plows can clear the streets. Know the rules so you can help crews do a complete job and avoid a ticket and tow.

Remember to shovel sidewalks and around garbage carts
It's the law and the neighborly thing to do.
www.minneapolismn.gov/snow/shovel

Stay informed

- ▶ Call 311 or 612-348-SNOW (7669)
- ▶ Go to www.minneapolismn.gov/snow for more detailed information, and to sign up for text, email and phone alerts
- ▶ Follow Minneapolis Snow Emergency on Facebook and Twitter
- ▶ Download the updated Minneapolis Snow Emergency smartphone app.



612-377-3740

2218 LAUREL AVENUE • MINNEAPOLIS, MN 55405

NORTH END HARDWARE



EXCEPTIONAL
SERVICE

Winter is coming!

Bring your
snow blower
in for service
and
maintenance.
Pick up and
delivery available.
Give us a call.



TORO • SNAPPER • LAWN BOY
SNOW BLOWER / LAWN MOWER SALES & SERVICE
NORTH END HARDWARE & RENTAL
at PENN & LOWRY
Darryl Weivoda, Owner
(612) 529-9151 Northendhdwr@aol.com



Bugle Notes

Area 2

For the last few years, Neighbor, Robin Brown from Area 2 has been learning and creating functional fused glass pieces. This year, her fused glass pieces will be included in the "2021 Arts of the Holidays Show and Sale" at Minnetonka Center for the Arts, 2240 North Shore Drive, Wayzata. The show and sale runs from October 29 to December 23. The Holiday Show and Sale features art and fine craft items from nearly 100 artists. It is a great opportunity for holiday shopping while supporting local artists.

Buckthorn Busters!



Over 50 neighbors and friends turned out to participate in the Friends of Bassett Creek buckthorn pull on Saturday October 16th. The event was sponsored by the MPRB, Bassett Creek Watershed Commission, Bryn Mawr Soap Co., Bryn Mawr Neighborhood Association, Harrison Neighborhood Association, Friends of the Mississippi River and Utepils. For more information or to be notified by email of future events contact Anna.migration@gmail.com



Thanks to neighbor Steve Kotvis who has spearheaded the buckthorn removal at Cedar Lake in conjunction with the Minneapolis Parks and Recreation Board and the Cedar Lake Park Association.

After a few months of the process to eradicate buckthorn from Cedar Lake Point Beach, a first small area (not so poetically named "Demonstration Area A") close to the parking lot on the south shore of the peninsula had been made ready for new planting and seeding of 300 plants. This is the first of three Demonstration Areas established in the park that is a part of the process to establish and nurture a healthy ecosystem for the park and beyond. Cedar Lake Park Association is financially supporting the replanting of these Demonstration Areas.

Working to End Family Violence:
Domestic Abuse Project (DAP)

This month, while answering phones for the Domestic Abuse Project (DAP), a young woman tearfully related how her estranged partner was stalking her from the street in front of her apartment, and through tears, spoke of her fear for her and her child's safety. I wondered how bad it must be to pour out your fears to a stranger. As I connected her with an advocate who would help her obtain an order for protection, I felt great relief knowing that DAP was there to support her.

I was able to see "What the Constitution Means to Me" by Heili Schreck, at the Guthrie last week. It was so compelling. Some dialog that really hit me: "As you may already know, and if you don't know you should read more, four women are murdered every day in this country by a male partner... One in four girls will be sexually abused before they turn 18... And 10 million American women currently live with violent male partners."

In the United States, an estimated 10 million people experience domestic violence every year. According to the National Coalition Against Domestic Violence, about 20 people per minute are physically abused by an intimate partner. About 1 in 4 women and 1 in 9 men experience severe intimate partner physical violence, sexual violence, and/or partner stalking with injury.

Extra stress in the COVID-19 pandemic caused by income loss, and lack of ability to pay for housing and food has exacerbated the often silent epidemic of intimate partner violence, suggests a new University of California, Davis, study.

Lele — her full name is not being used for her safety — told the New York Times that her husband had abused her throughout their six-year relationship, but that the CoVid-19 outbreak made things far worse.

"During the epidemic, we were unable to go outside, and our conflicts just grew bigger and bigger and more and more frequent," she said. "Everything was exposed."

We are fortunate in Minneapolis to have DAP in our city. DAP continues to support clients during CoVid.

At DAP, therapists and advocates work with families to end the cycle of abuse. They seek to permanently break the inter-generational cycle of family violence by providing men, women and children with essential tools needed to eliminate violence in their lives.

DAP advocacy supports victims as they navigate the legal system and connects them to resources a victim often needs in their moments of crisis.

DAP therapy is for men, women and children who are at a place in their lives when they can make real changes in their behaviors. "When my mom came here [DAP], she was sad. Thank you for helping her. I love my mom." -Hannah, age 5.

In 1979, DAP was the first organization in MN to offer a therapy program for men who use abuse in their intimate relationships. Since then, DAP has worked to not only heal but to prevent – as their work with children is truly preventative. Without intervention, children who witness domestic violence are 64% more likely to grow up to be abusers or victims.

DAP has a budget of roughly \$1.9 million dollars, which funds programs and services such as:

- The Intervention and Prevention Program for Men – using trauma informed therapy to teach men about the cycle of domestic violence and how to stop their use of abuse.
- The Victim Survivor's Program – supporting women (and children birth to 18) on their journey of healing from the traumatic effects of abuse.
- Providing crisis intervention services for families who are trying to escape the abuse present in their lives and/or navigate the criminal justice system as an abuse victim.

For more information about DAP and to support them, visit www.DomesticAbuseProject.com.

- Jessica Wiley has been a volunteer at DAP since 2013.



1200 Glenwood Ave. N.
Minneapolis, MN

612-377-4900

www.northwesterntire.net

TIRE SALE

\$10 OFF

COUPON
Most vehicles. Must present coupon. Cannot be combined with other offers. Plus tax, shop supplies & environmental fees. Expires 12/1/2021.

WIPER BLADES

\$11⁹⁵

COUPON
Most vehicles. Must present coupon. Cannot be combined with other offers. Plus tax, shop supplies & environmental fees. Expires 12/1/2021.

TIRE ROTATION

Free with Oil Change

COUPON
Most vehicles. Must present coupon. Cannot be combined with other offers. Plus tax, shop supplies & environmental fees. Expires 12/1/2021.

We Have All Brands of Tires

We Repair ALL Flats

COUPON
Most vehicles. Must present coupon. Cannot be combined with other offers. Plus tax, shop supplies & environmental fees. Expires 12/1/2021.

Service Special

\$10⁰⁰ OFF Any Service Over \$100

\$20⁰⁰ OFF Any Service Over \$200

\$50⁰⁰ OFF Any Service Over \$500

COUPON
Most vehicles. Must present coupon. Cannot be combined with other offers. Plus tax, shop supplies & environmental fees. Expires 12/1/2021.

We Repair All Vehicle Types

Stop in for a FREE estimate

Major Improvements Set to Begin in Bryn Mawr Meadows

Following three open houses held at Bryn Mawr Meadows in recent months, the Minnesota Park and Recreation Board is now prepared to implement long-awaited improvements to the park in 2022. The Concept Plan for the reconstruction of the park follows the Master Plan and incorporates input received by MPRB staff from the open houses and surveys. Many of the items requested and concerns expressed by the neighborhood are reflected in the Plan.

The Plan (see illustration) includes two large stormwater ponds near the northern edge of the existing parking lot off Laurel Avenue West. This stormwater project is being lead and paid for by the Bassett Creek Watershed Management Commission and is a product of several years of collaboration between the MPRB, the Watershed, and the City of Minneapolis.

A mainstay of the Plan is the idea of breaking up the existing large areas of mowed turfgrass with native plant materials. A wide native landscape “greenway” will run from north to south along the Luce Line Trail, the ponds, a nature discovery trail, the park entry drive, parking lots, the broomball meadow, and the southern trail corridor. The native landscape greenway significantly increases biodiversity with the park; increases habitat for insects, pollinators, small

mammals, and birds; filters stormwater from paved surfaces; captures and stores carbon through sequestration; reduces regular mowing and use of fossil fuels; and is aligned with the changing aesthetic parkgoers are consistently requesting.

The Plan also includes the reconstruction of several athletic fields, trails, play area, splash pad, picnic shelters, park building, basketball

court, broomball and open skate areas, batting and cricket bowling cages, one-mile trail loop and fitness space, parking lots, bike park, and open free field spaces.

The park’s 13 ball diamonds will be reduced to six. These six new diamonds are spaced more appropriately and set within large open field spaces where two of the six share turf area with soccer fields or cricket

fields. Two of the ball diamonds are premier fields that are lit and fully fenced. The other ball diamonds are not lit and only have backstop fencing. A set of batting cages is incorporated with one of the premier fields. There is space for one adult sized and two youth sized soccer fields. There are two cricket fields, the northern field is full size, and the southern field is slightly smaller. The



Bryn Mawr Neighborhood Association Calendar - November 2021

All meetings are open - everyone is welcome. Neighbors are urged to attend and participate in meetings and activities of special interest to them.
Bryn Mawr Neighborhood Association and its committees meet at Bryn Mawr Elementary School during the school year, unless otherwise noted.

Sunday	Monday	Tuesday	Wednesday	Thursday	Friday	Saturday
	1	Election Day 2	3	4	5	6
7	8	9	BMNA Monthly Meeting 6:30pm on Google Meet. Email coordinator@bmna.org for joining information. 10	11	12	13
PTA Fall Coffee Fundraiser, Nov 14-24. See details and order form on page 11 14	15	16	17	18	19	Submissions due for Nov. Bugle. Drop in the Bugle Box at Bryn Mawr Market or email bugle@bmna.org 20
21	22	23	24	Thanksgiving Holiday 25	26	27
28	29	30	Save the Date! Saturnalia Winter Festival Saturday, December 11th, 4:00-8:00pm In downtown Bryn Mawr			

cricket experience will be improved by expanding the size and playability of the fields.

Several of the trails will be improved, including better access throughout the park and through the park from the neighborhood to the new LRT stations to the east and south of the park. The park will be a conduit for commuters going to and from the LRT stations. Over 1,500 lineal feet of degraded gravel trail has already been preemptively paved by project partners to help with this access.

A new play area will be situated near the existing play area and made accessible using modern materials and equipment meeting current safety standards. Nature play and nature themed equipment and experiences have been requested during the community engagement process. This play area as well as the nature discovery trail will allow for interactions with nature inspired design.

A larger picnic shelter will be included near the main parking area and within an open field area. It will be nearby the parking area to discourage vehicles driving through the park to access it. Also near the main parking area is a space for a future park building.

The basketball court is reconstructed in a new location that is more central to the active park spaces and near the main parking lot. It is separated from the play areas, but still nearby. Court striping may accommodate other court sports.

This park project will create a new approach to winter broomball and the operation of the space it sits on. Instead of siting the broomball and open skating ice surface over an athletic field as is currently done, the ice surface will be spread over an open flat meadow with a slight earthen berm surrounding it. The broomball meadow is achieved by the reorganization of athletic fields and the reduction of ball diamonds from 13 to six. The design team was able to utilize the changing trends in field types from diamonds, which are not complimentary to overlapping uses, to field sports like cricket and soccer, which are complimentary. Open skating will also be incorporated. In the

summer the rink area will be an open natural meadow planted with species capable of regenerating after yearly late fall mowing and sustaining regrowth in frozen conditions. The meadow would be a welcoming space for insects, bees, and birds.

A one-mile trail loop and adult fitness space is included. Users will be able to track their runs and walks around the trail loop using marked distances and stop at stations or spaces and use fitness equipment. The fitness equipment would be focused on simplicity and minimal maintenance. Spaces could be made that accommodate pull-up bars, box jumps, open soft stretching and yoga space, battle ropes, tire flips, balance beams, crunch benches, dip bars, etc.

Both parking lots will utilize modern stormwater BMPs to minimize environmental impacts, but also to create a softer more attractive place. Parking surfaces may be permeable and drain to filtration areas prior to entering the stormwater sewer system and Bassett Creek. Parking stalls will be limited to 99, which is a 20% reduction from the current parking space count. The parking lots are split and push further into the site and closer to the athletic fields. Most visitors that come to the park by personal vehicle are athletic field users. Providing parking nearer the fields means less vehicles congesting neighborhood streets and less visual and noise impacts to the neighborhood when league players congregate before or after a game.

The bike skills equipment currently sitting atop the tennis courts will be moved to the northeastern area of the park and incorporated with other bike park features. The term bike park encompasses several features or activities related to bicycling off-road for all abilities and all ages from toddlers to seniors. This includes bike skills features, pump tracks, jump lines, and natural surface trails. The proposed location is highly suitable for this inspiring play and skill building activity. It is located directly adjacent to the Luce Line Regional Trail between the Cedar Lake Trail and the paved and natural surface trails at Theodore Wirth Regional

New Bryn Mawr Spirit Wear for Holiday Gift Giving



Show your pride in the neighborhood AND support the Neighborhood Association at the same time! All proceeds from sales go right back into supporting the Bryn Mawr Neighborhood Association's operations and initiatives. Order online at bmna.org/store or contact coordinator@bmna.org 612.234.7819.

Park. The existing modular equipment can be re-installed within the woodsy landscape which provides softer edges and more attractive spaces over the harsh, paved and fenced tennis court. Bike parks provide opportunities for young kids to develop bike handling skills and bike confidence.

Not everything noted in the concept plan is able to be constructed with the current funding allocation. Future allocations will be necessary to build out future phases. The first phase improvements are shown on the attached Illustration and will begin in 2022.

- Chris Etz, Area 4 & Barry Schade, Area 6

Prepared and Paid for by Friends for Lisa Goodman

LISA GOODMAN

7th Ward City Council

Minneapolis Neighbors Endorse





Bryn Mawr Neighbor Margaret Anderson Kelliher

"Lisa's leadership comes from both her head and her heart. She is a advocate for some of our city's most progressive issues such as affordable housing, but also brings a practicality and steady hand to our city at a time when we need it most. During this pivotal moment, I support Lisa Goodman's re-election to the City Council."



Bryn Mawr Neighbor Scott Graham

"I strongly endorse Lisa Goodman's re-election because she has always responded to me every time I have reached out to her, whether to help fulfill a request or to explain things to me. What Lisa brings to the city is: honesty, backbone, guts and practicality."



Bryn Mawr Neighbor Vida Ditter

"I have worked directly with Lisa on various neighborhood development projects. She stands up for us, she appreciates us and supports and respects our work. That's why I'm voting for Lisa."



Senator Tina Smith

"Lisa and I worked together for many years first in the pro-choice movement and then we worked closely together at City Hall. I know her to be a hard-working, constituent focused progressive leader. Her leadership is exactly what we need at this pivotal moment in the City's history. I proudly support her in this election!"

"Lisa has shown her leadership time and again throughout this last year, and has made it a staple of her office to listen to every single constituent. Lisa listens and responds with specifics. She and her staff respond quickly and specifically to all comments and requests. I'm looking forward to casting my vote for Lisa Goodman this November."

Bryn Mawr Neighbor Kai Michels



Bryn Mawr Neighbor John Dunlop

"Lisa has taken strong stands on tough issues that have resulted in a better quality of life in Minneapolis. She excels in connecting with her constituents and considering our positions on issues that are very important to us."

Have you joined yet?

Bryn Mawr Neighborhood Association Membership - 2021

The BMNA does not charge dues. Please consider making a financial contribution of \$50 or more along with your membership. *BMNA is a 501C3 tax deductible organization.*

Yes, I want to help the BMNA by making a financial contribution of:

 \$50 \$75 \$100 Other

Name(s): _____

Address: _____

Phone: _____

E-mail: _____

Help us save postage by including your email address – we'll send your receipt to your inbox. If you don't have an email account, no problem, we'll still promptly mail your receipt. Check should be made payable to BMNA. For security please do not leave memberships at the Market.

Please mail to: Bryn Mawr Neighborhood Association
2915 Wayzata Blvd.
Minneapolis, MN 55405-2145



Parks

www.minneapolisparcs.org

Next Cedar-Isles Master Plan meeting is Tuesday, November 9

The Cedar Lake-Lake of the Isles Master Plan (Cedar-Isles Master Plan) will guide improvements and stewardship at Cedar Lake, Lake of the Isles, Dean Parkway and surrounding parkland, parkways and trails for the next 20+ years.

The project launched in November 2019 and the first phase of gathering community and stakeholder feedback wrapped up in summer 2021. People shared their broad opinions, thoughts, ideas, hopes and concerns for parkland in the Master Plan area through numerous methods, both online and in-person.

Thank you to everyone who has participated so far! Themes and Findings from the community input has been documented in the Community Engagement Summary Report at www.minneapolisparks.org

The next project Community Advisory Committee (CAC) meeting is scheduled Tuesday, Nov. 9, 6-8 pm. Cedar-Isles project team members will facilitate a design workshop for initial sketches and diagrams with CAC members. Members of the public will be invited to participate in portions of the workshop.

The meeting will be open to everyone and hosted online via Zoom. More information and link at www.minneapolisparks.org

**Minneapolis Audubon Society
Presents:**

NATURE AT OUR DOORSTEP
Matt Schuth and Julie Brophy
Friday, November 12, 2021 1 pm

Join us for stories with Matt Schuth, longtime naturalist at the University of Minnesota Landscape Arboretum, and author of the award-winning book *Nature at Our Doorstep*. In addition to sharing entertaining experiences from his career and book, Matt will bring

along several nature specimens, discuss spring bird-watching opportunities, and have copies of his book available for sale and signing. Matt will be joined by Julie Brophy, an experienced local birder who has engaged young people in birding as a co-leader for Minnesota Youth Bird Club (MYBird Club) and as an educator for the K-12 curriculum Journey North.

Biosketches: Matt Schuth has been associated with the University of Minnesota Landscape Arboretum since 1982 and has worked at a variety of roles including managing the maple syrup production, working on wetland projects with graduate students, and helping to prepare and maintain research plots. He has established bluebird trails, wood duck houses, and osprey nests, and recorded sightings of bird, mammal, and butterfly species for the Arboretum. He continues to write about the natural world for the Arboretum Magazine and do many nature walks and talks. He is the author of the award-winning book, *Nature at Our Doorstep*.

Julie Brophy has engaged thousands of students and teachers in learning about the seasonal migration of birds and other species in her work at Journey North, a K-12 online education program. A passionate local birder and Naturalist herself, Julie has also been a co-leader of bird and nature walks at the Minnesota Landscape Arboretum and a co-leader of MYBirdClub programs for youth as well.

All are welcome for the Minneapolis Audubon Society meeting at the Bryant Square Neighborhood Center, 31st & Bryant Avenue S, just one block south of Lake Street, easily accessible via the #4 bus, which runs every 15 minutes. For more information call 763-533-8381



Help Wanted

Area 4 Bugle Distributor

The current distributors have moved out of the neighborhood. Help ensure that all the residents of Area 4 get their BMNA News in a timely manner.

Responsibilities include taking delivery of all Area 4 Bugles once a month and getting them to block distributors who circulate to neighbors. If you're interested, email bugle@bmna.org.

FURTHER
performance 

VW · AUDI · EURO · CLASSIC

- MAINTENANCE
- RESTORATION
- PERFORMANCE

NEW LOCATION

305 THOMAS AVEN., MINNEAPOLIS

612-374-2604

FPTUNED.COM



November 10, 2009 Sixth consecutive sunny day with high in the 60s—a beautiful stretch of Indian summer.

November 19, 2021 Full moon, the Ojibwe Gashkadino Giziz or freezing moon.

November 18, 2016 First frost, the latest date ever recorded at MSP airport and the longest growing season (220 days between frosts).

November 13, 2005 Red fox trotting along Hawthorne Avenue at 10 pm. Foxes have been moving into urban areas, including Bryn Mawr, and adapting to humans. The University of Minnesota has been studying this and collecting observations, photographic preferred

November 20, 2002 Brown fields, green lawns. This is the average date of the first continuous snow cover here. Jack rabbits develop their white winter coats about this time.

Loppet Foundation’s Winter Festival Celebrates its 20th Anniversary

Registration is now open for the Loppet Foundation’s City of Lakes Loppet Winter Festival, to be held February 5-6, 2022. The multi-day winter festival has become a Minneapolis staple for celebrating the wonder, adventure, and fun of the winter season in Minnesota.

Most of the City of Lakes Loppet Winter Festival events will be centered in Theodore Wirth Regional Park on the border between North Minneapolis and Golden Valley. The weekend-long festival includes events and races for all ages, abilities and interests, including skiing, fat tire biking, skjoring, snowshoeing, the Luminary Loppet, Kubb tournaments and more.

Celebrating the 20th Anniversary

The City of Lakes Loppet started in 2003 as a unique urban point-to-point cross-country ski race. Since then, the event has evolved and adapted to engage a growing community of outdoor enthusiasts. The Loppet Foundation is proud to host a winter festival that has events and races for all to enjoy. In celebration of the event’s 20th anniversary, The Loppet Foundation will be giving participants and spectators unique opportunities leading up to the festival and during festival weekend - more to be announced in the upcoming months.

Back in 2022 is the Luminary Loppet on Lake of the Isles! Attendees of the Luminary Loppet can walk, ski or snowshoe through a serene landscape of 1,200+ glowing ice luminaries in the heart of Minneapolis’

Uptown. After having to drastically scale back the event in 2021 held at Theodore Wirth Park, the Loppet Foundation is excited to again host this magical evening (and the organization’s largest fundraiser) on Lake of the Isles with a full set of luminary features and party.

For more information, and to register for festival events, visit the Loppet Winter Festival website.

ABOUT THE LOPPET FOUNDATION:

Established in 2002 with an 800-person ski race, the Loppet Foundation is a 501(c)3 non-profit that now welcomes 20,000 participants annually to its events and programs. The Loppet Foundation creates a shared passion for year-round outdoor adventure in the Minneapolis area, focusing on underserved youth and families. This year, the Loppet Foundation brought outdoor experiences to more than 1,300 kids from underserved communities - third graders to high school seniors - through our partnerships with 17 Northside schools and Loppet Adventure Camp. Activities include skiing, mountain biking, paddling, running and more.



City of Minneapolis Curfews

Under 12:
Sun-Thurs 9 pm,
Fri-Sat 10 pm.

Ages 12-14:
Sun-Thurs 10 pm,
Fri-Sat 11 pm,

Age 15-17:
Sun-Thurs 11 pm,
Fri-Sat 12 midnight

Kate's Kanine Kamp

Boarding, Walks, Day Care, Big Fun!

Kate Hurley
(612) 377-7240
Schedule a Meet & Greet
Bryn Mawr Location
References Available

Bryn Mawr Soap

On sale at Bryn Mawr Market
and Twin Cities area co-ops

www.brynmawrsoap.com 612-374-3613

Your wedding dance, holiday party or event can be the very BEST!

LIVE music is more FUN!

www.percolatorsband.com

Click, call, come see us LIVE! We'll rock your socks off!
Hans Gasterland, drums. Call today: 612-723-5038

Organics recycling

All food

Food-soiled paper

Certified compostable products

Look for the BPI logo on certified products.

Other compostable items

Window Washing

Window washing, inside and out!
"You'll see the difference!"

Call Larry
651-635-9228

20/20 Cleaning Family Owned & operated for more than 20 years
https://www.2020cleaningspecialists.com

JIM TOLLEFSRUD

PIANO TUNING & REPAIR

612 377-8345

608 South Cedar Lake Road
Minneapolis, Minnesota 55405

Be part of the Bugle!

Email your neighbor news to bugle@bmna.org Market.

SUPPORT THE BMNA!

We have some of the cheapest rates around!
Why don't you advertise in the Bugle?!!

Display Ad Rates	Page Size	Resident	Non Resident
Full Page	10"w X 16"h	\$260	\$300
Half page, horizontal	10"w X 7 7/8"h	\$135	\$155
Half page, vertical	4 7/8"w X 15 1/2"h	\$135	\$155
Quarter page, horizontal	10"w X 3 7/8"h	\$70	\$80
Quarter page, vertical	4 7/8"w X 7 7/8"h	\$70	\$80
Quarter page, 3-column	7 3/8"w X 5.25"h	\$70	\$80
Quarter page, 1-column	2 3/8"w X 16"h	\$70	\$80
3-column, 1/4 high	7 3/8"w X 3 7/8"h	\$50	\$65
Sixth-page vertical	4 7/8 x 6 3/8	\$50	\$65
Eighth page, horizontal	4 7/8"w X 3 7/8"h	\$35	\$45
Business Card, horizontal	4 7/8"w X 2 3/8"h	\$25	\$30
Business Card, vertical	2 3/8"w X 3 7/8"h	\$25	\$30
Inserts	8.5"w X 11"h	\$145	\$170

(Inserts must be printed by you, double or single-sided.)

Color Now Available!

\$80 each color
Does not include ad placement fee. Some production costs may apply.

Ads are due the 20th of each month and should be camera-ready and paid in advance.
For more information contact Deryck (377-8968) advertising@bmna.com



Youth & Schools

Contact Information For Community Schools

Bryn Mawr Elementary (PreK-5)
252 Upton Avenue South
612-668-2500
brynmawr.Minneapolis.k12.mn.us

Minneapolis Kids School-age Childcare (at Bryn Mawr School)
612-668-3890
mplskids.Minneapolis.k12.mn.us/

Anwatin Middle School (6-8)
International Baccalaureate and Spanish Dual Immersion
256 Upton Avenue South
612-668-2450
anwatin.Minneapolis.k12.mn.us

Anwatin Community Education
612-668-2470
commed.mpls.k12.mn.us

PTA Coffee Fundraiser

November 14th - 24th, 2021
The Bryn Mawr PTA is selling coffee, cocoa and other treats to raise money to support the school. Order online at brynmawrpta.org starting on Nov. 14th or return the printed form on page 11 and payment to Bryn Mawr School - 252 Upton Av S. Orders are due November 24. Pick up is at the school December 15 & 16, 4-6pm. Details on the next page or email ptabrynmawrmn@gmail.com.

Bike Fleet Maintenance

Rad Power Bike Volunteers Annie and Dan did maintenance on the Bryn Mawr Elementary schools bike fleet on Wednesday October 20th. They spent the entire day at school getting the bikes ready for the students.
- Anita Chavez, PE Teacher, Bryn Mawr Elementary





Halloween Recycling Tips

The amount of waste for Halloween is downright spooky! Keep it to a minimum by recycling and reusing.

Recyclable

- Plastic Bottles
- Soda Cans
- Plastic Cups
- Clean Paper Plates
- Cardboard

Reuse or Donate

- Halloween Toys
- Costumes
- Decorations

Throw Away

- Candy Wrappers
- Makeup

Compost

- Pumpkins
- Corn on the Cob
- Dirty Paper
- Dirty Plates
- Napkins

Visit [RecyclingSimplified.com](https://www.RecyclingSimplified.com) to learn more about recycling.
*Recyclable materials different depending on location and processing.

DWI


CRIMINAL DEFENSE

24 HOUR HELP


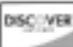


- TESTING ADVICE • BAIL • JAIL RELEASE •
- DETOX RELEASE
- DRUGS

OVER 30 YEARS EXPERIENCE

SUPER LAWYER
2006 through 2016



GERALD MILLER, P.A.
LAWYER



FREE INITIAL CONSULTATION

612-341-9080

Fall Coffee Fundraiser 2021

November 14th - 24th, 2021

PRODUCTS

Coffee \$14.00 12 oz. bag
Scandinavian Blend

One of our best-selling Full City Roast blends. A taste pleaser for everyone. Light syrupy body, with very smooth taste and clean finish.

Mexican – Dark Roast
Medium bodied, with a slight hint of almond, chocolate and clove.

Peru Organic Fair Trade (OFT)
A delightful, mildly acidic coffee with a medium body and smooth notes of fruit and nuts.

House Decaf
Beautifully balanced blend of decaf medium roasted coffees. Medium bodied with full taste.

Highland Grogg
A wonderful mix of butterscotch, rum and vanilla flavors. Extremely popular.

Vanilla Cream
Smooth and rich with strong vanilla notes. Very comforting.

Double Dutch Hot Cocoa \$14.00 2 lbs bag
Hands down, the best rich and creamy hot cocoa out there. Mix with milk or hot water and enjoy! Marshmallows encouraged.



Chocolate Covered Espresso Beans \$6.50 4 oz. bag

Delicious Espresso Beans or Salted Caramels enrobed in a triple coating of dark, sweet, elegant and exquisite chocolate. Beware they are addictive!

HOW TO ORDER

ORDER DATES: November 14-24.
- Order Online at brynmawrpta.org starting on Nov. 14th.
or
- Return form (printed below) and payment to Bryn Mawr School - 252 Upton Av S.

PAYMENT OPTIONS:
Cash or checks (payable to Bryn Mawr PTA) - drop off with order at Bryn Mawr School

Paypal.me/bmpta
Or ptabrynmawrmn@gmail.com

Venmo: Bryn Mawr PTA

PICKUP DATES: Dec. 15 & 16, 4-6pm
at Bryn Mawr school.

Contact PTA:
Email: ptabrynmawrmn@gmail.com

State launches ‘Kids Deserve a Shot’ vaccine incentive program for 12-17 year olds

Gov. Tim Walz has announced the launch of “Kids Deserve a Shot,” a vaccine incentive program encouraging Minnesotans 12-17-years-old to get fully vaccinated against COVID-19. The program consists of two sets of rewards: a \$200 Visa gift card for 12-17 year olds who start and complete their vaccine series over the next six weeks, and five drawings of \$100,000 Minnesota college scholarships for any Minnesotan 12-17 years old with a complete vaccine series.

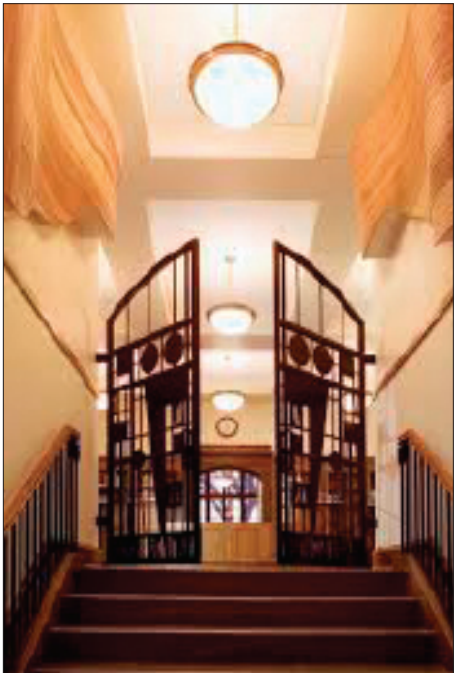
The “Kids Deserve a Shot” program comes as the State continues to drive vaccination efforts and awareness across Minnesota, with a focus on boosting vaccination among this least-vaccinated age group. It is designed to encourage teenagers to get vaccinated and increase vaccination rates among adolescents. Currently, only 50% of Minnesotans 12-15 and less than 60% of Minnesotans 16-17 are fully vaccinated, the lowest vaccination rates of all eligible age groups.


Expanded Hours at Hennepin County Libraries

New Sumner Library hours:

Sunday 12-5pm
Monday 12-8pm
Tuesday 9am-5pm
Wednesday 9am-5pm
Thursday 12-8pm
Friday 9am-5pm
Closed on Saturdays.

You can view the new hours of all Hennepin County Libraries at hclib.org/about/locations



	BRYN MAWR ELEMENTARY SCHOOL						12 oz. Coffees \$14.00/bag										Hot Cocoa (2lb) \$14.00 each		Chocolate Covered Beans or Caramels \$6.50/ 4oz. Bag				GRAND TOTAL
															Total Dollar Amount for \$14.00 Items	Total Dollar Amount for \$14.00 Items	Chocolate Covered Beans	Chocolate Covered Caramels	Total Dollar Amount for \$6.50 Items				
	Vanilla		Highland Grogg		Organic OFT Peru		Mexican Dark		Scandinavian Blend		Breakfast Blend		House Decaf							Item Total			
	Ground	Whole Bean	Ground	Whole Bean	Ground	Whole Bean	Ground	Whole Bean	Ground	Whole Bean	Ground	Whole Bean	Ground	Whole Bean									
Name & Phone Number	Ground	Whole Bean	Ground	Whole Bean	Ground	Whole Bean	Ground	Whole Bean	Ground	Whole Bean	Ground	Whole Bean	Ground	Whole Bean									
Return form and payment to Bryn Mawr School by Nov. 24.																							

EXPLORE

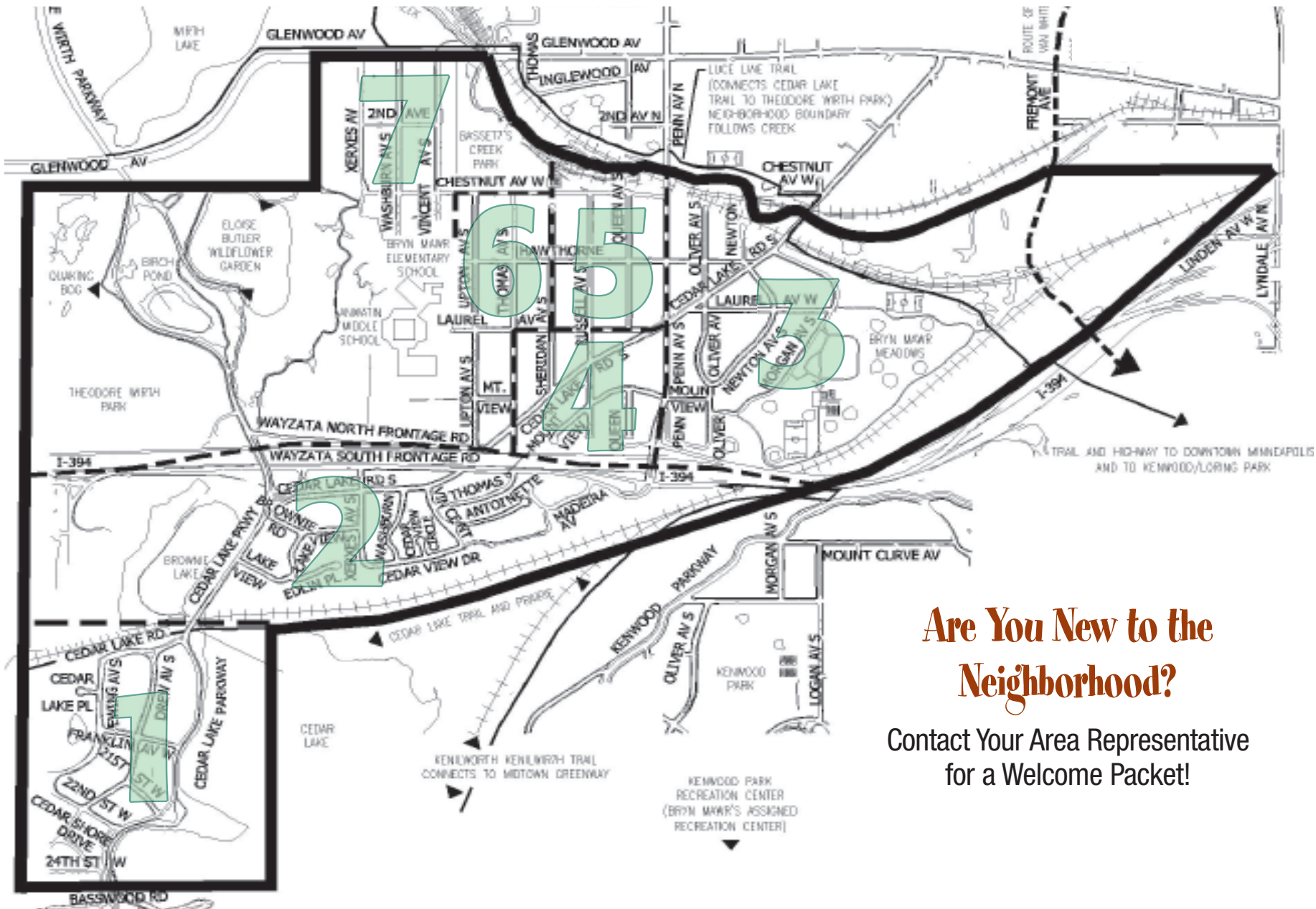


MINNEAPOLIS PUBLIC SCHOOLS

Learn More About Our Community Schools

Bryn Mawr Community School (PreK-5)
brynmawr.mpls.k12.mn.us
Call 612-668-2500 to arrange a tour.

Anwatin Middle School (6-8)
International Baccalaureate
anwatin.mpls.k12.mn.us
Visit the school website to sign up for a tour or call 612-668-2450 for more information.



Are You New to the Neighborhood?

Contact Your Area Representative
for a Welcome Packet!

THE BRYN MAWR NEIGHBORHOOD ASSOCIATION

2915 Wayzata Boulevard, Minneapolis, MN 55405

BMNA Board Members

President:	
Kevin Thompson president@bmna.org	612.296.5409
Vice President:	
Brian Treece vicepresident@bmna.org	763.229.3663
Co-Treasurers:	
Deb Anderson treasurer@bmna.org	612.865.8327
Roberta Jordan treasurer@bmna.org	612.377.6086
Secretary:	
Jessica Wiley secretary@bmna.org	612.374.3481

Area Representatives

1 Scott Graham scott.graham@bmna.org	612.597.7778
Liv Nielsen liv.nielsen@bmna.org	612.719.9734
2 Karen Frederickson karen.frederickson@bmna.org	612.558.1910
Susan Verrett susan.verrett@bmna.org	612.377.7447
3 Allison Fruen allison.fruen@bmna.org	612.708.2135
Denny Juillerat dennie.juillerat@bmna.org	612.850.5658
4 Christopher Etz christopher.etz@bmna.org	612.378.2987
Joanne Michalec joanne.michalec@bmna.org	612.377.3348
5 Bridget Bergheger bridget.bergheger@bmna.org	630.359.1039
Colleen Dhennin colleen.dhennin@bmna.org	763.639.1868
Beth Turnbull beth.turnbull@bmna.org	612.423.3033
6 Rod Miller rod.miller@bmna.org	612.377.9235
Jay Peterson jay.peterson@bmna.org	612.377.4677
Barry Schade barry.schade@bmna.org	612-203.1758
7 Steve Harvey steve.harvey@bmna.org	612.374.3613
Kate Knuth kate.knuth@bmna.org	651.308.9921
Anthony Ramirez anthony.ramirez@bmna.org	612.516.2177
Board Member Emeritus: Vida Ditter	612.374.1481

The Bryn Mawr Bugle is an open-forum newspaper published by the Bryn Mawr Neighborhood Association. Content is based entirely on volunteer submissions which may be emailed to bugle@bmna.org. Articles and letters to the editor will be printed at the discretion of the Editor. The Bryn Mawr Bugle is published every month except January. Distribution is free to Bryn Mawr residents; copies are also available at the Bryn Mawr Market, Bryn Mawr Mobil and Cuppa Java. Subscriptions are \$21 per year. Opinion articles represent the opinion of the writer, not necessarily those of the Bryn Mawr Neighborhood Association or the Editor of the Bugle. The Bryn Mawr Bugle prints letters to the editor as space allows. Letters may be edited for length without altering the letter writer's message. Letters must be signed by the person who wrote them. Under the law, letter writers, like journalists, may not commit libel, be obscene, reveal names of juveniles accused of crime, invade personal space, or incite to riot.

Copy deadline for the December issue is **November 20!**

Display & Classified Ads are due November 20th. Ads must be pre-paid & camera ready.

Call Deryck Jolstad at (612) 377-8968 or djolstad@msn.com for rates.

GENERAL ADVERTISING POLICIES: All ad copy is subject to approval by the paper, which reserves the right to reject or request changes to an ad. Ad placement does not imply endorsement by the BMNA. The advertiser, not the paper, is responsible for the truthful content of the ad. Readers use service/product providers at their own risk and are solely responsible for checking references, state agencies, BBB, etc.



Want Ads

Rates: \$4.50 minimum (4 lines, approx. 40 characters per line), \$.50 per additional line. **FREE** ads for lost, found, free items, pets & youth ads. **Due Date:** 20th of preceding month. **Instructions:** No ads over the phone please or accepted without payment. Drop off in the Bugle Box at the Bryn Mawr Market or email bugle@bmna.org.

Be sure to check references, State Agencies, BBB, etc. and inquire about bonding when using any new service.

SERVICES

CONCRETE/BRICK/STONE/MASONRY: Repair or New - foundations, driveways, sidewalks & steps, garage slabs, also kitchens & bathrooms. Call Gary 651-423-6666.

LAWN CARE, TREE & SHRUB TRIMMING: Premier Lawn & Snow, Inc. providing reliable lawn care, tree and shrub trimming with quality results for SW Minneapolis since 1987. For prompt estimate call Dennis (952) 545-8055.

WANTED

Looking for historical photos, documents, stories, illustrations, etc. pertaining to Cedar Lake's west side for personal research. I am an Area 1 resident and while my interest is broad, I am particularly focussed on anything that pertains to West 21st Street. email: roger@remvideoevent.com with 'Cedar Lake' in the subject line.

YOUTH SERVICES

LOOKING FOR A PET SITTER? I have previous experience fostering dogs and have 2 dogs myself. I love all animals and would be happy to care for them. Whether it's feeding your hamsters while you're away, taking your dog(s) on a walk, playing with the cats... I can do it. You can email me, at emilymw2004@gmail.com if you'd like me to clarify anything or figure out the details.

NEED A RELIABLE BABYSITTER? Call Ada's babysitting service! I am Red Cross certified (9/30/2017) and a sophomore at Hopkins High School. I love caring for kids of all ages. My starting rate is \$8 an hour. My services provided are: reading, arts and crafts, playing games, simple meal preparation and clean up. I can also be your part time Nanny or pet sitter. You can reach me through my father's phone at: 612-708-5620



Bugle also available at www.bmna.org

A reminder that in addition to being delivered to your doorstep, the Bryn Mawr Bugle is available online at bmna.org. Click on the Bugle logo on the home page to read the current edition or go under the 'Bugle' tab to see past editions and to learn more about advertising rates and submission deadlines.

COORDINATOR CORNER

Lynda Shaheen

Communications & Fundraising Coordinator

612.234.7819 • coordinator@bmna.org

Sign up for email list at BMNA.org